



powered by **Haier**



Stainless Steel

Catering Equipment

Everyday



Catering Equipment

High Quality Stainless Steel Products,
Locally Manufactured by Kwikot.

INDEX

Content	Page
Catering Sinks	
KS1 Series	04
KS2 Series	05
Pot Sinks	
KP1 Series	06
KP2 Series	07
Combination Catering and Pot Sinks	
KP1/KS1 Catering and Pot Sink	08
Tables and Wall Benches	
T Series Stainless Steel Tables	11
W Series Stainless Steel Wall Benches	12
Shelving	
Z Series Wall Band Shelving - Solid or Perforated	14
Fast Rack Modular Shelving - Solid or Louvered	15
Kwikboil Units	
Instant Boiling Water Dispensers	16

Catering Sinks

KS1 Series - Single Bowl Catering Sink

Technical info



Features

- Grade 304 (18/10) Stainless Steel 1,2mm gauge.
- Sound deadened with galvanized backing sheet.
- Hygienic and durable.
- Deep hospital bead to prevent spilling.

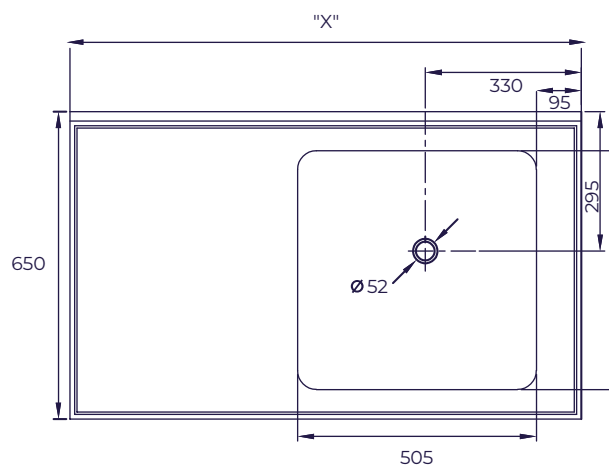
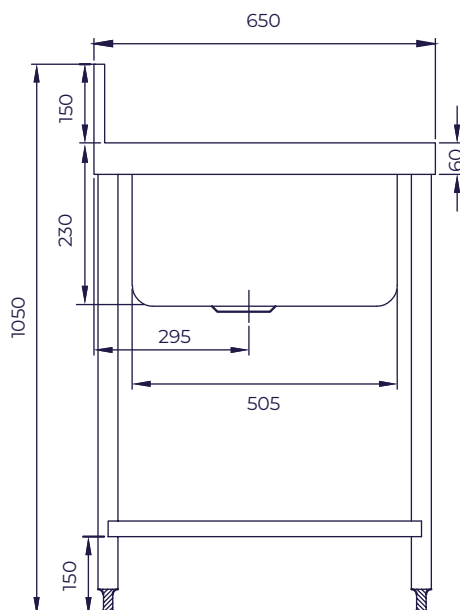
Optional Accessories

- Stainless steel solid under shelf.
- Stainless steel slatted under shelf.
- Non standard sizes on request.
- Splash-back to ends.

Product Code	Size	Bowl Position
SCAT-900	900 x 650mm	Centre/End
SCAT-1200	1200 x 650mm	Centre/End
SCAT-1500	1500 x 650mm	Centre/End

Specifications for KS1 Series Single Bowl Catering Sink

Kwikot KS1 Single End/Centre (please specify) Bowl Catering Sink manufactured in 1,2mm thick grade 304, (18/10) stainless steel, size (please specify) with a 150mm high integral splashback to the rear and 60mm x 12mm turndown with a beaded edge on the remaining sides. The underside sprayed with vermin proof bitumastic sound deadening material and supported with a 30 x 30 x 3mm framework and galvanized mild steel backing sheet fitted on to 41mm diameter round stainless steel detachable legs with adjustable foot pieces. Bowl Size: 505 x 505 x 230mm deep.



Pictures may vary from the actual product. Specifications may differ and will be subject to actual product (EandOE).

Catering Sinks

KS2 Series - Double Bowl Catering Sink

Technical info



Features

- Grade 304 (18/10) Stainless Steel 1,2mm gauge.
- Sound deadened with galvanized backing sheet.
- Hygienic and durable.
- Deep hospital bead to prevent spilling.

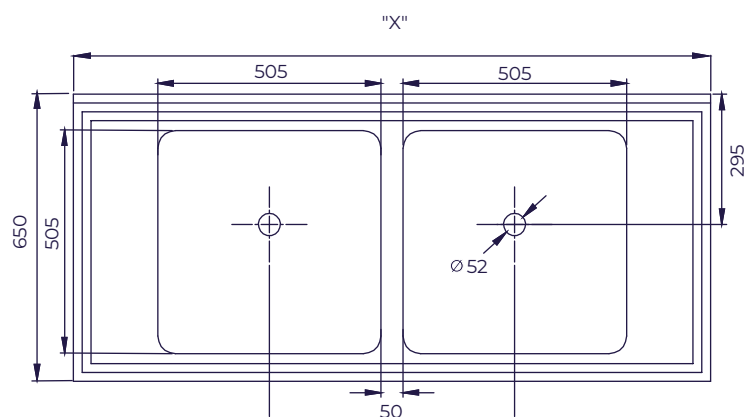
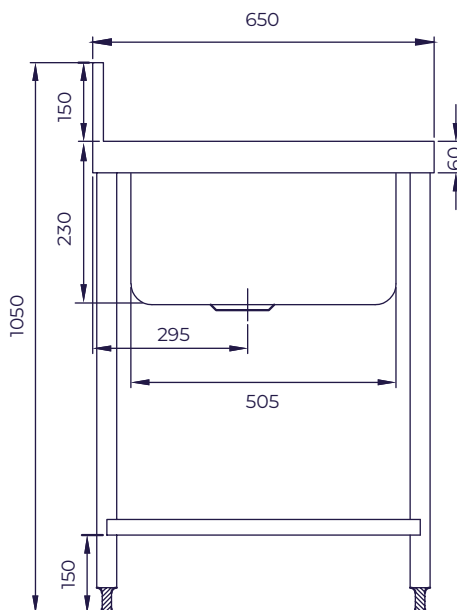
Optional Accessories

- Stainless steel solid under shelf.
- Stainless steel slatted under shelf.
- Non standard sizes on request.
- Splash-back to ends.

Product Code	Size	Bowl Position
SCAT-1500	1500 x 650mm	Centre/End
SCAT-1850	1850 x 650mm	Centre/End
SCAT-2400	2400 x 650mm	Centre/End

Specifications for KS2 Series Double Bowl Catering Sink

Kwikot KS2 Double Bowl Catering Sink manufactured in 1,2mm thick grade 304 (18/10) stainless steel, size (please specify) with a 150mm high integral splash back to the rear and 60mm x 12mm turndown with a beaded edge on the remaining sides. The underside sprayed with vermin proof bitumastic sound deadening material and supported with a 30 x 30 x 3mm framework and galvanized mild steel backing sheet fitted on to 40mm diameter round stainless steel detachable legs with adjustable foot pieces. Bowl Size: 505 x 505 x 230mm deep.



Pictures may vary from the actual product. Specifications may differ and will be subject to actual product (EandOE).

Pot Sinks

KP1 Series - Single Bowl Pot Sink

Technical info



Features

- Grade 304 (18/10) stainless steel 1,2mm gauge.
- Sound deadened with galvanized backing sheet.
- Hygienic and durable.
- Deep hospital bead to prevent spilling.

Optional Accessories

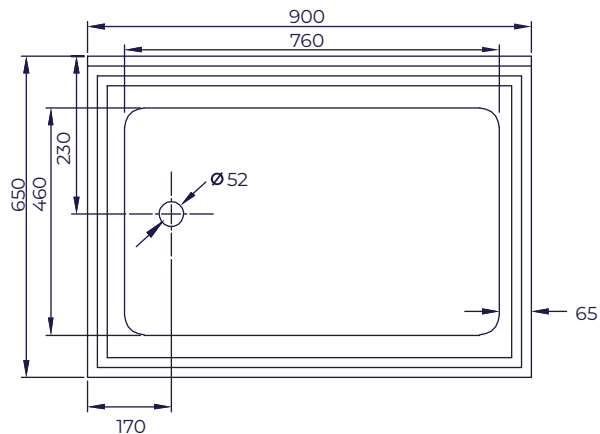
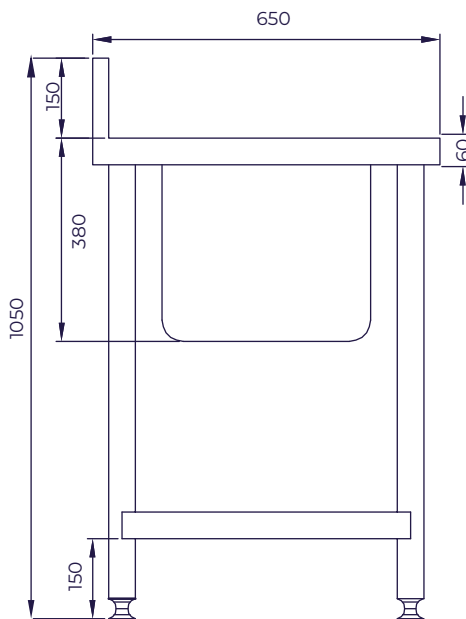
- Stainless steel solid under shelf.
- Stainless steel slatted under shelf.
- Non standard sizes on request.
- Splash-back to ends.

ProductCode	Length x width	Depth	Bowl Position
SPOT-900	900 x 650mm	380mm	Centre

Specifications for KPI Double Bowl Pot Sink

Kwikot KPI Single Bowl Pot Sink manufactured in 1,2mm thick grade 304 (18/10) stainless steel, size: 900 x 650mm with a 150mm high integral splashback to the rear and 60mm x 12mm turndown with a beaded edge on the remaining sides. The underside sprayed with vermin proof bitumastic sound deadening material and supported with a 30 x 30 x 3mm framework and galvanized mild steel backing sheet fitted on to 41mm diameter round stainless steel detachable legs with adjustable foot pieces.

Bowl Size: 760 x 460 x 380mm deep.



Pictures may vary from the actual product. Specifications may differ and will be subject to actual product (EandOE).

Pot Sinks

KP2 Series - Double Bowl Pot Sink

Technical info



Features

- Grade 304 (18/10) Stainless Steel 1,2mm gauge.
- Sound deadened with galvanized backing sheet.
- Hygienic and durable.
- Deep hospital bead to prevent spilling.

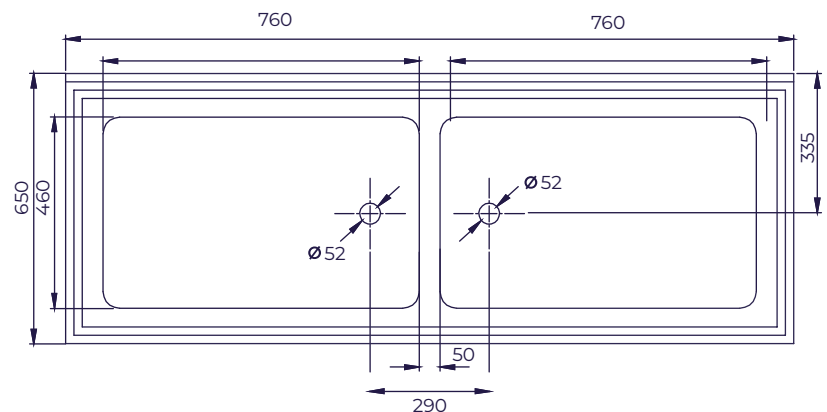
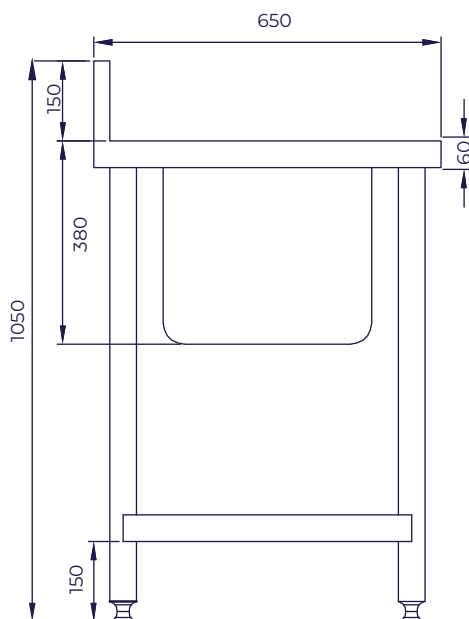
Optional Accessories

- Stainless steel solid under shelf.
- Stainless steel slatted under shelf.
- Non standard sizes on request.
- Splash-back to ends.

Product Code	Length x width	Depth	Bowl Position
SPOT-1850	1850 x 650mm	380mm	Centre
SPOT-2400	2400 x 650mm	380mm	Centre/End

Specifications for KP2 Double Bowl Pot Sink

Kwikot KP2 Double centre/end (please specify) bowl pot sink manufactured in 1,2mm thick grade 304 (18/10) stainless steel, size (please specify) with a 150mm high integral splashback to the rear and 60mm x 12mm turndown with a beaded edge on the remaining sides. The underside sprayed with vermin proof bitumastic sound deadening material and supported with a 30 x 30 x 3 mm framework and galvanized mild steel backing sheet fitted on to 41mm diameter round stainless steel detachable legs with adjustable foot pieces. Bowl Size: 760 x 460 x 380mm deep.



Pictures may vary from the actual product. Specifications may differ and will be subject to actual product (EandOE).

Combination and Catering Pot Sinks

KP1/KS1 Catering and Pot Sink

Technical info



Features

- Grade 304 (18/10) stainless steel 1,2mm gauge.
- Sound deadened with galvanized backing sheet.
- Hygienic and durable.
- Deep hospital bead to prevent spilling.

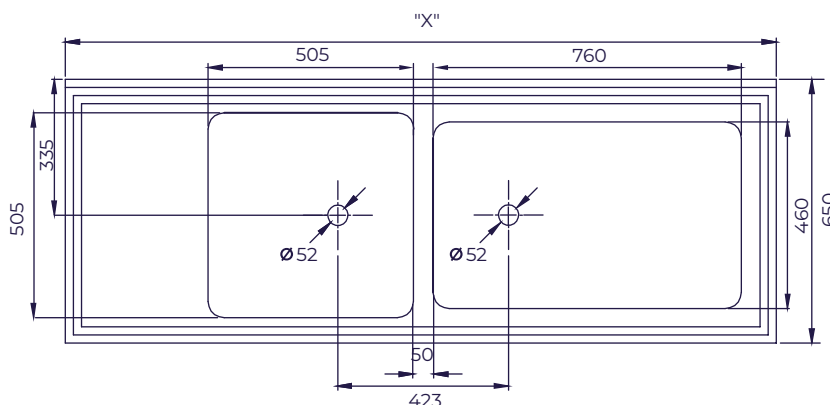
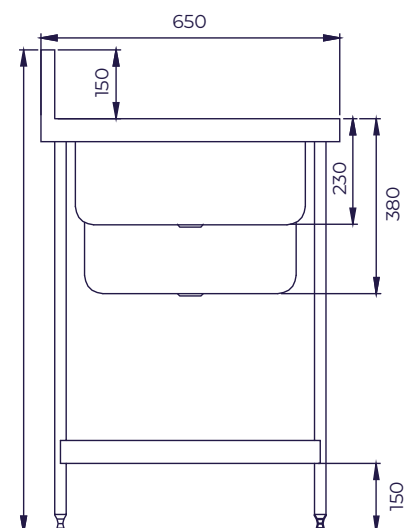
Optional Accessories

- Stainless steel solid under shelf
- Stainless steel slatted under shelf
- Non standard sizes on request
- Splash-back to ends

Product Code	Length x width	Bowl Depth	Pot Bowl Depth	Bowl Position
SPCAT-1850	1850 x 650mm	230mm	380mmmm	End
SPCAT-2400	2400 x 650mm	230mm	380mmmm	End

Specifications for KP1/KS1 Combination Catering and Pot Sink

Kwikot Model KP1/KS1 Combination Catering and Pot Sink manufactured in 1,2mm thick grade 304 (18/10) stainless steel, size (please specify), with a 150mm high integral splashback to the rear end and 60mmx 12mm turndown with a beaded edge on the remaining sides. The underside sprayed with vermin proof bitumastic sound deadening material and supported with a 30 x 30 x 3mm framework and galvanized mild steel backing sheet. Fitted onto 41mm diameter round stainless steel detachable legs with adjustable foot pieces. Pot bowl size 760 x 460 x 380mm deep and catering bowl size 505 x 505 x 230mm deep. legs with adjustable foot pieces. Pot bowl size 760 x 460 x 380mm deep and catering bowl size 505 x 505 x 230mm deep.



Pictures may vary from the actual product. Specifications may differ and will be subject to actual product (EandOE).





Tables and Wall Benches

T Series Tables

Technical info



Features

- Grade 304 (18/10) stainless steel 1,2mm gauge.
- Sound deadened with galvanized backing sheet.
- Hygienic and durable.

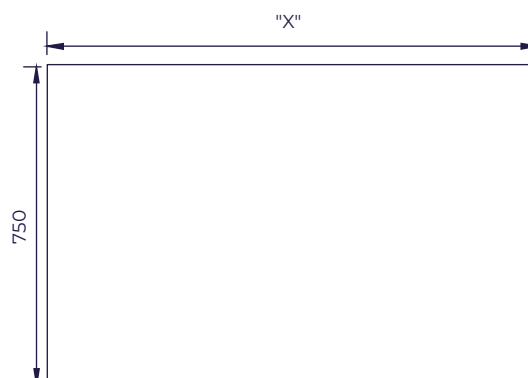
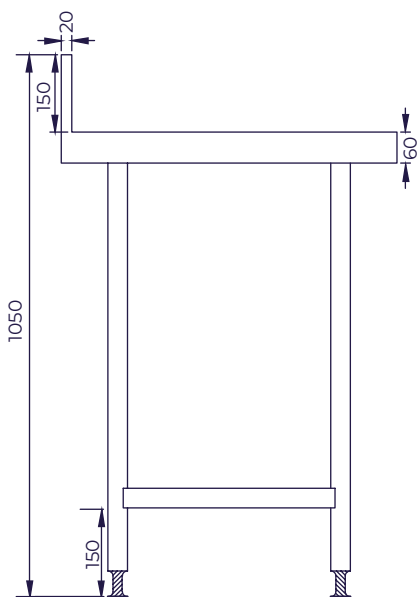
Optional Accessories

- Stainless steel solid under shelf.
- Stainless steel slatted under shelf.
- Non standard sizes on request.
- Splash-back to ends.

Product Code	Length x Width
STAB-1500	1500 x 750mm
STAB-1850	1850 x 750mm
STAB-2400	2400 x 750mm

Specifications for T Series Table

Kwikot T Series Table manufactured in 1,2mm thick grade 304 (18/10) stainless steel, size (please specify) with a 60 x 12mm turndown all round. The underside sprayed with vermin proof bitumastic sound deadening material and supported with a 30 x 30 x 3mm framework and galvanized backing sheet fitted on to 41mm diameter round stainless steel detachable legs with adjustable foot pieces.



Tables and Wall Benches

W Series Wall Benches

Technical info



Features

- Grade 304 (18/10) stainless steel 1,2mm gauge.
- Sound deadened with galvanized backing sheet.
- Hygienic and durable.
- Splashback to the back.

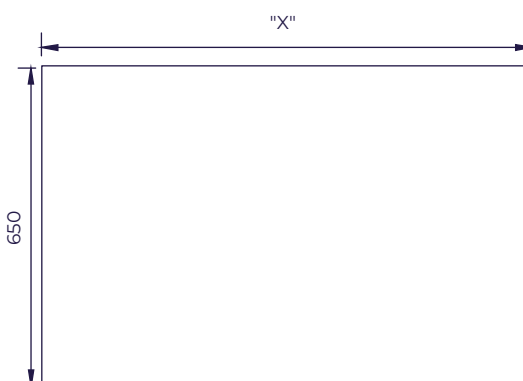
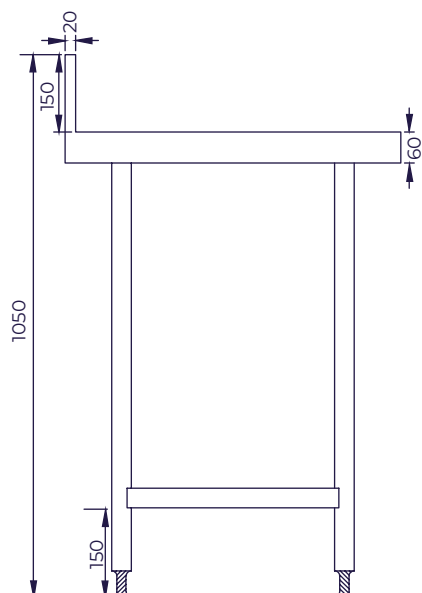
Optional Accessories

- Stainless steel solid under shelf.
- Stainless steel slatted under shelf.
- Non standard sizes on request.
- Splashbacks to one or both ends.

Product Code	Length x Width
SWB-1500	1500 x 650mm
SWB-1850	1850 x 650mm
SWB-2400	2400 x 650mm

Specifications for W Series Wall Bench

Kwikot W Series Wall Bench manufactured in 1,2mm thick grade 304 (18/10) stainless steel, size (please specify) with a 150mm splashback to the back and 60 x 12mm turndown on remaining sides. The underside sprayed with vermin proof bitumastic sound deadening material and supported with a 30 x 30 x 3mm framework and galvanized backing sheet fitted on to 41mm diameter round stainless steel detachable legs with adjustable foot pieces.





Shelving

Z Series Wall Band Shelving - Solid or Perforated Shelves

Technical info



Solid



Perforated

Features

- Grade 304 (18/10) Stainless Steel.
- Durable and hygienic.
- Easy to assemble, expand and adjust

Product Code	Length x width	Finish
SSZSS-900-300	900 x 300mm	Solid
SSZSS-900-400	900 x 400mm	Solid
SSZSS-1200-300	1200 x 300mm	Solid
SSZSS-1200-400	1200 x 400mm	Solid
SSZPS-900-300	900 x 300mm	Perforated
SSZPS-900-400	900 x 400mm	Perforated
SSZPS-1200-300	1200 x 300mm	Perforated
SSZPS-1200-400	1200 x 400mm	Perforated

Product Code	Length	Slotted
SSWBSZ-1000	1000mm	Single
SSWBSZ-1800	1800mm	Single
SSWBDZ-1000	1000mm	Double
SSWBDZ-1800	1800mm	Double

Specification for Z Series Wall Band Shelving (Solid or Perforated Shelves)

Kwikot Z Series Adjustable Shelving, size (please specify), manufactured from 1,2mm thick grade 304, stainless steel. One piece solid or perforated (please specify) shelf with integrated brackets and a 25mm apron to front and sides, with 30mm turn up at back and safety edge on corners.

Kwikot Z Series Wall Bands available in 1000mm/1500mm/1800mm long sizes (please specify), single/double slotted (please specify). Manufactured from 1,2mm thick grade 304 (18/10) stainless steel.

(Custom sizes of Shelves and Wall Bands are also available on request).

Pictures may vary from the actual product. Specifications may differ and will be subject to actual product (EandOE).

Shelving

Fast Rack Modular Shelving - Solid or Louvered Shelves

Technical info



Features

- Grade 304 (18/10) Stainless Steel.
- Durable and hygienic.
- Easy to assemble, expand and adjust

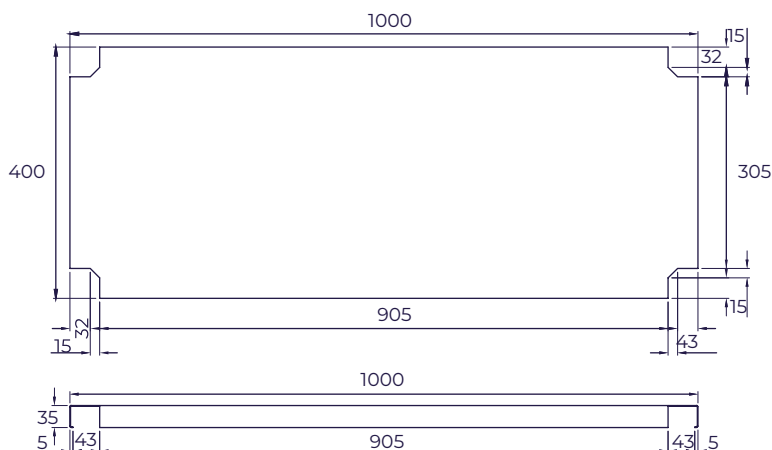
Product Code	Length x width	Finish
SSMSS-900-400	900 x 400mm	Solid
SSMSS-1200-400	1200 x 400mm	Solid
SSMPS-900-400	900 x 400mm	Louvered
SSMPS-1200-400	1200 x 400mm	Louvered

Specification for Fast Rack Modular Shelving (Solid or Louvered Shelves)

Kwikot Fast rack Modular Shelving Solid or Perforated Shelves (please specify), size (please specify), manufactured from 1,2mm thick grade 304, (18/10) stainless steel with die cast aluminum corner brackets for fixing to 25mm diameter, vertical posts.

Vertical posts manufactured from 1,2mm thick 25mm diameter stainless steel and fitted with end caps at one end and adjustable foot pieces and full set of 4 posts.

(Custom sizes of Shelves and Posts are also available on request).



Kwikboil Instant Boiling Water Dispensers

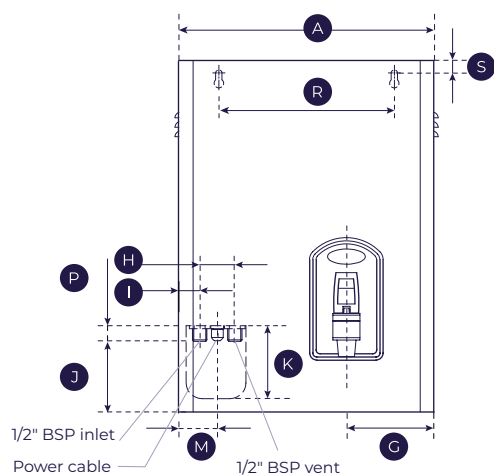
Boiling Water On Tap, 24/7



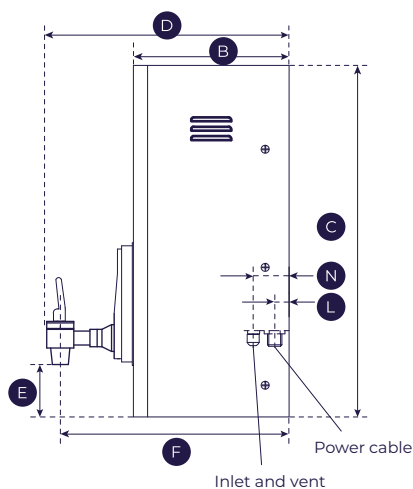
Kwikboil 2.5 / 5 / 7.5 / 10 / 15
White Epoxy or Stainless Steel

Dimensions

Front view



Side view



Features

- Stainless steel or white epoxy outer casing
- On tap boiling water
- Wall mounted
- Fully automatic
- Advanced electronic controls
- Safe, hygienic and energy efficient
- Steam free and convenient
- Diagnostic PC board for fault finding

Size	A	B	C	D	E	F	G	H	I	J	K	L	M	N	P	R	S	T
Kwikboil 2,5 L	275	165	365	263	82	243	110	44	28	90	93	18	49	45	20	220	16	N/A
Kwikboil 5L	320	195	448	293	82	273	110	44	28	90	93	18	49	45	20	220	16	N/A
Kwikboil 7,5 L	320	195	448	293	82	273	110	44	28	90	93	18	49	45	20	220	16	N/A
Kwikboil 10 L	348	225	460	323	82	303	137	44	28	90	93	18	49	45	20	220	16	N/A
Kwikboil 15 L	370	230	513	328	82	306	140	44	28	90	93	18	49	45	20	220	16	N/A

NB. Operates at 230 Volts AC, 50 Hz single phase electricity. Flexible 1,5m electrical cord with a 3 pin plug fitted to all units.

Pictures may vary from the actual product. Specifications may differ and will be subject to actual product (EandOE).

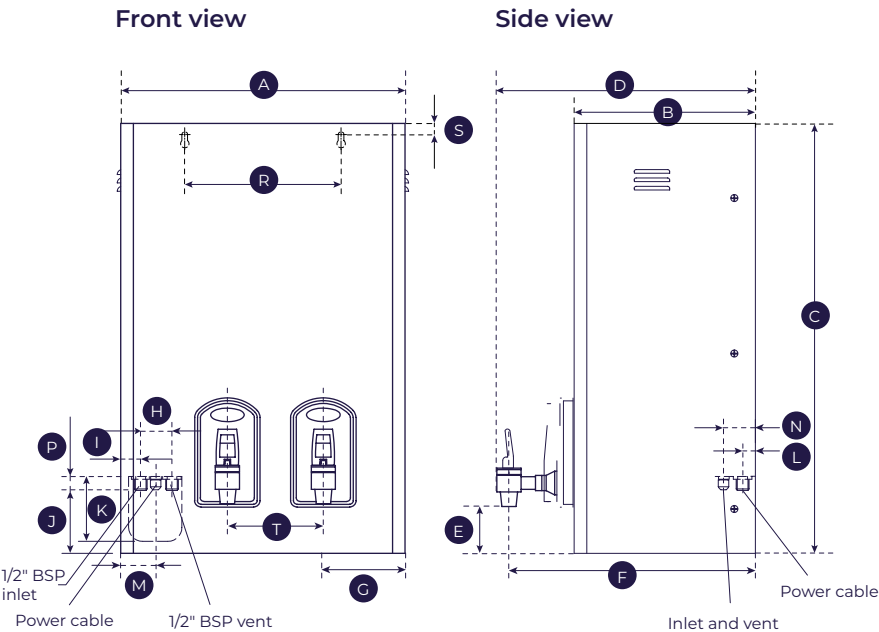
Kwikboil Instant Boiling Water Dispensers

Boiling Water On Tap, 24/7



Kwikboil 25
White Epoxy or Stainless Steel

Dimensions



Product accessories



KB-SSTRAY
Stainless Steel Drip Tray

Specifications	
Outer Dimensions (mm)	335 x 255
Inner Dimensions (mm)	300 x 235
Depth (mm)	50

Size	A	B	C	D	E	F	G	H	I	J	K	L	M	N	P	R	S	T
Kwikboil 2,5 L	400	255	613	353	82	333	115	44	28	90	93	18	49	45	20	220	16	135

Specifications

Kwikot KwikBoil Instant Boiling Water available in a white Epoxy finish or Stainless steel. Fitted with an Incalloy hard water heating element, with safety cut out. The inner tank (boiling water chamber) is manufactured from copper and the unit has a self diagnostic PC board with easy fault finding indicative LED lights. The unit operates at 230 volts AC, 50Hz, single phase electricity, operates under 15 amps and is fitted with a 1,5m electrical cord with a 3 pin plug fitted onto it. Ideal for coffee and tea but also not limited to sterilization of baby bottles etc.

Kwikboil units are available in the following capacities: 2,5L; 5L; 7,5L; 10L; 15L and 25L.

Pictures may vary from the actual product. Specifications may differ and will be subject to actual product (EandOE).



Register Your Kwikot Product Today!

Why Register?

Ensure peace of mind by registering your Kwikot product and enjoy these exclusive benefits:

- **Full Warranty Activation** – Get complete coverage for your product.
- **Stay Informed** – Receive important safety and product updates.
- **Proof of Ownership** – Simplify future service or support requests.

Who Can Register?

- Homeowners who have purchased and installed a Kwikot product.
- Licensed plumbers or installers registering on behalf of clients.

What You'll Need to Register:

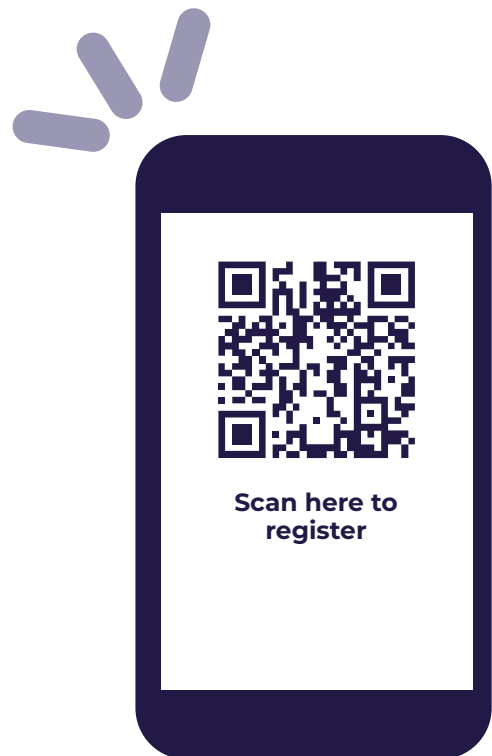
- Installation date.
- Product serial number. (found on your water heater)
- Proof of purchase or installation. (optional upload)
- Contact details. (name, email, phone number)

To Validate the Warranty

(Please Register Online)

Kwikot has taken a significant step towards enhancing their customer service by introducing new Water Care product registrations. Through this new process, customers and installers can register their water heaters and water care products by scanning the product registration QR code (which can be found on the water heater) via a smart phone or manually entering the information on **www.kwikot.com**

This registration process enables service agents to access product information promptly, allowing for more efficient handling of warranty claims and a convenient experience for customers. This initiative reflects our unwavering commitment to delivering exceptional service to our valued customers.





KWIKOT

powered by **Haier**

Need Assistance?

Sales and Payment Queries:
za_salesorders@kwikot.com | **011 897 4600**

Admin, Marketing and Product Queries:
kwikot.marketinginfo@kwikot.com

Technical Queries:
technical.info@kwikot.com

Gauteng
3 Aberdeen Road
Industrial Sites
Benoni

KwaZulu-Natal
814 Peter Close
Springfield Park
Durban

Western Cape
15 Purdey Road
Sheffield Business Park
Phillippi, Cape Town

Eastern Cape
39-41 Leadwood
Crescent
Fairview
Port Elizabeth