



powered by **Haier**

Commercial Stainless Steel

Sanitaryware

Everyday



INDEX

Content

Page

Basins

Single Wash Hand Basin

3

Oval Wash Hand Basins

4

Range of Wash Hand Basins

6

WC Pans

Floor Mounted WC Pan

7

Wall Hung WC Pan

8

Urinals

Wall Mounted Bowl Urinal

9

Curved Back Urinals

10

Trough Urinals

11

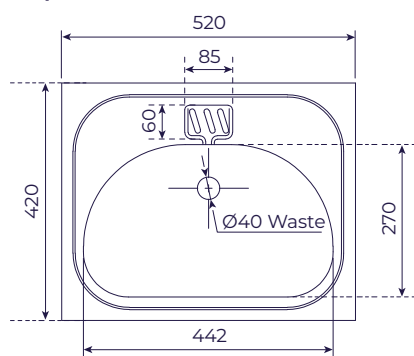


SHB-001-TDAR

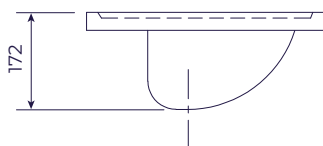


Dimensions

Top view



Side view



Features

- Grade 304 (18/10) stainless steel
- Durable and hygienic
- One piece pressed
- With or without tiling key

Specifications

Kwikot model SHB-001 Single Wash Hand Basin manufactured in grade 304 (18/10) stainless steel with or without 25mm splash back and tiling key and 40mm waste outlet. Size: 520 x 420 x 170mm deep.

Optional mounting methods

- Epoxy Coated "Titan Brackets" (SS-BRACK-TI)
- Galvanized Brackets (SHB-001-GA)
- Stainless steel "Dura Brackets" (SHB-001-SS)
- 25mm Square stainless steel gallow brackets (SHB-001-GAL)
- 25mm Square stainless steel gallow brackets and front legs (SHB-001-GBFL)

SHB-001-TDAR / TK

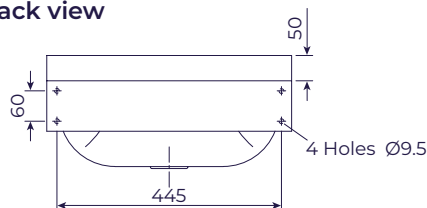
Length (mm)	420
Width (mm)	520
Depth (mm)	172

SHB-SURR

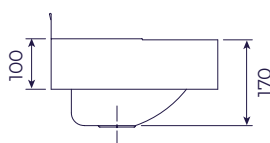


Dimensions

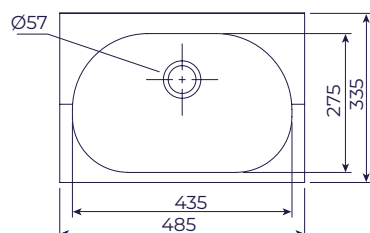
Back view



Side view



Top view



Features

- Grade 304 (18/10) stainless steel
- Durable and hygienic
- Pressed bowl
- 100mm Radius apron

Specifications

Kwikot model SHB-SURR Wall Mounted Oval Basin. Size: 485 x 335 x 170mm deep manufactured from 1,2mm thick grade 304 (18/10) stainless steel, 40mm splashback and 100mm surround radius apron with provision for mounting to wall, with 40mm waste outlet.

Optional accessories SHB-Basins

Stainless steel vandal proof half pedestal (SHB-HPED) used to conceal P-trap and plumbing underneath the bowl for additional security and vandal proof measures. Bolted to wall underneath the bowl. Comfortable fit conforming to the contours of the underside of the bowl.



SHB-SURR

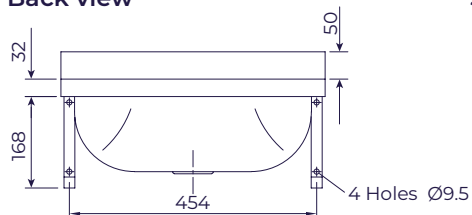
Length (mm)	485
Width (mm)	335
Depth (mm)	170

SHB-BRACK

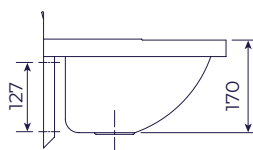


Dimensions

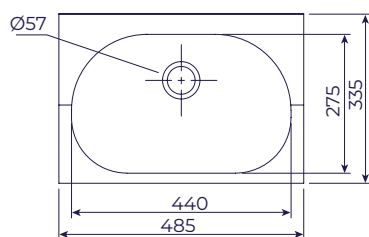
Back view



Side view



Top view



Features

- Grade 304 (18/10) stainless steel
- Durable and hygienic
- Pressed bowl
- Stainless steel "L" shaped brackets

Specifications

Kwikot model SHB-BRACK Wall Mounted Oval Wash Hand Basin manufactured in 1,2mm thick grade 304 (18/10) stainless steel. Size 485 x 335 x 170mm deep, 40mm splashback and radius apron mounted on 20mm square stainless steel "L" Shaped Brackets complete with 40mm waste outlet.

SHB-001

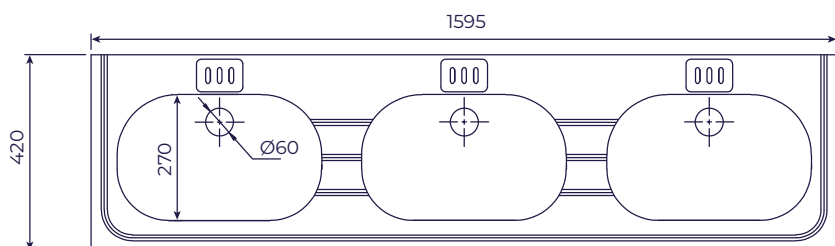
Length (mm)	485
Width (mm)	335
Depth (mm)	170

SRHB-003

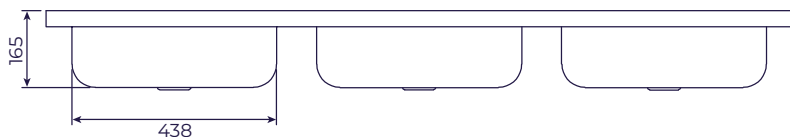


Dimensions

Top view



Front view



Features

- Grade 304 (18/10) stainless steel
- Durable and hygienic
- Wall mounted

Specifications

Kwikot SRHB-002, SRHB-003 Range of Wash Hand Basins manufactured in 1,2mm thick grade 304 (18/10) stainless steel with or without 25mm splash back and tiling key and 40mm waste outlets. Unit to be fixed on to pair of stainless steel gallow brackets / pair of stainless steel gallow brackets and front legs with adjustable foot pieces. (Please specify).

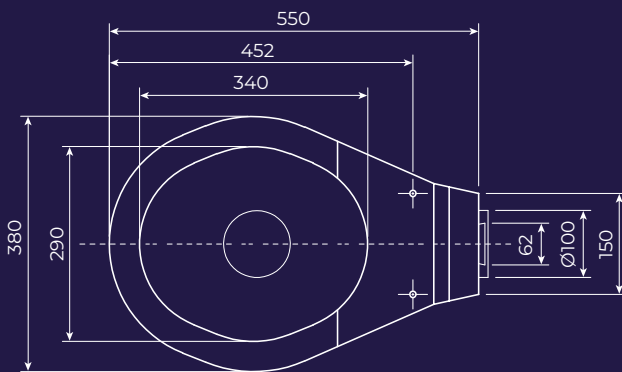
Product Code	SRHB-002	SRHB-003
Nr of Bowls	2	3
Length (mm)	1070	1595
Width (mm)	420	420
Bowl Depth (mm)	165	165

*Larger ranges available on request, ie SRHB-004, SRHB-005, etc.

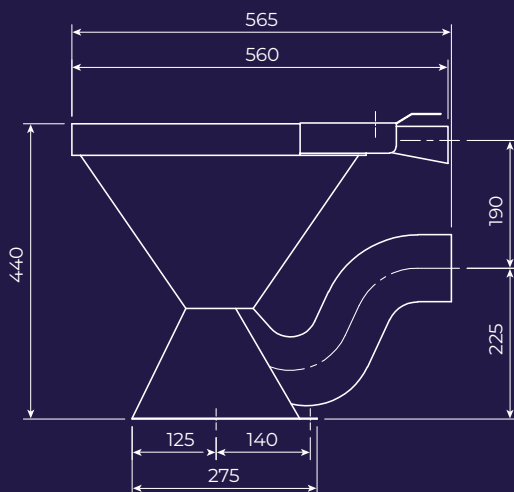
SWC-PAN-FM



Top view



Side view



Features

- Grade 304 (18/10) stainless steel
- Durable and hygienic
- Inlet to suit standard flush pipe connections
- Outlet to suit standard PVC or cast iron sewerage systems
- Complies with paper removal test: SABS 497:2:006
- Complies with flushing test: SABS 1733:2007

Specifications

Kwikot model SWC-PAN-FM Floor Mounted WC Pan manufactured 1,2mm thick grade 304 (18/10) stainless steel with concealed flushing rim and integral stainless steel 110mm "P" trap and back entry flush pipe inlet. Provision to be made for standard seat hole. Fixed to floor with anchor bolts. (Bolts supplied elsewhere).

SWC-PAN-FM

Height (mm)	440
Width (mm)	380
Length (mm)	550

Optional flushing

Kwikot Model SHL-CIS-LOW, 11 Litre Low Level Cistern manufactured in Grade 304 stainless steel. Size 470mm (L) x 300mm (H) x 160mm (W). Complete flush and ball valve and PVC flush pipe. Optional stainless steel flush pipe on request.

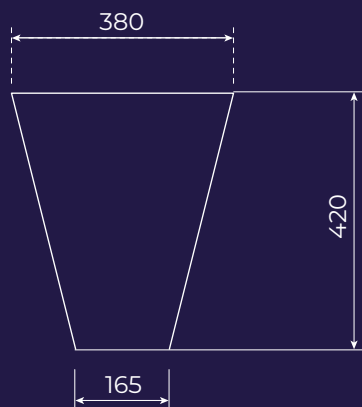


SWC-PAN-WM

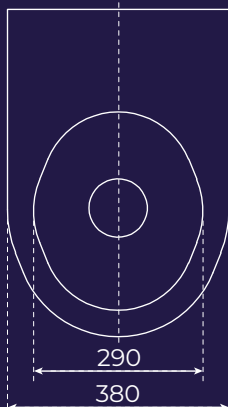
Front view



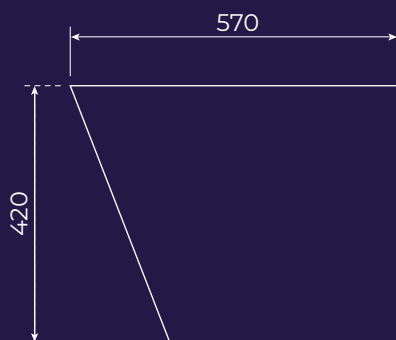
Front view



Top view



Side view



Features

Grade 304 (18/10) stainless steel

- Durable and hygienic
- Outer body totally enclosed
- Seat provision
- Inlet and outlet to suit standard PVC or cast iron sewerage systems
- Complies with paper removal test: SABS 497:2:006
- Complies with flushing test: SABS 1733:2007

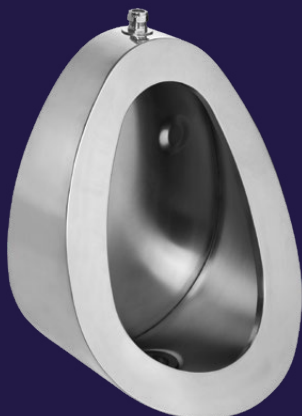
Specifications

Kwikot model SWC-PAN-WM Wall Mounted WC Pan manufactured 1,2mm thick grade 304 (18/10) stainless steel with concealed flushing rim and integral stainless steel 110mm "P" trap and back entry flush pipe inlet. Complete with wall mounting bracket to fixed to wall with anchor bolts. (Bolts supplied elsewhere)

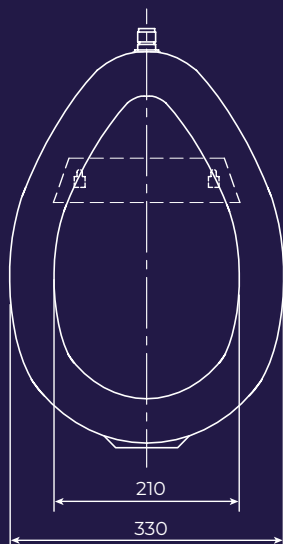
SWC-PAN-WM

Height (mm)	420
Width (mm)	380
Length (mm)	570

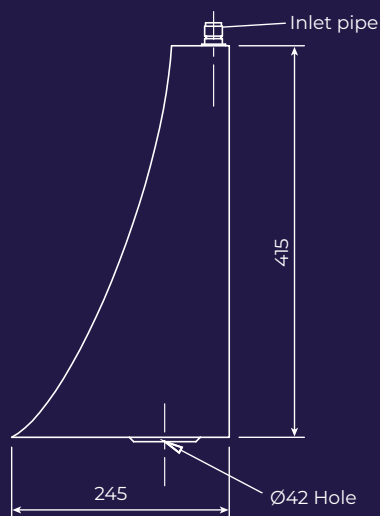
SUR-BOWL-TE



Front view



Side view



Features

- Grade 304 (18/10) stainless steel
- Durable and hygienic
- Wall mounted
- Top Entry or Back Entry (Please specify)

Specifications

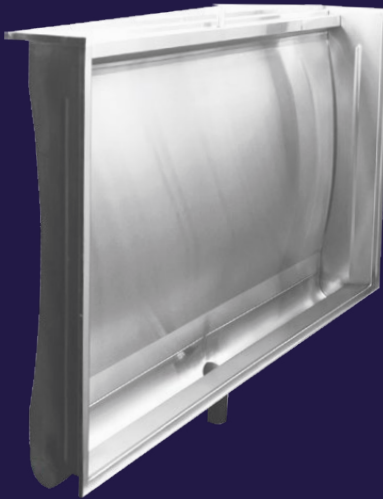
Kwikot model SUR-BOWL-TE Wall Hung Bowl Urinal manufactured in 1,2mm thick grade 304 (18/10) stainless steel complete with spreader, 40mm diameter waste outlet and urinal waste fitting. Available with Top Entry (SUR-BOWL-TE) or Back Entry inlet (SUR-BOWL-BE). (Please Specify).

SUR-BOWL-TE

Height (mm)	415
Width (mm)	330

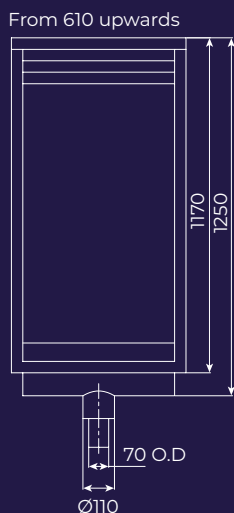
KCB 101

KCB 102

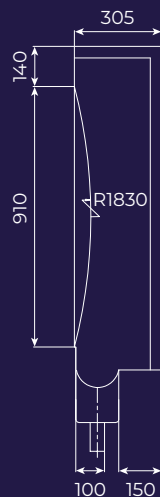


KCB 101/102

Front view



Side view



KCB 101/102 Standard length sizes:
915 / 1065 / 1220 / 1370 / 1525 / 1675 / 1830
* Custom Sizes available on request.

KCB 101

Features

- Grade 304 (18/10) stainless steel 1,2mm
- Durable and hygienic
- For use with flush valve or high level cistern
- Concealed sparge pipe
- Fully sound deadened

Specifications

Kwikot model KCB101 Manual Flush Curved Back Urinal manufactured in 0.9mm thick grade 304 stainless steel, Length..... (please specify). Complete with concealed sparge pipe and is fully sound deadened. Urinal to be fitted with one centre/left hand/right hand outlet (please specify). Flush valve to be supplied elsewhere.

Recommended Inlets

Length (mm)	No of Inlets	No of Flush Valves/Cisterns
600 to 2135	1	1
2285 to 3350	2	2
3365 to 4570	3	3
4875 to 6095	4	4

KCB 102

Features

- Grade 304 (18/10) stainless steel
- Built in automatic tipping tank
- 12mm adjustable drip cock for water supply
- Fully sound deadened

Specifications

Kwikot model KCB 102 Auto Flush Curved Back Urinal manufactured in 0,9mm thick grade 304 stainless steel, length..... (please specify). Complete with built in automatic flushing tank and 12mm adjustable drip cock for water supply and is fully sound deadened. Urinal to be fitted with one centre/left hand/right hand outlet (please specify).

KTU



Features

- Grade 304 (18/10) stainless steel
- Concealed Sparge pipe (KTU101) or built in automatic flush tipping tank (KTU 102)
- KTU 101 model supplied with 28mm CP Conex coupling for connection to flush pipe or Junior flush valve.
- Left or right hand outlets (provision for 40mm waste outlet)
- Sloped drip ledge
- Available with free standing end(s) or tiling key(s) for applications between walls

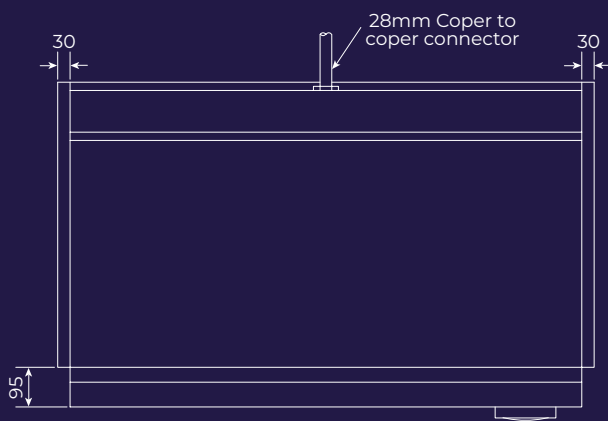
Specifications

Kwikot model KTU101 Manual Flush Trough Urinal, manufactured in 0,9mm thick grade 304 (18/10) stainless steel, length.....mm (please specify). Urinal to be manufactured to fit between two walls/to one wall and one free end (please specify). Urinal to be fitted with one right hand or left hand outlet (Please specify). Urinal to be supplied with Concealed Sparge Pipe and 28mm CP Conex coupling for connection to flush pipe or Junior flush valve.

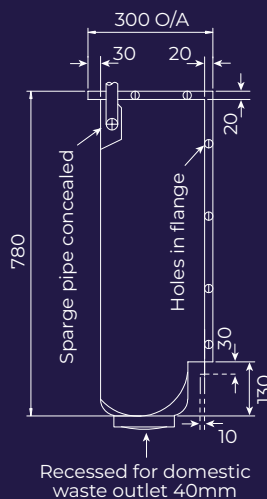
Kwikot model KTU102 Auto Flush Trough Urinal manufactured in 0,9mm thick grade 304 (18/10) stainless steel, length.....mm (please specify). Urinal to be manufactured to fit between two walls/to one wall and one free end/against wall with one end free (please specify). Complete with built in automatic flush tipping tank and 12mm adjustable drip cock for water supply and is fully sound deadened. Urinal to be fitted with one right hand or left hand outlet (Please specify).

Front view

Side view



KTU 101 Trough urinal with tiling key



KTU Standard length sizes:

915 / 1065 / 1220 / 1370 / 1525 / 1675 / 1830

Left Hand or Right Hand Outlet (Please specify)

* Custom Sizes available on request.



KWIKOT

powered by **Haier**

Need Assistance?

Sales and Payment Queries:
za_salesorders@kwikot.com | **011 897 4600**

Admin, Marketing and Product Queries:
kwikot.marketinginfo@kwikot.com

Technical Queries:
technical.info@kwikot.com

Gauteng
3 Aberdeen Road
Industrial Sites
Benoni

KwaZulu-Natal
814 Peter Close
Springfield Park
Durban

Western Cape
15 Purdey Road
Sheffield Business Park
Phillippi, Cape Town

Eastern Cape
39-41 Leadwood
Crescent
Fairview
Port Elizabeth



**25 year
warranty**

*T&C's apply

www.kwikot.com