



KwikBoil
INSTANT BOILING WATER DISPENSERS

Level Probe Cleaning Instructions

Step 1

Disconnect the power supply to KwikBoil unit.



Step 2

Remove the screws on the side of the KwikBoil unit.



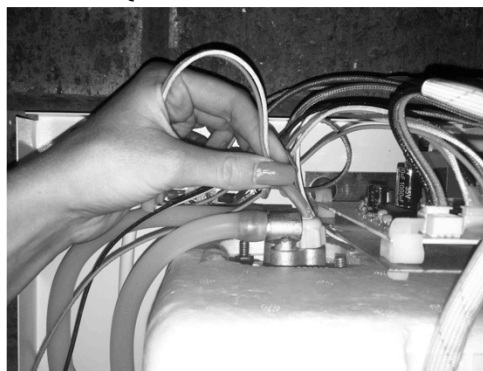
Step 3

Remove the front cover from the KwikBoil unit.



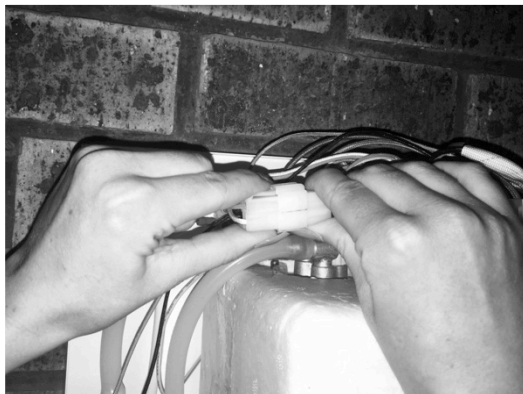
Step 4

Locate the Level Probe on the top of the tank. (It has red and white wires)



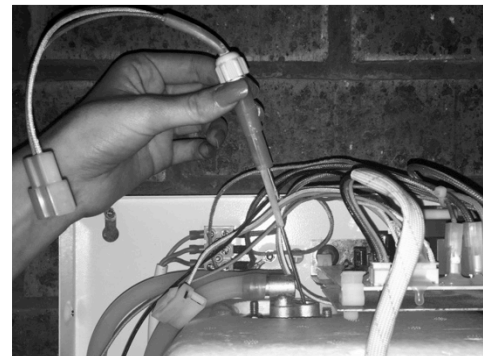
Step 5

Trace the wires to the connecting plugs. Press down the clip and separate the plugs.



Step 6

Pull the Level Probe upwards out of the tank. (The Level Probe is not fixed or screwed in, it simply pulls out.)



Step 7

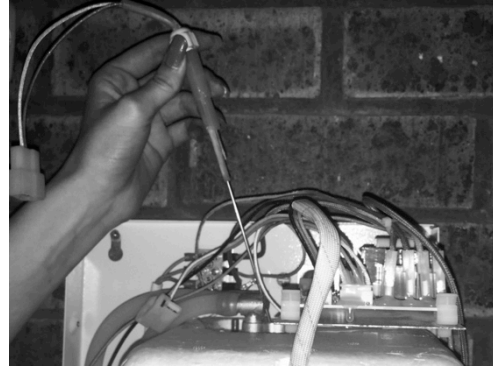
Assess the condition of the Level Probe. If it is scaled up, remove the scale by either scraping it off or by using a Scotchbrite sponge. All the scale must be removed completely until all the metal of the Level Probe is exposed.

(PLEASE NOTE: Be cautious not to damage the silicon housing at the top of the Level Probe)



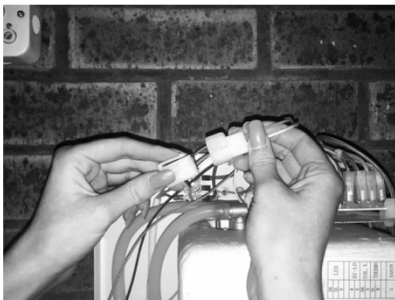
Step 8

Place the Level Probe back into the top of the KwikBoil tank.



Step 9

Reconnect the Level Probe wiring by inserting the male and female plugs into one another.



Step 10

Replace the KwikBoil cover onto the unit.



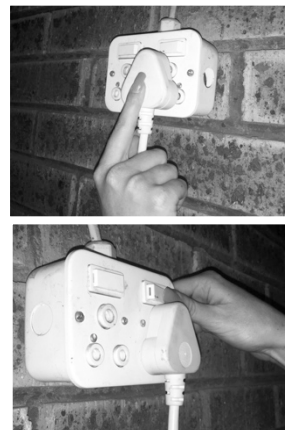
Step 11

Fasten the cover to the body of the KwikBoil unit by replacing the screws back into the holes on either side of the unit.



Step 12

Reconnect and switch on the power supply to the KwikBoil unit.



PLEASE NOTE: Allow the KwikBoil unit to fill completely for ± 10 minutes before the first initial use.