



APOLLO RANGE OF STANDARD FREE STANDING SERVER CABINETS

The Professional's Choice
The Industry Standard 19" Server Cabinets
in the Apollo range offer quick installation
and are extremely reliable



Made in South Africa
Manufactured to International Standards
Exported Globally



APOLLO RANGE

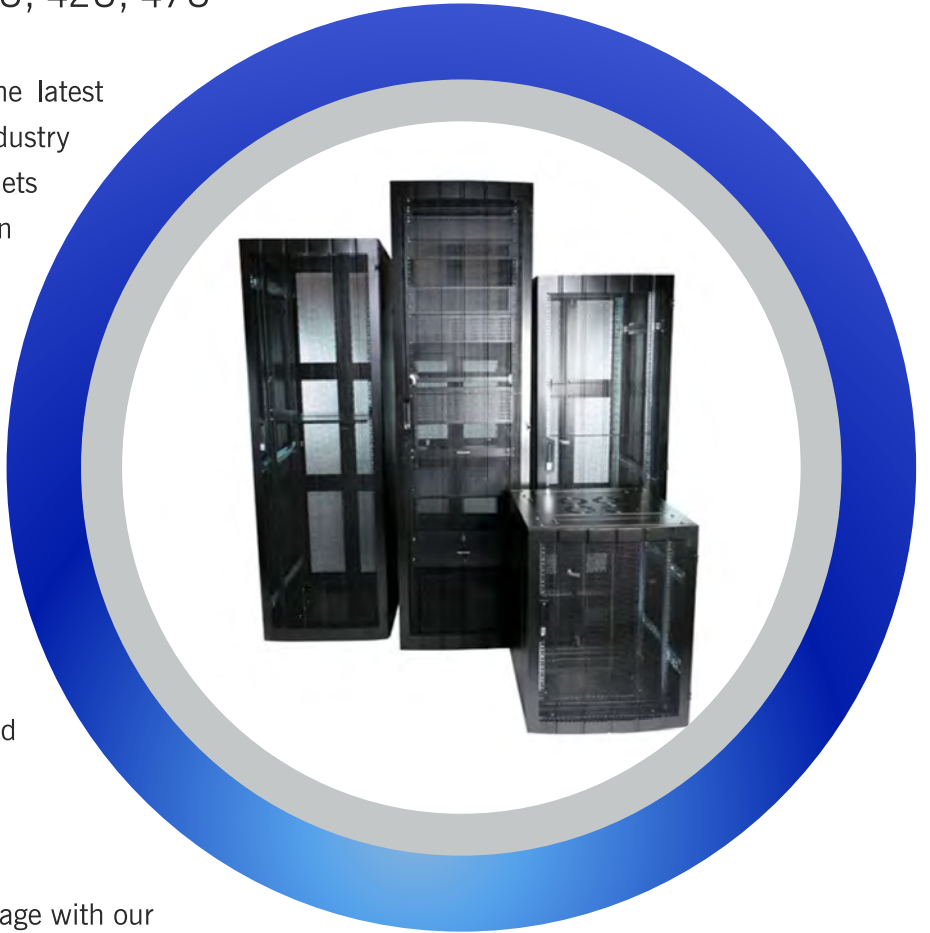
NETWORK SERVER CABINETS 600/800/1000 DEPTHS

12U, 16U, 20U, 25U, 34U, 38U, 42U, 47U

Our modern factory is equipped with the latest machinery which we use to produce industry leading server cabinets. Our server cabinets are used by a wide array of companies in telecommunication, IT, and a host of other industries for various applications.

The Apollo Range is a top seller that is no exception. The server cabinets are manufactured from the finest materials to the highest global standards.

The Apollo Range of cabinets have proven over and over that they stand up to years of service and still retain their good looks and build integrity.



Server-Racks

Get the most out of your server room storage with our server rack and accessories. Our range offers a stable and durable platform for your valuable network and AV equipment We can help you:

- Neatly store and secure equipment
- Ensure easy access and monitoring
- Manage cooling and airflow issues
- Manage cable issues to reduce clutter
- Fit your equipment properly in its space with different size and mounting options

Official Distributor of Cattex Products
Eurobyte Technology
sales@eurobyte.co.za
www.eurobyte.co.za

Johannesburg
Unit 7 Cambridge Commercial Park West
22 Witkoppen Road, Paulshof, Gauteng
(011) 234-0142

Cape Town
Unit J13, Centurion Business Park,
Montague Gardens, Western Cape
(021) 551-2804

- 1 **Loading Capacity** 450 kg's
- 2 **Materials** High-quality cold rolled steel
- 3 **Thickness** Mounting profiles: 1.6mm | Mounting rails: 1.6mm | Other panels: 1.2mm
- 4 **Cooling Fan** Two/Four optional 120mm AC cooling fans
- 5 **Side panels** Removable
- 6 **Doors** Hexagonal mesh front door (option of glass) and Hexagonal mesh double rear doors
- 7 **Colors** Black-RAL9004, White-RAL7035, Grey-RAL7032
- 8 **Surface Finish** Degreasing, Pickling, Phosphating, 7 Tank Dip System Powder Coating
- 9 Cable entry glands provided top & bottom
- 10 Adjustable feet & or castors

Our Flat Packs packaging and transportation design is a unique feature that has become one of our highest selling products for its ease of delivery and storage





APOLLO RANGE

600mm Wide (19") Cabinets

	Code	U	Height	Depth	Door	Kg's
12u models	CP6612.GLA.B	12	714	600	Glass	46
	CP6612.PER.B	12	714	600	Perf	39
	CP6812.GLA.B	12	714	800	Glass	52
	CP6812.PER.B	12	714	800	Perf	45
	CP6012.GLA.B	12	714	1000	Glass	59
	CP6012.PER.B	12	714	1000	Perf	51

	Code	U	Height	Depth	Door	Kg's
16u models	CP6616.GLA.B	16	890	600	Glass	54
	CP6616.PER.B	16	890	600	Perf	45
	CP6816.GLA.B	16	890	800	Glass	61
	CP6816.PER.B	16	890	800	Perf	52
	CP6016.GLA.B	16	890	1000	Glass	68
	CP6016.PER.B	16	890	1000	Perf	59

	Code	U	Height	Depth	Door	Kg's
20u models	CP6620.GLA.B	20	1070	600	Glass	62
	CP6620.PER.B	20	1070	600	Perf	51
	CP6820.GLA.B	20	1070	800	Glass	69
	CP6820.PER.B	20	1070	800	Perf	58
	CP6020.GLA.B	20	1070	1000	Glass	77
	CP6020.PER.B	20	1070	1000	Perf	66

	Code	U	Height	Depth	Door	Kg's
25u models	CP6625.GLA.B	25	1290	600	Glass	72
	CP6625.PER.B	25	1290	600	Perf	59
	CP6825.GLA.B	25	1290	800	Glass	80
	CP6825.PER.B	25	1290	800	Perf	67
	CP6025.GLA.B	25	1290	1000	Glass	89
	CP6025.PER.B	25	1290	1000	Perf	76

	Code	U	Height	Depth	Door	Kg's
34u models	CP6634.GLA.B	34	1690	600	Glass	90
	CP6634.PER.B	34	1690	600	Perf	72
	CP6834.GLA.B	34	1690	800	Glass	99
	CP6834.PER.B	34	1690	800	Perf	82
	CP6034.GLA.B	34	1690	1000	Glass	110
	CP6034.PER.B	34	1690	1000	Perf	93

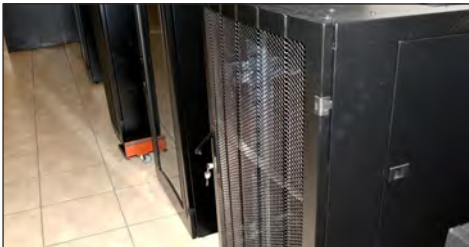
	Code	U	Height	Depth	Door	Kg's
38u models	CP6638.GLA.B	38	1870	600	Glass	98
	CP6638.PER.B	38	1870	600	Perf	78
	CP6838.GLA.B	38	1870	800	Glass	108
	CP6838.PER.B	38	1870	800	Perf	88
	CP6038.GLA.B	38	1870	1000	Glass	120
	CP6038.PER.B	38	1870	1000	Perf	100

	Code	U	Height	Depth	Door	Kg's
42u models	CP6642.GLA.B	42	2040	600	Glass	105
	CP6642.PER.B	42	2040	600	Perf	84
	CP6842.GLA.B	42	2040	800	Glass	116
	CP6842.PER.B	42	2040	800	Perf	95
	CP6042.GLA.B	42	2040	1000	Glass	129
	CP6042.PER.B	42	2040	1000	Perf	107

	Code	U	Height	Depth	Door	Kg's
47u models	CP6647.GLA.B	47	2260	600	Glass	114
	CP6647.PER.B	47	2260	600	Perf	90
	CP6847.GLA.B	47	2260	800	Glass	127
	CP6847.PER.B	47	2260	800	Perf	103
	CP6047.GLA.B	47	2260	1000	Glass	141
	CP6047.PER.B	47	2260	1000	Perf	117



Quick Adjust System



Curved mesh door 80% air flow



H/D Load bearing levelling feet



Swing Lever Locking



Roll into position Castors (option)



Saloon type rear doors



Cattex
XTREME NETWORKING

www.cattexcable.com

Official Distributor of Cattex Products

Eurobyte Technology
sales@eurobyte.co.za
www.eurobyte.co.za

Johannesburg

Unit 7 Cambridge Commercial Park West
22 Witkoppen Road, Paulshof, Gauteng
(011) 234-0142

Cape Town

Unit J13, Centurion Business Park,
Montague Gardens, Western Cape
(021) 551-2804

ROHS
COMPLIANT

euroBYTE
Technology



Made in South Africa

Manufactured to International Standards
Exported Globally