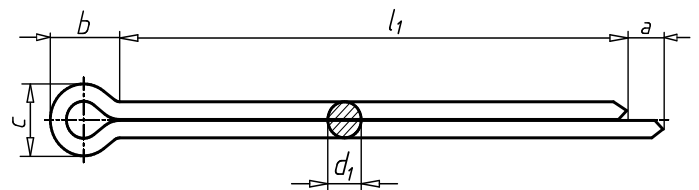


## Split pin

### ISO 1234, A2-70 stainless steel, plain

|                |                    |
|----------------|--------------------|
| Standards      | ISO 1234           |
| Material       | Stainless steel A2 |
| Surface        | Plain              |
| RoHS-compliant | Yes                |



| Nominal diameter (d <sub>1</sub> ) | Length (l <sub>1</sub> ) | Longitudinal external diameter of ring (b) | Transverse external diameter of ring (c) | Length between two pins of a splint (a) | Art. No.           | P. Qty. |
|------------------------------------|--------------------------|--|--|---|--------------------|---------|
| 1 mm                               | 8 mm                     | 3 mm                                       | 1.8 mm                                   | 1.6 mm                                  | <b>5117 218</b>    | 100     |
| 1 mm                               | 10 mm                    | 3 mm                                       | 1.8 mm                                   | 1.6 mm                                  | <b>5117 211 0</b>  | 100     |
| 1 mm                               | 12 mm                    | 3 mm                                       | 1.8 mm                                   | 1.6 mm                                  | <b>5117 211 2</b>  | 100     |
| 1 mm                               | 14 mm                    | 3 mm                                       | 1.8 mm                                   | 1.6 mm                                  | <b>5117 211 4</b>  | 100     |
| 1 mm                               | 16 mm                    | 3 mm                                       | 1.8 mm                                   | 1.6 mm                                  | <b>5117 211 6</b>  | 100     |
| 1 mm                               | 18 mm                    | 3 mm                                       | 1.8 mm                                   | 1.6 mm                                  | <b>5117 211 8</b>  | 100     |
| 1 mm                               | 20 mm                    | 3 mm                                       | 1.8 mm                                   | 1.6 mm                                  | <b>5117 212 0</b>  | 100     |
| 1.2 mm                             | 8 mm                     | 3 mm                                       | 2 mm                                     | 2.5 mm                                  | <b>5117 212 8</b>  | 100     |
| 1.2 mm                             | 10 mm                    | 3 mm                                       | 2 mm                                     | 2.5 mm                                  | <b>5117 212 10</b> | 100     |
| 1.2 mm                             | 12 mm                    | 3 mm                                       | 2 mm                                     | 2.5 mm                                  | <b>5117 212 12</b> | 100     |
| 1.2 mm                             | 14 mm                    | 3 mm                                       | 2 mm                                     | 2.5 mm                                  | <b>5117 212 14</b> | 100     |
| 1.2 mm                             | 16 mm                    | 3 mm                                       | 2 mm                                     | 2.5 mm                                  | <b>5117 212 16</b> | 100     |
| 1.2 mm                             | 18 mm                    | 3 mm                                       | 2 mm                                     | 2.5 mm                                  | <b>5117 212 18</b> | 100     |
| 1.2 mm                             | 20 mm                    | 3 mm                                       | 2 mm                                     | 2.5 mm                                  | <b>5117 212 20</b> | 100     |
| 1.2 mm                             | 22 mm                    | 3 mm                                       | 2 mm                                     | 2.5 mm                                  | <b>5117 212 22</b> | 100     |
| 1.2 mm                             | 25 mm                    | 3 mm                                       | 2 mm                                     | 2.5 mm                                  | <b>5117 212 25</b> | 100     |
| 1.6 mm                             | 8 mm                     | 3.2 mm                                     | 2.8 mm                                   | 2.5 mm                                  | <b>5117 216 8</b>  | 100     |
| 1.6 mm                             | 10 mm                    | 3.2 mm                                     | 2.8 mm                                   | 2.5 mm                                  | <b>5117 216 10</b> | 100     |
| 1.6 mm                             | 12 mm                    | 3.2 mm                                     | 2.8 mm                                   | 2.5 mm                                  | <b>5117 216 12</b> | 100     |
| 1.6 mm                             | 14 mm                    | 3.2 mm                                     | 2.8 mm                                   | 2.5 mm                                  | <b>5117 216 14</b> | 100     |
| 1.6 mm                             | 16 mm                    | 3.2 mm                                     | 2.8 mm                                   | 2.5 mm                                  | <b>5117 216 16</b> | 100     |
| 1.6 mm                             | 18 mm                    | 3.2 mm                                     | 2.8 mm                                   | 2.5 mm                                  | <b>5117 216 18</b> | 100     |
| 1.6 mm                             | 20 mm                    | 3.2 mm                                     | 2.8 mm                                   | 2.5 mm                                  | <b>5117 216 20</b> | 100     |
| 1.6 mm                             | 22 mm                    | 3.2 mm                                     | 2.8 mm                                   | 2.5 mm                                  | <b>5117 216 22</b> | 100     |
| 1.6 mm                             | 25 mm                    | 3.2 mm                                     | 2.8 mm                                   | 2.5 mm                                  | <b>5117 216 25</b> | 100     |
| 1.6 mm                             | 28 mm                    | 3.2 mm                                     | 2.8 mm                                   | 2.5 mm                                  | <b>5117 216 28</b> | 100     |
| 1.6 mm                             | 32 mm                    | 3.2 mm                                     | 2.8 mm                                   | 2.5 mm                                  | <b>5117 216 32</b> | 100     |
| 2 mm                               | 10 mm                    | 4 mm                                       | 3.6 mm                                   | 2.5 mm                                  | <b>5117 221 0</b>  | 100     |
| 2 mm                               | 12 mm                    | 4 mm                                       | 3.6 mm                                   | 2.5 mm                                  | <b>5117 221 2</b>  | 100     |
| 2 mm                               | 14 mm                    | 4 mm                                       | 3.6 mm                                   | 2.5 mm                                  | <b>5117 221 4</b>  | 100     |
| 2 mm                               | 16 mm                    | 4 mm                                       | 3.6 mm                                   | 2.5 mm                                  | <b>5117 221 6</b>  | 100     |
| 2 mm                               | 18 mm                    | 4 mm                                       | 3.6 mm                                   | 2.5 mm                                  | <b>5117 221 8</b>  | 100     |
| 2 mm                               | 20 mm                    | 4 mm                                       | 3.6 mm                                   | 2.5 mm                                  | <b>5117 222 0</b>  | 100     |

| Nominal diameter (d <sub>1</sub> ) | Length (l <sub>1</sub> ) | Longitudinal external diameter of ring (b) | Transverse external diameter of ring (c) | Length between two pins of a splint (a) | Art. No.           | P. Qty. |
|------------------------------------|--------------------------|--|--|---|--------------------|---------|
| 2 mm                               | 22 mm                    | 4 mm                                       | 3.6 mm                                   | 2.5 mm                                  | <b>5117 222 2</b>  | 100     |
| 2 mm                               | 25 mm                    | 4 mm                                       | 3.6 mm                                   | 2.5 mm                                  | <b>5117 222 5</b>  | 100     |
| 2 mm                               | 28 mm                    | 4 mm                                       | 3.6 mm                                   | 2.5 mm                                  | <b>5117 222 8</b>  | 100     |
| 2 mm                               | 32 mm                    | 4 mm                                       | 3.6 mm                                   | 2.5 mm                                  | <b>5117 223 2</b>  | 100     |
| 2 mm                               | 36 mm                    | 4 mm                                       | 3.6 mm                                   | 2.5 mm                                  | <b>5117 223 6</b>  | 100     |
| 2 mm                               | 40 mm                    | 4 mm                                       | 3.6 mm                                   | 2.5 mm                                  | <b>5117 224 0</b>  | 100     |
| 2.5 mm                             | 12 mm                    | 5 mm                                       | 4.6 mm                                   | 2.5 mm                                  | <b>5117 225 12</b> | 100     |
| 2.5 mm                             | 14 mm                    | 5 mm                                       | 4.6 mm                                   | 2.5 mm                                  | <b>5117 225 14</b> | 100     |
| 2.5 mm                             | 16 mm                    | 5 mm                                       | 4.6 mm                                   | 2.5 mm                                  | <b>5117 225 16</b> | 100     |
| 2.5 mm                             | 18 mm                    | 5 mm                                       | 4.6 mm                                   | 2.5 mm                                  | <b>5117 225 18</b> | 100     |
| 2.5 mm                             | 20 mm                    | 5 mm                                       | 4.6 mm                                   | 2.5 mm                                  | <b>5117 225 20</b> | 100     |
| 2.5 mm                             | 22 mm                    | 5 mm                                       | 4.6 mm                                   | 2.5 mm                                  | <b>5117 225 22</b> | 100     |
| 2.5 mm                             | 25 mm                    | 5 mm                                       | 4.6 mm                                   | 2.5 mm                                  | <b>5117 225 25</b> | 100     |
| 2.5 mm                             | 28 mm                    | 5 mm                                       | 4.6 mm                                   | 2.5 mm                                  | <b>5117 225 28</b> | 100     |
| 2.5 mm                             | 32 mm                    | 5 mm                                       | 4.6 mm                                   | 2.5 mm                                  | <b>5117 225 32</b> | 100     |
| 2.5 mm                             | 36 mm                    | 5 mm                                       | 4.6 mm                                   | 2.5 mm                                  | <b>5117 225 36</b> | 100     |
| 2.5 mm                             | 40 mm                    | 5 mm                                       | 4.6 mm                                   | 2.5 mm                                  | <b>5117 225 40</b> | 100     |
| 2.5 mm                             | 45 mm                    | 5 mm                                       | 4.6 mm                                   | 2.5 mm                                  | <b>5117 225 45</b> | 100     |
| 2.5 mm                             | 50 mm                    | 5 mm                                       | 4.6 mm                                   | 2.5 mm                                  | <b>5117 225 50</b> | 100     |
| 3.2 mm                             | 14 mm                    | 6.4 mm                                     | 5.8 mm                                   | 3.2 mm                                  | <b>5117 232 14</b> | 100     |
| 3.2 mm                             | 16 mm                    | 6.4 mm                                     | 5.8 mm                                   | 3.2 mm                                  | <b>5117 232 16</b> | 100     |
| 3.2 mm                             | 18 mm                    | 6.4 mm                                     | 5.8 mm                                   | 3.2 mm                                  | <b>5117 232 18</b> | 100     |
| 3.2 mm                             | 20 mm                    | 6.4 mm                                     | 5.8 mm                                   | 3.2 mm                                  | <b>5117 232 20</b> | 100     |
| 3.2 mm                             | 22 mm                    | 6.4 mm                                     | 5.8 mm                                   | 3.2 mm                                  | <b>5117 232 22</b> | 100     |
| 3.2 mm                             | 25 mm                    | 6.4 mm                                     | 5.8 mm                                   | 3.2 mm                                  | <b>5117 232 25</b> | 100     |
| 3.2 mm                             | 28 mm                    | 6.4 mm                                     | 5.8 mm                                   | 3.2 mm                                  | <b>5117 232 28</b> | 100     |
| 3.2 mm                             | 32 mm                    | 6.4 mm                                     | 5.8 mm                                   | 3.2 mm                                  | <b>5117 232 32</b> | 100     |
| 3.2 mm                             | 36 mm                    | 6.4 mm                                     | 5.8 mm                                   | 3.2 mm                                  | <b>5117 232 36</b> | 100     |
| 3.2 mm                             | 40 mm                    | 6.4 mm                                     | 5.8 mm                                   | 3.2 mm                                  | <b>5117 232 40</b> | 100     |
| 3.2 mm                             | 45 mm                    | 6.4 mm                                     | 5.8 mm                                   | 3.2 mm                                  | <b>5117 232 45</b> | 100     |
| 3.2 mm                             | 56 mm                    | 6.4 mm                                     | 5.8 mm                                   | 3.2 mm                                  | <b>5117 232 56</b> | 100     |
| 3.2 mm                             | 63 mm                    | 6.4 mm                                     | 5.8 mm                                   | 3.2 mm                                  | <b>5117 232 63</b> | 100     |
| 3.2 mm                             | 71 mm                    | 6.4 mm                                     | 5.8 mm                                   | 3.2 mm                                  | <b>5117 232 71</b> | 100     |
| 4 mm                               | 18 mm                    | 8 mm                                       | 7.4 mm                                   | 4 mm                                    | <b>5117 241 8</b>  | 100     |
| 4 mm                               | 20 mm                    | 8 mm                                       | 7.4 mm                                   | 4 mm                                    | <b>5117 242 0</b>  | 100     |
| 4 mm                               | 22 mm                    | 8 mm                                       | 7.4 mm                                   | 4 mm                                    | <b>5117 242 2</b>  | 100     |
| 4 mm                               | 25 mm                    | 8 mm                                       | 7.4 mm                                   | 4 mm                                    | <b>5117 242 5</b>  | 100     |
| 4 mm                               | 28 mm                    | 8 mm                                       | 7.4 mm                                   | 4 mm                                    | <b>5117 242 8</b>  | 100     |
| 4 mm                               | 32 mm                    | 8 mm                                       | 7.4 mm                                   | 4 mm                                    | <b>5117 243 2</b>  | 100     |
| 4 mm                               | 36 mm                    | 8 mm                                       | 7.4 mm                                   | 4 mm                                    | <b>5117 243 6</b>  | 100     |
| 4 mm                               | 40 mm                    | 8 mm                                       | 7.4 mm                                   | 4 mm                                    | <b>5117 244 0</b>  | 100     |
| 4 mm                               | 45 mm                    | 8 mm                                       | 7.4 mm                                   | 4 mm                                    | <b>5117 244 5</b>  | 100     |
| 4 mm                               | 50 mm                    | 8 mm                                       | 7.4 mm                                   | 4 mm                                    | <b>5117 245 0</b>  | 100     |
| 4 mm                               | 56 mm                    | 8 mm                                       | 7.4 mm                                   | 4 mm                                    | <b>5117 245 6</b>  | 100     |
| 4 mm                               | 63 mm                    | 8 mm                                       | 7.4 mm                                   | 4 mm                                    | <b>5117 246 3</b>  | 100     |
| 4 mm                               | 71 mm                    | 8 mm                                       | 7.4 mm                                   | 4 mm                                    | <b>5117 247 1</b>  | 100     |
| 4 mm                               | 80 mm                    | 8 mm                                       | 7.4 mm                                   | 4 mm                                    | <b>5117 248 0</b>  | 100     |
| 5 mm                               | 22 mm                    | 10 mm                                      | 9.2 mm                                   | 4 mm                                    | <b>5117 252 2</b>  | 100     |
| 5 mm                               | 25 mm                    | 10 mm                                      | 9.2 mm                                   | 4 mm                                    | <b>5117 252 5</b>  | 100     |
| 5 mm                               | 28 mm                    | 10 mm                                      | 9.2 mm                                   | 4 mm                                    | <b>5117 252 8</b>  | 100     |
| 5 mm                               | 32 mm                    | 10 mm                                      | 9.2 mm                                   | 4 mm                                    | <b>5117 253 2</b>  | 100     |
| 5 mm                               | 36 mm                    | 10 mm                                      | 9.2 mm                                   | 4 mm                                    | <b>5117 253 6</b>  | 100     |
| 5 mm                               | 40 mm                    | 10 mm                                      | 9.2 mm                                   | 4 mm                                    | <b>5117 254 0</b>  | 100     |

| Nominal diameter (d <sub>1</sub> ) | Length (l <sub>1</sub> ) | Longitudinal external diameter of ring (b) | Transverse external diameter of ring (c) | Length between two pins of a splint (a) | Art. No.            | P. Qty. |
|------------------------------------|--------------------------|--|--|---|---------------------|---------|
| 5 mm                               | 45 mm                    | 10 mm                                      | 9.2 mm                                   | 4 mm                                    | <b>5117 254 5</b>   | 100     |
| 5 mm                               | 50 mm                    | 10 mm                                      | 9.2 mm                                   | 4 mm                                    | <b>5117 255 0</b>   | 100     |
| 5 mm                               | 56 mm                    | 10 mm                                      | 9.2 mm                                   | 4 mm                                    | <b>5117 255 6</b>   | 100     |
| 5 mm                               | 63 mm                    | 10 mm                                      | 9.2 mm                                   | 4 mm                                    | <b>5117 256 3</b>   | 100     |
| 5 mm                               | 71 mm                    | 10 mm                                      | 9.2 mm                                   | 4 mm                                    | <b>5117 257 1</b>   | 100     |
| 5 mm                               | 80 mm                    | 10 mm                                      | 9.2 mm                                   | 4 mm                                    | <b>5117 258 0</b>   | 100     |
| 5 mm                               | 90 mm                    | 10 mm                                      | 9.2 mm                                   | 4 mm                                    | <b>5117 259 0</b>   | 100     |
| 5 mm                               | 100 mm                   | 10 mm                                      | 9.2 mm                                   | 4 mm                                    | <b>5117 251 00</b>  | 100     |
| 6.3 mm                             | 32 mm                    | 12.6 mm                                    | 11.8 mm                                  | 4 mm                                    | <b>5117 263 32</b>  | 100     |
| 6.3 mm                             | 36 mm                    | 12.6 mm                                    | 11.8 mm                                  | 4 mm                                    | <b>5117 263 36</b>  | 100     |
| 6.3 mm                             | 40 mm                    | 12.6 mm                                    | 11.8 mm                                  | 4 mm                                    | <b>5117 263 40</b>  | 100     |
| 6.3 mm                             | 45 mm                    | 12.6 mm                                    | 11.8 mm                                  | 4 mm                                    | <b>5117 263 45</b>  | 100     |
| 6.3 mm                             | 50 mm                    | 12.6 mm                                    | 11.8 mm                                  | 4 mm                                    | <b>5117 263 50</b>  | 100     |
| 6.3 mm                             | 56 mm                    | 12.6 mm                                    | 11.8 mm                                  | 4 mm                                    | <b>5117 263 56</b>  | 100     |
| 6.3 mm                             | 63 mm                    | 12.6 mm                                    | 11.8 mm                                  | 4 mm                                    | <b>5117 263 63</b>  | 100     |
| 6.3 mm                             | 71 mm                    | 12.6 mm                                    | 11.8 mm                                  | 4 mm                                    | <b>5117 263 71</b>  | 100     |
| 6.3 mm                             | 80 mm                    | 12.6 mm                                    | 11.8 mm                                  | 4 mm                                    | <b>5117 263 80</b>  | 100     |
| 6.3 mm                             | 90 mm                    | 12.6 mm                                    | 11.8 mm                                  | 4 mm                                    | <b>5117 263 90</b>  | 100     |
| 6.3 mm                             | 100 mm                   | 12.6 mm                                    | 11.8 mm                                  | 4 mm                                    | <b>5117 263 100</b> | 100     |
| 6.3 mm                             | 112 mm                   | 12.6 mm                                    | 11.8 mm                                  | 4 mm                                    | <b>5117 263 112</b> | 100     |
| 6.3 mm                             | 125 mm                   | 12.6 mm                                    | 11.8 mm                                  | 4 mm                                    | <b>5117 263 125</b> | 100     |
| 8 mm                               | 40 mm                    | 16 mm                                      | 15 mm                                    | 4 mm                                    | <b>5117 284 0</b>   | 50      |
| 8 mm                               | 45 mm                    | 16 mm                                      | 15 mm                                    | 4 mm                                    | <b>5117 284 5</b>   | 50      |
| 8 mm                               | 50 mm                    | 16 mm                                      | 15 mm                                    | 4 mm                                    | <b>5117 285 0</b>   | 50      |
| 8 mm                               | 56 mm                    | 16 mm                                      | 15 mm                                    | 4 mm                                    | <b>5117 285 6</b>   | 25      |
| 8 mm                               | 63 mm                    | 16 mm                                      | 15 mm                                    | 4 mm                                    | <b>5117 286 3</b>   | 25      |
| 8 mm                               | 71 mm                    | 16 mm                                      | 15 mm                                    | 4 mm                                    | <b>5117 287 1</b>   | 25      |
| 8 mm                               | 80 mm                    | 16 mm                                      | 15 mm                                    | 4 mm                                    | <b>5117 288 0</b>   | 25      |
| 8 mm                               | 90 mm                    | 16 mm                                      | 15 mm                                    | 4 mm                                    | <b>5117 289 0</b>   | 25      |
| 8 mm                               | 100 mm                   | 16 mm                                      | 15 mm                                    | 4 mm                                    | <b>5117 281 00</b>  | 25      |
| 8 mm                               | 112 mm                   | 16 mm                                      | 15 mm                                    | 4 mm                                    | <b>5117 281 12</b>  | 25      |
| 8 mm                               | 125 mm                   | 16 mm                                      | 15 mm                                    | 4 mm                                    | <b>5117 281 25</b>  | 25      |
| 8 mm                               | 140 mm                   | 16 mm                                      | 15 mm                                    | 4 mm                                    | <b>5117 281 40</b>  | 25      |
| 8 mm                               | 160 mm                   | 16 mm                                      | 15 mm                                    | 4 mm                                    | <b>5117 281 60</b>  | 25      |
| 10 mm                              | 45 mm                    | 20 mm                                      | 19 mm                                    | 6.3 mm                                  | <b>5117 210 45</b>  | 25      |
| 10 mm                              | 50 mm                    | 20 mm                                      | 19 mm                                    | 6.3 mm                                  | <b>5117 210 50</b>  | 25      |
| 10 mm                              | 56 mm                    | 20 mm                                      | 19 mm                                    | 6.3 mm                                  | <b>5117 210 56</b>  | 25      |
| 10 mm                              | 63 mm                    | 20 mm                                      | 19 mm                                    | 6.3 mm                                  | <b>5117 210 63</b>  | 25      |
| 10 mm                              | 71 mm                    | 20 mm                                      | 19 mm                                    | 6.3 mm                                  | <b>5117 210 71</b>  | 25      |
| 10 mm                              | 80 mm                    | 20 mm                                      | 19 mm                                    | 6.3 mm                                  | <b>5117 210 80</b>  | 25      |
| 10 mm                              | 90 mm                    | 20 mm                                      | 19 mm                                    | 6.3 mm                                  | <b>5117 210 90</b>  | 25      |
| 10 mm                              | 100 mm                   | 20 mm                                      | 19 mm                                    | 6.3 mm                                  | <b>5117 210 100</b> | 25      |
| 10 mm                              | 112 mm                   | 20 mm                                      | 19 mm                                    | 6.3 mm                                  | <b>5117 210 112</b> | 25      |
| 10 mm                              | 125 mm                   | 20 mm                                      | 19 mm                                    | 6.3 mm                                  | <b>5117 210 125</b> | 25      |
| 10 mm                              | 140 mm                   | 20 mm                                      | 19 mm                                    | 6.3 mm                                  | <b>5117 210 140</b> | 25      |
| 10 mm                              | 160 mm                   | 20 mm                                      | 19 mm                                    | 6.3 mm                                  | <b>5117 210 160</b> | 25      |
| 10 mm                              | 180 mm                   | 20 mm                                      | 19 mm                                    | 6.3 mm                                  | <b>5117 210 180</b> | 25      |
| 10 mm                              | 200 mm                   | 20 mm                                      | 19 mm                                    | 6.3 mm                                  | <b>5117 210 200</b> | 25      |

## Notice

Replaces DIN 94