

PARTS CATALOG

FLORY

SWEEPER ATTACHMENTS: SIDE KICK & BRUSH OPTIONS

As much as possible, parts are arranged in groups of related parts. Parts are illustrated and identified by reference numbers that correspond to the parts list. UAR in "Quantity" column indicates that this part is "Used As Required." NSS in "Part No." column indicates that this part is "Not Sold Separately." Serial number breaks and manufacturing numbers breaks are noted by "~". (For Example "s/n 101~" indicates "serial number 101 and after.") or ("mfg.# ~251" indicates "manufacturing number 251 and before.")

TERMS "RIGHT-HAND" AND "LEFT-HAND"

"Right-hand" and "Left-hand" sides of this machine are determined by standing at the rear of the unit and facing the direction of forward travel.

ORDERS

Orders should plainly specify correct part number, full description, quantity requested machine model and serial numbers, method of shipping, and shipping address.



PHONE (209) 545-1167 FAX (209) 545-4924
FLORY INDUSTRIES, INC. 4737 TOOMES RD PO BOX 908 SALIDA CA 95368

SIDE KICK SWEEPER & BRUSH OPTIONS



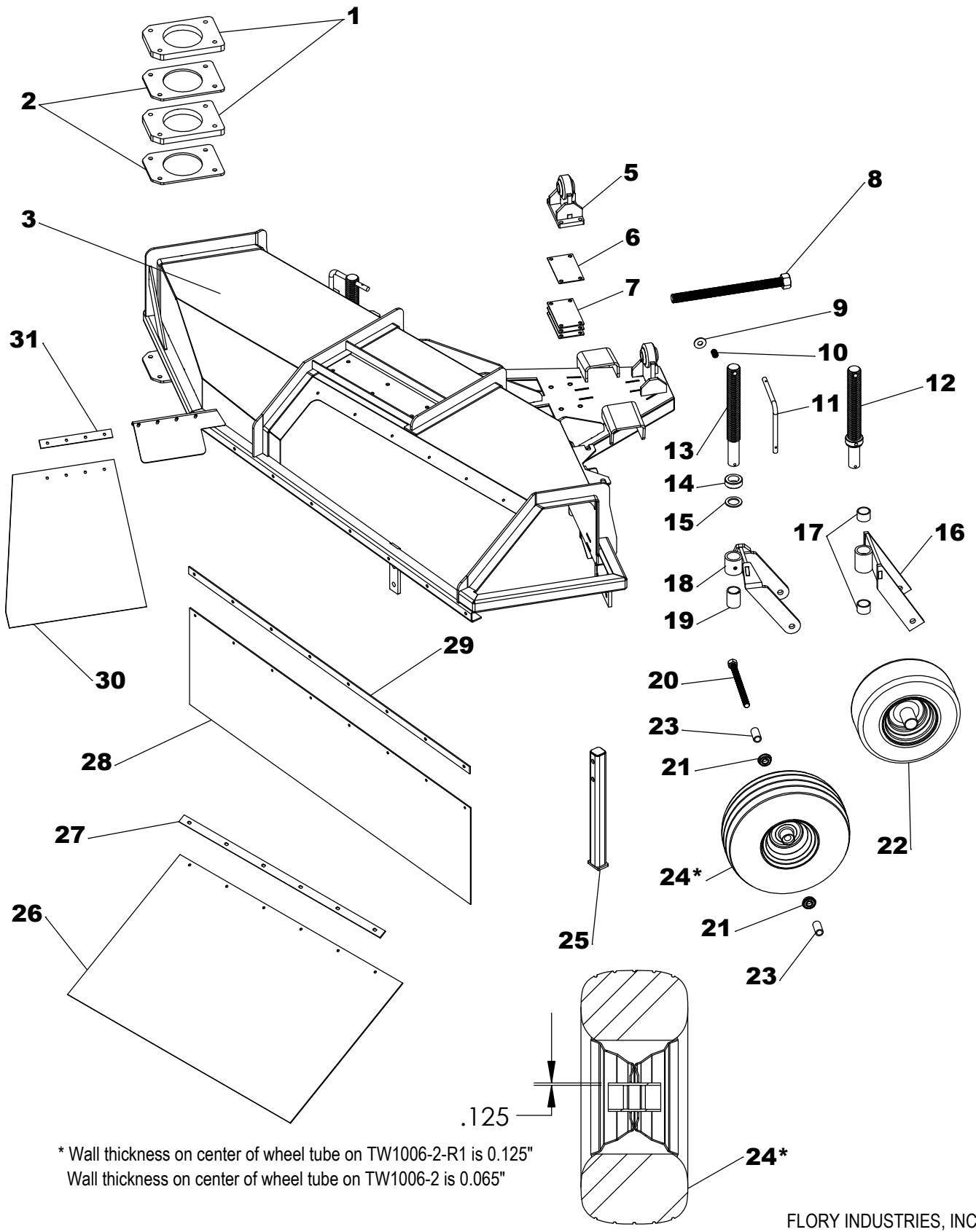
SERIAL NUMBER: _____

DATE OF PURCHASE: _____

SIDE KICK & BRUSH OPTIONS PARTS MANUAL

TABLE OF CONTENTS

REEL COVER, CURTAINS & MISC. PARTS	4-5
REEL DRIVE PARTS	6-7
FRAMES & MISC. PARTS	8-9
ELECTRICAL SCHEMATICS	10-11
SIDE KICK HYDRAULIC SCHEMATICS	12-13
LEFT SIDE BRUSH OPTION	14-17
LEFT SIDE BRUSH HYDRAULIC SCHEMATICS	18-21
RIGHT SIDE BRUSH OPTION	22-23
RIGHT SIDE BRUSH HYDRAULIC SCHEMATICS	24-25



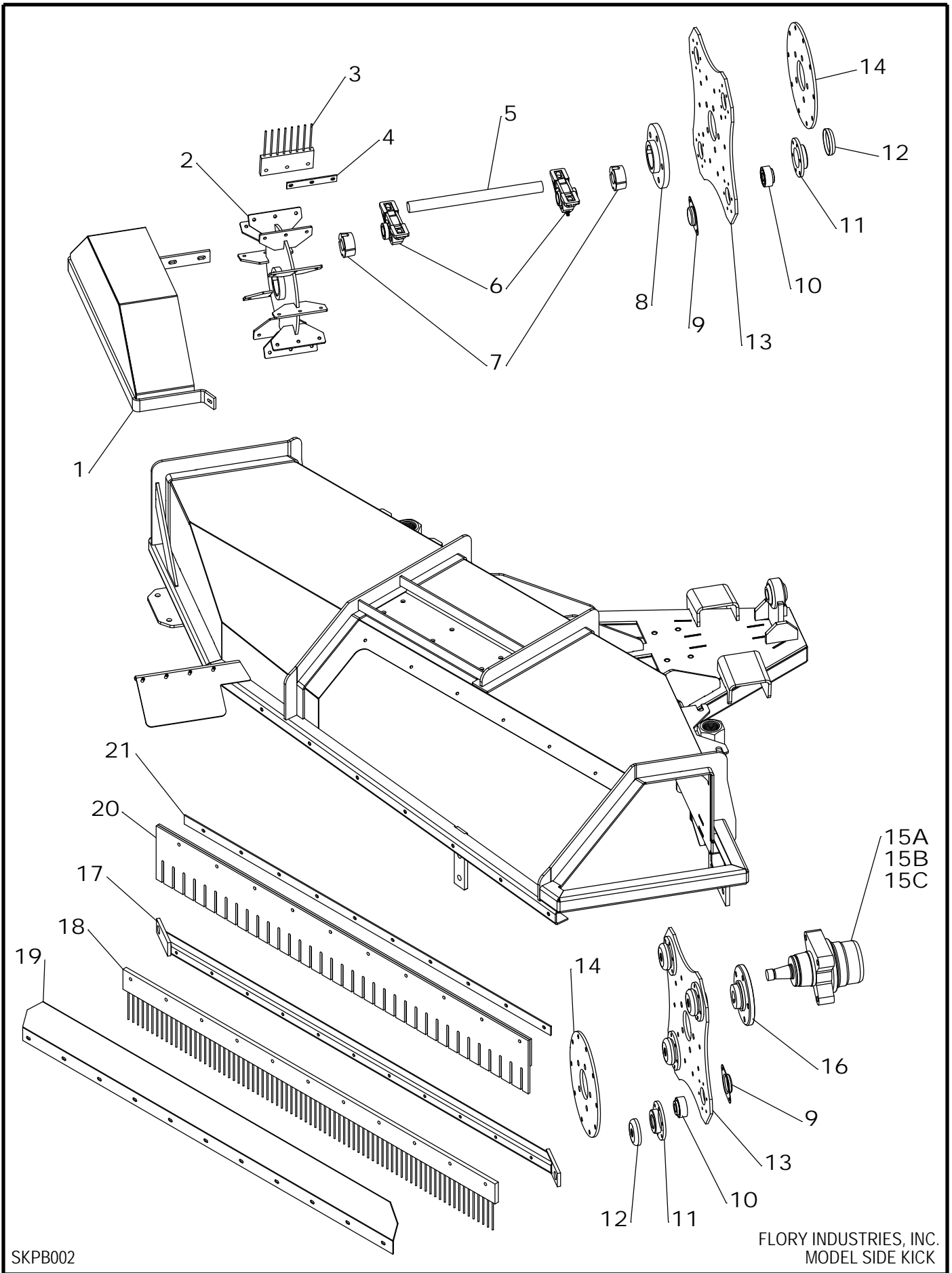
* Wall thickness on center of wheel tube on TW1006-2-R1 is 0.125"
 Wall thickness on center of wheel tube on TW1006-2 is 0.065"

SKPB001

FLORY INDUSTRIES, INC.
 MODEL SIDE KICK

REF.

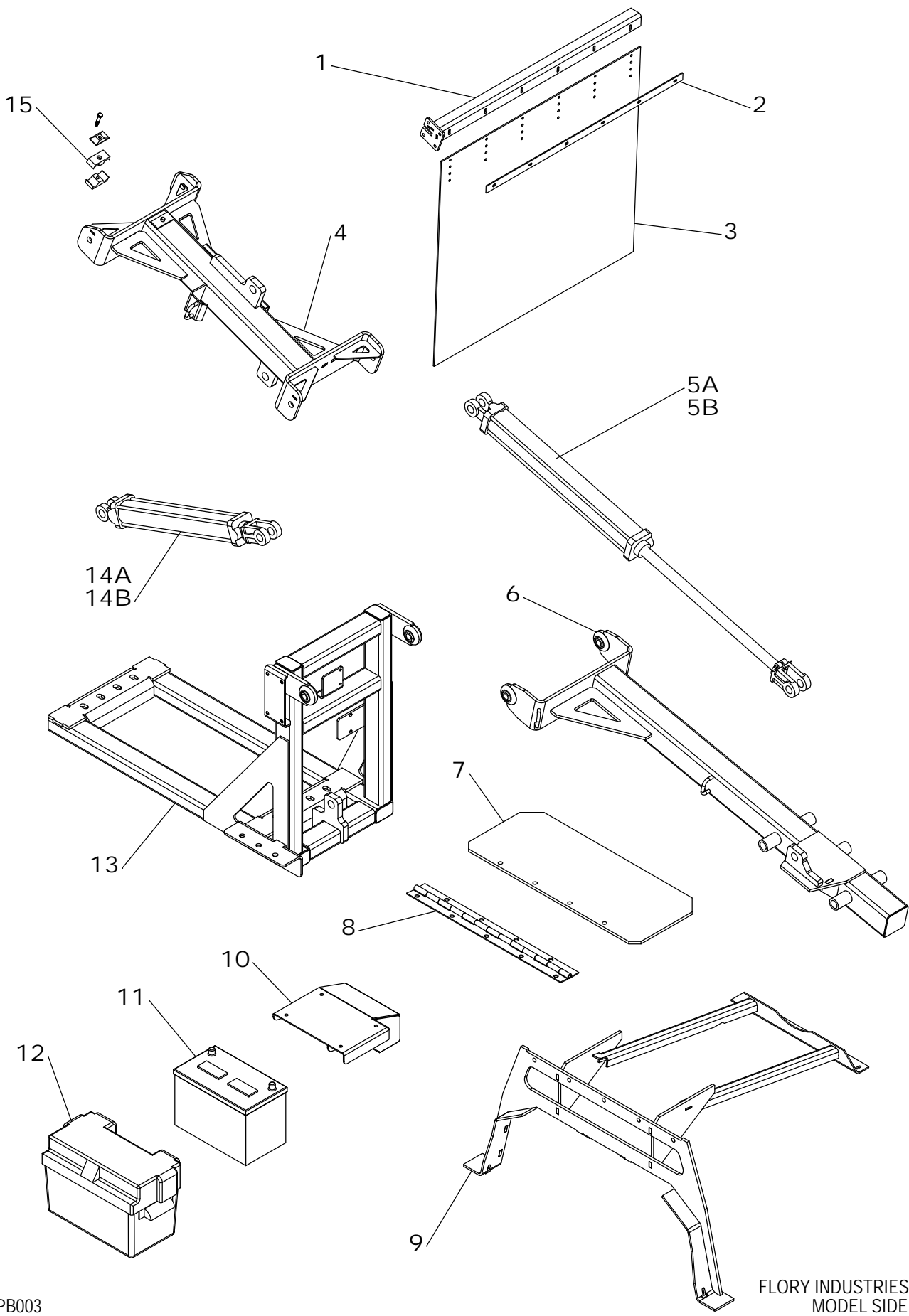
NO.	PART NO.	DESCRIPTION	QTY.
1	T39177	SPACER, rubber	2
2	T69707	SPACER	2
3	T69777	FRAME, reel	1
		(mfg.# 986~ requires T69357, T69457, T69557)	
4	RB5977	BUMPER, rubber	2
5	T69357	ADJUSTMENT, swivel (mfg.# 986~)	1
6	T69557	SPACER, 14 Gauge (mfg.# 986~)	UAR
7	T69457	SPACER, 12 Gauge (mfg.# 986~)	UAR
8	T19077	BOLT, lift	1
9	1/2FW-F	SAE FLAT WASHER	2
10	523	SPRING	2
11	T69127	HANDLE, adjustment	2
12	T59177	SHAFT, yoke pivot (mfg.# ~897)	2
13	T59277	SHAFT, yoke pivot (mfg.# 996~)	2
14	C104	COLLAR, shaft (mfg.# 996~)	2
15	BU1210	BUSHING, machined (mfg.# 996~)	2
16	T69877	YOKE (mfg.# ~897)	2
17	H694	BUSHING, yoke (mfg.# ~897)	4
18	T69887	YOKE (mfg.# 996~)	2
19	BU3108	BUSHING, yoke (mfg.# 996~)	2
20	T19277	BOLT, axle	2
21A	BR1977	BEARING, wheel (use w/ TW1006-2)	4
21B	BR1978	BEARING, wheel (use w/ TW1006-2-R1)	4
22	TW1006	TIRE & WHEEL ASSEMBLY (13 X 5.00-6)(mfg.# ~897)	2
23	T19777	SPACER, wheel (mfg.# 996~)	4
24A	TW1006-2	TIRE & WHEEL ASSEMBLY (15 X 6.00-6)(mfg.# 996~)	2
24B	TW1006-2-R1	TIRE & WHEEL ASSEMBLY (15 X 6.00-6)(mfg.# 996~)	2
25	T69677	STAND, support	1
26	T61055	CLAMPSTRIP, nut deflector	1
27	T30555	DEFLECTOR, nut	1
28	T69287	CLAMPSTRIP, bottom curtain	1
29	T39777	CURTAIN, bottom	1
30	T69977	CLAMPSTRIP, top/side curtain	2
31	T39477	CURTAIN, top	1



SKPB002

REF.

NO.	PART NO.	DESCRIPTION	QTY.
1	T29347	COVER, paddle wheel	1
2	F61758	WHEEL, paddle	1
3	T3041	PADDLE, wire end	10
4	T6114	CLAMPSTRIP, paddle	10
5	T59077	SHAFT, endplate	1
6	PBC2100	BEARING, pillow block	2
7	1610100	BUSHING	2
8	T69547	HUB, endplate	1
9	SE2689	COVER, reel bearing (rear)	8
10	BR0690	BEARING, tine bar (bearing only)	8
11	BR1690	BEARING, tine bar (housing & bearing)	8
12	CV0690	COVER, reel bearing (front)	8
13	T69507	ENDPLATE, reel (4 bar)	2
	T61505	ENDPLATE, reel (5 bar)	2
14	T69527	PLATE, support	2
15A	HM1152	MOTOR, reel	1
15B	HM1152-K	SEAL KIT, motor	1
15C	SF3152	SHAFT, motor	1
16	23399	HUB, reel drive	1
17	T69797	TINE BAR (mfg#. 840~)	4
	TK6079	TINE BAR (mfg#. ~824)	5
18	T39197	TINE, wire (mfg#. 840~)	4
	TK3019	TINE, wire (mfg#. ~824)	5
19	T69927	RISER, tine bar (mfg#. 840~)	4
	T69917	RISER, tine bar (mfg#. ~824)	5
20	TK3032	SWEEP (mfg#. ~824)	5
21	T69487	CLAMPSTRIP, sweep (mfg#. ~824)	5

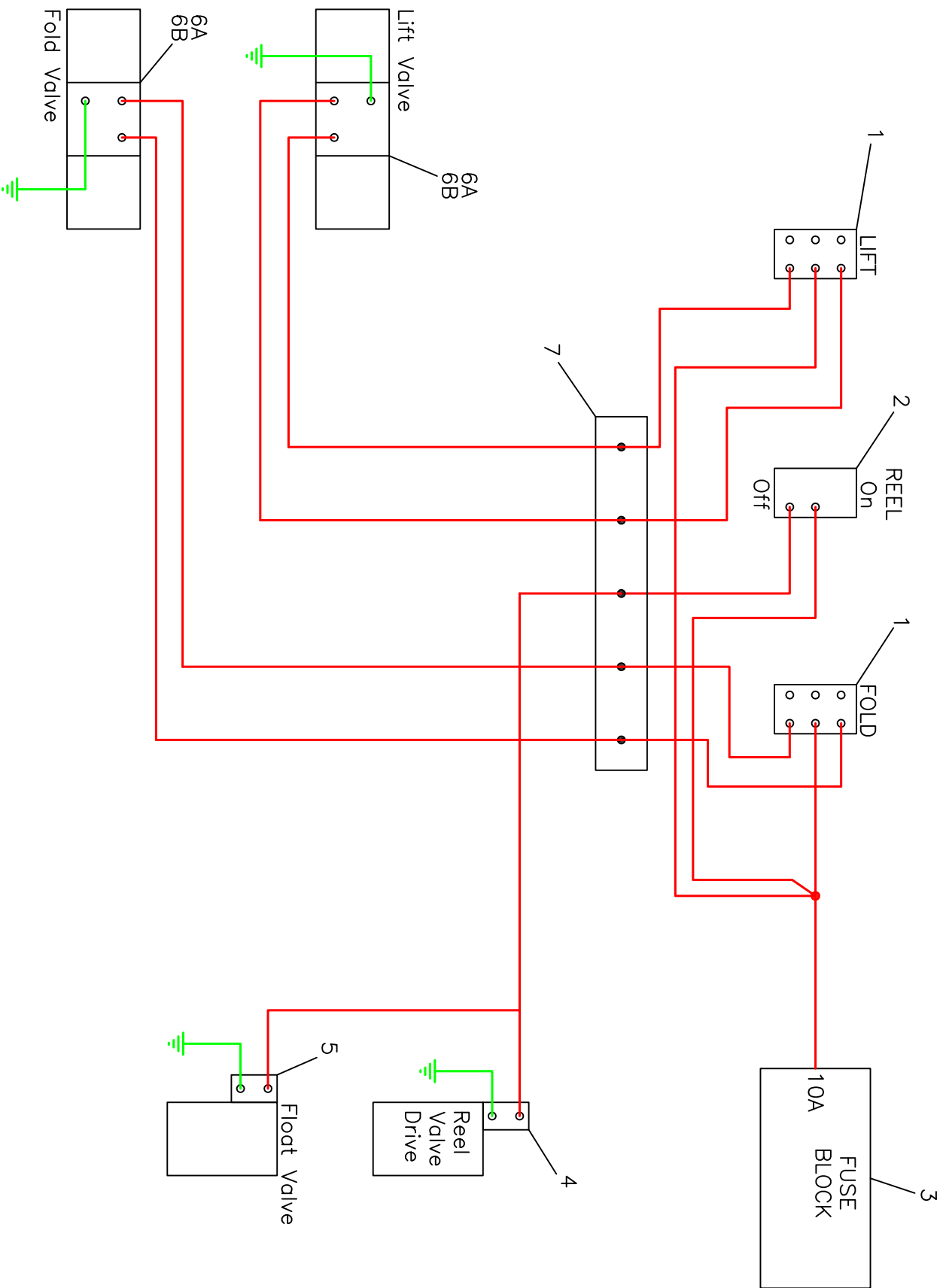


SKPB003

FLORY INDUSTRIES, INC.
MODEL SIDE KICK

REF.

NO.	PART NO.	DESCRIPTION	QTY.
1	T69257	MOUNT, curtain (mfg.# 986~)	1
2	T69977	CLAMPSTRIP, top/side curtain	2
3	T39077	CURTAIN, rubber	1
4	T69277	I-FRAME	1
		(mfg.# 986~ requires T69257)	
5A	HC2522	CYLINDER, folding	1
5B	1C4433	SEAL KIT, cylinder	1
6	T69377	T-FRAME	1
7	T29197	TOP, support frame	1
8	T29137	HINGE, support frame	1
9	T69477	FRAME, support	1
10	T67007	MOUNT, battery	1
11	C27-XHD	BATTERY	1
12	CV0085	BOX, battery	1
13	T69077	L-FRAME	1
14A	HC2518	CYLINDER, lift	1
14B	1C4433	SEAL KIT, cylinder	1
15	CA6012-2T	CLAMP, hose block	1



CIRCUIT LEGEND

—	POSITIVE
—	GROUND

REVISION RECORD

A	
B	
C	
D	

DWN BY: SR	DATE: 7/16/07
FILE NAME: S12SC001	

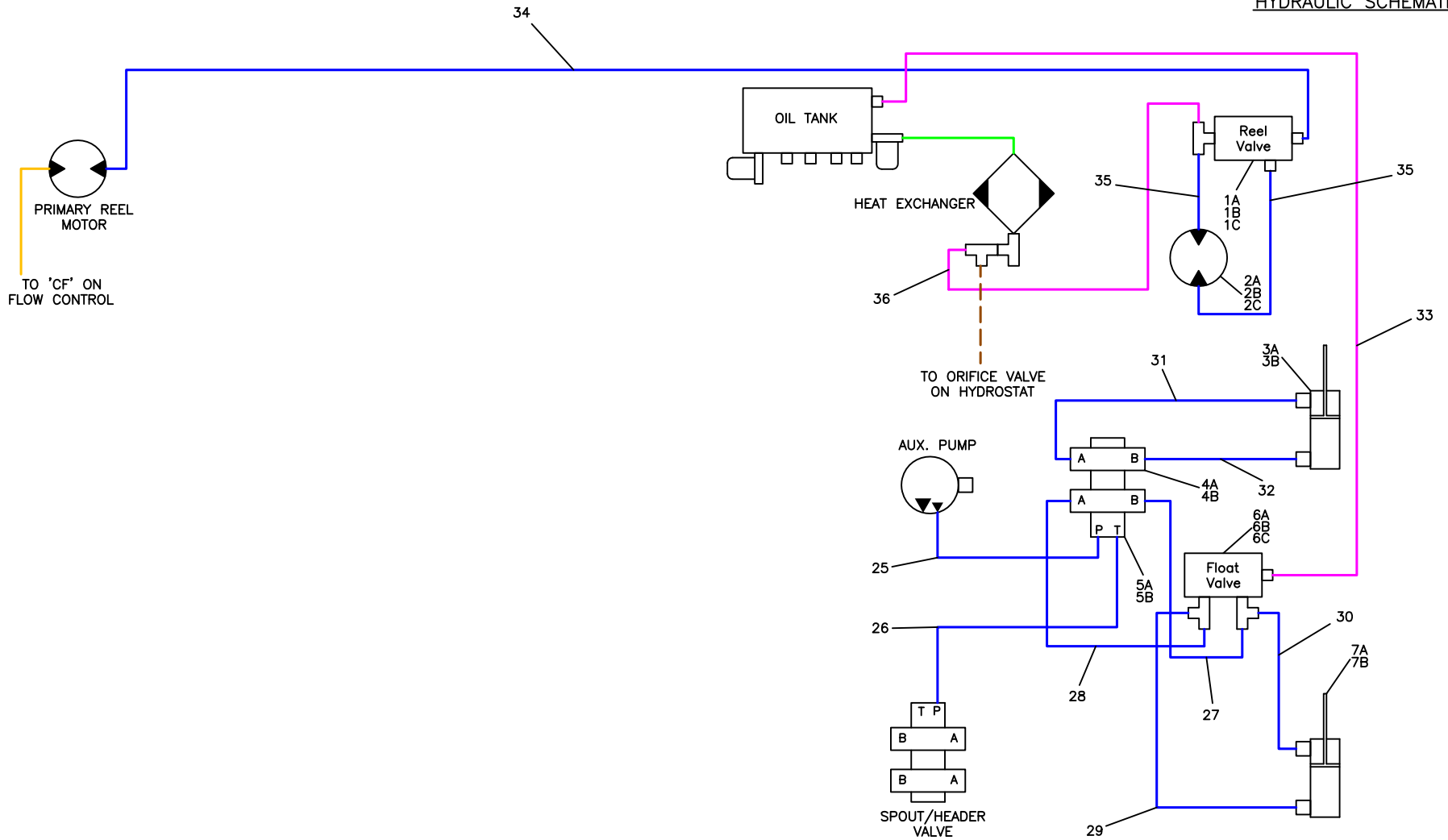
FLORY
INDUSTRIES

REF.

NO.	PART NO.	DESCRIPTION	QTY.
1	S208C	SWITCH, toggle	2
2	S2098	SWITCH, toggle	1
3	ME3012	BLOCK, fuse	1
4	ME1777	COIL, reel valve	1
5	ME1877	COIL, float valve	1
6A	VL5090	VALVE, directional control	2
6B	ME1260	COIL, valve	2
7	ME3990	BLOCK, terminal (90 SERIES ONLY)	1

2007 ~ PRODUCTION

SIDE KICK
HYDRAULIC SCHEMATIC



COMPONENTS

- 1 = Reel Valve
- 2 = Reel Motor
- 3 = Lift Cylinder
- 4 = Directional Valve
- 5 = Manifold
- 6 = Float Valve
- 7 = Folding Cylinder

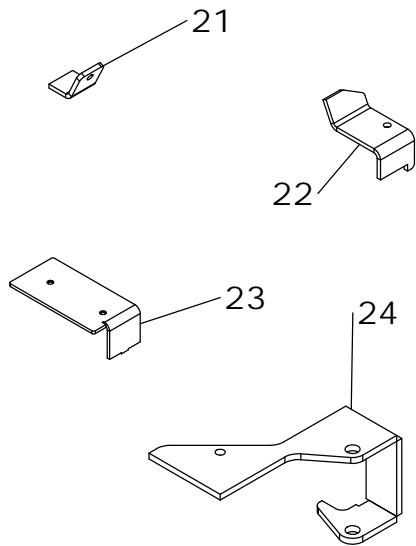
PRESSURE SETTINGS
5B = Hyd. Cylinder Relief - 1200 PSI

CIRCUIT LEGEND		REVISION RECORD		DWN BY: SR	6/13/08	FLORY INDUSTRIES
— STD SWEEPER AUX.	— SIDE KICK AUX.	A Added brush attachment option 1/28/09 SR	B	FILE NAME: S12SC002		
— STD. SWEEPER RETURN	— SIDE KICK RET.	C	D			

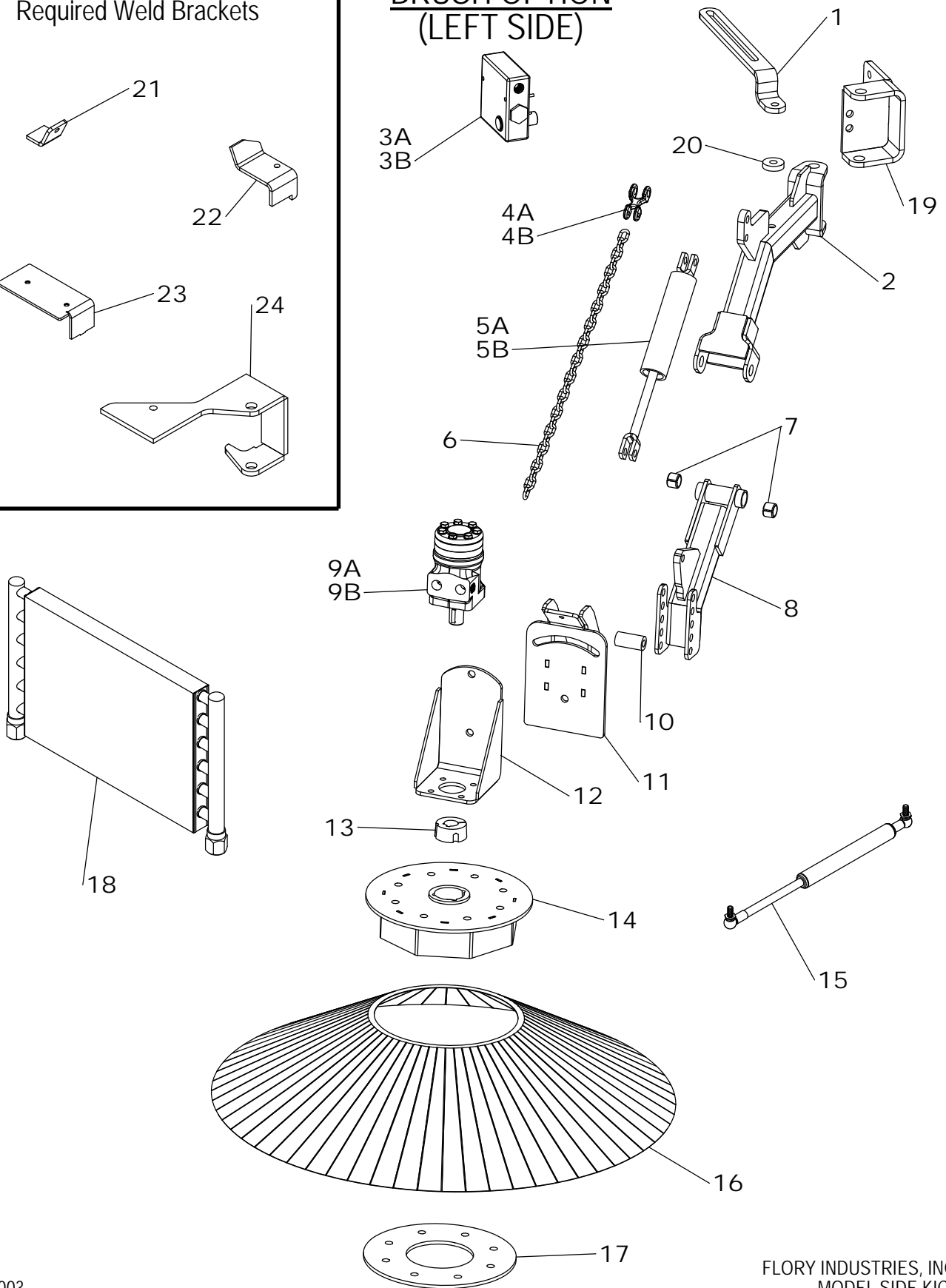
REF.

NO.	PART NO.	DESCRIPTION	QTY.
1A	VL5077	VALVE, reel	1
1B	MF7077	BODY, valve	1
1C	ME1777	COIL, 12v	1
2A	HM1152	MOTOR, reel	1
2B	HM1152-K	SEAL KIT, motor	1
2C	SF3152	SHAFT, motor	1
3A	HC2518	CYLINDER, lift	1
3B	1C4433	SEAL KIT, cylinder	1
4A	VL5090	VALVE, directional control	2
4B	ME1260	COIL, valve	2
5A	MF7090	MANIFOLD	1
5B	VL7090	VALVE, relief	1
6A	VL5177	VALVE, float	1
6B	MF7177	BODY, line	1
6C	ME1877	COIL, 12v	1
7A	HC2522	CYLINDER, folding	1
7B	1C4433	SEAL KIT, cylinder	1
25		HOSE, aux. pump to cyl. valve port P	1
26		HOSE, cyl. valve port 'T' to original hose	1
27		HOSE, cyl. valve top 'B' port to float valve port #4 tee	1
28		HOSE, cyl. valve top 'A' port to float valve port #2 tee	1
29		HOSE, float valve port #2 tee to folding cyl. base end	1
30		HOSE, float valve port #4 tee to folding cyl. rod end	1
31		HOSE, cyl. valve bott. 'B' port to lift cyl. base end	1
32		HOSE, cyl. valve top 'A' port to lift cyl. rod end	1
33		HOSE, float valve port #1 to tank	1
34		HOSE, main reel drive motor right port to reel drive valve port #2	1
35		HOSE, reel drv pt #3 to rl mtr lft. pt & reel drv vlv pt #2 to reel mtr rt. pt	2
36		HOSE, reel drive valve port #2 to heat exchanger tee	1

77/78 series S/N ~ 3880
 56 series S/N ~ 3911
 Required Weld Brackets



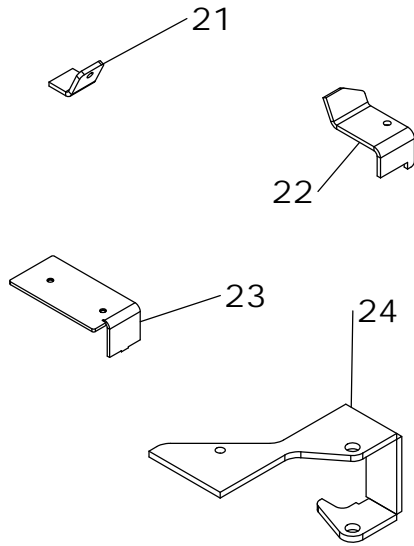
**SWEeper HEAD
 BRUSH OPTION
 (LEFT SIDE)**



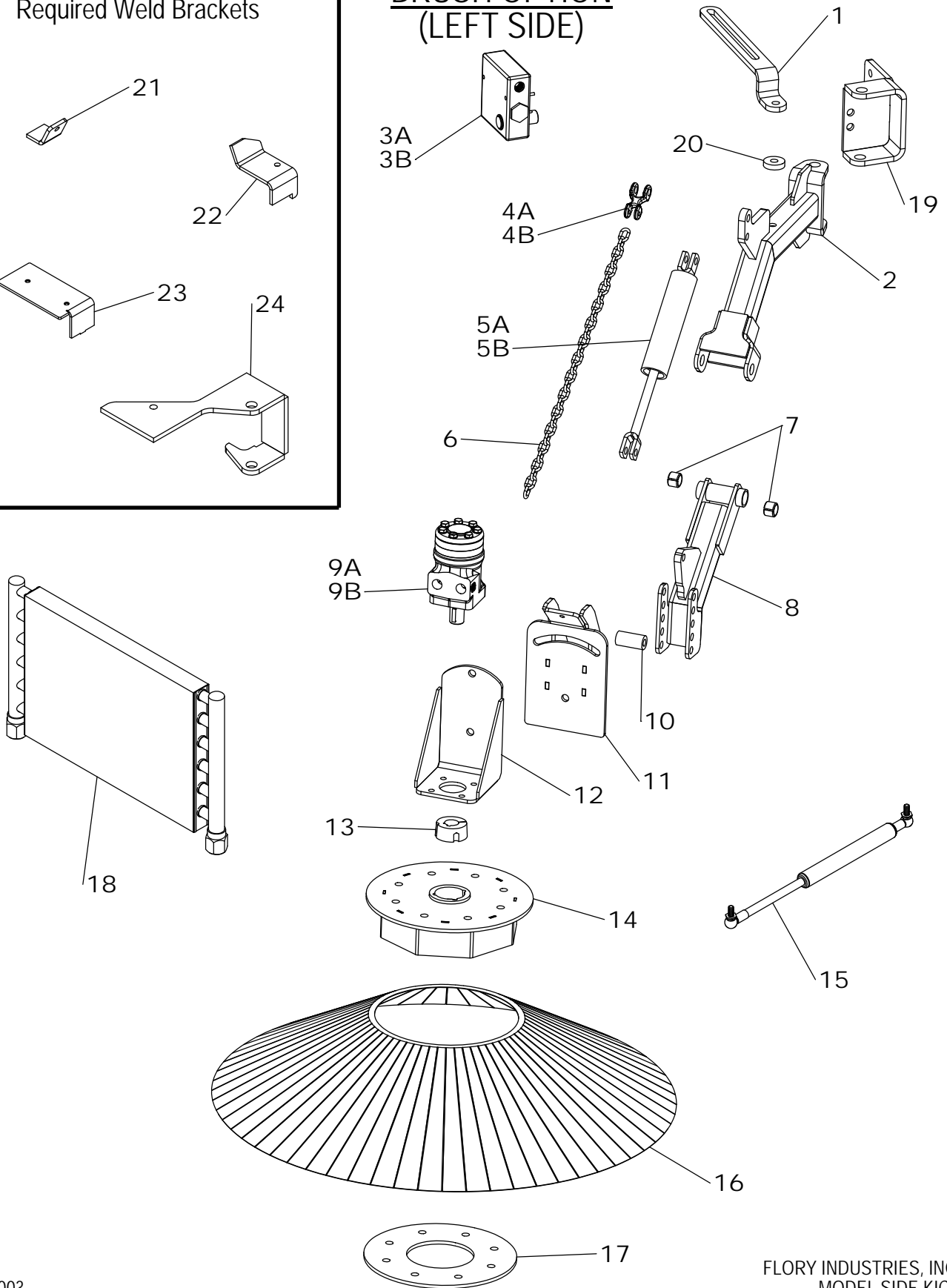
REF.

NO.	PART NO.	DESCRIPTION	QTY.
1	T69837	BRACKET, adjustment	1
2	T69717	ARM, swing (36" brush)	1
	T69787	ARM, swing (46" brush)	1
3A	RDRS195016P	VALVE, flow control	1
3B	MK2190	KIT, seal	1
4A	PN4055	CLEVIS, double	1
4B	87462	PIN, clevis	2
5A	WFC1504	CYLINDER, hydraulic	1
5B	LD108RK	SEAL KIT, cylinder	1
6	CH2024	CHAIN, 2/0	1
7	BU3091	BUSHING, tension	2
8	T69727-R1	ARM, lift	1
9A	HM1191	MOTOR, hydraulic	1
9B	HM2149-K	KIT, seal	1
10	C1906	SPACER	1
11	T69737	BRACKET, pitch	1
12	T69747	MOUNT, motor	1
13	1610100	BUSHING	1
14	T69757	PLATE, brush mount (top)	1
15	SG4018	SPRING, gas	1
16	BH1036	BRUSH, 36"	4
	BH1046	BRUSH, 46"	4
17	T69767	PLATE, brush mount (bottom)	1
18*	OC1234	COOLER, oil (77/78 Series s/n 3786~)	1
19	T69843	BRACKET, brush arm attachment (s/n 4365~)	1
20	T19107	SPACER, brush arm adjuster (s/n 4365~)	1
(*) NOTE: This oil cooler is required on all 77 series machines that are using a side kick & a brush attachment. The oil cooler is standard on 78 series.			
Required Weld Brackets			
(77/78 Series S/N ~3880)(56 Series S/N ~3911)			
21	T606XX-023	MOUNT, gas spring (77/78 QTY. - *1) (56 QTY. - *2)	*
22	WT69027	MOUNT, gas spring	1
23	T606XX-001	MOUNT, flow control	1
24	WT69017	BRACKET, brush attachment	1
	2103-8-8	ADAPTER, hyd	3
	0103-8-8	ADAPTER, hyd	1
	393T-8-8	ADAPTER, hyd	1
	PD38BTX	ADAPTER, test	1
	013T-8-8	ADAPTER, hyd	1

77/78 series S/N ~ 3880
 56 series S/N ~ 3911
 Required Weld Brackets



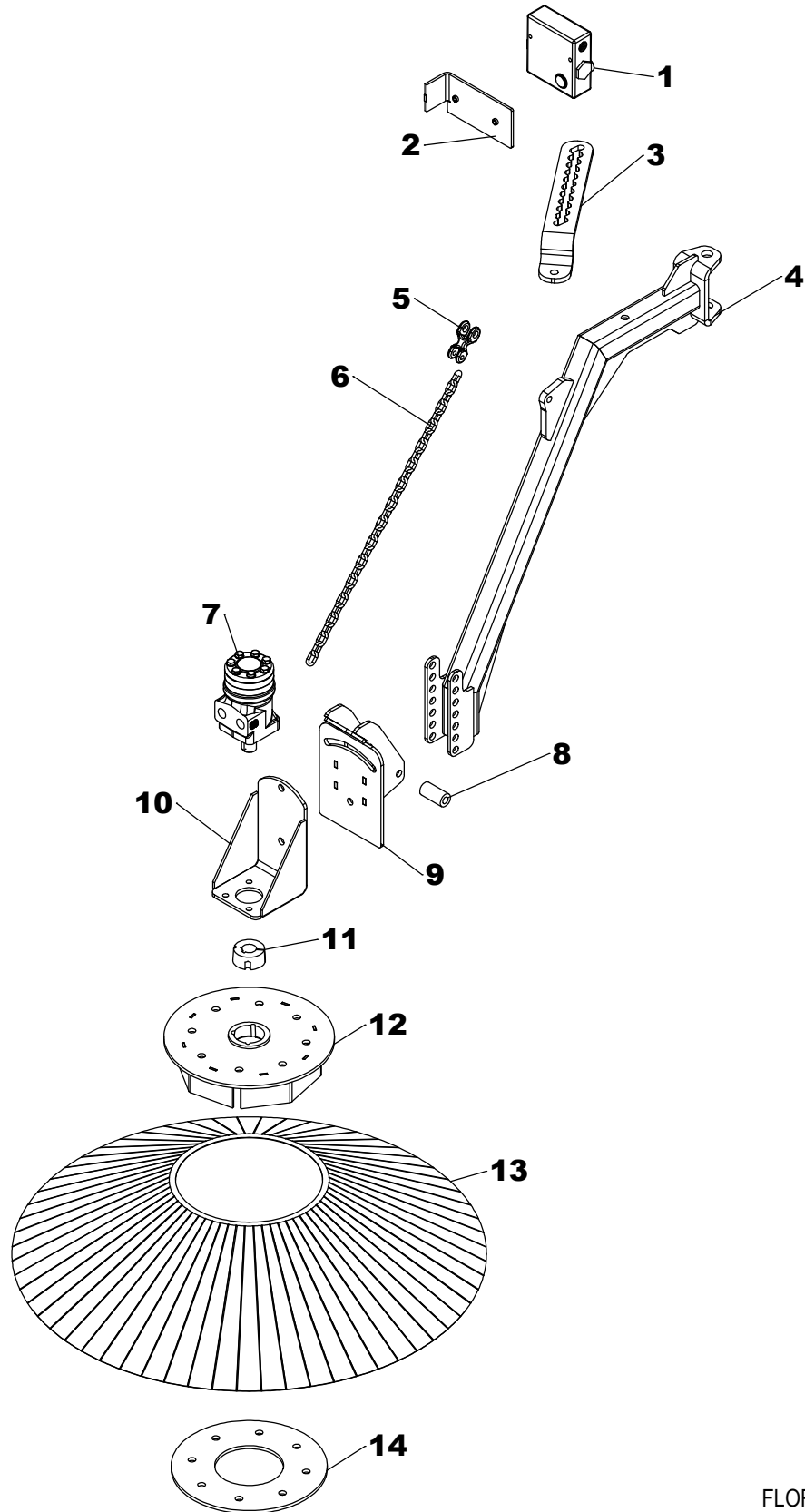
**SWEeper HEAD
 BRUSH OPTION
 (LEFT SIDE)**



REF.

NO.	PART NO.	DESCRIPTION	QTY.
	063T-6-6	ADAPTER, hyd	2
	2103-4-4	ADAPTER, hyd	2
	3/4 X 5-C	USS BOLT	1
	3/4 X 2-C	USS BOLT	2
	1/2 X 3-1/2-C	USS BOLT	9
	1/2 X 1-1/2-C	USS BOLT	5
	5/16 X 1-C	USS BOLT	1
	1/4 X 2-1/2-C	USS BOLT	2
	3/4FW-C	USS FLATWASHER	6
	1/2FW-C	USS FLATWASHER	6
	5/16FW-C	USS FLATWASHER	1
	1/4LW-C	USS LOCKWASHER	2
	3/4LN-C	USS LOCKNUT	3
	1/2LN-C	USS LOCKNUT	14
	5/16LN-C	USS LOCKNUT	1
NOTE: See left side brush hydraulic schematic for hose detail.			

SWEeper HEAD
BRUSH OPTION (PECAN)
(LEFT SIDE)



R08PB004

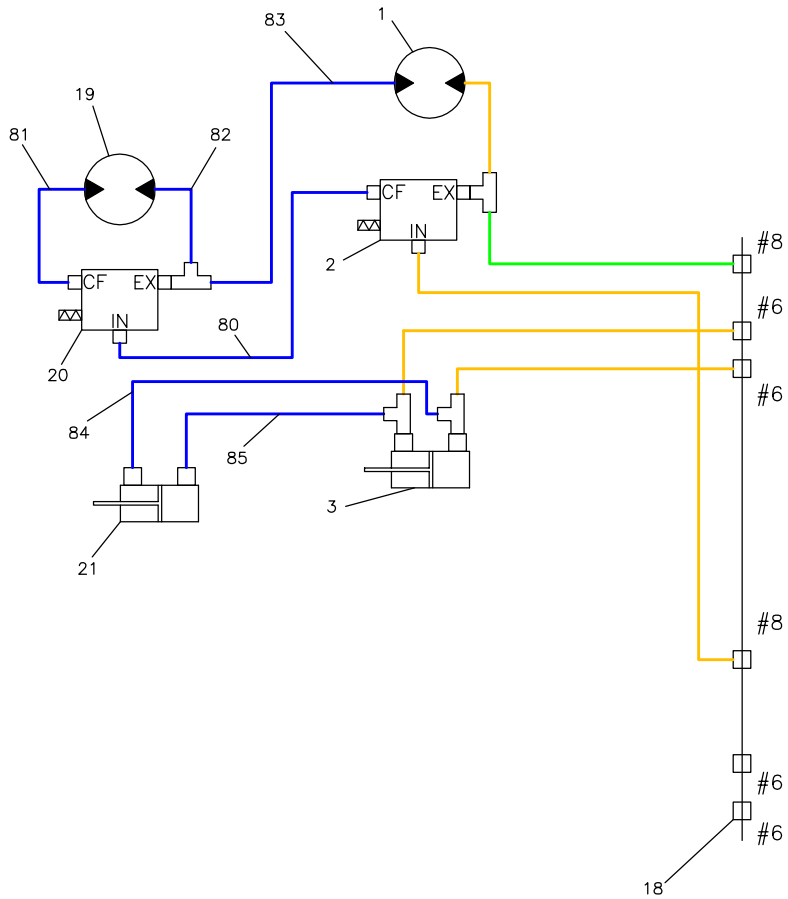
FLORY INDUSTRIES, INC.
MODEL 78 PECAN

REF.

NO.	PART NO.	DESCRIPTION	QTY.
1A	RDRS195016P	VALVE, flow control	1
1B	MK2190	KIT, seal	1
2	T636X7-063	MOUNT, flow control (required weld on, sn ~ 5603)	1
3	T69837	BRACKET, adjustment	1
4	T69823	ARM, swing	1
5A	PN4055	CLEVIS, double	1
5B	87462	PIN, clevis	1
6	CH2024	CHAIN, 2/0	1
7A	HM1191	MOTOR, hydraulic	1
7B	HM2149-K	KIT, seal	1
8	C1906	SPACER	1
9	T69737	BRACKET, pitch	1
10	T69747	MOUNT, motor	1
11	1610100	BUSHING	1
12	T69757	PLATE, brush mount (top)	1
13A	BH1036	BRUSH, 36"	4
13B	BH1046	BRUSH, 46"	4
14	T69767	PLATE, brush mount (bottom)	1
	1/4 X1-C	USS BOLT	1
	1/4 X 2-1/2-C	USS BOLT	2
	3/8X1-C	USS BOLT	4
	1/2 X 1-1/2-C	USS BOLT	3
	1/2 X 3-C	USS BOLT	1
	1/2 X 3-1/2-C	USS BOLT	9
	5/8 X 2-C	USS BOLT	2
	1/4FW-C	USS FLATWASHER	1
	1/2FW-C	USS FLATWASHER	13
	1/4LW-C	USS LOCKWASHER	2
	3/8LW-C	USS LOCKWASHER	4
	1/4LN-C	USS LOCKNUT	1
	1/2LN-C	USS LOCKNUT	13
	5/8LN-C	USS LOCKNUT	2
NOTE: See left side brush hydraulic schematic for hose detail.			

PRODUCTION (S/N. 3796 ~ 3880)

78 SERIES
HYDRAULIC SCHEMATIC
BRUSH ATTACHMENT
(LEFT SIDE)



COMPONENTS

- 1 = Reel motor (15.2 CIR)
- 2 = Flow control
- 3 = Head lift cyl.

- 20 = Brush flow control
- 21 = Brush lift cylinder

- 18 = Bulk head fittings and sizes
- 19 = Brush motor (11.91 CIR)

PRESSURE SETTINGS

CIRCUIT LEGEND

- RETURN
- AUXILIARY
- BRUSH ATTACHMENT

REVISION RECORD

Added brush attachment 1/28/09 SR	Corrected propulsion hose routing. 1/20/14 BE
--------------------------------------	--

DWN BY: SR

DATE: 9/17/07

FILE NAME: S1201014

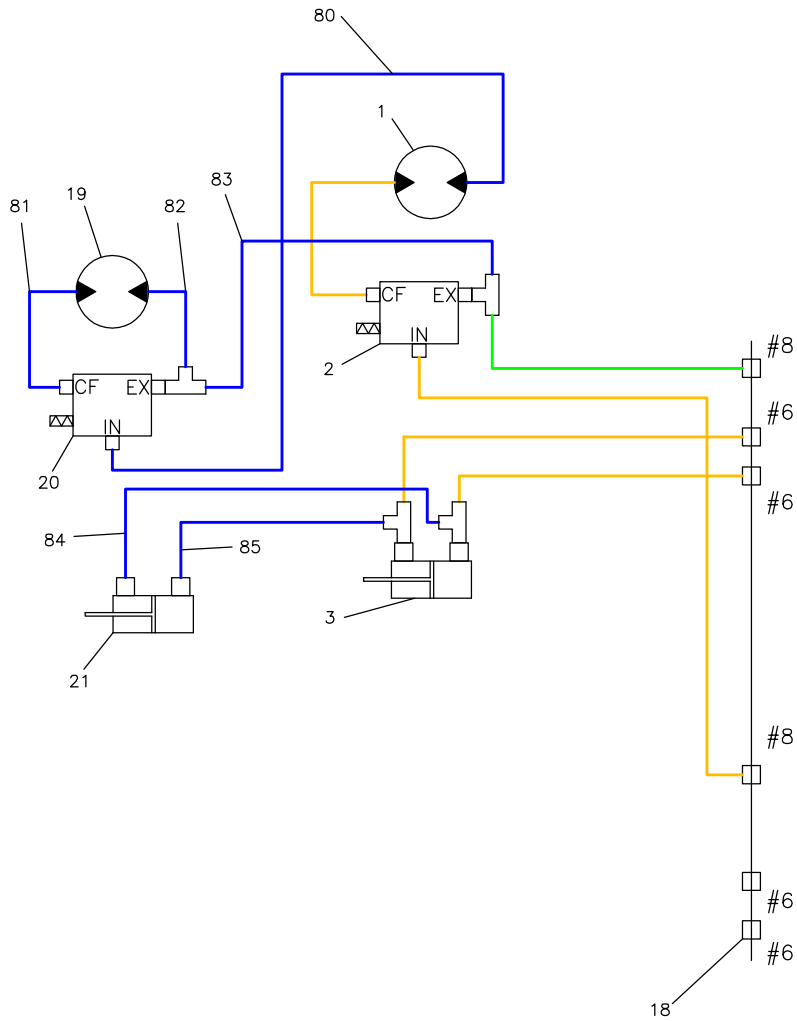
FLORY
INDUSTRIES

REF.

NO.	PART NO.	DESCRIPTION	QTY.
19	HM1191	MOTOR, hydraulic	1
	HM2149-K	KIT, seal	1
20	RDRS195016P	VALVE, flow control	1
	MK2190	KIT, seal	1
21	WFC1504	CYLINDER, hydraulic	1
	LD108RK	SEAL KIT, cylinder	1
80		HOSE, pri. reel flow ctrl 'CF' to brush flow ctrl 'IN'	1
81		HOSE, brush flow ctrl 'CF' to brush motor Rt. port	1
82		HOSE, brush motor Lt. port to brush flow ctrl 'EX'	1
83		HOSE, brush flow ctrl 'EX' tee to pri reel motor Lt. port	1
84		HOSE, head lift cyl. Base tee to brush lift cyl. Rod end	1
85		HOSE, brush lift cyl. Base end to hd lift cyl. Rod end tee	1

PRODUCTION (S/N. 4255~5353)

78 SERIES
HYDRAULIC SCHEMATIC
REEL FRAME BRUSH
(LEFT SIDE)



COMPONENTS

- | | | | | |
|---------------------------|------------------------|------------------------|-----------------------------------|--------------------------|
| 1 = Reel motor (15.2 CIR) | 6 = See standard sch. | 11 = See standard sch. | 16 = See standard sch. | 21 = Brush lift cylinder |
| 2 = Flow control | 7 = See standard sch. | 12 = See standard sch. | 17 = See standard sch. | |
| 3 = Head lift cyl. | 8 = See standard sch. | 13 = See standard sch. | 18 = Bulk head fittings and sizes | |
| 4 = See standard sch. | 9 = See standard sch. | 14 = See standard sch. | 19 = Brush motor (11.91 CIR) | |
| 5 = See standard sch. | 10 = See standard sch. | 15 = See standard sch. | 20 = Brush flow control | |

PRESSURE SETTINGS

2 = Flow Control relief-1500 PSI

CIRCUIT LEGEND

— BRUSH ATTACHMENT

REVISION RECORD

DWN BY: SR

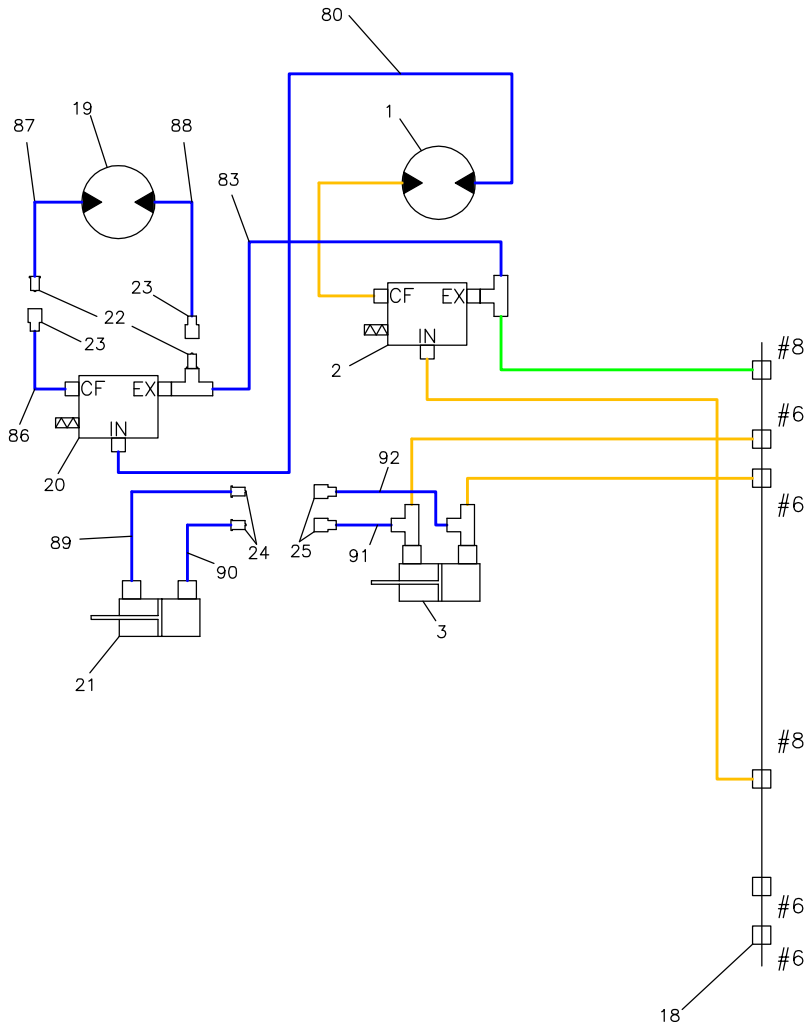
DATE: 8/1/11

FILE NAME: S1201015

**FLORY
INDUSTRIES**

PRODUCTION (S/N. 5359~)

78 SERIES
HYDRAULIC SCHEMATIC
REEL FRAME BRUSH
 (LEFT SIDE)



COMPONENTS

- | | | | | |
|---------------------------|------------------------|------------------------|-----------------------------------|--------------------------|
| 1 = Reel motor (15.2 CIR) | 6 = See standard sch. | 11 = See standard sch. | 16 = See standard sch. | 21 = Brush lift cylinder |
| 2 = Flow control | 7 = See standard sch. | 12 = See standard sch. | 17 = See standard sch. | |
| 3 = Head lift cyl. | 8 = See standard sch. | 13 = See standard sch. | 18 = Bulk head fittings and sizes | |
| 4 = See standard sch. | 9 = See standard sch. | 14 = See standard sch. | 19 = Brush motor (11.91 CIR) | |
| 5 = See standard sch. | 10 = See standard sch. | 15 = See standard sch. | 20 = Brush flow control | |

PRESSURE SETTINGS

2 = Flow Control relief-1500 PSI

CIRCUIT LEGEND

— BRUSH ATTACHMENT

REVISION RECORD

DWN BY: KM

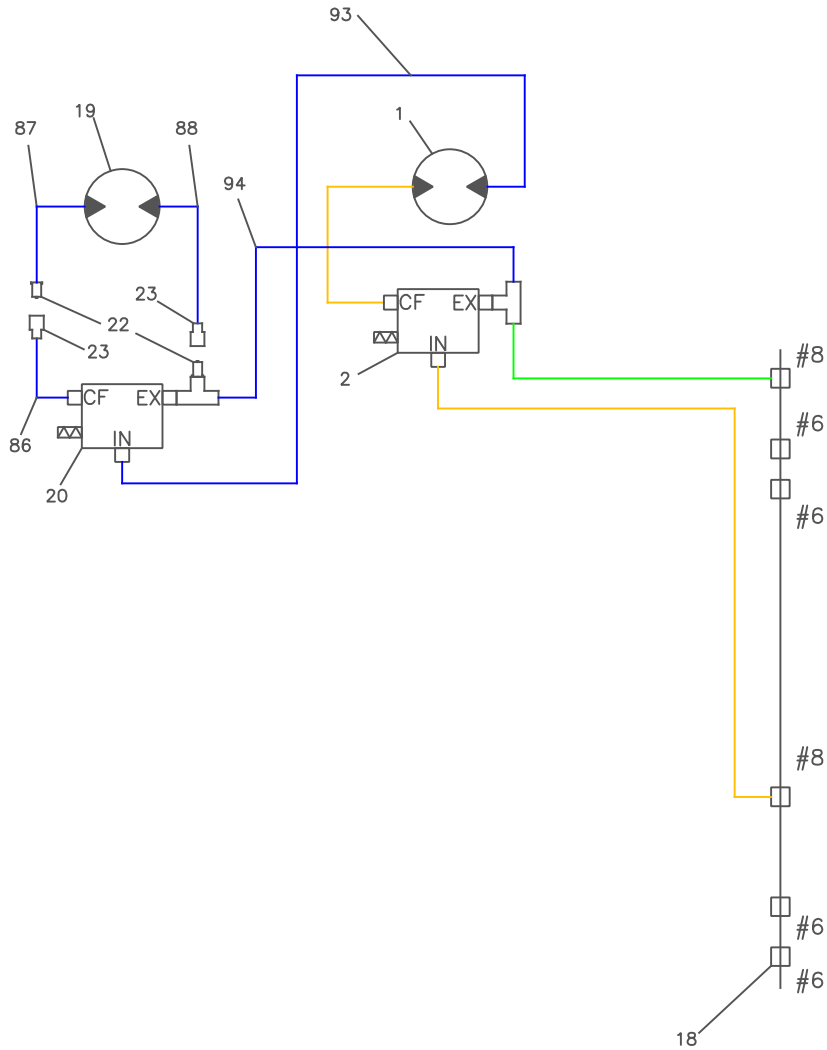
DATE: 12/2/15

FILE NAME: S1201016

FLORY
INDUSTRIES

PRODUCTION (S/N. 5359~)

78 SERIES
HYDRAULIC SCHEMATIC
PECAN REEL FRAME BRUSH
(LEFT SIDE)



COMPONENTS

- | | | | | |
|---------------------------|------------------------|------------------------|-----------------------------------|--------------------------|
| 1 = Reel motor (15.2 CIR) | 6 = See standard sch. | 11 = See standard sch. | 16 = See standard sch. | 21 = Brush lift cylinder |
| 2 = Flow control | 7 = See standard sch. | 12 = See standard sch. | 17 = See standard sch. | |
| 3 = Head lift cyl. | 8 = See standard sch. | 13 = See standard sch. | 18 = Bulk head fittings and sizes | |
| 4 = See standard sch. | 9 = See standard sch. | 14 = See standard sch. | 19 = Brush motor (11.91 CIR) | |
| 5 = See standard sch. | 10 = See standard sch. | 15 = See standard sch. | 20 = Brush flow control | |

PRESSURE SETTINGS

2 = Flow Control relief-1500 PSI

CIRCUIT LEGEND

— BRUSH ATTACHMENT

REVISION RECORD

DWN BY: KM

DATE: 3/8/17

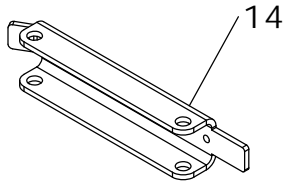
FILE NAME: S1201017

**FLORY
INDUSTRIES**

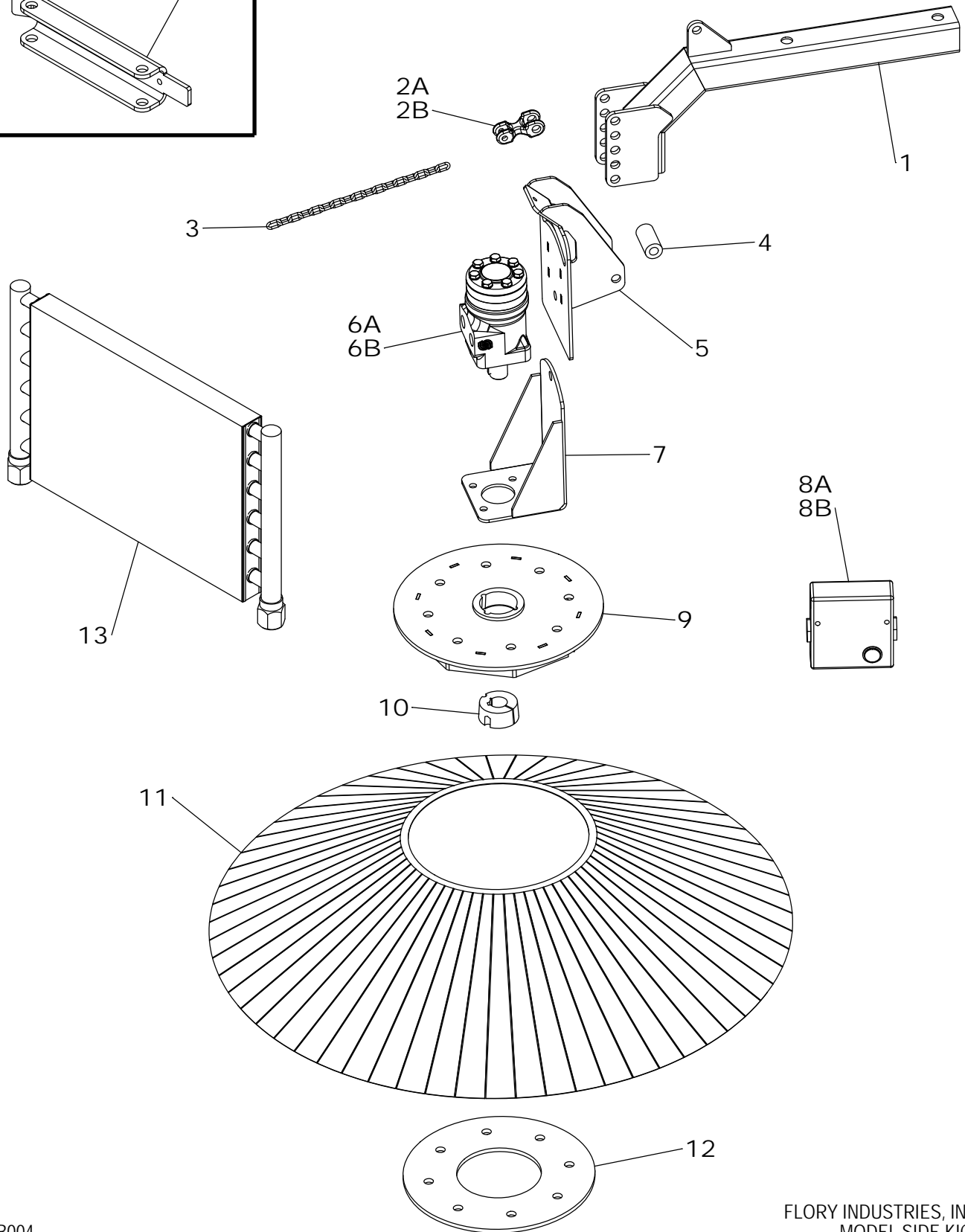
REF.

NO.	PART NO.	DESCRIPTION	QTY.
19	HM1191	MOTOR, hydraulic	1
	HM2149-K	KIT, seal	1
20	RDRS195016P	VALVE, flow control	1
	MK2190	KIT, seal	1
21	WFC1504	CYLINDER, hydraulic	1
	LD108RK	SEAL KIT, cylinder	1
22	H4-63	QUICK COUPLER, 1/2 male	2
23	H4-62	QUICK COUPLER, 1/2 female	2
24	H3-63	QUICK COUPLER, 3/8 male	2
25	H3-62	QUICK COUPLER, 3/8 female	2
80		HOSE, pri. reel motor rt. port to brush flow ctrl 'IN'	1
81		HOSE, brush flow ctrl 'CF' to brush motor Rt. port	1
82		HOSE, brush motor Lt. port to brush flow ctrl 'EX'	1
83		HOSE, brush flow ctrl 'EX' tee to pri flow ctrl. 'EX'	1
84		HOSE, head lift cyl. Base tee to brush lift cyl. Rod end	1
85		HOSE, brush lift cyl. Base end to hd lift cyl. Rod end tee	1
86		HOSE, F/C "CF" port to male quick connect	1
87		HOSE, brush motor right port to female quick connect	1
88		HOSE, brush motor left port to brush F/C "EX" tee	1
89		HOSE, brush lift cyl. rod end to female quick connect	1
90		HOSE, brush lift cyl. base end to female quick connect	1
91		HOSE, head lift cyl. rod end tee to male quick connect	1
92		HOSE, head lift cyl. base end tee to male quick connect	1
93		HOSE, pri. reel motor rt. port to brush flow ctrl 'IN' (PECAN)	1
94		HOSE, brush flow ctrl 'CF' to brush motor Rt. Port (PECAN)	1

SIDE KICK (mfg.# ~897)
Required Weld Bracket



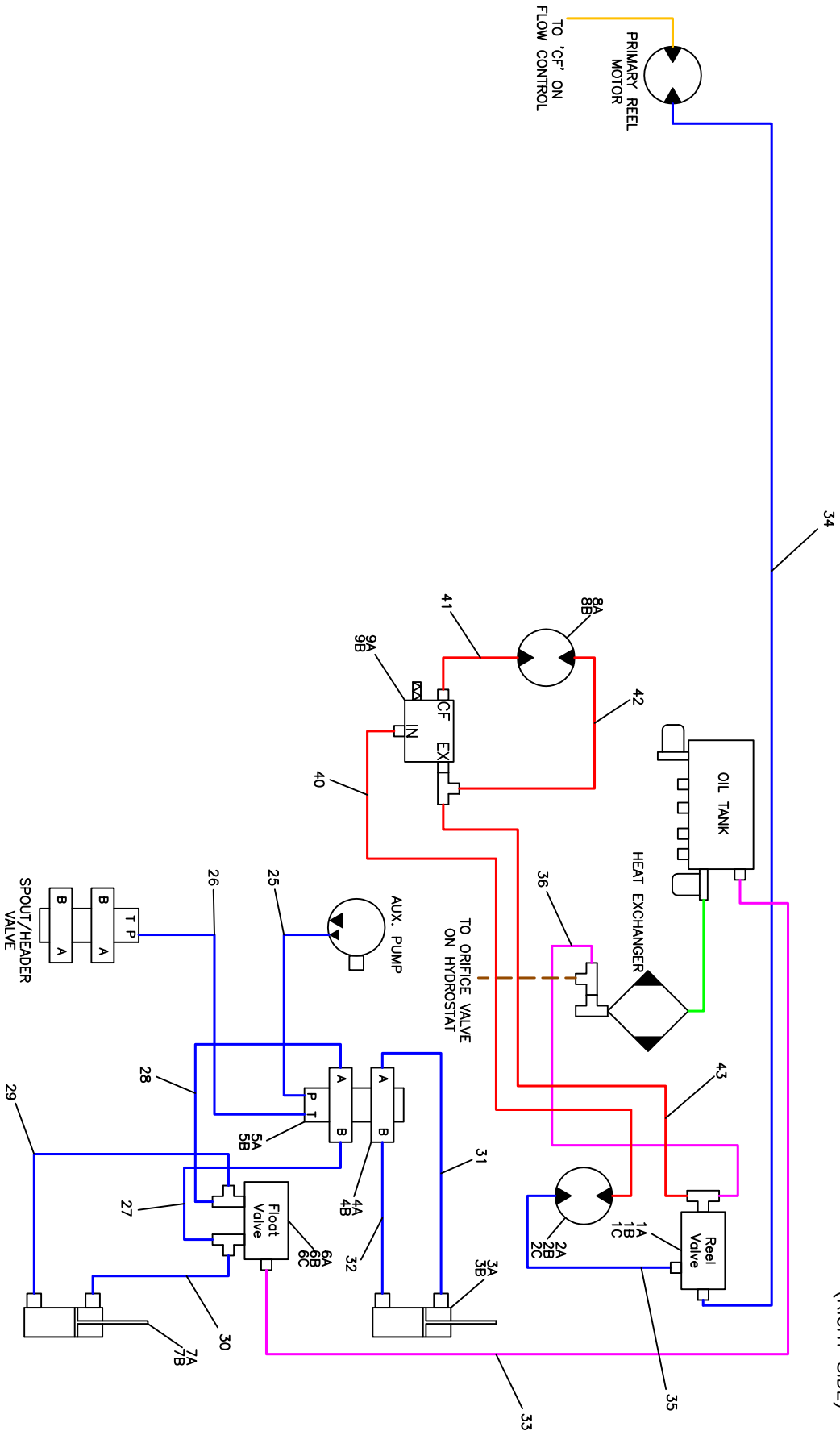
SIDE KICK
BRUSH OPTION
(RIGHT SIDE)



REF.

NO.	PART NO.	DESCRIPTION	QTY.
1	T69817	ARM, brush	1
2A	PN4055	CLEVIS, double	1
2B	87462	PIN, clevis	2
3	CH2012	CHAIN, 2/0	1
4	C1906	SPACER	1
5	T69737	BRACKET, pitch	1
6A	HM1191	MOTOR, hydraulic	1
6B	HM2149-K	KIT, seal	1
7	T69747	MOUNT, motor	1
8A	RDRS195016P	VALVE, flow control	1
8B	MK2190	KIT, seal	1
9	T69827	PLATE, brush mount (top)	1
10	1610100	BUSHING	1
11	BH1036	BRUSH	2
12	T69767	PLATE, brush mount (bottom)	1
13*	OC1234	COOLER, oil (77/78 Series s/n 3786~)	1
(*) NOTE: This oil cooler is required on all 77 series machines that are using a side kick & a brush attachment. The oil cooler is standard on 78 series.			
14	T69777-027	MOUNT, welded (mfg# ~987)	1
	2103-8-8	ADAPTER, hyd	4
	393T-8-8	ADAPTER, hyd	1
	PD38BTX	ADAPTER, test	1
	013T-8-8	ADAPTER, hyd	1
	5/8 X 4-C	USS BOLT	2
	1/2 X 3-C	USS BOLT	8
	1/2 X 1-C	USS BOLT	2
	1/4 X 2-1/2-C	USS BOLT	2
	1/2LN-C	USS LOCKNUT	13
	1/4 X 5-C	USS BOLT	2
	3/8 X 1-C	USS BOLT	4
	1/4LN-C	USS LOCKNUT	1
	3/8LW-C	USS LOCKWASHER	4
	1/2 X 4-C	USS BOLT	1
	1/4FW-C	USS FLATWASHER	2
	1/4 X 1-C	USS BOLT	1
	1/2FW-C	USS FLATWASHER	6
	1/4LW-C	USS LOCKWASHER	2
	1/4N-C	USS NUT	2
NOTE: See right side brush hydraulic schematic for hose detail.			

SIDE KICK
HYDRAULIC SCHEMATIC
W/ BRUSH ATTACHMENT
(RIGHT SIDE)



COMPONENTS

- 1 = Reel Valve
- 2 = Reel Motor
- 3 = Lift Cylinder
- 4 = Directional Valve
- 5 = Manifold
- 6 = Float Valve
- 7 = Folding Cylinder
- 8 = Brush Motor
- 9 = Flow Control

CIRCUIT LEGEND

- STD SWEEPER AUX.
- STD. SWEEPER RETURN
- STD. SWEEPER CASE DRAIN
- SIDE KICK AUX.
- SIDE KICK RET.
- SIDE KICK RET.

REVISION RECORD

A	Added brush attachment option
B	
C	
D	

DWN BY: SR

6/13/08

FILE NAME: S12SC002

PRESSURE SETTINGS

SB = Hyd. Cylinder Relief - 1200 PSI

FLORY
INDUSTRIES

REF.

NO.	PART NO.	DESCRIPTION	QTY.
1A	VL5077	VALVE, reel	1
1B	MF7077	BODY, valve	1
1C	ME1777	COIL, 12v	1
2A	HM1152	MOTOR, reel	1
2B	HM1152-K	SEAL KIT, motor	1
2C	SF3152	SHAFT, motor	1
3A	HC2518	CYLINDER, lift	1
3B	1C4433	SEAL KIT, cylinder	1
4A	VL5090	VALVE, directional control	2
4B	ME1260	COIL, valve	2
5A	MF7090	MANIFOLD	1
5B	VL7090	VALVE, relief	1
6A	VL5177	VALVE, float	1
6B	MF7177	BODY, line	1
6C	ME1877	COIL, 12v	1
7A	HC2522	CYLINDER, folding	1
7B	1C4433	SEAL KIT, cylinder	1
8A	HM1191	MOTOR, hydraulic	1
8B	HM2149-K	KIT, seal	1
9A	RDRS195016P	VALVE, flow control	1
9B	MK2190	KIT, seal	1
25		HOSE, aux. pump to cyl. valve port P	1
26		HOSE, cyl. valve port 'T' to original hose	1
27		HOSE, cyl. valve top 'B' port to float valve port #4 tee	1
28		HOSE, cyl. valve top 'A' port to float valve port #2 tee	1
29		HOSE, float valve port #2 tee to folding cyl. base end	1
30		HOSE, float valve port #4 tee to folding cyl. rod end	1
31		HOSE, cyl. valve bott. 'B' port to lift cyl. base end	1
32		HOSE, cyl. valve top 'A' port to lift cyl. rod end	1
33		HOSE, float valve port #1 to tank	1
34		HOSE, main reel drive motor right port to reel drive valve port #2	1
35		HOSE, reel drive port #3 to reel motor Lt port.	1
36		HOSE, reel drive valve port #2 to heat exchanger tee	1
40		HOSE, reel motor Rt port to flow control IN port	1
41		HOSE, Flow control CF port to brush motor Lt. port	1
42		HOSE, Brush motor Rt port to flow control EX port	1
43		HOSE, Flow control EX port to reel drive valve port #2 tee	1