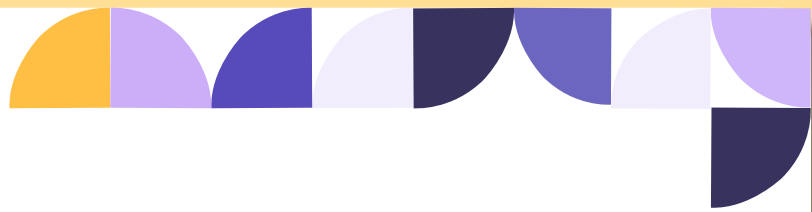


spring into summer





A Glance into Ignition

From a desk in a shared office space to now one of the market leaders in the corporate gifting and branding space in South Africa. It's taken over 20 years to get us here and we are **exceptionally grateful for what we have achieved, the partnerships we have created and the value we have added.**

Our attention to detail and our excellent service have ensured that we are **one of South Africa's top branded products, gifts and clothing companies.** We work hand in hand with our clients, striving to meet objectives and budgets.

We are passionate about keeping abreast of the latest trends and offering innovative, bespoke concepts and ideas as well as OEM and custom manufactured products.

Who we are



Over **20 years experience** in the branded products, gifts and clothing industry.



Best Industry pricing working with top local and international suppliers and manufacturers.



We are a proud **B-BBEE Level 1** contributor.



National Footprint. Offices in Johannesburg, Cape Town and Durban.



Access to **over 80 000 items.** You name it we can brand it!



Experts in special imports, end to end solution covering the entire supply chain process.



Access to a **specialised team** of Strategy Marketers, Design, Content, PR, Digital Advertising and Brand.



Integrated Marketing Communication Experts working with top local and international clients and partners.

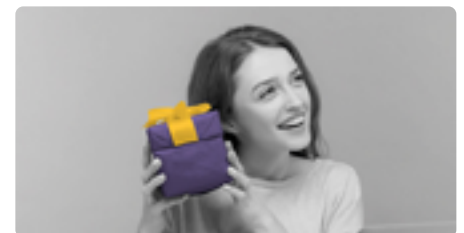
What we do



Clothing and Headwear



Outdoor and Indoor Display



Promotional Gifts



Eco Range



Outdoor and Leisure



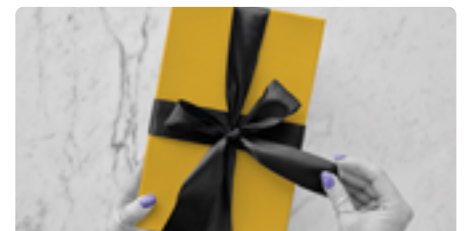
Office and Stationery



Technology



PPE & Covid



iSwag

Where we're based ○○



What we care about ○○



Recycling



Say No to Plastic



Eco-friendly
Alternatives



Reducing our
Carbon Footprint



Education

Our partners ○○

Here are a few of the thousands of brands we work with across multiple industries.



Investec

Deloitte

STANLIB

FOOTGEAR FG

HERBALIFE
NUTRITION



PUMA



TOYOTA



SA Home Loans



BURGER
KING



Stellenbosch
UNIVERSITY OF
WINTERBOSCH
UNIVERSITEIT



94.2
jacarandafm
more music you love



CHAS EVERITT
INTERNATIONAL PROPERTY GROUP



BOSCH
Invented for life

iStore

Volkswagen
Financial Services



Ignition Marketing

www.ignitionmarketing.co.za

GP: 010 593 6400 | WC: 021 286 9460 | KZN: 032 586 0741

OR contact your Account Manager

SCAN HERE to find out more about **Ignition** or drop us a mail on info@ignitionmarketing.co.za



Browse our top summer collection of the hottest branded products for this season.

*You name it,
we can brand it.*



SUMMER ESSENTIALS

GET OUTSIDE &
GO OFFLINE



BRAAIWARE | COOLER BAGS
DRINKWARE | KITCHENWARE | ACCESSORIES

KEEP COOL THIS
SUMMER SEASON



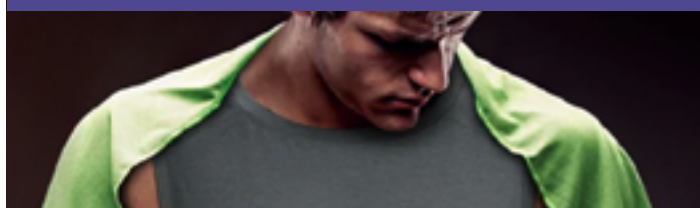
CLOTHING
HEADWEAR

LIFE'S A BEACH
RIDE THE WAVE



HEADWEAR | BEACH ACCESSORIES
DRINKWARE | BAGS

KEEP FIT & HEALTHY
THIS SUMMER



ACTIVE WEAR | SPORTSWEAR
ACCESSORIES

SUMMER'S HOTTEST ESSENTIALS: GET OUTSIDE & GO OFFLINE



“

A TWO IN ONE GIFT
FOR THE SUMMER
MONTHS.

”

Portable Braai & Cooler

Braai folds away
neatly in a carry bag.

Product Dimensions:
20cm (H) x 30cm (D)

*Various branding
options available.*

2

A braai and cooler
bag in one



Made from 600D
Nylon and metal



Adjustable
& removable
shoulder strap



SUMMER'S HOTTEST ESSENTIALS: GET OUTSIDE & GO OFFLINE



**Get creative
with an edge to
edge design**

“

**A STYLISH
SOLUTION TO KEEP
YOUR WINE COOL.**

”

Wine Insulating Carry Bag

Product Dimensions:
40cm (H) x 14cm (W)

*Includes full colour
sublimation (edge to
edge branding).*



Locally
manufactured



Keeps wine cold on
the move



Thick neoprene
insulating wine bag
with carry handle



SUMMER'S HOTTEST ESSENTIALS: GET OUTSIDE & GO OFFLINE



**Get creative
with an edge to
edge design**

“

**KEEPS WINE COOL
ON THE GO.**

”

Double Wine Insulating Carry Bag

Product Dimensions:
40cm (H) x 27cm (W)

*Includes full colour
sublimation (edge to
edge branding).*



Locally
manufactured



Keeps 2 bottles of wine
cold while on the move



Thick neoprene
insulating wine bag
with carry handle



SUMMER'S HOTTEST ESSENTIALS: GET OUTSIDE & GO OFFLINE



“

**STAY HYDRATED
IN STYLE.**

”

500ml Double-Wall Water Bottle

Product Dimensions:
25.2cm (H)

*Various branding
options available.*



Double-wall
stainless steel
bottle



Twist lid with a 500ml
capacity



Keeps liquid hot and cold



SUMMER'S HOTTEST ESSENTIALS: GET OUTSIDE & GO OFFLINE



“ THE PERFECT TRAVEL COMPANION. ”

Backseat Cooler & Organiser

Made from superior polycanvas. Great for organising all your travel goodies.

Product Dimensions:
27.5cm (W) x 12.5cm (D) x 37cm (H)

Various branding options available.



Features a thick aluminium foil lining



Includes a cooler compartment & multiple pockets



Rests smoothly on the backseat of your car



SUMMER'S HOTTEST ESSENTIALS: GET OUTSIDE & GO OFFLINE



Get creative
with an edge to
edge design



“
A CONVENIENT AND
EASY TO CARRY
COOLER BAG.
”

Neoprene Lunch Bag

Product Dimensions:
33cm (H) x 28cm (W)

*Includes full colour
sublimation (edge to
edge branding).*



Locally
manufactured



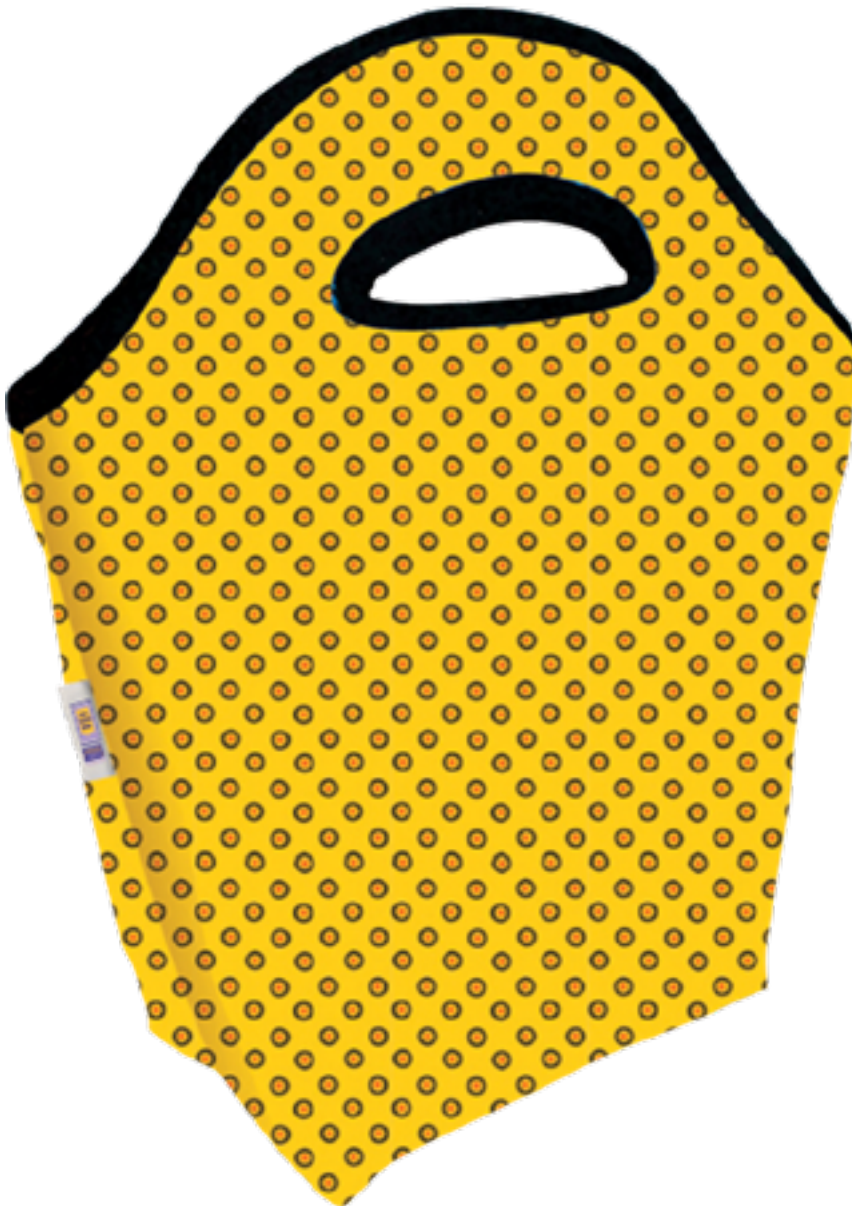
Keeps the contents
fresh for hours



Thick neoprene
insulating lunch bag



SUMMER'S HOTTEST ESSENTIALS: GET OUTSIDE & GO OFFLINE



“
A CONVENIENT AND
EASY TO CARRY
COOLER BAG.
”

Shweshwe Lunch Bag With Branded Tag

Choose from
a selection of
shweshwe prints.

Product Dimensions:
33cm (H) x 28cm (W)

Includes printed tag.



Locally
manufactured



Keeps the contents
fresh for hours



Thick neoprene
insulating lunch bag



SUMMER'S HOTTEST ESSENTIALS: GET OUTSIDE & GO OFFLINE

Get creative
with an edge to
edge design



Select your Colour Binding



“

**GREAT EXPOSURE
FOR YOUR BRAND.**

”

Windscreen Visor

Product Dimensions:
142cm (W) x 68cm (H)

*Includes full colour
sublimation (edge to
edge branding).*



Locally
manufactured



Protects your dashboard
from direct sunlight &
harmful UV rays



Made from 210
denier polyester



SUMMER'S HOTTEST ESSENTIALS: GET OUTSIDE & GO OFFLINE



“ A VERY
CONVENIENT AND
STYLISH COOLER
FOR THOSE HOTTER
DAYS. ”

Basket Cooler

Handle for
easy storage or
transportation.

Front slip pocket with
enhanced stitching.

Product Dimensions:
45.7cm (W) x 25.4cm
(D) x 27.9cm (H)

*Various branding
options available.*



Collapsible metal
frame



A large main compartment
with zip offers ample space
(up to 30 cans)



Peva lining



SUMMER'S HOTTEST ESSENTIALS: GET OUTSIDE & GO OFFLINE



“ A GREAT GIFT FOR THE SOCIAL TYPE. ”

4 Person Wicker Picnic Basket

Includes four place settings with plates, cutlery, glasses, napkins & bottle opener.

Various branding options available.

x4

Includes four place settings



A dark brown wicker basket with 210 denier polyester lining



Product Dimensions:
44cm (W) x 25cm (H)
x 20cm (D)



SUMMER'S HOTTEST ESSENTIALS: GET OUTSIDE & GO OFFLINE



“ A TRENDY AND INNOVATIVE GIFT FOR THE FOODIE. ”

Movie Night Popcorn Popper

Colour: Black only

Product Dimensions:
20cm (L) x 20cm (W)
x 14cm (H)

Various branding options available.



Reusable, collapsible silicone popper



Makes popcorn within minutes



Dishwasher friendly



SUMMER'S HOTTEST ESSENTIALS: GET OUTSIDE & GO OFFLINE



“ THE PERFECT GIFT FOR THE BRAAIMASTER! ”

Braai Apron

Colour: Black only

The perfect opportunity to get your brand around the fire.

Product Dimensions:
81.7cm (L) X 61cm (W)

Various branding options available.



Includes an oven mitt and cloth



Made from real high quality fire resisting material



Includes a bottle opener



SUMMER'S HOTTEST ESSENTIALS: GET OUTSIDE & GO OFFLINE



**Get creative
with an edge to
edge design**

“

**THE IDEAL
GIFT FOR THE
CHEF OR BRAAI
MASTER!** ”

Fully Sublimated Baker Oven Gloves

Padded set of gloves to handle hot dishes.

Includes full colour sublimation (edge to edge branding).



Locally
manufactured



Made from 300 denier
polyester



A lightweight and
smooth finish



SUMMER'S HOTTEST ESSENTIALS: GET OUTSIDE & GO OFFLINE



**Get creative
with an edge to
edge design**

“

**KEEP YOUR
CHEFS HANDS
PROTECTED.**

”

Fully Sublimated Double Oven Glove

Handle hot pots and dishes with ease.

Includes full colour sublimation (edge to edge branding).



Locally
manufactured



Made from 300 denier
polyester



A lightweight and
smooth finish



SUMMER'S HOTTEST ESSENTIALS: GET OUTSIDE & GO OFFLINE



**Get creative
with an edge to
edge design**

“

**AN IDEAL
GIFT FOR THE
FOODIE.**

”

Fully Sublimated Kitchen Apron

Features a useful
front pocket.

Adjustable neck
and body ties for
optimum fit.

*Includes full colour
sublimation (edge to
edge branding).*



Locally
manufactured



Made from 300 denier
polyester



A lightweight and
smooth finish



SUMMER'S HOTTEST ESSENTIALS: GET OUTSIDE & GO OFFLINE



**Get creative
with an edge to
edge design**

“

**THE PERFECT
ADDITION TO
THE KITCHEN.**

”

Fully Sublimated Kitchen Towel

Absorbent and
durable.

*Includes full colour
sublimation (edge to
edge branding).*



Locally
manufactured



Made from 165gsm
towelling



Product Dimensions:
60cm (W) x 30cm (H)



SUMMER'S HOTTEST ESSENTIALS: GET OUTSIDE & GO OFFLINE



**Get creative
with an edge to
edge design**

“
**A LONG LASTING
BRANDED GIFT
FOR THE KITCHEN.**
”

Versatile Glass Chopping Board

A more hygienic non-porous surface.

Long lasting with no scratches or stains.

Includes full colour sublimation (edge to edge branding).



Locally
manufactured



Made from glass



Product Dimensions:
27.8cm (W) x 19.8cm (H)



SUMMER'S HOTTEST ESSENTIALS: GET OUTSIDE & GO OFFLINE



“
AN ECO-FRIENDLY
ALTERNATIVE FOR
THE FOODIE.
”

Recycled PET Apron

Made from recycled polyethylene terephthalate (PET) - empty PET packaging that has been collected and prepared for recycling.

Includes full colour sublimation (edge to edge branding).



Locally
manufactured



Made from recycled
polyethylene



Eco-friendly



SUMMER'S HOTTEST ESSENTIALS: GET OUTSIDE & GO OFFLINE



“ THE PERFECT
BRANDED UTENSIL
FOR THE FOODIE.
”

Chef Silicone Tongs

A multi-use cooking
and serving tong.

*Various branding
options available.*

x3

3 fun colours to
choose from: blue,
green, red



The tongs and handle are
coated with silicone and made
of steel giving it extra strength



Product Dimensions:
27.5cm (L) x 3cm (W)
X 4.5 cm (H)



SUMMER'S HOTTEST ESSENTIALS: KEEP COOL THIS SUMMER SEASON



“ KEEP COOL
IN STYLE!

”

Men's and Ladies Branded T-Shirt

Design your own t-shirt with a campaign specific message or let your brand stand out with your logo front and center.

Various branding options available .



Available in funky colours



Huge range of styles available



Top quality fabrics



SUMMER'S HOTTEST ESSENTIALS: KEEP COOL THIS SUMMER SEASON

“KEEP COOL
AND LOOK
SMART!”

Golf Shirts

Available in men's
and ladies.

Various styles and
colours available.

*Various branding
options available.*



Available in funky
colours



Three button placket



165g/m² 100% polyester,
single jersey knit



SUMMER'S HOTTEST ESSENTIALS: KEEP COOL THIS SUMMER SEASON



“ THE PERFECT
SUMMER
ACCESSORY!
”

6 Panel Cap

A huge range of styles
and caps available.

*Various branding
options available.*



Available in funky
colours



100% heavy
brushed cotton



255 g/m²



SUMMER'S HOTTEST ESSENTIALS: LIFE'S A BEACH RIDE THE WAVE



“

**THE PERFECT
SUMMER ECO
GIFT!**

”

Kooshty Slurp Straw Set

Available in a refreshing range of colours, this set is the perfect, sustainable alternative to single-use plastic straws.

Various branding options available on tube only.



Stainless steel & food-grade silicone



Eco-friendly



Product Dimensions:
Two Kooshty straws: 22cm (H)
Brush cleaner: 20cm (H)



SUMMER'S HOTTEST ESSENTIALS: LIFE'S A BEACH RIDE THE WAVE



“

**KEEP
HYDRATED AND
REFRESHED!**

”

Kooshty Swing Glass Water Bottle

For an appealing alternative to single-use plastic drinkware, consider this clean and fresh, reusable, and recyclable glass water bottle.

Various branding options available.



Glass & PP



Lid with finger loop with a 650ml capacity



Bottle not for hot liquids



SUMMER'S HOTTEST ESSENTIALS: LIFE'S A BEACH RIDE THE WAVE



“

**STAY HYDRATED
IN STYLE.**

”

Loop Glass Water Bottle

Enjoy the clean taste of drinking from a glass bottle, while avoiding those single-use plastic water bottles which are harming our planet.

Various branding options available.



Glass, stainless steel & silicone



Silicone carry loop with a 650ml capacity



Bottle not for hot liquids



SUMMER'S HOTTEST ESSENTIALS: LIFE'S A BEACH RIDE THE WAVE



“

**ADD SOME FUN
AND FLAVOUR!**

”

Infuser Bottle

The perfect Summer gift to stay hydrated. Enjoy the flavours and health benefits of added fruit in your drink.

Various branding options available.



AS & PP



750ml capacity



Product Dimensions:
26.5 cm (H)



SUMMER'S HOTTEST ESSENTIALS: LIFE'S A BEACH RIDE THE WAVE



“

ENJOY A
SMOOTHIE IN
STYLE!

”

Kooshty Kork Glass Smoothie Kup & Straw

You will love slurping
your favourite
smoothie from the
Kooshty Kork Glass
Smoothie Kup &
Straw!

*Various branding
options available.*



Borosilicate glass,
natural cork &
food-grade silicone



480ml capacity



Product Dimensions:
14.5 cm (H)



SUMMER'S HOTTEST ESSENTIALS: LIFE'S A BEACH RIDE THE WAVE

“ AN ESSENTIAL
ON-THE-GO
COOLER BAG!
”



Fully Sublimated 6 Can Cooler

Keep your lunch cool with this edge to edge branded cooler bag.

Various branding options available.



Locally
manufactured



210D Nylon with
aluminium foil



Quality foil lining to
keep food & drink cool



**Get creative
with an edge to
edge design**



SUMMER'S HOTTEST ESSENTIALS: LIFE'S A BEACH RIDE THE WAVE

Get creative
with an edge to
edge design



“

**SAY NO TO
PLASTIC!**

”

Fully Sublimated Shopper

The perfect reusable shopper bag. Great giveaway or goodie bag.

Includes full colour sublimation (edge to edge branding).



Locally
manufactured



210D Nylon



Product Dimensions:
43cm (H) x 36cm (w)



SUMMER'S HOTTEST ESSENTIALS: LIFE'S A BEACH RIDE THE WAVE



“ AN ENVIRONMENTALLY CONSCIOUS STATEMENT BAG. ”

Eco Jute Tote Bag

Includes a cotton front pocket - 18cm (H) x 21cm (W)

Two tone fabric contrast.

Various branding options available.



Features a button closure



Two tone colour contrast



Product Dimensions:
34cm (H) x 15cm (L) x
40cm (W)



SUMMER'S HOTTEST ESSENTIALS: LIFE'S A BEACH RIDE THE WAVE



“

THE PERFECT
EVERYDAY BAG.

”

Beach Rucksack

*Various branding
options available.*



Made of cotton &
lamine jute



Features a cross over
shoulder strap



Product Dimensions:
23cm (dia) x 45cm (H)



SUMMER'S HOTTEST ESSENTIALS: LIFE'S A BEACH RIDE THE WAVE



“

THE BEST BEACH
ACCESSORY.

”

Beach Tote

*Various branding
options available.*



Made of cotton &
laminated jute



Features a cotton cord
handle



Product Dimensions:
30cm (W) x 14.5cm (D) x
35cm (H)



SUMMER'S HOTTEST ESSENTIALS: LIFE'S A BEACH RIDE THE WAVE



“
THE PERFECT
BEACH
COMPANION.
”

Beach Bag

Available in orange, red, lime, black, blue.

Various branding options available.



Made from 600 denier polyester with lining



Includes a front pocket & inside zipper pocket



Product Dimensions:
43cm (W) x 34cm (L) x
16cm (D)



SUMMER'S HOTTEST ESSENTIALS: LIFE'S A BEACH RIDE THE WAVE



“ **MAKES AN
EXCELLENT GIFT
FOR THE SUMMER
MONTHS!** ”

Bamboo Sunglasses

The arms are made from natural bamboo.

Product Dimensions:
18cm (L) x 9.7cm (W)

*Various branding
options available.*



Made of wheat straw,
bamboo & 100%
cotton



Supplied in a 100%
cotton pouch



UV400 protection
lenses



SUMMER'S HOTTEST ESSENTIALS: LIFE'S A BEACH RIDE THE WAVE

“

STEP OUT IN
STYLE THIS
SUMMER.

”

Branded Sunglasses

*Various branding
options available.*



Available in funky
colours



Product Dimensions:
4.8cm (H) x 14.5cm (L)
x 5cm (W)



UV400 protection
lenses



SUMMER'S HOTTEST ESSENTIALS: LIFE'S A BEACH RIDE THE WAVE

Get creative
with an edge to
edge design



“THE PERFECT
STYLISH
SUMMER
ACCESSORY!”

Adult Reversible Hat

Reversible with
branding on both
sides.

*Includes full colour
sublimation (edge to
edge branding).*



Locally
manufactured



Made from 300 denier
polyester



Great for the
outdoors in the
hot weather



SUMMER'S HOTTEST ESSENTIALS: LIFE'S A BEACH RIDE THE WAVE

Quality
foil lining

Get creative
with an edge to
edge design



“
LONG LASTING
AND DURABLE
COOLER BAG
FOR ALL
OUTINGS. ”

Drawstring Cooler Bag

Can be used as an
over the shoulder
carry bag or as a
backpack.

*Includes full colour
sublimation (edge to
edge branding).*



Locally
manufactured



Quality foil lining to keep
food & drink cool



Thick neoprene
insulating
cooler bag with
drawstring



SUMMER'S HOTTEST ESSENTIALS: LIFE'S A BEACH RIDE THE WAVE

Get creative
with an edge to
edge design



“
A FUN AND
CONVENIENT
SUMMERY GIFT!
”

Full Colour Beach Towel

The perfect summery
soft towel.

*Includes full colour
sublimation (edge to
edge branding).*



Locally
manufactured



Product Dimensions:
90cm (W) x 175cm (L)



Made from 165gsm
towelling



SUMMER'S HOTTEST ESSENTIALS: LIFE'S A BEACH RIDE THE WAVE



“

FOR THOSE WHO
WANT TO HAVE
FUN OUTDOORS.

”

Frisbee

*Includes FREE one
colour screen printed
logo.*



Available in 9 vibrant
colours



Product Dimensions:
23cm (H)



Made from high quality
resistant plastic



SUMMER'S HOTTEST ESSENTIALS: LIFE'S A BEACH RIDE THE WAVE



“
PERFECT GIFT
FOR THE SPORTS
LOVERS!
”

Beach Bat & Ball

Includes FREE one colour screen printed logo on both bats.



Waterproof and sand resistant



Includes a small ball perfect for beach games



Plastic handle provides ultimate comfort



SUMMER'S HOTTEST ESSENTIALS: LIFE'S A BEACH RIDE THE WAVE

“ **GREAT PROTECTION FOR PICNICS OR AT THE BEACH.** ”

Sun Shelter

Packaged in a carry bag with handle.

Includes FREE one colour screen printed logo.



Includes ropes & pegs



Product Dimensions:
220cm (W) x 110cm (L)
x 110cm (D)



Made from 170T Polyester with fibre glass frame



SUMMER'S HOTTEST ESSENTIALS: LIFE'S A BEACH RIDE THE WAVE



“

**THE PERFECT
BEACH
ACCESSORY!**

”

Sandlite Sand-Free Beach Mat

Colour: Pink flamingo
pattern or green
triangle pattern

Product Dimensions:
1.55m (W) x 2m (L)



Delivers a complete sand
free experience



Folds easily into a
small bag to carry



Made from quick-dry and
lightweight material making
it extremely versatile



SUMMER'S HOTTEST ESSENTIALS: KEEP FIT & HEALTHY THIS SUMMER

Get creative
with an edge to
edge design



“

TAKE YOUR BRAND
ON AN ADVENTURE!

”

Gym Tote

Includes a main
compartment, sturdy
zip & carry handle.

Product Dimensions:
34.5cm (W) x 39cm (H)

*Includes full colour
sublimation (edge to
edge branding).*



Locally
manufactured



A lightweight and
smooth finish



Made from 300
denier polyester



SUMMER'S HOTTEST ESSENTIALS: KEEP FIT & HEALTHY THIS SUMMER

Get creative
with an edge to
edge design



“

THE BEST GIFT FOR
THE YOGA FANS.

”

Yoga Mat & Carry Bag

A durable yoga mat
with carry bag.

Product Dimensions:
Carry bag
70cm (H) x 25cm (W)

Yoga Mat
173cm (L) x 61cm (W)

*Includes full colour
sublimation (edge
to edge branding)
on both the bag and
yoga mat.*



Locally
manufactured



Includes a convenient
shoulder strap



Made from rubber
polyester & 210
denier polyester



SUMMER'S HOTTEST ESSENTIALS: KEEP FIT & HEALTHY THIS SUMMER



“

KEEP FIT THIS
SUMMER!

”

Fast-Foot Skipping Rope

Promote health and wellness with this branded skipping rope. Durable and lightweight.

Various branding options available.



PVC



Product Dimensions:
Skipping rope: 300 cm (L)
Handles: 2.54 cm (L)



SUMMER'S HOTTEST ESSENTIALS: KEEP FIT & HEALTHY THIS SUMMER



“

KEEP COOL WHILE
WORKING OUT.

”

Chill Cooling Sports Towel

Enjoy that feeling of instant cooling and freshness with this cooling towel that provides cool and comfortable relief for those sports enthusiasts who enjoy outdoor activities and working out.

Various branding options available.



Provides SPF 50 protection from the sun



Made from environmentally friendly breathable performance fabric



When wet, the fabric cools up to 15 degrees below outdoor ambient temperature



SUMMER'S HOTTEST ESSENTIALS: KEEP FIT & HEALTHY THIS SUMMER



“

STAY HEALTHY
THIS SUMMER!

”

Crave Food Capsule

Makes eating healthy
on the go so much
easier.
The perfect gift for
those wanting to be
healthy.

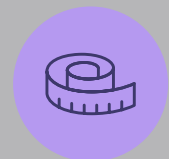
*Various branding
options available.*



Polypropylene



800ml capacity



Product Dimensions:
PP cup: 19.5 cm (H)
PP fork: 17.5 cm (L)



SUMMER'S HOTTEST ESSENTIALS: KEEP FIT & HEALTHY THIS SUMMER

“ A TRENDY
BOTTLE FOR
THE SPORTS
ENTHUSIASTS.
”

Protein Shaker Water Bottle

Plastic screw on lid.

Includes carry handle

*Various branding
options available.*



Capacity: 600ml



BPA Free & non-toxic



Product Dimensions:
19.5cm (H)



SUMMER'S HOTTEST ESSENTIALS: KEEP FIT & HEALTHY THIS SUMMER



“ A GREAT
ACCESSORY
FOR FITNESS IN
SUMMER!
”

Slazenger Wembley Gym Towel

A 100% cotton sports towel featuring a front pocket, and a length of 100cm.

Various branding options available.

%

100% Cotton

2

Two-tone zip on the front pocket



Product Dimensions:
100 cm (L) x 50 cm (W)



SUMMER'S HOTTEST ESSENTIALS: KEEP FIT & HEALTHY THIS SUMMER



“ GREAT FOR WEEKEND'S AWAY! ”

Gary Player Erinvale Duffel

Gary Player Collection signature lining & metal zip pullers.

Various branding options available.



Linen polyester
& 600D Nylon



Adjustable, padded, removable
shoulder strap



Product Dimensions:
47 cm (W) x 28 cm (D)
x 31 cm (H)



SUMMER'S HOTTEST ESSENTIALS: KEEP FIT & HEALTHY THIS SUMMER

Get creative
with an edge to
edge design



“

**GREAT
BRAND
EXPOSURE!**

”

Unisex Marathon Runners Vest

Get your brand in front of the crowds with this edge to edge branded vest.

Sizing available in Small to 5XL.

Includes full colour sublimation (edge to edge branding).



Locally
manufactured



Material: Birdseye



Lightweight



SUMMER'S HOTTEST ESSENTIALS: KEEP FIT & HEALTHY THIS SUMMER

Get creative
with an edge to
edge design



“
**BRAND
YOUR OWN
TOWEL!**
”

Gym Towel

A great branded gift for those staff, clients or suppliers that want to keep fit over Summer.

Includes full colour sublimation (edge to edge branding).



Locally
manufactured



165gsm Towelling



Product Dimensions:
30 cm (H) x 70 cm (W)



HAVEN'T FOUND WHAT YOU ARE LOOKING FOR?

**PLEASE CONTACT US AND WE WILL HAPPILY
HELP YOU FIND IT.**



LIFE'S A BEACH



Ignition Marketing

www.ignitionmarketing.co.za

GP: 010 593 6400 | WC: 021 286 9460 | KZN: 032 586 0741

OR contact your Account Manager