

EVERSOLO

Eversolo Audio Technology Co.,Ltd

# Innovative Streamer Beginning a New Epoch

The DMP-A6 is a high-end Hi-Fi all-in-one player. It is equipped with a quad-core high-performance CPU and a large memory, and it deeply researches and customizes an efficient and stable exclusive digital audio system for audio characteristics. It features dual ES9038Q2M professional DAC, supporting multiple digital and analog audio decoding outputs, and a user-friendly input and output interface. It is compatible with various music streaming services, online networks, push services, Bluetooth transmission, and offers a highly interactive local management software function, providing music enthusiasts with comprehensive functionality and Hi-Fi lossless audio.



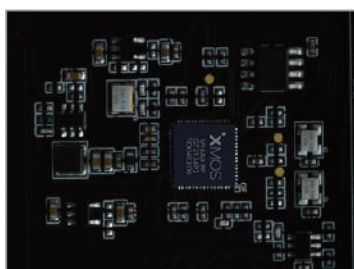
DMP-A6

## Specifications

- CPU: Quad-core ARM Cortex-A55
- Screen Display: 6-inch color LCD touchscreen
- Internal Storage: 4GB LPDDR4 + 32GB eMMC
- DAC Chip: ES9038Q2M\*2
- DAC Decoding: DSD512, PCM768KHz@32Bit MQA
- Audio Characteristics: THD+N: -120dB, SNR: 128dB, DNR: 128dB
- Audio Formats: DSD (.dsf/.dff/.iso/.dst), APE, FLAC, WAV, MQA, etc.
- Bluetooth Protocols: SBC/AAC/aptx/aptx LL/aptx HD/LDAC
- Storage Expansion: Built-in expandable storage M.2 NVME3.0 2280 SSD slot
- Control Methods: Mobile APP, touchscreen control
- Music Services: Roon Ready, Tidal Connect, Amazon Music, Qobuz, Highresaudio, Tidal;  
Supports streaming by DLNA



6-inch Color LCD  
Touchscreen



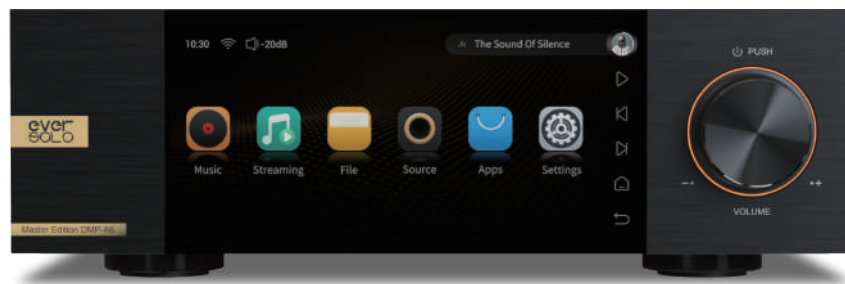
Low-jitter Dual-clock  
Processing



Rich Input and  
Output Ports

# Master-level Streamer Professional Audio Engine

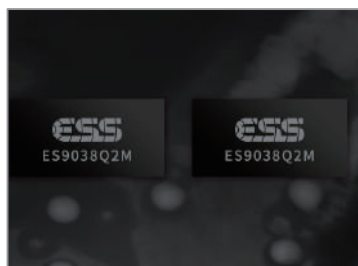
The DMP-A6 Master Edition is a high-end Hi-Fi all-in-one player, ushering in a new epoch of streamer industry. It is equipped with a quad-core processor and large memory. Specifically tailored for audio characteristics, it features a highly efficient and stable proprietary digital audio playback system. It utilizes dual ESS9038Q2M professional DAC, supporting multiple routes for digital and analog audio decoding outputs. Upgrades include the implementation of OPA1612 with extremely low noise density and ultra-low distortion, as well as a low-jitter dual femtosecond clock module processor. Its outstanding audio performance, coupled with a highly interactive local management software, will provide music enthusiasts with an unprecedented and engaging experience.



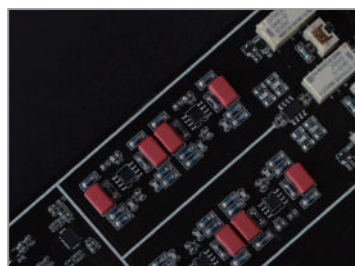
## DMP-A6 Master Edition

### Specifications

- CPU: Quad-core ARM Cortex-A55
- Screen Display: 6-inch LCD touchscreen
- Internal Storage: 4GB LPDDR4 + 32GB eMMC
- DAC: ES9038Q2M\*2
- DAC Decoding: DSD512, PCM768Hz@32Bit MQA
- Operational Amplifier Chip: OPA1612
- Audio Characteristics: THD+N: -120dB SNR: 128dB DNR: 128dB
- Audio Formats: DSD (.dsf/.dff/.ios/.dst), APE, FLAC, WAV, MQA, etc.
- Bluetooth Protocol: SBC/AAC/aptX/aptX LL/aptX HD/LDAC
- Storage Expansion: Built-in expandable M.2 NVMe 3.0 2280 SSD slot, supporting up to 4TB
- Control Method: Mobile App, touchscreen control, optional remote control
- Music Services: Roon Ready, Tidal Connect, Amazon Music, Qobuz, Highresaudio, Tidal;  
Supports streaming by DLNA



Dual ES9038Q2M DAC



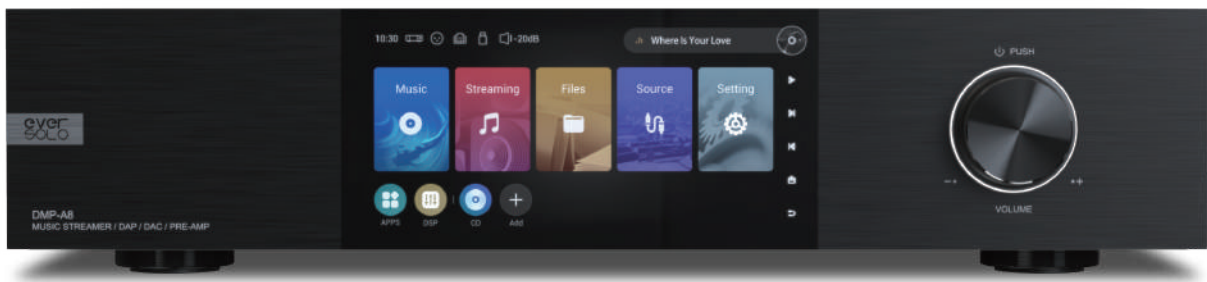
OPA1612 I/V



Dual Femtosecond Clocks

# Ultimate Perfection Accurate Representation of Sound

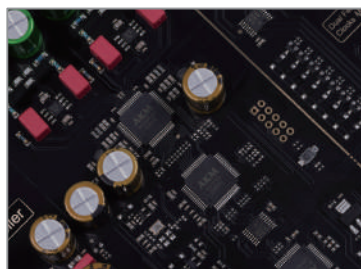
The DMP-A8 is a newly crafted flagship all-in-one streamer for high-quality audio playback. It features self-developed EOS audio engine and ARC input, integrating music streamer, DAP, DAC, and Preamp all in one device. With a full aluminum structure and an ingenious exterior design, it's equipped with globally acclaimed VELET SOUND's new generation AKM audio product with the world's highest-grade original sound reproduction core. The AKM's new flagship digital-analog separation DAC, based on a 4GB+64GB large storage, dual femtosecond clock synchronization processing, higher-precision R2R volume control, and abundant input and output ports to meet various equipment combinations, fulfilling your every desire.



## DMP-A8

### Specifications

- CPU: Quad-core ARM Cortex-A55
- Screen Display: 6-inch LCD touchscreen
- Internal Storage: 4GB LPDDR4 + 64GB eMMC
- DAC: AK4499EX + AK4191EQ
- DAC Decoding: DSD512, PCM768Hz @ 32Bit
- Audio Processor: XMOS XU316
- Operational Amplifier Chip: OPA1612
- Output Level: 4.2V (RCA output level 2.1V)
- Frequency Response: 20Hz-20KHz
- Audio Characteristics: THD+N: -120dB SNR: 128dB DNR: 128dB
- Audio Formats: DSD (.dsf/.dff/.ios/.dst), PCM, APE, FLAC, WAV, etc.
- Bluetooth Protocol: SBC/AAC/aptX/aptX LL/aptX HD/LDAC
- Storage Expansion: Built-in expandable storage M.2 NVME3.0 2280 SSD slot, supports up to 4TB
- Control Methods: Mobile App, touchscreen control, Bluetooth remote control
- Music Services: Tidal Connect, Amazon Music, Qobuz, Highresaudio, Tidal; Supports streaming by DLNA



AK4499EX+AK4191EQ



Dual Femtosecond Clocks



R2R Volume Control

# Masterpiece Flagship Experience Heavenly Sound

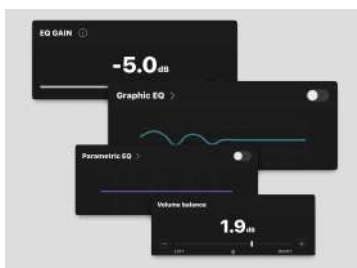
The DMP-A10 chassis blends modern aesthetics with romanticism, precision-engineered with CNC technology. At 430mm, it fits seamlessly into high-end audio systems, combining functionality and elegance. With a high-speed electrical isolation system, the DMP-A10 separates noise and interference from different circuit boards. The complete physical isolation eliminates any possible interference to audio circuits in the transmission of system circuit signals, ensuring that the audio signal remains pure and undisturbed. The display panel features a shielding design as well, resulting in outstanding audio clarity and precision for an unrivalled listening experience.



DMP-A10

## Specifications

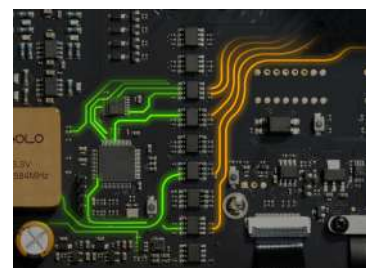
- Model: Eversolo DMP-A10
- Display: 6.5" LCD touchscreen
- Internal Memory: 4GDDR4 + 64GeMMC
- DAC: ES9039 PRO
- Audio Processor: XMOS XU316
- Op amp chip: OPA1612
- Power Supply: 2\* High-quality, low-noise linear power supply
- SSD: Support M.2 NVME 3.0 2280 protocol, up to 4TB\*2 (SSDs are not included)
- USB-A Port: USB3.0\*2
- Ethernet: RJ-45(10/100/1000Mbps)
- SFP Fiber Ethernet: Supports external single-mode single-fiber and single-mode dual-fiber SFR modules (SFP modules need to be purchased separately)
- WiFi: WiFi 2.4G+5G dual band



Perfect Sound  
Anytime



SFP Fiber  
Network Interface



Precision Meets Purity

ever  
SOLO

DMP-A8  
MUSIC STREAMER / DAP / DAC / PRE-AMP

10:30     11-20dB 



Settings

Apps

Google

Amazon music

Spotify



When you told you love me

Source

Free choice

DSP

Show availability

PUSH

VOLUME

# Dynamic Power Detailed Presentation

The AMP-F2 is a great work with united strength of Starke Sound and Eversolo, based on Starke Sound NS600 amp module, it's raising its sampling rate to 600 kHz and further reducing noise with a newly designed SAPS switch mode power supply of 600 watts. Implementing the high efficiency of class D with all circuits supporting maximum sound quality, AMP-F2 also offers the flexibility of 2-channel or bridged mono channel operation. With the same width and height, and optimized signal path, AMP-F2 is a perfect match with DMP-A6, an ideal combination of value and performance.



## AMP-F2

### Specifications

- Output Power: 145W RMS at 8 ohms (1% THD)  
250W RMS at 4 ohms (1% THD)  
280W RMS at 4 ohms (1% THD, BTL)  
450W RMS at 2 ohms (1% THD, BTL)
- Channel Quantity: 2 Channels
- Frequency Response: 10Hz-20KHz – 1dB
- Maximum Output Current Per Channel: 16.5A/33A(Bridge)
- Signal-To-Noise Ratio (SNR) : >110dB, “A” weighted at 4 ohm 250W
- THD: 0.003% 10W at 1KHz
- Input Terminals: 2-Channel RCA Input 2-Channel XLR Input
- Input Impedance: 11K $\Omega$  (RCA); 22K $\Omega$  (XLR)
- Input Sensitivity: 2.7V
- Output Impedance: 0.136 $\Omega$  (5 Hz to 100 kHz)
- Minimum Load Impedance: 0.8 $\Omega$
- Power Consumption: Standby  $\leq$ 0.5W Idle  $\leq$ 14W Maximum 900W
- Control Option: 12V trigger input & output



Aluminum Body  
Shielding Design



Powerful Power Drive



Ultra-low Standby Power  
and Power Consumption

# Robust Output Authentic Experience

The Eversolo AMP-F10 delivers up to 950W in bridged mode and 320W per channel at 4 ohms, ensuring powerful performance across all volume levels. Whether you're enjoying stereo sound at home or experiencing the electrifying atmosphere of live music in a large space, the AMP-F10 delivers impressive power that draws you into an unparalleled soundstage. \*At 8 ohms, it can provide 200W of power per channel, and up to 650W in bridged mode. \*At 4 ohms, it can provide 320W of power per channel, and up to 950W in bridged mode.



AMP-F10

## Specifications

- Continuous Output Power (120V /240V AC): 200W RMS@80;  
320W RMS@40;  
450W RMS@20;  
650W RMS@80(Bridge mode)  
950W RMS@40(Bridge mode)
- Frequency Response: 10-30KHz @80: +0.5dB
- Crosstalk: 200W@80/1KHz: <-95dB



Dynamic and Deatiled  
Representation



Advanced DC  
Filtering Circuit



Dual-Channel Independent  
Linear Power Supply

# Streaming Amplifier Play/Play CD Edition

Whether you're a passionate music enthusiast or an audiophile, the Eversolo Play will elevate your listening journey, becoming an indispensable part of your musical lifestyle.



AMP x DMP x STREAMING

## Specifications

- Model: Play
- Display: 5.5" LCD touchscreen
- DAC: AK4493SEQ
- Storage: 4G DDR4 +32G eMMC
- USB Ports: UDB3.0\*2
- Ethernet: RJ-45(10/100/1000Mbps)
- Wi-Fi: 2.4G+5G dual band
- Playback & Decoding: Supports up to stereo DSD512 and PCM 768KHz 32-Bit
- Music File Formats: DSD(DSF,DFF,SACD ISO Support DST up to DSD512), MP3, APE, WAV, FLAC, AIF, AIFF, AAC NRG, CUE
- Music Streaming: Roon Ready, Tidal Connect, DLNA etc
- Bluetooth Input: BT 5.0, supports SBC/AAC
- Subwoofer Output: Adjustable crossover frequency from 30-500 Hz
- Amplifier Output: 60W/8Ω; 120W/4Ω
- Control Methods: On-screen touch control, Android/iPhone/iPad APP control
- Only the CD Edition includes a CD-ROM and supports CD Ripper



Light Ring



5.5" LCD  
touchscreen



UV meter



Eversolo Audio Technology Co.,Ltd., also known as Eversolo, is a wholly-owned subsidiary invested by Shenzhen Zidoo Technology Co., Ltd. Our research and development expertise cover various areas, including audio decoding, analog audio, acoustic tuning, amplifiers and system integration. The core founding team of the company has years of experience in technical development and management in the high-fidelity audio industry, which ensures Eversolo to hold multiple unique technologies in DACs, headphone amplifiers, and amplifiers, with a commitment to providing audio enthusiasts with more professional and user-friendly audio equipment.



[www.homemation.co.za](http://www.homemation.co.za)



011 781 8887



[info@homemation.co.za](mailto:info@homemation.co.za)



JOHANNESBURG

14 Commerce Crescent  
Kramerville Sandton,  
2090

CAPE TOWN

Unit 10B,  
The Waverley Business Park  
Kotzee Road, Mowbray