



Premium HiFi Speakers for Home Theatre & Stereo



Uncompromising performance. Unflinching accuracy. Unwavering reliability.

Harnessing the myriad technical advantages of electrostatic principles to recreate sound in its truest form- this is what MartinLogan is all about. Truth in Sound is the guiding philosophy of MartinLogan. Our mission is to use this unique and astonishing technology to render the most complex musical passages as faithfully to the original source as possible. If breathtaking, lifelike audio accuracy is important to you, you owe it to yourself to hear **MartinLogan.**

Abyss

3

Dynamo Foundation

4

Dynamo

5

Motion

6

Motion Compact

16

Motion SLM

18

Masterpiece CI

20

24

Motion CI

26

Motion XTCI

28

Installer

Outdoor Living

34

ABYSS™

High-Resolution Subwoofer System

Seamlessly Integrating High-Performance Audio with Elegant Design

Emphasizing high performance and decor-friendly aesthetics, MartinLogan subwoofers expertly blend audiophile musicality and theatricality with dynamic output and accuracy in a compact design. As with all MartinLogan subwoofers, the Abyss Series is designed to work with any speaker system while being uniquely engineered to keep pace with the exotic thin-film technologies utilized in MartinLogan loudspeakers.



Abyss™ 10



Abyss™ 8

ABYSS

Supercharged Performance.
Miniaturized Size.

ABYSS 8

Application

Subwoofer

Frequency Response

23–120 Hz ±3 dB (Anechoic via LFE input)

Low Frequency Transducer

Triple 8" (20.3cm) Hybrid Woofer System consisting of a single high-excursion, anodized-aluminum cone in a stamped steel basket with dual anodized-aluminum cone passive radiators

Amplifier

Magnitude MT-1kW Amplifier with 1,000W peak (500W continuous)

Digital Signal Processing

Ultra High-Resolution 500MHz Vojtko DSP Engine with 64bit processing

Cabinet

Precision-crafted, sealed MDF enclosure featuring a robust 1-inch thick MDF structure with reinforced woofer baffles and center brace

ABYSS 10

Application

Subwoofer

Frequency Response

22–120 Hz ±3 dB (Anechoic via LFE input)

Low Frequency Transducer

Triple 10" (25.4cm) Hybrid Woofer System consisting of a single high-excursion, anodized-aluminum cone in a stamped steel basket with dual anodized-aluminum cone passive radiators

Amplifier

Magnitude MT-1.6kW Amplifier with 1,600W peak (800W continuous)

Digital Signal Processing

Ultra High-Resolution 500MHz Vojtko DSP Engine with 64bit processing

Cabinet

Precision-crafted, sealed MDF enclosure featuring a robust 1-inch thick MDF structure with reinforced baffle

Controls (on backplate)

Level: Interactive LED Backlit Knob
Tone Sweep: Sweep Start and Pause (with status light)
Power Mode: On, 12v Trigger, Auto
Wireless Audio Pairing Button (for included MartinLogan wireless transmitter)

Controls (via Bluetooth)

Level: -40 to 12dB (Min-Max)
Low-Pass Filter (Frequency): 35–120Hz (1° Increments)
Low-Pass Filter (Order): Bypass, Third, Fourth
Phase: 0–180° (1° Increments)
Phase (Polarity): Normal, Inverted
Preset Listening Modes: Movie, Music, Night
20–30Hz Level: ±10dB
Anthem Room Correction (ARC Genesis): On, Off
Tone Sweep (120-20Hz): On, Off, Pause (Frequency)

Inputs

Line Level: Left, Right, and LFE
XLR: LFE
Speaker Level: Left and Right (requires banana plugs)

Wireless Input

Integrated Wireless Receiver, Wireless Transmitter Included

Power Draw

Max: 500W
Standby (Wireless Disabled): 0.5W
Standby (Wireless Enabled): <2W
*Transmitter and Subwoofer combined

Feet

Integrated Anti-Vibration Feet (carpet spikes included)

Weight

46.7 lbs (21.2 kg)

Dimensions (HxWxD)*

13.5" x 13.2" x 13.2"
(34.3cm x 33.5cm x 33.5cm)

Finish

Gloss Black or Satin White

Inputs

Line Level: Left, Right, and LFE
XLR: LFE
Speaker Level: Left and Right (requires banana plugs)

Wireless Input

Integrated Wireless Receiver, Wireless Transmitter Included

Power Draw

Max: 800W
Standby (Wireless Disabled): 0.5W
Standby (Wireless Enabled): <2W
*Transmitter and Subwoofer combined

Feet

Integrated Anti-Vibration Feet (carpet spikes included)

Weight

55.6 lbs (25.2 kg)

Dimensions (HxWxD)*

15.4" x 15" x 15"
(39.1cm x 38cm x 38cm)

Finish

Gloss Black

*Product height includes feet, other dimensions are cabinet only.
Specifications are subject to change without notice.

DYNAMO™

FOUNDATION®

**DYNAMO
FOUNDATION**

Powerful.
Compact.
Precise

MartinLogan Dynamo Foundation Subwoofers are carefully engineered for superior audio quality, integrating advanced technology with sophisticated design to help provide incredible home entertainment experiences, at an exceptional value.



FOUNDATION 10

Application

Subwoofer

Frequency Response

25–200 Hz ± 3 dB (Anechoic via LFE input)

Low Frequency Transducer

10" (25.4cm) high-excursion, Ultra-Rigid Polypropylene (URP) cone in a stamped steel basket

Amplifier

Magnitude® MT-400 Amplifier with 400W peak (200W continuous)

Digital Signal Processing

High-resolution 200MHz DSP engine with 56-bit processing

Cabinet

Sealed MDF cabinet with reinforced MDF woofer baffle

Controls (on backplate)

Level: Min–Max
Low-Pass Filter: 40Hz-Bypass
Power Mode: On, Auto
Phase: 0°, 180°

Inputs

Line Level: Left, Right/LFE

Wireless Input

WSK-1 Kit Sold Separately

Power Draw

Max: 250W
Standby: 0.5W

Feet

Non-Slip

Weight

23.8 lbs. (10.8 kg)

Dimensions (HxWxD)*

13" x 12-3/4" x 12-3/4"
(33cm x 31.3cm x 31.3cm)

Finish

Brushed black vinyl with high-gloss top

FOUNDATION 12

Application

Subwoofer

Frequency Response

24–200 Hz ± 3 dB (Anechoic via LFE input)

Low Frequency Transducer

12" (30.5cm) high-excursion, Ultra-Rigid Polypropylene (URP) cone in a stamped steel basket

Amplifier

Magnitude® MT-700 Amplifier with 700W peak (350W continuous)

Digital Signal Processing

High-resolution 200MHz DSP engine with 56-bit processing

Cabinet

Sealed MDF cabinet with reinforced MDF woofer baffle

Controls (on backplate)

Level: Min–Max
Low-Pass Filter: 40Hz-Bypass
Power Mode: On, Auto
Phase: 0°, 180°

Inputs

Line Level: Left, Right/LFE

Wireless Input

WSK-1 Kit Sold Separately

Power Draw

Max: 350W
Standby: 0.5W

Feet

Non-Slip

Weight

29.1 lbs. (13.2 kg)

Dimensions (HxWxD)*

16" x 14" x 14"
(40.6cm x 35.8cm x 35.8cm)

Finish

Brushed black vinyl with high-gloss top



Foundation® 12



Foundation® 10

**Product dimensions include feet, binding posts, and grilles.
Specifications are subject to change without notice.*

DYNAMO™

High-Resolution Subwoofer System

Dynamo Series subwoofers carry forward the namesake of one of MartinLogan's most popular products of all time, the original Dynamo subwoofer, known for its impeccable precision, compact size, and indisputable quality. The Dynamo Series subwoofers continue that legacy while incorporating modern technologies and innovations, creating a completely new take on this classic recipe.



Dynamo™ 12



Dynamo™ 10

DYNAMO

Impeccable precision.
Indisputable quality.

DYNAMO 10

Application
Subwoofer

Frequency Response
23–200 Hz ± 3 dB (Anechoic via LFE input)

Low Frequency Transducer
10" (25.4cm) high-excursion, anodized-aluminum cone in a stamped steel basket

Amplifier
Magnitude® MT-1kW Amplifier with 1,000W peak (500W continuous)

Digital Signal Processing
Ultra High-Resolution 500MHz Vojtko DSP Engine with 64bit processing

Cabinet
Precision-crafted, sealed MDF enclosure featuring a robust 1-inch thick MDF woofer baffle

Controls (on backplate)

Level: Interactive LED Backlit Knob
Tone Sweep: Sweep Start and Pause (with status light)
Power Mode: On, 12v Trigger, Auto
Wireless Audio Pairing Button (for included MartinLogan wireless transmitter)

Controls (via Bluetooth)

Level: -40 to 12dB (Min-Max)
Low-Pass Filter (Frequency): 35–120Hz (1° Increments)
Low-Pass Filter (Order): Bypass, Third, Fourth
Phase: 0–180° (1° Increments)
Phase (Polarity): Normal, Inverted
Preset Listening Modes: Movie, Music, Night
20–30Hz Level: ± 10 dB
Anthem Room Correction (ARC Genesis): On, Off
Tone Sweep (120-20Hz): On, Off, Pause (Frequency)

Inputs

Line Level: Left, Right, and LFE
XLR: LFE
Speaker Level: Left and Right (requires banana plugs)

Wireless Input

Integrated Wireless Receiver, Wireless Transmitter Included

Power Draw

Max: 500W
Standby (Wireless Disabled): 0.5W
Standby (Wireless Enabled): <2W
*Transmitter and Subwoofer combined

Feet

Integrated Anti-Vibration Feet (carpet spikes included)

Weight

42.8 lbs (19.4 kg)

Dimensions (HxWxD)*

14-3/4" x 13-3/4" x 13-3/4"
(37.3cm x 34.8cm x 34.8cm)

Finish

Gloss Black or Satin White

DYNAMO 12

Application
Subwoofer

Frequency Response
22–200 Hz ± 3 dB (Anechoic via LFE input)

Low Frequency Transducer
12" (25.4cm) high-excursion, anodized-aluminum cone in a stamped steel basket

Amplifier
Magnitude® MT-1.6kW Amplifier with 1,600W peak (800W continuous)

Digital Signal Processing
Ultra High-Resolution 500MHz Vojtko DSP Engine with 64bit processing

Cabinet
Precision-crafted, sealed MDF enclosure featuring a robust 1-inch thick MDF woofer baffle

Inputs

Line Level: Left, Right, and LFE
XLR: LFE
Speaker Level: Left and Right (requires banana plugs)

Wireless Input

Integrated Wireless Receiver, Wireless Transmitter Included

Power Draw

Max: 800W
Standby (Wireless Disabled): 0.5W
Standby (Wireless Enabled): <2W
*Transmitter and Subwoofer combined

Feet

Integrated Anti-Vibration Feet (carpet spikes included)

Weight

61.5 lbs (27.9 kg)

Dimensions (HxWxD)*

16-3/4" x 15-3/4" x 15-3/4"
(42.4cm x 39.9cm x 39.9cm)

Finish

Gloss Black

*Product dimensions include feet, binding posts, and grilles.
Specifications are subject to change without notice.

MOTION

Motion

High-performance
Top of the line

MartinLogan's Motion Series is inspired by the performance of our top-of-the-line electrostatic speakers and is perfect for music or home cinema lovers. Pairing high-performance Woven Fiberglass midrange drivers with the latest Gen2 Folded Motion Tweeter technology.





3 FINISHES AVAILABLE



Gloss Black



Satin White



Walnut



F200

High-Performance
Folded Motion® XT
**Floorstanding
Speaker**

Our Ultimate Performance Motion® XT tower sets a new bar for performance in its class and beyond.

The Motion® XT F200 is the pinnacle of audio excellence, boasting the most advanced technologies available. The high-output, low-distortion Gen2 FMT XT and Folded Motion® Waveguide, seamlessly integrated with a Nomex®-Reinforced Kevlar® midrange and triple 8" aluminum bass drivers, creating a truly unparalleled listening experience. The effortless, dynamic bass and stunning clarity, coupled with precise, accurate detail, make this speaker the ultimate choice for discerning audiophiles and professionals alike.



F100

High-Performance
Folded Motion® XT
**Floorstanding
Speaker**

Step up XT series performance upgrades with triple bass drivers makes for a compelling option for those looking for a high performance tower speaker.

Experience exceptional sound quality with our Gen2 Folded Motion® XT Tweeter, featuring Folded Motion® Waveguide technology seamlessly integrated into a sleek front baffle design. The Nomex®-Reinforced Kevlar® midrange offers improved resonance reduction and clarity, while the triple 6.5" aluminum woofers provide powerful and dynamic bass. The Motion® XT F100 is perfect for any audio setup.



C100

High-Performance
Folded Motion® XT
**Center Channel
Speaker**

The ideal performance focused Center Channel for any Motion® home theater system.

Upgrade your surround sound system with our optimal center channel — the perfect complement to any Motion® XT or Motion® based setup. The latest Gen2 Folded Motion® XT Tweeter with advanced Motion® waveguide technology provides exceptional dialogue clarity and consistency for all listeners. The “anti-lobing” crossover design enhances accuracy, and the “flippable” cabinet design allows for a slight angle, making it ideal for low-mounted shelves or TV stands.





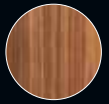
3 FINISHES AVAILABLE



Gloss Black



Satin White



Walnut

B100

High-Performance
Folded Motion® XT
**Floorstanding
Speaker**

Our best bookshelf speaker for those wanting maximum performance without moving to a tower speaker.

Experience superior audio performance with our B100 bookshelf speaker — the ultimate choice for high-output sound without the need for a tower speaker. The Gen2 Folded Motion® XT Tweeter and Nomex®-Reinforced Kevlar® woofer deliver exceptional clarity and precision, making it ideal for 2-channel or home theater setups, particularly when paired with a subwoofer. This stand mount option comes with the added convenience of being able to securely attach to our matching STAND25 speaker stand for added stability. Enjoy exceptional sound from a compact and versatile package.



STAND25

**Premium
Speaker Stand**

The perfect match for the B100, STAND25 includes interchangeable color trim pieces and attaches to the speaker base for maximum stability.





3 FINISHES AVAILABLE



Gloss Black



Satin White



Walnut



F20

High-Performance
Folded Motion®
**Floorstanding
Speaker**

The flagship of the Motion® range delivers even more performance while keeping a very manageable footprint.

Experience unparalleled detail, clarity, and power in a sleek and unobtrusive floorstanding design. Equipped with the advanced Gen2 FMT technology and featuring a Woven Fiberglass midrange and dual 6.5" aluminum bass drivers, the Motion® F20 is the perfect addition to any home theater or 2-channel setup. Boasting exceptional bass extension and dynamics, the Motion® F20 strikes the perfect balance of performance and size, making it the ideal choice for discerning audio enthusiasts.



F10

High-Performance
Folded Motion®
**Floorstanding
Speaker**

Our most compact tower model, F10 absolutely defies expectations with its huge performance and compact size.

Despite its small size, it delivers exceptional levels of detail, clarity, and dynamics that surpass expectations. Standing at under 39 inches, the F10 seamlessly blends into any decor without being obtrusive. Equipped with our advanced Gen2 FMT technology, a Woven Fiberglass midrange, and dual 5.5" aluminum bass drivers, the F10 provides an immersive listening experience for all your favorite content. Its approachable size, outstanding performance, and striking design make it the perfect choice for those seeking high-end audio without the bulk of larger speakers.



C10

High-Performance
Folded Motion®
**Center Channel
Speaker**

The ideal compact Center Channel option to deliver crystal clear dialogue perfectly complimenting your Motion® home theater system.

The angled "flippable" cabinet design of C10 allows you to angle the speaker upwards toward the listener when it is mounted on a lower shelf, helping to improve dialogue clarity by aiming the sound up towards your ears instead of directly into your furniture. The 2.5-way anti-lobing crossover design optimizes the dual woofers for maximum clarity, free of the performance robbing lobing present in conventional designs. We also designed the C10 to be relatively compact so it is compatible with more furniture options than larger designs.





3 FINISHES AVAILABLE



Gloss Black



Satin White



Walnut



B10

High-Performance
Folded Motion®
**Bookshelf
Speaker**

**Redefining what to expect from a compact
bookshelf speaker.**

Bookshelf or stand-mount speakers like the Motion® B10 are extremely popular for a variety of purposes from dedicated music systems, to Home Theaters and everything in between. Motion® B10 offers impressive performance from its Gen2 FMT and Woven Fiberglass woofer, delivering musicality and scale not typical of its size. Being less than 10" deep, the B10 is a practical option for placement on a shelf, desk, cabinet or other flat surface. For those desiring a stand mount solution, our optional (sold separately) STAND25 speaker stand can bolt directly into the bottom of the speaker for maximum stability.



MP10

High-Performance
Folded Motion®
**Multi-Purpose
Speaker**

**Its incredible versatility delivers amazing performance wherever
you need it.**

As the most versatile speaker in the Motion® lineup, the MP10 can be used as almost any channel in a Home Theater, or as part of a dedicated 2-channel system. The innovative shape and mounting system allows MP10 to be used as a shallow depth bookshelf speaker or wall mounted using the included mounting bracket. It can be mounted parallel to the wall surface or flipped upside down to angle downwards into the room, perfect for when installation above ear level is desired. MP10's Gen2 FMT and Folded Motion® Waveguide ensure that your listening area is blanketed in clear, detailed sound wherever you decide to install it.





F200

High-Performance
Folded Motion® XT
**Floorstanding
Speaker**



F100

High-Performance
Folded Motion® XT
**Floorstanding
Speaker**



C100

High-Performance
Folded Motion® XT
**Center Channel
Speaker**



B100

High-Performance
Folded Motion® XT
**Bookshelf
Speaker**

Application	Floorstanding	Floorstanding	Center Channel	Bookshelf
Frequency Response	27 Hz - 25k Hz ± 3 dB	31 Hz - 25 kHz ± 3 dB	42 Hz - 25 kHz ± 3 dB	45 Hz - 25 kHz ± 3 dB
Folded Motion® Waveguide Enhanced Tweeter Dispersion (VxH)	45° x 90°	45° x 90°	45° x 90°	45° x 90°
Sensitivity (2.83 volts/meter)	92 dB	92 dB	93 dB	93 dB
Impedance Compatible with 4, 6, or 8 Ohm rated amplifiers	4 ohms	4 ohms	5 ohms	4 ohms
Crossover Frequency	300Hz, 2600Hz (3-way)	280 Hz, 2600 Hz (3-way)	1,300 Hz, 2,500 Hz (2.5-way)	2,600 Hz (2-way)
High Frequency Driver	1.25" x 2.4" (3.2 x 6.1cm) Gen2 Obsidian Folded Motion® XT Tweeter with 12.4 in² (79.8 cm²) diaphragm	1.25" x 2.4" (3.2 x 6.1cm) Gen2 Obsidian Folded Motion® XT Tweeter with 12.4 in² (79.8 cm²) diaphragm	1.25" x 2.4" (3.2 x 6.1cm) Gen2 Obsidian Folded Motion® XT Tweeter with 12.4 in² (79.8 cm²) diaphragm	1.25" x 2.4" (3.2 x 6.1cm) Gen2 Obsidian Folded Motion® XT Tweeter with 12.4 in² (79.8 cm²) diaphragm
Mid Frequency Driver	6.5" (16.5cm) Nomex® Reinforced Kevlar® cone with cast aluminum basket. Non-resonant sealed chamber format. Unibody cone construction.	6.5" (16.5cm) Nomex® Reinforced Kevlar® cone with cast aluminum basket. Non-resonant sealed chamber format. Unibody cone construction.	2x 6.5" (16.5cm) Nomex® Reinforced Kevlar® cones with cast aluminum baskets. Non-resonant asymmetrical chamber format. Unibody cone construction. Anti-lobing 2.5-way crossover design.	6.5" (16.5cm) Nomex® Reinforced Kevlar® cone with cast aluminum basket. Non-resonant asymmetrical chamber format. Unibody cone construction.
Low Frequency Drivers	3x 8" (20.3cm) aluminum cones with cast aluminum baskets. Non-resonant asymmetrical chamber format. Unibody cone construction	3x 6.5" (16.5cm) aluminum cones with cast aluminum baskets. Non-resonant asymmetrical chamber format. Unibody cone construction.	—	—
Cabinet	Bottom Ported	Bottom Ported	Rear Ported	Rear Ported
Recommended Amp Power	20 - 600 watts	20 - 450 watts	20 - 300 watts	20 - 250 watts
Binding Post Inputs	Custom bi-amp/bi-wire capable 5-way binding posts	Custom bi-amp/bi-wire capable 5-way binding posts	Custom bi-amp/bi-wire capable 5-way binding posts	Custom bi-amp/bi-wire capable 5-way binding posts
Weight	86lbs / 39kg	76lbs / 34.5kg	34lbs / 15.4kg	20.5lbs / 9.3kg
Dimensions (HxWxD) Floorstanding model dimensions include the feet. Depth for all models include the binding posts	50-3/4" x 13-3/4" x 16-1/2" 128.9cm x 34.9cm x 41.9cm	47-3/4" x 12-1/2" x 15" 121.3cm x 31.75cm x 38.1cm	8" x 24" x 14-1/2" 20.3cm x 61cm x 36.8cm	14-1/2" x 8" x 12-1/2" 36.8cm x 20.3cm x 31.8cm
Finish	Gloss Black, Walnut, and Satin White	Gloss Black, Walnut, and Satin White	Gloss Black, Walnut, and Satin White	Gloss Black, Walnut, and Satin White





F20

High-Performance
Folded Motion®
**Floorstanding
Speaker**



F10

High-Performance
Folded Motion®
**Floorstanding
Speaker**



C10

High-Performance
Folded Motion®
**Center Channel
Speaker**



B10

High-Performance
Folded Motion®
**Bookshelf
Speaker**



MP10

High-Performance
Folded Motion®
**Multi-Purpose
Speaker**

Floorstanding	Floorstanding	Center Channel	Bookshelf	Multi-Purpose
35 Hz - 25kHz ± 3 dB	38 Hz - 25 kHz ± 3 dB	63 Hz - 25 kHz ± 3 dB	56 Hz - 25 kHz ± 3 dB	81 Hz - 25kHz ± 3 dB
90° x 90°	90° x 90°	90° x 90°	90° x 90°	90° x 90°
92 dB	92 dB	93 dB	92 dB	92 dB
4 ohms	4 ohms	4 ohms	5 ohms	5 ohms
230 Hz, 2,600 Hz (3-way)	280 Hz, 3,000 Hz (3-way)	1000 Hz, 2,000 Hz (2.5-way)	2,370 Hz (2-way)	2,100 Hz (2-way)
1" x 1.4" (2.6 x 3.6cm) Gen2 Obsidian Folded Motion® Tweeter with 9.2 in² (59.4 cm²) diaphragm	1" x 1.4" (2.6 x 3.6cm) Gen2 Obsidian Folded Motion® Tweeter with 9.2 in² (59.4 cm²) diaphragm	1" x 1.4" (2.6 x 3.6cm) Gen2 Obsidian Folded Motion® Tweeter with 9.2 in² (59.4 cm²) diaphragm	1" x 1.4" (2.6 x 3.6cm) Gen2 Obsidian Folded Motion® Tweeter with 9.2 in² (59.4 cm²) diaphragm	1" x 1.4" (2.6 x 3.6cm) Gen2 Obsidian Folded Motion® Tweeter with 9.2 in² (59.4 cm²) diaphragm
5.5" (14cm) Woven Fiberglass cone with cast polymer basket. Non-resonant sealed chamber format. Unibody cone construction.	5.5" (14cm) Woven Fiberglass cone with cast polymer basket. Non-resonant sealed chamber format. Unibody cone construction.	2x 5.5" (14cm) Woven Fiberglass cones with cast polymer baskets. Non-resonant sealed chamber format. Unibody cone construction. Anti-lobing 2.5-way crossover design.	5.5" (14cm) Woven Fiberglass cone with cast polymer basket. Unibody cone construction.	5.5" (14cm) Woven Fiberglass cone with cast polymer basket. Unibody cone construction.
2x 6.5" (16.5cm) aluminum cones with cast polymer baskets. Non-resonant asymmetrical chamber format. Unibody cone construction.	2x 5.5" (14cm) aluminum cones with cast polymer baskets. Non-resonant asymmetrical chamber format. Unibody cone construction.	—	—	—
Bottom Ported	Bottom Ported	Rear Ported	Rear Ported	Stealth Rear Ported
20 - 300 watts	20 - 250 watts	20 - 200 watts	20 - 200 watts	20 - 200 watts
Custom bi-amp/bi-wire capable 5-way binding posts	Custom bi-amp/bi-wire capable 5-way binding posts	Custom 5-way binding posts	Custom 5-way binding posts	Custom 5-way binding posts
60lbs / 27.2kg	50.5lbs / 22.9kg	23.5lbs / 10.7kg	14.5lbs / 6.6kg	9.7lbs / 4.4kg
44-3/4" x 11-3/4" x 14-1/4" 112.7cm x 29.8cm x 36.2cm	38-1/4" x 11-1/4" x 13-1/4" 97.1cm x 28.6cm x 33.6cm	7-1/4" x 19" x 11-1/2" 18.4cm x 48.3cm x 29.3cm	12-1/2" x 7" x 9-3/4" 31.8cm x 17.8cm x 24.8cm	14" x 8" x 5" 35.6cm x 20.3cm x 12.7cm
Gloss Black, Walnut, and Satin White	Gloss Black, Walnut, and Satin White	Gloss Black, Walnut, and Satin White	Gloss Black, Walnut, and Satin White	Gloss Black, Walnut, and Satin White



3 FINISHES AVAILABLE



Black

Satin White

Walnut



F2

High-Performance
Folded Motion®
**Floorstanding
Speaker**

The flagship of the Motion® Foundation® range, the Foundation® F2 offers maximum performance and value in a floorstanding design.

For those looking for the most dynamic listening experience, floorstanding speakers are the ideal choice. F2 pairs the Gen2 Obsidian Folded Motion® Tweeter S with 3 custom designed 6.5" aluminum woofers resulting in incredible speed, detail, and clarity. Further enhancing the listening experience is the Folded Motion® Waveguide which provides a more consistent and accurate listening experience by aligning the output of the tweeter and midrange in perfect harmony. The Foundation® F2 is perfect for a high performance, high value 2 channel or home theater system.



F1

High-Performance
Folded Motion®
**Floorstanding
Speaker**

The Foundation® F1 is perfect for those desiring the performance of a floorstanding speaker but would prefer a more compact design.

Offering a tighter footprint than the larger Foundation® F2, the Foundation® F1 is ideal for those with smaller spaces. The star of the show is the Gen2 Obsidian Folded Motion® Tweeter S working in tandem with the Folded Motion® Waveguide for shocking levels of clarity, detail, and immersion. Filling out the sound are custom 5.5" aluminum drivers that combine high strength and low mass for impressive speed and detail. Foundation® F1 is a great choice for high performance in modestly sized rooms.



C1

High-Performance
Folded Motion®
**Center Channel
Speaker**

Foundation® C1 rounds out the front stage of any Foundation® surround sound system all in a space conscious design.

For those building out a surround sound system, the center channel is one of the most important pieces. The majority of dialogue in a movie comes from this speaker, so it is critically important that it be clear. As with all Motion® Foundation® models the Gen2 Obsidian Folded Motion® Tweeter S and Folded Motion® Waveguide are used to great effect here to blanket your listening area in crystal clear dialogue. Foundation® C1's aluminum midbass drivers are also further enhanced by MartinLogan's signature 2.5-way "Anti-Lobing" center channel design to provide the performance of larger 3-way designs in a much more furniture friendly package.





3 FINISHES AVAILABLE



Black



Satin White



Walnut



B2

High-Performance
Folded Motion®
Floorstanding
Speaker

The largest Motion® Foundation® bookshelf speaker serves up impressive detail and scale completely unexpected in its class.

The versatility, and relatively compact size of bookshelf speakers has long made them a popular choice. Those looking for a fuller sounding stand or shelf mounted solution would be hard pressed to find a better value than the Foundation® B2. Its 6.5" aluminum midbass driver offers impressive bass while the Gen2 Obsidian Folded Motion® Tweeter S works within the Folded Motion® Waveguide to blanket your listening area with beautiful sound. Foundation® B2 is also fully compatible with STAND25 to create a solid stand mount solution.



B1

High-Performance
Folded Motion®
Floorstanding
Speaker

Small stature. Big voice. The most compact Motion® Foundation® model offers unheard of performance from such a versatile size.

The Gen2 Obsidian Folded Motion® Tweeter S, Folded Motion® Waveguide, and 5.5" aluminum midbass driver work together here to create a completely unexpected and engaging experience from a compact footprint. Foundation® B1 is ideal for small spaces, especially when combined with a subwoofer, to create a highly musical and detailed experience wherever high quality sound is desired. Foundation® B1 is also threaded to work with our STAND25 to create a stable stand mount solution.





Motion Compact

Motion 2i, 4i, 6i, and 8i

Folded Motion® Front, Center, and Surround Speakers



Audiophile performance without an audiophile price. Inspired by the clarity and detail of MartinLogan's ultra-high-end electrostatic loudspeakers, Motion 2i, 4i, 6i, and 8i feature exquisite Folded Motion tweeters and powerful bass technology in compact and affordable packages. Key to performance is the lightning fast response of the tweeter's light-weight diaphragm combined with a large surface area (much larger than a typical one-inch dome tweeter) which together achieve a smooth, refined sound with stunning dynamic range and jaw-dropping clarity—certain to inspire envy in audiophiles and non-audiophiles alike. Precision Vojtko™ crossover topology features custom air core coil inductors, low DCR steel laminate inductors, and polyester film and low DF electrolytic capacitors for a seamless sonic presentation. Flexible installation options allow table top or on-wall installation of all four speakers. Motion 2i and 4i bookshelf speakers can also mount upside down to facilitate placement high on a wall. Motion 6i and 8i can mount horizontally or vertically around a wall-mounted flat screen television.



Motion® 2i MARTIN LOGAN

System Frequency Response
115–23,000 Hz ± 3 dB

Dispersion
80° x 80°

Recommended Amplifier Power
20–100 Watts

Maximum Input Power
50 Watts

Sensitivity
86 dB @2.83 volts/meter

Impedance
6 Ohms. Compatible with 4, 6, or 8 Ohm rated amplifiers.

Crossover Frequency
3,800 Hz

High Frequency Driver
0.94" x 1" (2.4cm x 2.5cm) Folded Motion Transducer with 2.8" x 1.25" (7.1cm x 3.2cm) diaphragm.

Low Frequency Driver
3.5" (8.9cm) poly cone with stamped steel basket. Non-resonant asymmetrical chamber format. Rigid structured dust cap to reduce cone break-up modes.

Components
Custom air core coil and low DCR steel laminate inductors. Polyester film capacitors in series and low DF electrolytic capacitors in parallel. Overall system thermal/current protection.

Cabinet
Sealed

Binding Post Inputs
Push style with banana jacks

Finish
Gloss Black

Accessories (included)
Wall mount bracket

Weight
3.4 lbs. each (1.54 kg)

Size (H x W x D)
10" x 4.7" x 4.6" (25.5 x 11.8 x 11.7 cm)

Motion® 4i MARTIN LOGAN

System Frequency Response
70–23,000 Hz ± 3 dB

Dispersion
80° x 80°

Recommended Amplifier Power
20–150 Watts

Maximum Input Power
75 Watts

Sensitivity
90 dB @2.83 volts/meter

Impedance
4 Ohms. Compatible with 4, 6, or 8 Ohm rated amplifiers.

Crossover Frequency
2,900 Hz

High Frequency Driver
1" x 1.4" (2.6cm x 3.6cm) Folded Motion Transducer with 5.25" x 1.75" (13.3cm x 4.4cm) diaphragm.

Low Frequency Driver
4" (10.2cm) paper cone with stamped steel basket. Non-resonant asymmetrical chamber format. Rigid structured dust cap to reduce cone break-up modes.

Components
Custom air core coil and low DCR steel laminate inductors. Polyester film capacitors in series and low DF electrolytic capacitors in parallel. Overall system thermal/current protection.

Controls
Folded Bass Reflex Port

Binding Post Inputs
Push style with banana jacks

Finish
Gloss Black

Accessories (included)
Wall mount bracket

Weight
6 lbs. each (2.72 kg)

Size (H x W x D)
12.6" x 5.6" x 5.7" (32 x 14.3 x 14.5 cm)

Motion® 6i MARTIN LOGAN

System Frequency Response
120–23,000 Hz ± 3 dB

Dispersion
80° x 80°

Recommended Amplifier Power
20–130 Watts

Maximum Input Power
65 Watts

Sensitivity
89 dB @2.83 volts/meter

Impedance
6 Ohms. Compatible with 4, 6, or 8 Ohm rated amplifiers.

Crossover Frequency
4,000 Hz

High Frequency Driver
0.94" x 1" (2.4cm x 2.5cm) Folded Motion Transducer with 2.8" x 1.25" (7.1cm x 3.2cm) diaphragm.

Low Frequency Driver
Two 3.5" (8.9cm) poly cone with stamped steel basket. Non-resonant asymmetrical chamber format. Rigid structured dust cap to reduce cone break-up modes.

Components
Custom air core coil and low DCR steel laminate inductors. Polyester film capacitors in series and low DF electrolytic capacitors in parallel. Overall system thermal/current protection.

Cabinet
Sealed

Binding Post Inputs
Push style with banana jacks

Finish
Gloss Black

Accessories (included)
Two wall mount brackets

Weight
5.7 lbs. each (2.58 kg)

Size (H x W x D)
5.2" x 17.5" x 4" (13.2 x 44.4 x 10.1 cm)

Motion® 8i MARTIN LOGAN

System Frequency Response
70–23,000 Hz ± 3 dB

Dispersion
80° x 80°

Recommended Amplifier Power
20–180 Watts

Maximum Input Power
90 Watts

Sensitivity
89 dB @2.83 volts/meter

Impedance
4 Ohms. Compatible with 4, 6, or 8 Ohm rated amplifiers.

Crossover Frequency
3,000 Hz

High Frequency Driver
1" x 1.4" (2.6cm x 3.6cm) Folded Motion Transducer with 5.25" x 1.75" (13.3cm x 4.4cm) diaphragm.

Low Frequency Driver
Two 4" (10.2cm) paper cone with stamped steel basket. Non-resonant asymmetrical chamber format. Rigid structured dust cap to reduce cone break-up modes.

Components
Custom air core coil and low DCR steel laminate inductors. Polyester film capacitors in series and low DF electrolytic capacitors in parallel. Overall system thermal/current protection.

Controls
Sealed

Binding Post Inputs
Push style with banana jacks

Finish
Gloss Black

Accessories (included)
Two wall mount brackets

Weight
8.5 lbs. each (3.85 kg)

Size (H x W x D)
5.6" x 22" x 5.2" (14.2 x 56 x 13.2 cm)



Specifications are subject to change without notice.

Motion 2i, 4i, 6i, and 8i Folded Motion® Front, Center, and Surround Speakers


MARTIN LOGAN®

Motion SLM

Motion SLM, SLM XL, and SLM X3

Ultra-Slim Folded Motion® Speakers



SLM X3
Horizontal, On-wall or Off-wall



SLM XL
Horizontal or Vertical
On-wall or Off-wall

SLM
Horizontal or Vertical
On-wall or Off-wall



Slender Profile and Stunning Performance. The secret to the outstanding performance of the Motion SLM and SLM XL are the innovative dual 4-inch, ultra-slim fiber cone woofers and 4-inch high-velocity passive bass radiators, paired with a Folded Motion tweeter. Motion SLM X3's 3-channel soundbar design ups the ante with three Folded Motion tweeters and six 4-inch ultra-slim fiber cone woofers. The result is stunning acoustical alchemy typically found in much larger speaker systems. Hidden discretely underneath the grille, the drivers are held securely in place by a solid, black-anodized brushed aluminum baffle mounted flush within the speaker's high-gloss black cabinet. The speakers are less than 2-inches deep when installed on-wall with the magnetic grilles and low-profile wall mount brackets.

The Perfect LCR for Today's Flat Screen Televisions. Folded Motion tweeters have an 80° x 80° dispersion pattern, which allows SLM and SLM XL to sound exactly the same in a horizontal or vertical orientation, making them perfect for Left-Center-Right (LCR) system applications. The logo on the grille is magnetic and can move and rotate to the proper aesthetically pleasing location in any orientation. SLM and SLM XL both include a base designed for vertical applications, allowing the speakers sit on a shelf or equipment cabinet. For applications where on-wall installation is not an option, SLM, SLM XL, and SLM X3 include "kick-stand" brackets that attach to the back of the cabinet, allowing them to free-stand beneath a television.



Motion[®] SLM MARTIN LOGAN

System Frequency Response
110–22,000 Hz ± 3 dB

Dispersion
80° x 80°

Recommended Amplifier Power
20–140 Watts

Maximum Input Power
70 Watts

Sensitivity
94 dB @2.83 volts/meter

Impedance
4 Ohms. Compatible with 4, 6, or 8 Ohm rated amplifiers.

Crossover Frequency
2,600 Hz

High Frequency Driver
1" x 1.4" (2.6cm x 3.6cm) Folded Motion Transducer with 5.25" x 1.75" (13.3cm x 4.4cm) diaphragm.

Low Frequency Driver
Two 4" (10.2cm) paper cone. Two 4" (10.2cm) paper cone passive radiators.

Components
Custom air core coil inductors. Polyester film capacitors in series and low DF electrolytic capacitors in parallel. Overall system thermal/current protection.

Cabinet
Sealed

Binding Post Inputs
Push style

Finish
Gloss Black

Accessories (included)
Wall mount bracket, vertical table stand, horizontal stands

Accessories (sold separately)
Paintable white grille cover

Weight
6.5 lbs. each (3 kg)

Size (H x W x D)
25.3" x 6.4" x 1.83" (64.2 x 16.2 x 4.75 cm)

Motion[®] SLMXL MARTIN LOGAN

System Frequency Response
100–25,000 Hz ± 3 dB

Dispersion
80° x 80°

Recommended Amplifier Power
20–140 Watts

Maximum Input Power
70 Watts

Sensitivity
94 dB @2.83 volts/meter

Impedance
4 Ohms. Compatible with 4, 6, or 8 Ohm rated amplifiers.

Crossover Frequency
3,100 Hz

High Frequency Driver
1" x 1.4" (2.6cm x 3.6cm) Folded Motion Transducer with 5.25" x 1.75" (13.3cm x 4.4cm) diaphragm.

Low Frequency Driver
Two 4" (10.2cm) paper cone. Four 4" (10.2cm) paper cone passive radiators.

Components
Custom air core coil inductors. Polyester film capacitors in series and low DF electrolytic capacitors in parallel. Overall system thermal/current protection.

Cabinet
Sealed

Binding Post Inputs
Push style

Finish
Gloss Black

Accessories (included)
Wall mount bracket, vertical table stand, horizontal stands

Accessories (sold separately)
Paintable white grille cover

Weight
9 lbs. each (4.1 kg)

Size (H x W x D)
34.1" x 6.4" x 1.89" (86.7 x 16.2 x 4.8 cm)

Motion[®] SLMX3 MARTIN LOGAN

System Frequency Response
120–23,000 Hz ± 3 dB

Dispersion
80° x 80°

Recommended Amplifier Power
20–140 Watts

Maximum Input Power
70 Watts

Sensitivity
93 dB @2.83 volts/meter

Impedance
4 Ohms. Compatible with 4, 6, or 8 Ohm rated amplifiers.

Crossover Frequency
3,000 Hz

High Frequency Driver
Three 1" x 1.4" (2.6cm x 3.6cm) Folded Motion Transducer with 5.25" x 1.75" (13.3cm x 4.4cm) diaphragm.

Low Frequency Driver
Six 4" (10.2cm) paper cone.

Components
Custom air core coil inductors. Polyester film capacitors in series and low DF electrolytic capacitors in parallel. Overall system thermal/current protection.

Cabinet
Sealed

Binding Post Inputs
Push style

Finish
Gloss Black

Accessories (included)
Wall mount bracket, horizontal stands

Accessories (sold separately)
N/A

Weight
13 lbs. each (5.9 kg)

Size (H x W x D)
6.3" x 48" x 2" (16.2 x 122 x 5.1 cm)

Specifications are subject to change without notice.

Motion SLM, SLM XL, and SLM X3 Ultra-Slim Folded Motion Speakers



MASTERPIECE CI

Masterpiece

In-Wall
In-Ceiling
Iconic Masterpiece

Masterpiece CI is the pinnacle of discreet in-wall and in-ceiling loudspeaker design. A tribute to the acoustic achievements of MartinLogan's original iconic masterpiece, our electrostatic speakers.





Statement 40XW

Frequency Response

48–25,000 Hz \pm 3 dB

Tweeter Dispersion (horizontal x vertical)

80° x 52-inch line source

Sensitivity

95 dB @ 2.83 volts/ meter

Impedance

4 ohms. Compatible with 4, 6, or 8 ohm rated amps.

Crossover Frequencies

300, 2700 Hz

High-Frequency Drivers

Sixteen 1.25 x 2.4 inch (3.2 x 6.1 cm) Folded Motion XT Obsidian transducer with 4.5 x 2.75 inch (11.4 x 7 cm) diaphragm.

Mid-Frequency Drivers

Sixteen 3.5-inch (8.9 cm) black unidirectional carbon fiber multi-section cone with Nomex® backer and cast aluminum basket, sealed back chamber format. Concave dust cap.

Low-Frequency Drivers

Eight 6.5-inch (16.5 cm) black unidirectional carbon fiber multi-section cone with Nomex® backer and cast aluminum basket, sealed back chamber format. Concave dust cap.

Binding Post Inputs

Push style (two sets for easy installation)

Components

Custom air core coil inductors, polypropylene film capacitors, and low DF electrolytic capacitors.

Suitable Amplifier Range

50–800 watts

Max Power Handling

400 watts

Weight

150 lb (68.1 kg)

Required Wall Cavity (width)

Minimum: 14.5 inch (368 mm)

Maximum: 16.5 inch (420 mm)

Required Wall Cavity (height, unobstructed)

Minimum: 89 inch (2260 mm)

Required Wall Cavity (depth)

Minimum: 3.5 inch (89 mm)

Enclosure (width x height x depth, excludes padding)

14.3 x 84.2 x 3.4 inch (361 x 2137 x 86 mm)

Grille (height x width)

11.5 x 59.5 inch (292 x 1511 mm)

Installation Kit (included—choose appropriate size)

1/2-inch drywall (PN: 40XWIWK05)

5/8-inch drywall (PN: 40XWIWK0625)



Monument 7XW

Frequency Response

52–25,000 Hz \pm 3 dB

Tweeter Dispersion (horizontal x vertical)

80° x 30°

Sensitivity

95 dB @ 2.83 volts/ meter

Impedance

4 ohms. Compatible with 4, 6, or 8 ohm rated amps.

Crossover Frequencies

200, 3200 Hz

Tweeter Aiming

Rotatable tweeter for horizontal or vertical installations

High-Frequency Driver

1.25 x 2.4 inch (3.2 x 6.1 cm) Folded Motion XT Obsidian transducer with 4.5 x 2.75 inch (11.4 x 7 cm) diaphragm.

Mid-Frequency Driver

6.5-inch (16.5 cm) black unidirectional carbon fiber multisection cone with Nomex® backer and cast aluminum basket, sealed back chamber format. Concave dust cap.

Low-Frequency Drivers

Two 6.5-inch (16.5 cm) black unidirectional carbon fiber multisection cone with Nomex® backer and cast aluminum basket, sealed back chamber format. Concave dust cap.

Passive Radiators

Three 6.5-inch (16.5 cm) unidirectional black carbon fiber cone with Nomex® backer and cast aluminum basket, sealed back chamber format. Concave dust cap.

Binding Post Inputs

Push style (two sets for easy installation)

Components

Custom air core coil inductors, polypropylene film capacitors, and low DF electrolytic capacitors. Thermal/current protection.

Suitable Amplifier Range

20–300 watts

Max Power Handling

150 watts

Weight

44.5 lb (20.2 kg)

Overall Size (height x width x depth)

46.86 x 10.6 x 4.11 inch (1190.2 x 269.2 x 104.3 mm)

Required Opening (including tolerance)

45.57 x 9.29 inch (1157 x 236 mm)

Projection From the Wall Surface

0.31 inch (7.8 mm)

Depth Required Behind the Wall Surface

3.8 inch (96.5 mm)

Optional Accessories

Pre-install bracket (PN: 7XWBRK)



Tribute 5XW

Frequency Response
 71–25,000 Hz \pm 3 dB
Tweeter Dispersion (horizontal x vertical)
 80° x 30°
Sensitivity
 94 dB @ 2.83 volts/ meter
Impedance
 4 ohms. Compatible with 4, 6, or 8 ohm rated amps.
Crossover Frequency
 2250 Hz
Tweeter Aiming
 Rotatable tweeter for horizontal or vertical installations
High-Frequency Driver
 1.25 x 2.4 inch (3.2 x 6.1 cm) Folded Motion XT Obsidian transducer with 4.5 x 2.75 inch (11.4 x 7 cm) diaphragm.
Low-Frequency Drivers
 Two 5.25-inch (13.33 cm) black unidirectional carbon fiber multi-section cone with Nomex® backer and cast aluminum basket, sealed back chamber format. Concave dust cap.
Passive Radiators
 Two 6.5-inch (16.5 cm) black unidirectional carbon fiber multisection cone with Nomex® backer and cast aluminum basket, sealed back chamber format. Concave dust cap.
Binding Post Inputs
 Push style (two sets for easy installation)
Components
 Custom air core coil inductors, polypropylene film capacitors, and low DF electrolytic capacitors. Thermal/current protection.
Suitable Amplifier Range
 20–250 watts
Max Power Handling
 125 watts
Weight
 25.5 lb (11.6 kg)
Overall Size (height x width x depth)
 31.13 x 10.6 x 4.09 inch (790.82 x 269.2 x 103.93 mm)
Required Opening (including tolerance)
 29.82 x 9.29 inch (757 x 236 mm)
Projection From the Wall Surface
 0.31 inch (7.8 mm)
Depth Required Behind the Wall Surface
 3.8 inch (96.5 mm)
Optional Accessories
 Pre-install bracket (PN: 5XWBRK)



Icon 3XW

Frequency Response
 78–25,000 Hz \pm 3 dB
Tweeter Dispersion (horizontal x vertical)
 80° x 30°
Sensitivity
 94 dB @ 2.83 volts/ meter
Impedance
 4 ohms. Compatible with 4, 6, or 8 ohm rated amps.
Crossover Frequency
 2400 Hz
Tweeter Aiming
 Rotatable tweeter for horizontal or vertical installations
High-Frequency Driver
 1.25 x 2.4 inch (3.2 x 6.1 cm) Folded Motion XT Obsidian transducer with 4.5 x 2.75 inch (11.4 x 7 cm) diaphragm.
Low-Frequency Drivers
 Two 5.25-inch (13.33 cm) black unidirectional carbon fiber multi-section cone with Nomex® backer and cast aluminum basket, sealed back chamber format. Concave dust cap.
Binding Post Inputs
 Push style
Components
 Custom air core coil inductors, polypropylene film capacitors, and low DF electrolytic capacitors. Thermal/current protection.
Suitable Amplifier Range
 20–250 watts
Max Power Handling
 125 watts
Weight
 15.5 lb (7 kg)
Overall Size (height x width x depth)
 15.98 x 9.94 x 4.11 inch (405.95 x 252.6 x 104.3 mm)
Required Opening (including tolerance)
 14.66 x 8.64 inch (372 x 219 mm)
Projection From the Wall Surface
 0.31 inch (7.8 mm)
Depth Required Behind the Wall Surface
 3.8 inch (96.5 mm)
Optional Accessories
 Pre-install bracket (PN: 3XWBRK)



Sistine 4XC

Frequency Response

63–25,000 Hz \pm 3 dB

Tweeter Dispersion (horizontal x vertical)

30° x 80°

Sensitivity

92 dB @ 2.83 volts/ meter

Impedance

4 ohms. Compatible with 4, 6, or 8 ohm rated amps.

Crossover Frequencies

400, 2250 Hz

High-Frequency Driver

1.25 x 2.4 inch (3.2 x 6.1 cm) Folded Motion XT Obsidian transducer with 4.5 x 2.75 inch (11.4 x 7 cm) diaphragm.

Mid-Frequency Drivers

Two 3.5-inch (8.9 cm) black unidirectional carbon fiber multisection cone with Nomex® backer and cast aluminum basket, sealed back chamber format. Concave dust cap.

Low-Frequency Driver

8-inch (20.3 cm) black unidirectional carbon fiber multisection cone with Nomex® backer and cast aluminum basket, sealed back chamber format. Concave dust cap.

Controls

Tweeter Level (dB): +2, -2, 0

Position: Front R/Rear L, Front L/Rear R, For center choose either

Binding Post Inputs

Push style

Components

Custom air core coil inductors, polypropylene film capacitors, and low DF electrolytic capacitors. Thermal/current protection.

Suitable Amplifier Range

20–300 watts

Max Power Handling

150 watts

Weight

13.5 lb (6.1 kg)

Overall Size (diameter x depth)

12.8 x 7.5 inch (325 x 190 mm)

Required Opening (including tolerance)

11.46 inch (291 mm)

Projection From the Wall Surface

0.26 inch (6.6 mm)

Depth Required Behind the Wall Surface

7.2 inch (184 mm)

Optional Accessories

Pre-install bracket (PN: C8HTBRK)

Square grille (PN: C8HTSQ)

Motion® CI

Motion CI

MC4, MC6, MC6-HT
MC8, MW4-LCR, MW6

This innovative piece of audio technology provides incredible detail, precise clarity, clean output, and high efficiency in a small but mighty package. Pairing this tweeter with lightweight woven fibreglass woofers means that Motion CI delivers a clean and balanced sound that is perfectly suited for any application.





MC4

System Frequency Response
90 - 25,000 Hz ± 3 dB

Aiming
N/A

Sensitivity
90dB @2.83V/ 1 meter

Impedance
Compatible with 8 ohms

Crossover Frequency
2,230 Hz

High Frequency Driver
FMT Transducer

1" x 1.4"
(2.6cm x 3.6cm)
Opening

5.25" x 1.75"
(13.3cm x 4.4cm)
Diaphragm

Low Frequency Driver
4" (10.16cm) black
fiberglass cone

Binding Post Inputs
Push style accommodates
wire up to 12AWG

Suitable Amplifier Range
50–120 Watts

Maximum Power Handling
60 Watts

Weight
2.02 lbs.
(0.9 kg) each

Overall Size (dia. x depth)
5.63" x 5.65"
(14.3cm x 14.3cm)

Required opening
4.89" (12.41cm)
diameter

Projection from wall
0.26" (0.65cm)

Depth required behind wall
5.50" (13.9cm)



MC6

System Frequency Response
62 - 25,000 Hz ± 3 dB

Aiming
N/A

Sensitivity
90dB @2.83V/ 1 meter

Impedance
Compatible with 8 ohms

Crossover Frequency
2,570 Hz

High Frequency Driver
FMT Transducer

1" x 1.4"
(2.6cm x 3.6cm)
Opening

5.25" x 1.75"
(13.3cm x 4.4cm)
Diaphragm

Low Frequency Driver
6.5" (16.51cm) black
fiberglass cone

Binding Post Inputs
Push style accommodates
wire up to 12AWG

Suitable Amplifier Range
50–150 Watts

Maximum Power Handling
75 Watts

Weight
5.1 lbs.
(2.31 kg) each

Overall Size (dia. x depth)
8.64" x 4.57"
(21.94cm x 11.61cm)

Required opening
7.65" (19.43cm)
diameter

Projection from wall
0.31" (0.77cm)

Depth required behind wall
4.43" (11.26cm)



MC6-HT

System Frequency Response
62 - 25,000 Hz ± 3 dB

Aiming
N/A

Sensitivity
90dB @2.83V/ 1 meter

Impedance
Compatible with 8 ohms

Crossover Frequency
2,570 Hz

High Frequency Driver
FMT Transducer

1" x 1.4"
(2.6cm x 3.6cm)
Opening

5.25" x 1.75"
(13.3cm x 4.4cm)
Diaphragm

Low Frequency Driver
6.5" (16.51cm) black
fiberglass cone

Binding Post Inputs
Push style accommodates
wire up to 12AWG

Suitable Amplifier Range
50–150 Watts

Maximum Power Handling
75 Watts

Weight
6.08 lbs.
(2.75 kg) each

Overall Size (dia. x depth)
11.30" x 6.88"
(28.7cm x 17.48cm)

Required opening
10.23" (25.9cm)
diameter

Projection from wall
0.35" (0.89cm)

Depth required behind wall
6.77" (17.18cm)



MC8

System Frequency Response
44 - 25,000 Hz ± 3 dB

Aiming
N/A

Sensitivity
91dB @2.83V/ 1 meter

Impedance
Compatible with 8 ohms

Crossover Frequency
2,220 Hz

High Frequency Driver
FMT Transducer

1" x 1.4"
(2.6cm x 3.6cm)
Opening

5.25" x 1.75"
(13.3cm x 4.4cm)
Diaphragm

Low Frequency Driver
8" (20.32cm) black
fiberglass cone

Binding Post Inputs
Push style accommodates
wire up to 12AWG

Suitable Amplifier Range
50–200 Watts

Maximum Power Handling
100 Watts

Weight
6 lbs. each
(2.72 kg)

Overall Size (dia. x depth)
10.35" x 4.95"
(26.28cm x 12.57cm)

Required opening
9.25" (23.5cm)
diameter

Projection from wall
0.33" (0.83cm)

Depth required behind wall
4.81" (12.22cm)



MW6

System Frequency Response
62 - 25,000 Hz ± 3 dB

Aiming
N/A

Sensitivity
90dB @2.83V/ 1 meter

Impedance
Compatible with 8 ohms

Crossover Frequency
2,920 Hz

High Frequency Driver
FMT Transducer

1" x 1.4"
(2.6cm x 3.6cm)
Opening

5.25" x 1.75"
(13.3cm x 4.4cm)
Diaphragm

Low Frequency Driver
6.5" (16.51cm) black
fiberglass cone

Binding Post Inputs
Push style accommodates
wire up to 12AWG

Suitable Amplifier Range
50–120 Watts

Maximum Power Handling
60 Watts

Weight
6 lbs. each
(2.72 kg)

Overall Size (l x w x depth)
8.04" x 11.07" x 4.16"
(20.43 x 28.13 x 10.55cm)

Required opening
6.97" x 11.07"
(17.70cm x 28.13cm)

Projection from wall
0.31" (0.79cm)

Depth required behind wall
4.04" (10.25cm)



MW4-LCR

System Frequency Response
78 - 25,000 Hz ± 3 dB

Aiming
N/A

Sensitivity
93dB @2.83V/ 1 meter

Impedance
Compatible with 8 ohms

Crossover Frequency
2,800 Hz

High Frequency Driver
FMT Transducer

1" x 1.4"
(2.6cm x 3.6cm)
Opening

5.25" x 1.75"
(13.3cm x 4.4cm)
Diaphragm

Low Frequency Driver
4" (10.16 cm) black
fiberglass cone

Binding Post Inputs
Push style accommodates
wire up to 12AWG

Suitable Amplifier Range
50–200 Watts

Maximum Power Handling
100 Watts

Weight
6.02 lbs.
(2.73 kg) each

Overall Size (l x w x depth)
12.74" x 6.13" x 2.69"
(32.36 x 15.56 x 6.82cm)

Required opening
11.87" x 5.25"
(30.14cm x 13.34cm)

Projection from wall
0.28" (0.7cm)

Depth required behind wall
2.57" (6.52cm)



Specifications are subject to change without notice.

Motion® CI Front, Center, and Surround Speakers


MARTIN LOGAN

Motion[®] XT CI

MARTIN LOGAN

Folded Motion[®] In-Wall and In-Ceiling Speakers

XTC8, XTC8-HT, XTW6
XTW5-LCR, XTW6-LCR



The MartinLogan Motion XT CI series takes performance to the next level over Motion CI.

The Folded Motion XT tweeter gives each model in the Motion XT series even more of the clarity, output and efficiency that the standard size FMT is famous for. With Motion XT, we wanted to increase all aspects of performance over the Motion series, so we didn't just stop at the tweeter. All Motion XT models feature woven Kevlar woofers for increased rigidity and lightness as well as a special Nomex layer on the back side of the woofer material which increases clarity and realism by reducing resonance and ringing. In addition to the larger tweeter, and lighter, stronger woofers, MartinLogan's design and engineering team has fitted the Motion XT series with a more substantial chassis to strengthen the speaker and provide a more accurate sound, similar to a better cabinet on a traditional speaker. The Nomex layer and the chassis are not something you can see after installation, but it matters to the performance of the speaker, so it matters to us. With Motion XT CI, the difference is in the details.

Motion[®] XT CI Front, Center, and Surround Speakers





XTC8

Frequency Response
51 - 25,000 Hz \pm 3dB

Tweeter Controlled Dispersion
30 x 80 degrees

Sensitivity (anechoic)
91dB @2.83V/ 1 meter

Impedance
4 ohms. Compatible with 8 ohms

Crossover Frequency
2,270 Hz

Crossover Type
2 way

Driver Configuration
1 x 1.27" x 2.75" FMT,
1 x 8" Woofers

High Frequency Driver
FMT Transducer
1.27" x 2.4"
(3.22cm x 6.09cm)
Opening
4.5" x 2.75"
(11.43cm x 6.98cm)
Diaphragm

Woofer Specifications
One 8" (20.32 cm) cast aluminum basket, black Kevlar with Nomex backer cone, Open back chamber format. Concave dust cap.

Connectors
Push style

Components
Custom air core coil inductors, polypropylene film capacitors in series and low DF electrolytic capacitors FMT thermal/current protection.

Cabinet Material
Black w/ White Paintable Grill

Suggested Amplifier Power
Range 50–300 Watts

Maximum Power Handling
150 Watts

Weight
7.9 lbs. (3.6 kg) each

Overall Size (dia. x depth)
10.35" x 5.30"
(26.30 x 13.46cm)

Required Opening
9.25" (9.5cm) diameter

Projection From Wall
0.33" (23.5cm)

Depth Required Behind Wall
5.50" (13.97cm)



XTC8-HT

Frequency Response
51 - 25,000 Hz \pm 3dB

Tweeter Controlled Dispersion
30 x 80 degrees

Sensitivity (anechoic)
91dB @2.83V/ 1 meter

Impedance
4 ohms. Compatible with 8 ohms

Crossover Frequency
2,000 Hz

Crossover Type
2 way

Driver Configuration
1 x 1.27" x 2.75" FMT,
1 x 8" Woofers

High Frequency Driver
FMT Transducer
1.27" x 2.4"
(3.22cm x 6.09cm)
Opening
4.5" x 2.75"
(11.43cm x 6.98cm)
Diaphragm

Woofer Specifications
One 8" (20.32 cm) cast aluminum basket, black Kevlar with Nomex backer cone, Open back chamber format. Concave dust cap.

Connectors
Push style

Components
Custom air core coil inductors, polypropylene film capacitors in series and low DF electrolytic capacitors FMT thermal/current protection.

Cabinet Material
Black w/ White Paintable Grill

Suggested Amplifier Power
Range 50–300 Watts

Maximum Power Handling
150 Watts

Weight
9.3 lbs. (4.2 kg) each

Overall Size (dia. x depth)
12.68" x 7.15"
(32.2 x 18.14cm)

Required Opening
11.5" (29.1cm) diameter

Projection From Wall
0.26" (0.65cm)

Depth Required Behind Wall
7.03" (17.84cm)



XTW6

Frequency Response
56 - 25,000 Hz \pm 3dB

Tweeter Controlled Dispersion
80 x 30 degrees

Sensitivity (anechoic)
91dB @2.83V/ 1 meter

Impedance
4 ohms. Compatible with 8 ohms

Crossover Frequency
2,460 Hz

Crossover Type
2 way

Driver Configuration
1 x 1.27" x 2.75" FMT,
1 x 6.5" Woofers

High Frequency Driver
FMT Transducer
1.27" x 2.4"
(3.22cm x 6.09cm)
Opening
4.5" x 2.75"
(11.43cm x 6.98cm)
Diaphragm

Woofer Specifications
One 6.5" (16.51 cm) cast aluminum basket, black Kevlar with Nomex backer cone, Open back chamber format. Concave dust cap.

Connectors
Push style

Components
Custom air core coil inductors, polyester film capacitors in series and low DF electrolytic capacitors FMT thermal/current protection.

Cabinet Material
Black w/ White Paintable Grill

Suggested Amplifier Power
Range 50–200 Watts

Maximum Power Handling
100 Watts

Weight
7.1 lbs. (3.2 kg) each

Overall Size (l x w x depth)
11.06" x 8.03" x 3.55"
(28.1 x 20.4 x 9.02cm)

Required Opening
7" x 10.13" (17.9 x 25.9cm)

Projection From Wall
0.31" (0.79cm)

Depth Required Behind Wall
3.43" (8.72cm)



XTW5-LCR

Frequency Response
61 - 25,000 Hz \pm 3dB

Tweeter Controlled Dispersion
80 x 30 degrees

Sensitivity (anechoic)
92dB @2.83V/ 1 meter

Impedance
4 ohms. Compatible with 8 ohms

Crossover Frequency
2,180 Hz

Crossover Type
2 way

Driver Configuration
1 x 1.27" x 2.75" FMT,
2 x 5.25" Woofers

High Frequency Driver
FMT Transducer
1.27" x 2.4"
(3.22cm x 6.09cm)
Opening
4.5" x 2.75"
(11.43cm x 6.98cm)
Diaphragm

Woofer Specifications
Two 5.25" (13.33 cm) cast aluminum basket, black Kevlar with Nomex backer cone, Open back chamber format. Concave dust cap.

Connectors
Push style

Components
Custom air core coil inductors, polyester film capacitors in series and low DF electrolytic capacitors FMT thermal/current protection.

Cabinet Material
Black w/ White Paintable Grill

Suggested Amplifier Power
Range 50–250 Watts

Maximum Power Handling
125 Watts

Weight
9.8 lbs. (4.4 kg) each

Overall Size (l x w x depth)
7.87" x 15.79" x 3.32"
(20 x 40.1 x 8.43cm)

Required Opening
14.5" x 6.5"
(36.8 x 16.5cm)

Projection From Wall
0.12" (0.3cm)

Depth Required Behind Wall
3.20" (8.13cm)



XTW6-LCR

Frequency Response
44 - 25,000 Hz \pm 3dB

Tweeter Controlled Dispersion
80 x 30 degrees

Sensitivity (anechoic)
93dB @2.83V/ 1 meter

Impedance
4 ohms. Compatible with 8 ohms

Crossover Frequency
260, 2470 Hz

Crossover Type
3 way

Driver Configuration
1 x 1.27" x 2.75" FMT,
1 x 6.5" midrange,
2 x 6.5" Woofers

High Frequency Driver
FMT Transducer
1.27" x 2.4"
(3.22cm x 6.09cm)
Opening
4.5" x 2.75"
(11.43cm x 6.98cm)
Diaphragm

Woofer Specifications
Two 6.5" (16.51 cm) cast aluminum basket, black Kevlar with Nomex backer cone, Open back chamber format. Concave dust cap.

Midrange Specifications
One 6.5" (16.51 cm) cast aluminum basket, black Kevlar with Nomex backer cone, Sealed back chamber format. Concave dust cap.

Connectors
Push style

Components
Custom air core coil inductors, polyester film capacitors in series and low DF electrolytic capacitors FMT thermal/current protection.

Cabinet Material
Black w/ White Paintable Grill

Suggested Amplifier Power
Range 50–300 Watts

Maximum Power Handling
150 Watts

Weight
18.9 lbs. each (8.6 kg)

Overall Size (l x w x depth)
28" x 7.69" x 3.67"
(71.12 x 19.5 x 9.31cm)

Required Opening
6.64" x 27"
(16.9 x 68.5cm)

Projection From Wall
0.13" (0.32cm)

Depth Required Behind Wall
3.54" (8.99cm)

Specifications are subject to change without notice.

Motion® XT CI Front, Center, and Surround Speakers



INSTALLER

Installer

In-Wall
In-Ceiling
Outdoor

The Installer Series™ by MartinLogan is a line of affordable high-performance products, featuring custom installation solutions for in-wall, in-ceiling, and outdoor applications.





IC3

IC3-AW

IC6

IC6-ST

Application	In-ceiling	In-ceiling, All-Weather	In-ceiling	In-ceiling, Stereo
System Frequency Response ($\pm 3\text{dB}$)	100–20,000 Hz	100–20,000 Hz	55–20,000 Hz	52–20,000 Hz
Aiming	—	—	—	Rotate speaker
Sensitivity	88dB	88dB	89dB	89dB
Impedance	Compatible with 8 ohms	Compatible with 8 ohms	Compatible with 8 ohms	Compatible with 4 ohms mono / 8 ohms stereo
Crossover Frequency	1,800 Hz	1,800 Hz	3,000 Hz	3,000 Hz
High-Frequency Driver	0.75" (1.9cm) titanium dome	0.75" (1.9cm) titanium dome	0.75" (1.9cm) titanium dome	Two 0.75" (1.9cm) titanium domes
Low-Frequency Driver	3.5" (8.9cm) mineral-filled poly cone	3.5" (8.9cm) mineral-filled poly cone	6.5" (16.5cm) mineral-filled poly cone	Dual voice-coil 6.5" (16.5cm) mineral- filled poly cone
Binding Post Inputs	Push style accommodates wire up to 12AWG	Push style accommodates wire up to 12AWG	Push style accommodates wire up to 12AWG	Push style accommodates wire up to 12AWG
Recommended Amp Range	15–100 Watts	15–100 Watts	15–80 Watts	15–80 Watts mono 15–40 Watts stereo
Ingress Protection Rating	—	IP54	—	—
Weight	1.2 lbs. (0.5 kg)	1.2 lbs. (0.5 kg)	3.5 lbs. (1.6 kg)	4 lbs. (1.8 kg)
Overall Size	4.1" x 4.17" (10.4 x 10.6cm)	4.1" x 4.17" (10.4 x 10.6cm)	8.7" x 3.46" (22.1 x 8.8cm)	8.7" x 3.46" (22.1 x 8.8cm)
Required opening	3-3/4" (9.5cm) dia.	3-3/4" (9.5cm) dia.	7-3/4" (19.6cm) dia.	7-3/4" (19.6cm) dia.
Projection from wall surface	0.25" (0.6cm)	0.25" (0.6cm)	0.31" (0.8cm)	0.31" (0.8cm)
Depth required behind wall surface	3.92" (9.9cm)	3.92" (9.9cm)	3.18" (8.1cm)	3.17" (8cm)
Square Grille (sold separately)	C3 Square Grille	—	C6 & C6-ST Square Grille	C6 & C6-ST Square Grille
Pre-install Bracket (sold separately)	C3 & C3-AW Bracket	C3 & C3-AW Bracket	C6 & C6-ST Bracket	C6 & C6-ST Bracket



IC6-HT

IC8

IC8-AW

IW5-LCR

IW6

In-ceiling, Home Theater	In-ceiling	In-ceiling, All-Weather	In-wall, LCR	In-wall
55–20,000 Hz	45–20,000 Hz	45–20,000 Hz	60–20,000 Hz	55–20,000 kHz
Rotate speaker	—	—	—	—
89dB	90dB	90dB	89dB	89dB
Compatible with 8 ohms	Compatible with 8 ohms	Compatible with 8 ohms	Compatible with 8 ohms	Compatible with 8 ohms
2,500 Hz	2,500 Hz	2,500 Hz	2,500 Hz	2,500 Hz
1" (2.5cm) titanium dome	1" (2.5cm) titanium dome	1" (2.5cm) titanium dome	0.75" (1.9cm) titanium dome	0.75" (1.9cm) titanium dome
6.5" (16.5cm) mineral-filled poly cones	8" (20.3cm) mineral-filled poly cone	8" (20.3cm) mineral-filled poly cone	Two 5.5" (14cm) mineral-filled poly cones	6.5" (16.5cm) mineral-filled poly cone
Push style accommodates wire up to 12AWG	Push style accommodates wire up to 12AWG	Push style accommodates wire up to 12AWG	Push style accommodates wire up to 12AWG	Push style accommodates wire up to 12AWG
15–80 Watts	15–90 Watts	15–90 Watts	15–100 Watts	15–90 Watts
—	—	IP54	—	—
5.3 lbs. (2.4 kg)	4.4 lbs. (2 kg)	4.4 lbs. (2 kg)	5.9 lbs. (2.7 kg)	3.5 lbs. (1.6 kg)
11.38" x 5.28" (28.9 x 13.4cm)	10.4" x 3.98" (26.4 x 10.1cm)	10.4" x 3.98" (26.4 x 10.1cm)	9.3" x 12.6" x 3.5" (23.5 x 32.1 x 8.8cm)	11.15" x 8.12" x 3.47" (28.3 x 20.6 x 8.8cm)
10-3/8" (26.3cm) dia.	9-3/8" (23.8cm) dia.	9-3/8" (23.8cm) dia.	8-1/4" x 11-5/8" (20.9 x 29.5cm)	10-1/8" x 7-1/16" (25.7 x 18cm)
0.25" (0.7cm)	0.33" (0.8cm)	0.33" (0.8cm)	0.31" (0.8cm)	0.31" (0.8cm)
4.95" (12.6cm)	3.65" (9.3cm)	3.65" (9.3cm)	3.17" (8.1cm)	3.17" (8.1cm)
C6-HT Square Grille	C8 Square Grille	—	—	—
C6-HT Bracket	C8 & C8-AW Bracket	C8 & C8-AW Bracket	W5-LCR (IW5-LCR) Bracket	W6 Bracket

ML-45AW

All weather speakers

SPECIFICATIONS

Frequency Response

90–20,000 Hz ± 2 dB

Crossover Frequency

2,300 Hz

Sensitivity

88dB

Impedance

Compatible with 8 ohms

Low-Frequency Extension*

65 Hz (DIN)

High-Frequency Driver

1" (2.5cm) titanium dome

Low-Frequency Driver

4-1/2" (11.5cm) mineral-filled polypropylene cone

Binding Post Inputs

5-way binding posts accommodate wire up to 5AWG

Suitable Amplifier Range

15–80 Watts

Maximum Power Handling**

50 Watts

Weight

3.4 lbs. each (1.55 kg)

Size (H x W x D)

7-9/16" x 5-5/8" x 5-15/16"

(19.2 x 14.3 x 15.1cm)

*DIN 45 500. Indicates -3 dB in a typical listening room.

**With typical program source, provided the amplifier clips no more than 10% of the time.

Specifications are subject to change without notice.

Colors Options:

Black



White



Installer Series

ML-55AW

All weather speakers

SPECIFICATIONS

Frequency Response

85–20,000 Hz ± 2 dB

Crossover Frequency

2,300 Hz

Sensitivity

90dB

Aiming

Swivels on U-Bracket

Impedance

Compatible with 8 ohms

Low-Frequency Extension*

60 Hz (DIN)

High-Frequency Driver

1" (2.5cm) titanium dome

Low-Frequency Driver

5-1/2" (14cm) mineral-filled polypropylene cone

Binding Post Inputs

5-way binding posts accommodate wire up to 5AWG

Suitable Amplifier Range

15–90 Watts

Maximum Power Handling**

60 Watts

Weight

6.75 lbs. each (3.05 kg)

Size (H x W x D)

9-11/16" x 7" x 7-5/8"

(24.6 x 17.8 x 19.4cm)

*DIN 45 500. Indicates -3 dB in a typical listening room.

**With typical program source, provided the amplifier clips no more than 10% of the time.

Specifications are subject to change without notice.



ML-65AW

All weather speakers

SPECIFICATIONS

Frequency Response

80–20,000 Hz ± 2 dB

Crossover Frequency

2,300 Hz

Sensitivity

91 dB

Aiming

Swivels on U-Bracket

Impedance

Compatible with 8 ohms

Low-Frequency Extension*

55 Hz (DIN)

High-Frequency Driver

1" (2.5cm) titanium dome

Low-Frequency Driver

6-1/2" (16.5cm) mineral-filled polypropylene cone

Binding Post Inputs

5-way binding posts accommodate wire up to 5AWG

Suitable Amplifier Range

15–100 Watts

Maximum Power Handling**

70 Watts

Weight

8.8 lbs. each (4 kg)

Size (H x W x D)

11" x 7-1/2" x 7-15/16"
(28 x 19 x 20.2cm)

*DIN 45 500. Indicates -3 dB in a typical listening room.

**With typical program source, provided the amplifier clips no more than 10% of the time.

Specifications are subject to change without notice.

Colors Options:



Black



White



Installer Series

ML-75AW

All weather speakers

SPECIFICATIONS

Frequency Response

75–20,000 Hz ± 2 dB

Crossover Frequency

2,300 Hz

Sensitivity

93 dB

Aiming

Swivels on U-Bracket

Impedance

Compatible with 8 ohms

Low-Frequency Extension*

50 Hz (DIN)

High-Frequency Driver

1" (2.5cm) titanium dome

Low-Frequency Driver

7-1/2" (19cm) mineral-filled polypropylene cone

Binding Post Inputs

5-way binding posts accommodate wire up to 5AWG

Suitable Amplifier Range

15–110 Watts

Maximum Power Handling**

80 Watts

Weight

10.6 lbs. each (4.8 kg)

Size (H x W x D)

12-1/2" x 8-13/16" x 9-1/8"
(31.7 x 22.4 x 23.2cm)

*DIN 45 500. Indicates -3 dB in a typical listening room.

**With typical program source, provided the amplifier clips no more than 10% of the time.

Specifications are subject to change without notice.



ML-65R (stereo)

Landscape speakers

SPECIFICATIONS

Frequency Response

66–20,000 kHz ± 2 dB

Crossover Frequency

3,000 Hz

Sensitivity

89dB

Impedance

Stereo Mode - Compatible with 8 ohms

Mono Mode - Compatible with 4 ohms

Low-Frequency Extension*

44 Hz (DIN)

High-Frequency Drivers

Two 1" (2.5cm) titanium domes

Low-Frequency Driver

6-1/2" (16.5cm) mineral-filled polypropylene cone with dual voice coil.

Inputs

Two pair pre-installed wires

Suitable Amplifier Range

Stereo Mode - 15–100 Watts

Mono Mode - 15–55 Watts

Maximum Power Handling**

Stereo Mode - 70 Watts

Mono Mode - 35 Watts

Weight

12.1 lbs. each (5.5 kg)

Size (H x W x D)

12-3/16" x 11-1/8" x 10-5/8"

(31 x 28.2 x 27cm)

*DIN 45 500. Indicates -3 dB in a typical listening room.

**With typical program source, provided the amplifier clips no more than 10% of the time.

Specifications are subject to change without notice.

Color:  Grey Stone

ML-75R (stereo)

Landscape speakers

SPECIFICATIONS

Frequency Response

63–20,000 kHz ± 2 dB

Crossover Frequency

2,500 Hz

Sensitivity

90dB

Impedance

Stereo Mode - Compatible with 8 ohms

Mono Mode - Compatible with 4 ohms

Low-Frequency Extension*

42 Hz (DIN)

High-Frequency Drivers

Two 1" (2.5cm) titanium domes

Low-Frequency Driver

7-1/2" (19cm) mineral-filled polypropylene cone with dual voice coil.

Inputs

Two pair pre-installed wires

Suitable Amplifier Range

Stereo Mode - 15–120 Watts

Mono Mode - 15–60 Watts

Maximum Power Handling**

Stereo Mode - 80 Watts

Mono Mode - 40 Watts

Weight

17 lbs. each (7.7 kg)

Size (H x W x D)

15-3/16" x 13-3/8" x 13"

(38.5 x 34 x 33cm)

*DIN 45 500. Indicates -3 dB in a typical listening room.

**With typical program source, provided the amplifier clips no more than 10% of the time.

Specifications are subject to change without notice.



Installer Series


MARTIN LOGAN®



OUTDOOR LIVING SERIES

SUPERB MARTINLOGAN SOUND IN THE GREAT OUTDOORS.

Landscaping and outdoor living spaces are about more than just adding beauty to your home. They create a distinctive space that brings people together in an inviting, comfortable environment. They are a place to share exceptional food and drinks with your family and closest friends. As much as carefully chosen adornments enhance the visual appeal and enjoyment of the scenery, compelling music from high-performance speakers enhances the ambience. MartinLogan's Outdoor Living system brings unmatched audio quality to the music in your outdoor living space. Designed to maximize installation flexibility while offering scalable system solutions, MartinLogan's Outdoor Living Series includes high-performance weatherproof satellite speakers with 4- and 6-inch woofers, subterranean subwoofers with 10- and 12-inch woofers, and a selection of mounting accessories. One bundled package, the 4.1 Outdoor Living System, makes getting started with a world-class outdoor audio experience simple.

QUICK SPECS

- Dark Bronze finish
- All-weather design

SATELLITE QUICK SPECS

- Aluminum tweeters and poly cone woofers
- 70V / 100V / 8-Ohm
- ABS cabinet with high UV-stability

SUBWOOFER QUICK SPECS

- Poly cone woofers
- 8-Ohm
- Subterranean design





OUTDOOR SAT 40

System Frequency Response
120–20,000 Hz ± 3 dB

Recommended Amplifier Power
15–120 Watts

Maximum Input Power
60 Watts

Sensitivity (room / anechoic)
87 dB / 83 dB

Impedance
Compatible with 8 ohms

Crossover Frequency
2,500 Hz

High Frequency Driver
0.75" (1.9cm) aluminum dome, ferro-fluid cooled tweeter

Mid-Range Driver/Woofer
4" (10cm) mineral filled poly cone

Controls
Input: 8-Ohm, 70 Volt (3.75W, 7.5W, 15W, or 30W), 100 Volt (7.5W, 15W, or 30W)

Finish
Dark Bronze

Weight
5 lbs. each (2.3 kg)

Size (H x W x D, without stem)
6" x 6" x 10" (15.2 x 15.2 x 25.4 cm)

Size (H x W x D, with stem)
10.6" x 6" x 10" (27 x 15.3 x 25.4 cm)

OUTDOOR SAT 60

System Frequency Response
90–20,000 Hz ± 3 dB

Recommended Amplifier Power
15–120 Watts

Maximum Input Power
80 Watts

Sensitivity (room / anechoic)
92 dB / 88 dB

Impedance
Compatible with 8 ohms

Crossover Frequency
2,500 Hz

High Frequency Driver
0.75" (1.9cm) aluminum dome, ferro-fluid cooled tweeter

Mid-Range Driver/Woofer
6" (15.25cm) mineral filled poly cone

Controls
Input: 8-Ohm, 70 Volt (3.75W, 7.5W, 15W, or 30W), 100 Volt (7.5W, 15W, or 30W)

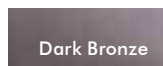
Finish
Dark Bronze

Weight
6.5 lbs. each (3 kg)

Size (H x W x D, without stem)
8.3" x 8.3" x 11.3" (21 x 21 x 28.6 cm)

Size (H x W x D, with stem)
12.8" x 8.3" x 11.3" (32.5 x 21 x 28.6 cm)

Finish Options:



Recommended Amplifier:

Optimized for use with the Crown CDi 1000 amplifier which can be programmed with customized DSP settings. 8 ohm amplifiers can also be used.

Satellite Mounting Accessories (sold separately):



Surface Mount Bracket

12-inch Ground Stake



Burial Conduit Box



DYNAMO™ OUTDOOR SUB 100

System Frequency Response
33–135 Hz ± 3 dB

Recommended Amplifier Power
15–1,000 Watts

Maximum Input Power
400 Watts

Sensitivity (room / anechoic)
88 dB / 82 dB

Impedance
8 ohms

Woofer
10" (25.4cm) mineral filled poly cone, 2" (5cm) high-power oversized voice coil, 4-layer on fiberglass bobbin

Finish
Dark Bronze (canopy)

Weight
48 lbs. each (21.8 kg)

Size (H x W x D, barrel only)
9.8" x 15.8" x 15.8" (24.9 x 40 x 40 cm)

Size (H x W x D, canopy)
6.1" x 10.3" x 10.3" (15.6 x 26.1 x 26.1 cm)

Size (H x W x D, barrel, pipe, and canopy)
23.6" x 15.8" x 18" (60 x 40 x 45.7 cm)

DYNAMO™ OUTDOOR SUB 120

System Frequency Response
28–120 Hz ± 3 dB

Recommended Amplifier Power
15–1,000 Watts

Maximum Input Power
500 Watts

Sensitivity (room / anechoic)
91 dB / 85 dB

Impedance
8 ohms

Woofer
12" (30.5cm) mineral filled poly cone, 2.5" (6.4cm) high-power oversized voice coil, 4-layer on fiberglass bobbin

Finish
Dark Bronze (canopy)

Weight
62 lbs. each (28.1 kg)

Size (H x W x D, barrel only)
15.8" x 15.8" x 20.1" (40 x 40 x 51 cm)

Size (H x W x D, canopy)
8.6" x 14.3" x 14.3" (21.8 x 36.2 x 36.2 cm)

Size (H x W x D, barrel, pipe, and canopy)
34.5" x 15.8" x 34.8" (87.6 x 40 x 88.3 cm)

Specifications are subject to change without notice.

4.1 OUTDOOR LIVING SYSTEM

Contains
4x Outdoor Sat 40
1x Dynamo Outdoor Sub 100
4x 12-inch Ground Stake



OUTDOOR LIVING™ FOUNDATION MUSIC SYSTEM

Technical Specifications

Design

Crossover

High Frequency Driver

Bass/Midrange Driver

Bass Driver

Low Frequency Extension

Frequency Response (0-15 degree window)

Sensitivity — Outdoor

Sensitivity — Anechoic

Suitable Amplifier Power Range

Impedance

Dimensions (diameter x depth)

Weight

Finish

Satellite Speakers

2-driver, 2-way outdoor satellite, acoustic suspension

100Hz High pass; 2nd-order electro-acoustic at 3 kHz

3/4" (1.9cm) X-PAL™ dome, ferro-fluid damped / cooled, Reduced Edge Diffraction (RED™) Technology, Perforated Phase-Aligning (PPA™) Tweeter Lens, die-cast low diffraction baffle/heat sink

4" (10 cm) mineral-filled polypropylene cone, Nitrile-Butadiene Rubber (NBR) surround

N/A

90 Hz

± 4 dB from 100 Hz - 20 kHz (design axis 45 degrees)

76 dB

72 dB

15 – 400 W (system, per channel)

Minimum 4ohms mono

5.32" (diameter) x 8.69" (depth)
(13.5 cm x 22 cm)

3.0 lbs. (1.4 kg)

Dark Satin Brown

Inground Subwoofer

Inground subwoofer with single high excursion driver

200Hz Low pass

N/A

N/A

8" (20.3 cm) woofer with dual 8ohm voice coils. Water resistant materials and design.

45 Hz

±4 dB from 47 Hz - 170 Hz

89 dB

85 dB

15 – 400 W (system, per channel)

Minimum 4ohms mono

22" (including canopy) x 13.8"
(56 cm x 35 cm)

17.7 lbs (8kg)

Dark Satin Brown (canopy only)



IP54 Rating on Satellite Speakers

Limited protection against dust ingress (no harmful deposit) and protection against splash water from any direction.



IP58 Rating on In-Ground Sub

Limited protection against dust ingress (no harmful deposit) and protection against long, durable periods of immersion in water.

System & Installation

You won't need special amplifiers to power Outdoor Living Foundation. If you already have a powered second zone-enabled AV receiver, or other stereo amplifier, then you have the necessary electronics. Of course, you can step up to a dedicated power amp for even better performance.

Outdoor Living Foundation is easy to install with stakes and speaker housings that assemble without tools. All that's needed to finish the job is a shovel, a pair of wire strippers and speaker cable.



**OUTDOOR
LIVING™
FOUNDATION**
MUSIC SYSTEM

SUB 8

HIGH-PERFORMANCE
IN-GROUND
SUBWOOFER



Upgrade your outdoor sound experience with the Foundation Sub 8 In-Ground Subwoofer. Perfect for year-round use in gardens, patios, and other outdoor living spaces.

The Foundation Sub 8 In-Ground Subwoofer is a powerful 8" subwoofer designed to take your outdoor audio experience to the next level. As a direct-burial subwoofer, it perfectly complements MartinLogan's range of high-performance outdoor audio solutions. With a robust 200-watt (RMS) power handling capability, this subwoofer delivers earth-shaking bass response that enhances your existing outdoor speaker system.

IP Rated 58



Limited protection against dust ingress (no harmful deposit) and protection against long periods of immersion in water.

High-Performance In-Ground Subwoofer


MARTIN LOGAN



Elevate Your Outdoor Audio Experience with the Foundation Sub 8

The dual 8-ohm voice coil design of the Foundation Sub 8 provides plenty of installation flexibility, making it an ideal addition to any MartinLogan Installer Series or Outdoor Living Series outdoor audio solution. When paired with our MP500 Amplifier, the Foundation Sub 8 is also the perfect way to add a second subwoofer to your MartinLogan Outdoor Living Foundation 8.1 System.

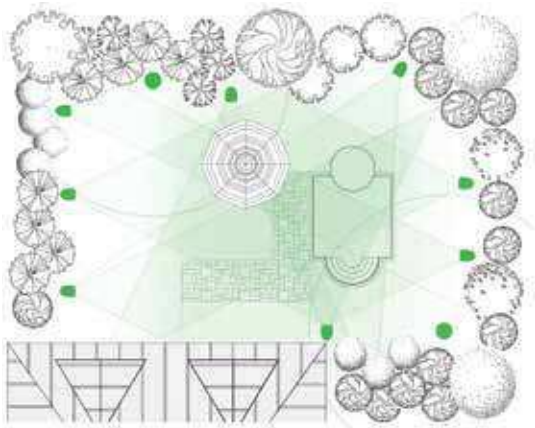


Outdoor Living Foundation 8.1 System and MP500 Amplifier sold separately

With the Foundation Sub 8 In-Ground Subwoofer, you can enjoy the legendary sound of MartinLogan's audio technology in the comfort of your outdoor space. Its compact and rugged design ensures it can withstand the rigors of outdoor use and provide years of reliable performance.

Tailor-Made for Outdoor Environments

Crafted specifically for outdoor use, the Foundation Sub 8 In-Ground Subwoofer boasts a water-resistant, high-output, high-excursion driver housed within a rugged HDPE enclosure — the same material employed in underground water systems. This unique design delivers excellent rigidity and protection against the elements, making it ideal for year-round use in gardens, patios, and other outdoor living spaces.



In addition to its robust build quality, the Foundation Sub 8 is designed to blend seamlessly into its surroundings. Its discreet "mushroom cap" hood provides a minimalist look, with only the top of the enclosure visible above ground. This hood not only offers protection against rain, snow, and other weather conditions, but also ensures even bass distribution and consistent airflow for extended trouble-free use.

The Foundation Sub 8 delivers clean, powerful bass that enhances music, movies, and other audio content, providing a rich and immersive sound that brings your outdoor entertainment to life. Whether you're hosting a party, enjoying a relaxing evening, or watching a movie under the stars, it's the

perfect companion for all your outdoor activities. With its rugged construction, minimalist design, and high-quality sound, Foundation Sub 8 is sure to become a favorite among homeowners and audiophiles alike.

High-Performance In-Ground Subwoofer

Design

Inground subwoofer with single high excursion driver

Crossover

200Hz Low Pass

Bass Driver

8" (20.3 cm) woofer with dual 8ohm voice coils. Water resistant materials and design.

Low Frequency Extension

45 Hz

Frequency Response (0-15 degree window)

±4 dB from 47 Hz - 170 Hz

Sensitivity – Outdoor

89 dB

Sensitivity – Anechoic

85 dB

Suitable Amplifier Power Range

15 – 400 W (system, per channel)

Impedance

Minimum 4ohms mono

Dimensions (diameter x depth)

22" (including canopy) x 13.8" (56 cm x 35 cm)

Weight

17.7 lbs (8kg)

Finish

Dark Satin Brown (canopy only)

Specifications are subject to change without notice.



hm
homemation



INNOVATING YOUR LIFESTYLE



011 781 8887



info@homemation.co.za



www.homemation.co.za



14 Commerce Crescent, Kramerville,
Johannesburg, South Africa