

A  T H E M[®]

Elevate. Refine. Enhance.



A  T H E M[®]

**Premium pre-amps, amplifiers
and audio/video receivers**



Anthem's pre-amps, amplifiers and audio/video receivers give you the most advanced tools available to easily connect, control, optimise and power all of your entertainment systems.

Backed by over 20 years of home-grown, hands-on design and innovative audio engineering experience, Anthem products provide an unprecedented level of reliability and functionality; they deliver one of the industry's highest performance-to-value equations.

This is just one reason why Anthem electronics are the choice of knowledgeable audiophiles, professional musicians and engineers the world over.



AVM 70	3
AVM 90	5
MCA	7
MRX	8
MRX SLM	10
STATEMENT P2 & P5	13
STATEMENT M1	14
STR PRE AMPLIFIER	15
STR INTEGRATED AMPLIFIER	16
STR POWER AMPLIFIER	17
MDX	19

AVM 70 15.2 Channel A/V Pre-Amplifier/ Processor



AVM 70 audio-video pre-amplifier/processor, now with 8K.

HIGHLIGHT FEATURES

- **New & Improved Electronics Platform**, up to 15.2 channels, now with HDMI 2.1 & HDCP 2.3 (8K Ready)
- **Platform Agnostic Streaming** with AirPlay2, Google Chromecast (Audio), Bluetooth v4.2, and Spotify Connect and Roon (coming soon!)
- **Reliable Networking Platform** with web-based setup and over-the-air updates
- **Next-Generation DSP Platform** featuring the award-winning Anthem Room Correction (ARC Genesis) software.
- **Modernized Design** with high-resolution front panel

AVM 70

15.2 CHANNEL A/V PREAMPLIFIER/PROCESSOR

- Toroidal Power Supply
- 32-Bit/768 kHz DAC
- Two Independent Subwoofer Outputs
- Wi-Fi / Ethernet Enabled
- IP and Serial Control
- Dolby Atmos
- DTS:X, DTS Virtual:X
- HDMI eARC
- Apple AirPlay 2
- Google Chromecast (Audio)
- Bluetooth v4.2
- Spotify Connect

HDMI & VIDEO

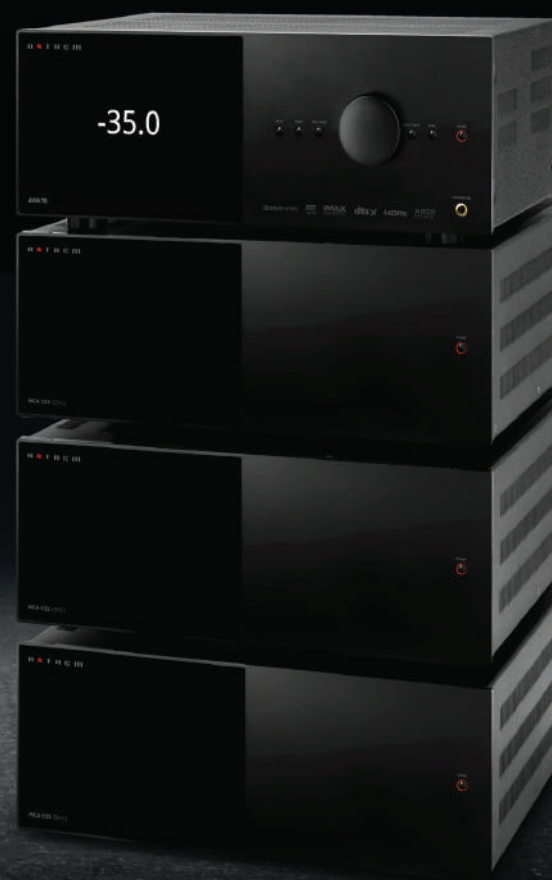
- Dolby Vision
- IMAX Enhanced
- HDMI 2.1 & HDCP 2.3
- HDMI eARC
- 4:4:4 Subsampling @ 8K/60 Hz (18.2 Gbps)
- High Dynamic Range (HDR10+)
- Variable Refresh Rate (VRR)
- Auto Low Latency Mode (ALLM)
- Quick Frame Transport
- Hybrid Log Gamma (HLG)
- BT.2020 Color Gamut
- 8K/60 Hz / 4K/120 Hz Pass-Through
- Zone 2 HDMI Output

Limitless Possibilities

The AVM 70 A/V Processor is capable of supporting a premium home theater featuring as many as 15 speakers and 2 subwoofers handling the latest Dolby Atmos and DTS:X object-oriented audio codecs. Pair an AVM 70 A/V Processor with a stack of MCA Amplifiers and you'll hear sound that rivals the best commercial cinemas.

MCA's scalability means you can purchase only the channels you need to power your vision of home entertainment. AVM 70 A/V Processor can manage configurations up to 15.2 channels (up from the previous generation's 11.2) with ARC Genesis Room Correction ensures the best possible sound at every seat. And you won't need to hide your gear from view.

Anthem's modernized design extends to every component in the AVM and MCA lines. All MCA power amplifiers are proudly made in Canada.



AVM 70 15.2 Channel A/V Pre-Amplifier/Processor

PREAMPLIFIER CHANNELS

Maximum Output (<0.1% THD)	10.7 VRMS, Subwoofer 11 VRMS
Frequency Response	20 Hz — 35 kHz (+/-0.2dB)
Frequency Response, Analog-Direct	20 Hz — 80 kHz (+0, -2 dB)
THD+N (4 Vrms output) *†	-100 dB
S/N Ratio (4 Vrms output, IEC-A filter)	110 dB
XLR Configuration	Pin 1: Ground, Pin 2: Positive, Pin 3: Negative

POWER CONSUMPTION

Typical Load	60 W
Standby	0.3 W
Standby IP Control Enabled	1.8 W
Standby HDMI Bypass Enabled	4.9 W

DIMENSIONS

Height (without feet)*	6" (15.24 cm)
Height with Rackmount Kit	4U
Width	17" (43.18 cm)
Depth	14-1/2" (36.4 cm)

TECHNICAL SPECIFICATIONS

All specifications are subject to change without notice. *Including Wi-Fi antenna and no power cord.
Anthem, ARC, Sonic Frontiers, and Paradigm are trademarks or registered trademarks of Paradigm Electronics Inc. All rights reserved.
All other trademarks are the property of their respective owners.



AVM 90 19 Channel A/V Pre-Amplifier/ Processor



AVM 90. Our most advanced and sophisticated audio- video processor to date.

Every aspect of its design was scrutinized, every component carefully considered and reconsidered. It's the culmination of everything we know and unlike anything you've ever heard. Meet our embodiment of excellence, meet AVM 90.

MAIN FEATURES

All-New Electronics Platform, with Anthem Room Correction up to 19 channels, HDMI 2.1, HDCP 2.3 supporting 8K/60Hz or 4K/120Hz

Reliable Networking Platform with web-based setup and over-the-air updates

Next-Generation DSP Platform with 64-bit floating-point data processing and dual precision states

Platform Agnostic Streaming with Google Chromecast (*Audio*), AirPlay 2 (*Audio*), Bluetooth v4.2, Spotify Connect, and Roon (*Coming Soon!*)

Modernized Design with high-resolution front panel display

MM Phono Stage

Upgraded Audio Circuitry

EXCLUSIVE FEATURES

Reference quality 32-Bit 768kHz DACs

Flagship electronics platform featuring upgraded audio circuitry, up to 19 channels

Ultra-low noise linear regulators

Custom Oversized High-Efficiency Toroidal Power Supply

Premium high-layer count circuit boards with isolating ground planes

Ultra-low noise high output OP-Amps

Superior 0.1% High Precision Resistors

Four Independent sub outputs allow ARC Genesis to correct multiple subs individually for frequency response, time, and phase alignment.



TECHNICAL SPECIFICATIONS

AVM 90 19 Channel (15.4) A/V Pre-Amplifier/Processor

PREAMPLIFIER CHANNELS

Maximum Output (<0.1% THD)	10.7 VRMS, Subwoofer 11 VRMS
Frequency Response	20 Hz — 35 kHz (+/-0.2dB)
Frequency Response, Analog-Direct	20 Hz — 80 kHz (+0, -2 dB)
THD+N (4 Vrms output) * †	-100 dB
S/N Ratio (4 Vrms output, IEC-A filter)	115 dB
XLR Configuration	Pin 1: Ground, Pin 2: Positive, Pin 3: Negative

POWER CONSUMPTION

Typical Load	60 W
Standby	0.3 W
Standby IP Control Enabled	1.8 W
Standby	0.3 W

DIMESIONS

Height (without feet)*	6" (15.24 cm)
Height with Rackmount Kit	4U
Width	17" (43.18 cm)

All specifications are subject to change without notice. *Including Wi-Fi antenna and no power cord. Anthem, ARC, Sonic Frontiers, and Paradigm are trademarks or registered trademarks of Paradigm Electronics Inc. All rights reserved. All other trademarks are the property of their respective owners.



MCA SERIES

MULTI-CHANNEL AMPLIFIERS

525 325 225

GENERATION 2



MCA SERIES: 225W in 2, 3, & 5-Channel Models

FEATURES & FUNCTIONS

- High current output for lower distortion
- Cosmetic match for AVM 90 and AVM 70 A/V Processors
- Advanced Load Monitoring system ensures long-term performance
- 8 bipolar output devices per channel for less stress on each device
- Less than 2 watts standby power consumption
- Crafted in Canada

Power Output

Continuous 20 Hz to 20 kHz, <1% THD (all models)

load	watts
8 ohms	225 W
4 ohms	400 W
2 ohms	600 W



MCA teams up perfectly with an AVM 90 or AVM 70.

THD at 100 W

at 1 kHz 0.0010%
at 20 kHz 0.015%

IMD at 100 W

ITU-R (19 kHz + 20 kHz) 0.0005%
SMPTE (60 Hz + 7 kHz) 0.002%

SNR, IEC-A, ref. 225 W 120 dB

Frequency Response, 20 Hz to 20 kHz

open circuit ± 0.1 dB
8 Ω ± 0.1 dB
4 Ω ± 0.1 dB
2 Ω ± 0.2 dB

Power Bandwidth, -3 dB at 200 W into 8 ohms 90 kHz

Slew Rate 30 V/μs

Damping Factor, 20 Hz to 1 kHz 300

Channel Separation, 100 Hz to 10 kHz >65 dB

Input Impedance

RCA / XLR 10 kΩ / 15 kΩ

Input Sensitivity, 225 W into 8 Ω 1.5 Vrms

Voltage Gain 29 dB

Power Requirement

consumption	standby	idle	typical	high output
MCA 525 (Gen. 2)	2.0 W	80 W	550 W	1200 W
MCA 325 (Gen. 2)	1.4 W	47 W	350 W	750 W
MCA 225 (Gen. 2)	1.0 W	35 W	240 W	500 W

This product operates from a single phase AC power source that supplies 108V – 132V at a frequency of 60 Hz for the 120V version and 198V – 264V at a frequency of 50/60 Hz for the 220V – 240V version.

Dimensions (all models)

Height 6-5/8" (16.9 cm)
Rackmounted Height 4U
Width 17-1/4" (43.8 cm)
Depth 18-1/8" (46 cm)

Weight (unpacked)

MCA 525 (Gen. 2) 61 lb (27.5 kg)
MCA 325 (Gen. 2) 43 lb (19.5 kg)
MCA 225 (Gen. 2) 40 lb (18 kg)

MRX 1140/740/540 A/V Receivers



Introducing the MRX Gen 4 Series audio-video receivers, now with 8K.

HIGHLIGHT FEATURES

- **New & Improved Electronics Platform**, up to 15.2 channels, now with HDMI 2.1 & HDCP 2.3 (8K Ready)
- **Platform Agnostic Streaming** with AirPlay2, Google Chromecast (Audio), Bluetooth v4.2, and Spotify Connect and Roon (coming soon!)
- **Reliable Networking Platform** with web-based setup and over-the-air updates.
- **Next-Generation DSP Platform** featuring the award-winning Anthem Room Correction (ARC Genesis) software.
- **Modernized Design** with high-resolution front panel

MRX 1140 | 140W

15.2 PROCESSOR WITH 11 AMPLIFIER CHANNELS

- Toroidal Power Supply
- 32-Bit/768 kHz DAC
- Two Independent Subwoofer Outputs
- Wi-Fi / Ethernet Enabled
- IP and Serial Control
- Dolby Atmos
- DTS:X, DTS Virtual:X
- HDMI eARC
- Apple AirPlay 2
- Google Chromecast (Audio)
- Bluetooth v4.2
- Spotify Connect

HDMI & VIDEO

- Dolby Vision
- IMAX Enhanced
- HDMI 2.1 & HDCP 2.3
- HDMI eARC
- 4:4:4 Subsampling @ 8K/60 Hz (18.2 Gbps)
- High Dynamic Range (HDR10+)
- Variable Refresh Rate (VRR)
- Auto Low Latency Mode (ALLM)
- Quick Frame Transport
- Hybrid Log Gamma (HLG)
- BT.2020 Color Gamut
- 8K/60 Hz / 4K/120 Hz Pass-Through
- Zone 2 HDMI Output

MRX 740 | 140W

11.2 PROCESSOR WITH 7 AMPLIFIER CHANNELS

- 32-Bit/768 kHz DAC
- Wi-Fi / Ethernet Enabled
- IP and Serial Control
- Dolby Atmos
- DTS:X, DTS Virtual:X
- HDMI eARC
- Apple AirPlay2
- Google Chromecast (Audio)

HDMI & VIDEO

- Dolby Vision
- IMAX Enhanced
- HDMI 2.1 & HDCP 2.3
- HDMI eARC
- 4:4:4 Subsampling @ 8K/60 Hz (18.2 Gbps)
- High Dynamic Range (HDR10+)
- Variable Refresh Rate (VRR)
- Auto Low Latency Mode (ALLM)
- Quick Frame Transport
- Hybrid Log Gamma (HLG)
- BT.2020 Color Gamut
- 8K/60 Hz / 4K/120 Hz Pass-Through
- Zone 2 HDMI Output

MRX 540 | 100W

7.2 PROCESSOR WITH 5 AMPLIFIER CHANNELS

- 32-Bit/768 kHz DAC
- Wi-Fi / Ethernet Enabled
- IP and Serial Control
- Dolby Atmos
- DTS:X, DTS Virtual:X
- HDMI eARC
- Apple AirPlay2
- Google Chromecast (Audio)
- Bluetooth v4.2
- Spotify Connect

HDMI & VIDEO

- Dolby Vision
- IMAX Enhanced
- HDMI 2.1 & HDCP 2.3
- HDMI eARC
- 4:4:4 Subsampling @ 8K/60 Hz (18.2 Gbps)
- High Dynamic Range (HDR10+)
- Variable Refresh Rate (VRR)
- Auto Low Latency Mode (ALLM)
- Quick Frame Transport
- Hybrid Log Gamma (HLG)
- BT.2020 Color Gamut
- 8K/60 Hz / 4K/120 Hz Pass-Through



TECHNICAL SPECIFICATIONS

	MRX 1140 140W 15.2 PROCESSOR WITH 11 AMPLIFIER CHANNELS	MRX 740 140W 11.2 PROCESSOR WITH 7 AMPLIFIER CHANNELS	MRX 540 100W 7.2 PROCESSOR WITH 5 AMPLIFIER CHANNELS
PREAMPLIFIER CHANNELS			
Maximum Output (<0.1% THD)	5.2 VRMS, 7.1VRMS	5.2 VRMS, 7.1VRMS	5.2 VRMS, 7.1VRMS
Frequency Response	20Hz - 30KHz +/-0.2dB	20Hz - 30KHz +/-0.2dB	20Hz - 30KHz +/-0.2dB
Frequency Response, Analog-Direct	N/A	N/A	N/A
THD+N (4 Vrms output) *†	-100 dB	-100 dB	-100 dB
S/N Ratio (4 Vrms output, IEC-A filter)	110 dB	110 dB	110 dB
POWER CONSUMPTION			
Typical Load	570 W	485 W	365 W
Standby	0.3 W	0.3 W	0.3 W
Standby IP Control Enabled	1.8 W	1.8 W	1.8 W
Standby	4.9 W	4.9 W	4.9 W
DIMENSIONS			
Height (without feet)*	6" (15.24 cm)	6" (15.24 cm)	6" (15.24 cm)
Height with Rackmount Kit	4U	4U	4U
Width	17" (43.18 cm)	17" (43.18 cm)	17" (43.18 cm)
Depth	14-1/2" (36.4 cm)	14-1/2" (36.4 cm)	14-1/2" (36.4 cm)

All specifications are subject to change without notice. *Including Wi-Fi antenna and no power cord.
Anthem, ARC, Sonic Frontiers, and Paradigm are trademarks or registered trademarks of Paradigm Electronics Inc. All rights reserved.
All other trademarks are the property of their respective owners.



MRX SLM Compact A/V Receiver



*With its slim design,
the MRX SLM can be
hidden behind the TV.*

EXCLUSIVE FEATURES

Compact Form Factor: With dimensions half that of traditional AV receivers

Concealed Design: Easily disappears from sight, either behind your flat-panel TV or in a discreet position, creating a seamless setup.

Streaming Versatility: Incorporates Apple® AirPlay®, Google Cast™, Spotify Connect™, and Bluetooth® streaming capabilities.

Enhanced Connectivity: Comes with HDMI 2.0b eARC and HDCP 2.3, enabling seamless 4K/60Hz compatibility.

Precision Audio Calibration: Employs ARC (Anthem Room Correction) technology for fine-tuned sound.

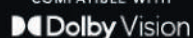
Effortless Setup: Utilizes the Anthem Web-UI for a simplified setup process.

Immersive AV Support: Supports Dolby Atmos and DTS:X and is compatible with Dolby Vision to deliver captivating audio-visual experiences.

Streamlined Amplification: 5-channel Slimline A/V receiver, delivering a consistent 50 watts per channel into 8 ohms.



COMPATIBLE WITH



MRX SLM Compact A/V Receiver

SPEAKER OUTPUT (0 DBFS DIGITAL INPUT, 1 W OUTPUT INTO 8 OHMS)

Frequency Response	20 Hz - 20 kHz +/-0.5dB
S/N Ratio (IEC-A filter)	> 92 dB
THD+N ratio (1 kHz, 20-22 kHz filter)	< -87 dB

SPEAKER OUTPUT (1 VRMS ANALOG INPUT, 1 W OUTPUT INTO 8 OHMS)

Frequency Response	20 Hz - 20 kHz +/-0.5dB
S/N Ratio (IEC-A filter)	> 88 dB
THD+N ratio (1 kHz, 20-22 kHz filter)	< -85 dB

SPEAKER IMPEDANCE

Compatible with 4 Ohms or higher impedance.

MAXIMUM CONTINUOUS OUTPUT (0.1% THD)

Channels 1-5, Two Driven into 8 Ohms	50 W
Channels 1-5, Two Driven into 4 Ohms	92 W

POWER CONSUMPTION

Typical Load (1/8th power, all channels driven into 8 ohms)	< 50 W
Standby (IP Control Enabled)	< 2 W
Standby (IP Control + HDMI Bypass Enabled)	< 5 W

DIMENSIONS

Height (without feet)	1.5" / 3.8 cm
Height (with feet)	1.7" / 3.8 cm
Height (with rackmount kit)	1U / 1.75" / 4.4 cm
Width	11" / 27.9 cm
Width (with rackmount Kit)	19" / 43.2 cm
Depth	11" / 27.9 cm
Depth (including power cord)	13" / 33.0 cm

WEIGHT

6.6 lb / 3.0 kg

VOLTAGE

120 V version	In countries where the line voltage is 120 V, this product operates from a single phase AC power source that supplies between 108 V and 132 V at a frequency of 60 Hz.
220-240 V version	In countries where the line voltage is 220, 230, or 240 V, this product operates from a single phase AC power source that supplies between 198 V and 264 V at a frequency of 50 Hz.



Anthem, AnthemLogic, ARC, Sonic Frontiers, and Paradigm are trademarks or registered trademarks of Paradigm Electronics Inc. © Paradigm Electronics Inc. All rights reserved. We reserve the right to change specifications or features without notice as design improvements are incorporated.

Apple, AirPlay and Mac are trademarks of Apple Inc., registered in the U.S. and other countries and regions.

Use of the Works with Apple AirPlay badge means that an accessory has been designed to work specifically with the technology identified in the badge and has been certified by the developer to meet Apple performance standards.

To use AirPlay with Anthem MRX SLM, the latest version of iOS, iPadOS, or macOS is recommended.

Google, Google Play and Google Cast built-in are trademarks of Google LLC.

Dolby, Dolby Atmos, Dolby Vision and the double-D symbol are registered trademarks of Dolby Laboratories Licensing Corporation. Manufactured under license from Dolby Laboratories. Confidential unpublished works. Copyright © 2012-2021 Dolby Laboratories. All rights reserved.

For DTS patents, see <http://patents.dts.com>. Manufactured under license from DTS, Inc. or DTS Licensing Limited. DTS, DTS:X, and the DTS and DTS:X logos are registered trademarks or trademarks of DTS, Inc. in the United States and other countries. © 2021 DTS, Inc. ALL RIGHTS RESERVED.

The terms HDMI, HDMI High-Definition Multimedia Interface, HDMI trade dress and the HDMI Logos are trademarks or registered trademarks of HDMI Licensing Administrator, Inc.

Wi-Fi® is a registered trademark of the Wi-Fi Alliance.

The Bluetooth® word mark and logos are registered trademarks owned by Bluetooth SIG, Inc. and any use of such marks by Anthem is under license.

The Spotify software is subject to third-party licenses found here: www.spotify.com/connect/third-party-licenses

All other trademarks are the property of their respective owners.



STATEMENT

P2 & P5



Performance From The Heart

In life we admire “heart.” When we say someone has heart we mean passion, spirit, fortitude. And we applaud it. While the amplifier is the brawn behind every successful music and movie presentation, it is also the heart! Its role is as crucial as that of the speakers in its ability to render delicate musical detail one moment and deliver room-shaking explosions the next. The most exquisite piece of music falls flat without clean, quiet power to sustain it through to its natural, musical ebb. Movie special effects require an inordinate supply of stable, high current power to give visceral credibility to the “special” aspect of each effect! In fact, all truly successful sound reproduction requires “heart.” The heart of an amplifier rests with its design and it is here that P2 and P5 amplifiers reveal their high-end lineage: multi-layered, hand-designed circuit boards with thick copper traces; rugged, independent power supplies with tuned toroidal power transformers for each amplifier channel; fourteen rugged bipolar output devices per channel; custom-designed convection-cooled heatsinks with serrated fins; a “no-fuse” design strategy.

TECHNICAL SPECIFICATIONS



P2

INPUTS

P2 2 Single-Ended, 2 Balanced, 1 Relay Trigger (3.5 mm Mono Jack)
P5 5 Single-Ended, 5 Balanced, 1 Relay Trigger (3.5 mm Mono Jack)

OUTPUTS

P2 2 Pairs Speaker Binding Posts, 1 Relay Trigger (3.5 mm Mono Jack)
P5 5 Pairs Speaker Binding Posts, 1 Relay Trigger (3.5 mm Mono Jack)

SWITCHES

Front Panel Power (On/Off)
Rear Panel On/Off Modes (Trigger, Manual, Auto), Inputs (RCA, XLR, XLR -6dB)

THD+N 0.0007% at 1 kHz, 0.008% at 20 kHz (200 W into 8 Ω)

POWER OUTPUT

(Per channel, continuous RMS, 20 Hz to 20 kHz, <0.1% THD, one or all channels driven)

Impedance # of Channels Driven	8 Ω		4 Ω		2 Ω	
	1	All	1	All	1	All
P2	325 W	325 W	500 W	500 W	675 W	675 W
P5	325 W	325 W	500 W	500 W	675 W	675 W

P2 and P5 amplifiers are stable into any impedance down to a short circuit at full output

IMD 0.00019% (CCIF, 325 W into 8 Ω)
POWER BANDWIDTH 10 Hz to 150 kHz (+0 -3 dB, 325 W into 8 Ω)
FREQUENCY RESPONSE 20 Hz to 20 kHz (+0 -0.15 dB), 5 Hz to 100 kHz (+0 -2 dB)
INPUT SENSITIVITY (RCA and XLR 0 dB inputs) 1 Vrms in for 28.3 Vrms out (100 W into 8 Ω)
INPUT IMPEDANCE 18 k Ω (RCA), 22 k Ω (XLR)
DAMPING FACTOR >600 at 20 Hz, 400 at 1 kHz (ref. 8 Ω)
S/N RATIO 125 dB, A-weighted (ref. 325 W)
CROSSTALK (between any two channels) -140 dB (20 Hz), -80 dB (20 kHz)
VOLTAGE GAIN 29 dB
SLEW RATE 40 V/ μ s



P5

POWER REQUIREMENT

Power Consumption (at maximum power) (output 8 Ω load)

P2 1800 W (140W at idle)
P5 2 x 1800 W (340W at idle)

DIMENSIONS

Height 9-3/8 inches (23.8 cm) including feet; rack-mounting: 5 rack units without feet
Width: Standard version 19-1/4 inches (49 cm)
Rack-Mount version 19 inches (48.3 cm)
No-Handle version 17-1/4 inches (43.8 cm)
Depth 22-1/2 inches (57.2 cm) including handles

WEIGHT (unpacked)

P2 75 lb (34 kg)
P5 130 lb (59 kg)

ADVANCED LOAD MONITORING (ALM)

All Anthem® Statement amplifiers are designed to perform flawlessly—offering stunning musicality, tonal neutrality and incredible dynamics while driving any speaker load reliably under real-world conditions! The power supply is conservatively rated and the amplifiers run cool for greater reliability, but we didn't stop there.

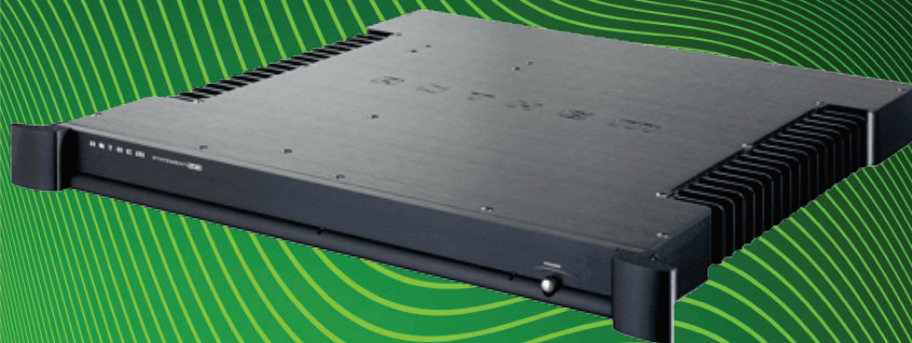
These amplifiers feature our ALM (Advanced Load Monitoring) circuitry which protects sensitive output devices by constantly monitoring temperature, current and voltage to ensure optimum long-term performance. ALM is totally non-invasive—it is not in the signal path and only engages in the most extreme circumstances to protect the amplifier from damage by maintaining the safe operating area of the output devices. Buyer beware however! Not all amplifier manufacturers have sophisticated load-monitoring provisions. Many have saved the added cost, leaving their output devices unprotected, choosing instead to use the amplifier's output devices as “fuses.” At Anthem, ALM is just one of the ways in which our products provide owners with years of reliable service.

STATEMENT M1

2,400W into 3 ohms

2,000W into 4 ohms

1,000W into 8 ohms



The highest sound quality at all volume levels, flat frequency response into any load, and stable into the most difficult loads. The Statement M1 is a state-of-the-art monaural amplifier delivering 1,000 watts into 8 ohms and 2,000 watts into 4 ohms or less with THD remaining under 0.1% from 20 Hz to 20 kHz.

Power Output continuous, 20 Hz to 20 kHz, <0.1% THD+N

8 Ω	1000 W
4 Ω	2000 W
3 Ω	2400 W
2 Ω	>2000 W depending on line voltage regulation

With 120V AC supply the amplifier's maximum output into impedances 4 Ω and lower, as well as its maximum duration, vary depending on line voltage regulation.

Frequency Response 20 Hz to 20 kHz

Open circuit	+/- 0.1 dB
8 Ω	+/- 0.1 dB
4 Ω	+/- 0.1 dB
2 Ω	+/- 0.2 dB

Power Bandwidth 1000 W at 8 Ω 5 Hz to 45 kHz

THD+N at 1 kHz, 8 Ω

1 W	0.01 %
10 W	0.01 %
100 W	<0.03 %
1000 W	<0.06 %

IMD 19 kHz + 20 kHz, CCIF 0.003%

S/N Ratio ref. 1000 W, IEC-A 113 dB

Voltage Gain 29 dB

Input Sensitivity 100 mV for 1 W output, 3.2 V for 1000 W output (8 Ω)

Input Impedance 10 k Ω (RCA), 20 k Ω (XLR)

Damping Factor 800 to 1400 depending on frequency

XLR Configuration Pin 1: Ground, Pin 2: Positive, Pin 3: Negative

POWER REQUIREMENTS

Consumption in a typical music/theater installation

standby mode, 120V mains	<1 W
standby mode, 240V mains	<2 W
operate mode, idle33 W
typical operation300 W

Where mains voltage is 120V, one dedicated 15A circuit per amplifier is recommended depending on speaker. A 20A circuit is adequate for two amplifiers playing music where speaker impedance is 8 Ω .

This product operates from a single phase AC power source that supplies between 108V and 264V at a frequency of 50 or 60 Hz.

DIMENSIONS

Height	with feet	2 1/4 inches (5.7 cm)
	without feet	1 rack unit
Width	standard handles	19 1/4 inches (49 cm)
	rackmount handles	19 inches (48.3 cm)
Depth		18 3/4 inches (47.6 cm)
Weight (unpacked)		20 lb (9 kg)

STR PREAMPLIFIER



FEATURES & FUNCTIONS

- High-resolution analog and digital preamplifier
- Anthem Room Correction™ (ARC) to optimize in-room response
- Bass management for two subwoofers, in mono or stereo
- Up-sampling of lower-resolution sources to 32-bit / 192 kHz
- Asynchronous USB audio input supports 32-bit / 384 kHz PCM, and DSD 2.8 / 5.6 MHz sources
- Coaxial, optical, and AES/EBU inputs up to 192 kHz
- MM and MC phono, balanced XLR, and single-ended analog inputs
- Six pre-RIAA curves plus adjustable settings for playing older records accurately
- Analog Direct Mode
- Adjustable analog input levels to match sources, minimize noise and prevent distortion
- Graphic front panel display for easy setup navigation
- Balanced output for all channels including the two subs
- Home Theater Bypass Mode works without having to turn power on and includes RCA/XLR input for two subs
- Create up to 30 virtual inputs for setup flexibility



STR Preamplifier pictured with STR Power Amplifier (sold separately). Both models available in black or silver finishes.

Phono Preamplifier

Input Impedance 100 Ω (MC), 47 k Ω || 270 pF (MM)

RIAA Response (20 Hz - 20 kHz) \pm 0.1 dB

Gain (1 kHz - volume set to 0 dB) 61 dB (MC), 41 dB (MM)

DSP Mode

Maximum Input (at 1 kHz for <0.01% THD 20 Hz - 20 kHz) 3.6 mV (MC), 38 mV (MM)

THD+N (at 1 kHz 20 Hz - 20 kHz BW, 2 Vrms output) < 0.015% (MC), < 0.003% (MM)

THD (at 1 kHz 20 Hz - 20 kHz BW, 2 Vrms output) 0.001% (MC), 0.001% (MM)

SNR (IEC-A, 2 Vrms output) 86 dB (MC), 103 dB (MM)

Direct Mode

Maximum Input Direct Mode

(at 1 kHz for <0.01% THD 20 Hz - 20 kHz) 11.8 mV (MC), 129 mV (MM)

THD+N (at 1 kHz 20 Hz - 20 kHz BW, 2 Vrms output) < 0.008% (MC), < 0.002% (MM)

THD (at 1 kHz 20 Hz - 20 kHz BW, 2 Vrms output) 0.001% (MC), 0.001% (MM)

SNR (IEC-A, 2 Vrms output) 90 dB (MC), 110 dB (MM)

Preamplifier

Frequency Response

digital-in, 192 kHz 10 Hz - 50 kHz (+0, -0.5 dB)

digital-in, 96 kHz 10 Hz - 45 kHz (+0, -0.5 dB)

digital-in, 44.1 kHz 10 Hz - 20 kHz (\pm 0 dB)

analog-in, DSP mode 10 Hz - 40 kHz (+0.00, -0.20 dB)

analog-in, direct mode 10 Hz - 80 kHz (+0.00, -0.10 dB)

THD+N (20 Hz - 20 kHz BW, 2 Vrms output)

DSP mode 0.0006% Digital in, 0.0017% Analog in

Analog Direct Mode 0.0016%

SNR (at 1 kHz, IEC-A, 2 Vrms output)

DSP mode 113 dB (digital-in), 108 dB (analog-in)

Analog Direct Mode 120 dB

Maximum Output (<0.1% THD)

RCA connectors (direct and DSP modes) 3.3 Vrms

XLR connectors (direct and DSP modes) 6.6 Vrms

XLR Configuration Pin 1: Ground, Pin 2: Normal, Pin 3: Inverted

Power Requirement

This product operates from a single phase AC power source that supplies between 108V and 264V at a frequency of 50 or 60 Hz.

Power Consumption

Standby 0.38 W (120V), 0.45 W (240V)

Standby + Network 1.1 W (120V), 1.2 W (240V)

Typical Use 10 W

Dimensions

Height 3-8/9" (9.93 cm)

Width 17" (43.2 cm)

Depth (not including power cord) 14-5/6" (37.69 cm)

Weight (unpacked) 16.8 lb (7.6 kg)

STR INTEGRATED AMPLIFIER



FEATURES & FUNCTIONS

- High-resolution preamplifier section
 - High current, high output amplifier section
 - Amplifier uses 8 bipolar output devices per channel, a toroidal transformer power supply, and Advanced Load Monitoring for 200W at 8 ohms, 400W at 4 ohms, 550W at 2 ohms, all continuous
 - Anthem Room Correction™ to optimize in-room response
 - Bass management for two subwoofers, in mono or stereo
 - Up-sampling of lower-resolution sources to 24-bit / 192 kHz
 - Asynchronous USB Audio Input supports 32-bit / 384 kHz PCM, and DSD 2.8 / 5.6 MHz sources
 - S/PDIF coaxial and optical, and balanced AES/EBU inputs
 - MM and MC phono, balanced XLR, and single-ended analog inputs
- Analog Direct mode
 - Graphic Front Panel Display for easy setup navigation
 - Controllable via Ethernet, RS-232, or supplied IR remote



Available in both black or silver (as shown).

Phono Preamplifier

Input Impedance	100 Ω (MC), 47 kΩ 270 pF (MM)
RIAA Response (20 Hz - 20 kHz)	± 0.1 dB
Maximum Input (at 1 kHz for <0.1% THD 20 Hz - 20 kHz)	3.6 mV (MC), 37.7 mV (MM)
THD+N (at 1 kHz, 20 Hz - 20 kHz BW, 2 Vrms output)	0.008% (MC), 0.005% (MM)
SNR (at 1 kHz, IEC-A, 2 Vrms output)	82 dB (MC), 96 dB (MM)
Gain (default at 1 kHz, user adjustable ± 20 dB)	55 dB (MC), 35 dB (MM)
Preamplifier	
Frequency Response	
digital-in, 192 kHz	10 Hz - 50 kHz (+0.00, -0.50 dB)
digital-in, 96 kHz	0 Hz - 45 kHz (+0.00, -0.50 dB)
digital-in, 44.1 kHz	10 Hz - 20 kHz (+0.00, -0.03 dB)
analog-in, DSP mode	10 Hz - 40 kHz (+0.02, -0.20 dB)
analog-in, direct mode	10 Hz - 80 kHz (+0.00, -0.10 dB)
THD+N (at 1 kHz, 20 Hz - 20 kHz BW, 2 Vrms output)	
digital-in, 44.1 kHz, 0 dBFS	0.0008%
analog-in, DSP mode, 1 Vrms input	0.0020%
analog-in, direct mode, 1 Vrms input	0.0020%
SNR (at 1 kHz, IEC-A, 2 Vrms output)	
digital-in, 44.1 kHz, 0 dBFS	112 dB
analog-in, DSP mode, 2 Vrms input	110 dB
analog-in, direct mode, 2 Vrms input	120 dB
Maximum Output (<0.1% THD)	2.2 Vrms except analog-direct 3.3 Vrms
XLR Configuration	Pin 1: Ground, Pin 2: Normal, Pin 3: Inverted

Power Amplifier

Output (per channel, continuous, 20 Hz - 20 kHz, <1% THD)	200 W (8Ω), 400 W (4Ω), 550 W (2Ω)
THD (100 W)	0.002% (1 kHz), 0.015% (20 kHz)
IMD (100 W)	
ITU-R (19 kHz + 20 kHz)	0.0007%
SMPTE (60 Hz + 7 kHz)	0.005%
SNR (IEC-A, ref. 200 W)	114 dB
Frequency Response (20 Hz - 20 kHz)	± 0.1 dB
Power Bandwidth (-3 dB at 200 W into 8 ohms)	80 kHz
Slew Rate	30 V/μs
Damping Factor (20 Hz - 1 kHz)	330
Channel Separation	101 dB (100 Hz), 61 dB (10 kHz)

Power Requirement

120V version: In countries where the line voltage is 120V, this product operates from a single phase AC power source that supplies between 108V and 132V at a frequency of 60 Hz.

220V-240V version: In countries where the line voltage is 220V, 230V, or 240V, this product operates from a single phase AC power source that supplies between 198V and 264V at a frequency of 50 Hz.

Power Consumption

Standby	0.38 W (120V), 0.45 W (240V)
Standby + Network	1.1 W (120V), 1.2 W (240V)
Idle	40 W
Typical Use	250 W
High Output	500 W

Dimensions

Height	6-¾" (17.2 cm)
Width	17" (43.2 cm)
Depth (not including power cord)	17-½" (44.5 cm)
Weight (unpacked)	40 lb (18 kg)

STR POWER AMPLIFIER



FEATURES & FUNCTIONS

- 400W / 600W / 800W continuous into 8 / 4 / 2 ohms, both channels driven
- Cascoded complementary feedback input stage
- Sixteen bipolar output devices per channel
- Dual Mono Design
- Massive toroidal transformers
- Soft turn-on
- Four power on/off options
- No rail fuses
- Advanced Load Monitoring™ Technology
- Graphic front panel display for the power meter, status, and easy setup navigation



Available in both black or silver (as shown).

STR Power Amplifier pictured with STR Preamplifier (sold separately). Both models available in black or silver finishes.

STR Power Amplifier

Output (per channel, continuous, 20 Hz - 20 kHz, <1% THD)	400 W (8Ω), 600 W (4Ω), 800 W* (2Ω)
THD (400 W)	0.0007% (1 kHz), 0.004% (20 kHz)
IMD (300 W)	
ITU-R (19 kHz + 20 kHz)	0.0006%
SMPTE (60 Hz + 7 kHz)	0.0016%
SNR (IEC-A, ref. 400 W)	121 dB
Frequency Response (20 Hz - 20 kHz)	± 0.1 dB
Power Bandwidth (-3 dB at 400 W into 8 ohms)	91 kHz
Slew Rate	30 V/μs
Damping Factor (20 Hz - 1 kHz)	360
Channel Separation	101 dB (100 Hz), 98 dB (10 kHz)
Input Impedance	10 kΩ (RCA), 15 kΩ (XLR)
Input Sensitivity (for 400 W into 8Ω)	2.1 Vrms
Voltage Gain	29 dB

Power Requirement

120V version: In countries where the line voltage is 120V, this product operates from a single phase AC power source that supplies between 108V and 132V at a frequency of 60 Hz.

220V-240V version: In countries where the line voltage is 220V, 230V, or 240V, this product operates from a single phase AC power source that supplies between 198V and 264V at a frequency of 50 Hz.

Power Consumption

Standby	310 mW
Idle	65 W
Typical Playback Levels	150 W - 300 W
High Playback Levels	600 W - 1100 W

Dimensions

Height	6-3/4" (17.2 cm)
Width	17" (43.2 cm)
Depth (not including power cord)	18-1/2" (47 cm)
Weight (unpacked)	60 lb (27.3 kg)

*Maximum 3 seconds due to high current draw.






MDX



New Anthem MDX Series is the first distribution solution to feature fully powered independent-zone subwoofer connections, as well as ARC® Genesis room correction for each zone.

MDX Series features today’s cutting-edge Anthem distribution technology so you can expect smooth, efficient, consistent high power and reliability. MDX Series is engineered to simplify your next custom audio system installation, and to blow your clients away with extreme performance in any setup.

Comparison Chart

	 MDX-8	 MDX-12	 MDX-16
ZONES (CHANNELS)	4(8)	12(6)	8(16)
AUDIO INPUTS			
Stereo RCA Analog Input	4	6	8
Coaxial RCA Digital input	—		2
Toslink (Optical) Digital Input	1		2
AUDIO OUTPUTS			
Mono RCA Analog Sub Output	4	6	8
Stereo Speaker Level Output	4		8
Watts 8 ohms	60 W	75 W	60 W
Watts 4 ohms	120 W	150 W	120 W
Stereo RCA Passthrough	—		2
Toslink (Optical) Digital Output	—		1
CONTROL CONNECTIVITY			
Ethernet (RJ-45)	1		1
Micro USB	1		1
Serial (RS-232)	1		1
3.5mm Triggers (In/Out)	2		2

TECHNICAL SPECS

	MDX-8	MDX-12	MDX-16
Channels/Zones	8 channels/Up to 4 zones	12 channels/Up to 6 zones	16 channels/Up to 8 zones
Power Output RMS per Channel (8 Ohm)	60 Watts	75 Watts	60 Watts
Power Output RMS per Channel (4 Ohm)	120 Watts	150 Watts	120 Watts
High Output Mode (Bridged) RMS per Channel (8 Ohm)	200 Watts	280 Watts	200 Watts
Frequency Response	10 Hz - 20kHz (0.5dB)	20 Hz - 20kHz (0.4dB) at 8 Ohm	10 Hz - 20kHz (0.5dB)
Inputs (analog)	4x RCA pairs (left/right)	6x RCA pairs (left/right), 2x RCA pairs (buss left right)	8x RCA pairs (left/right)
Inputs (trigger)	1 x 3.5mm (5 - 24V DC/AC)	1 x 3.5mm (5 - 24V DC/AC)	1 x 3.5mm (5 - 24V DC/AC)
Outputs (speaker level)	4x removable Euroblock style (left/right) accommodate wire up to 12AWG	6x removable Phoenix style (left/right) accommodate wire up to 12AWG	8x removable Euroblock style (left/right) accommodate wire up to 12AWG
Outputs (other)		1 x 3.5mm trigger loop, 2x RCA pairs (buss left/right)	
Control (black panel)	Power Mode: Auto, Trigger, External Command; Network reset (pinhole); Factory Reset (pinhole); Mains Power; On/Off	Power Mode: Auto, Trigger, Continuous Operation; Input Gain (per zone); Input Selection (per zone); Bridge Mode (per zone)	Power Mode: Auto, Trigger, External Command; Network reset (pinhole); Factory Reset (pinhole); Mains Power; On/Off
Room Correction	ARC	No	ARC
Microphone (for room correction)	Included dual input microphone (3.5mm and mini-USB)	No	Included dual input microphone (3.5mm and mini-USB)
IP Control (via IP or RS-232)	Drivers for Control 4, Creston, Elan, RTI, Savant, URC	No	Drivers for Control 4, Creston, Elan, RTI, Savant, URC
AC Voltage	120V-50/60Hz	120V-50/60Hz	120V-50/60Hz
Rack Mount Ears/Feet	Included	Included	Included
Rack Space (feet removed)	2U	1U	2U
Dimensions (H x W x D, with feet)	3.9" x 17.0" x 17.0" (9.9 x 43.2 x 43.2 cm)	1.75" x 17.0" x 16.6" (4.45 x 43.18 x 42.16 cm)	3.9" x 17.0" x 17.0" (9.9 x 43.2 x 43.2 cm)
Weight	21 lbs. (9.5kg)	16 lbs. (7.26kg)	24 lbs. (10.8kg)
Accessories (included)		Power cord, Rack Mount Ears, 3.5mm Trigger Cable, Warranty Card, Quick Start Guide, T10 Torx Bit	







hm
homemation



INNOVATING YOUR LIFESTYLE



011 781 8887



info@homemation.co.za



www.homemation.co.za



14 Commerce Crescent, Kramerville,
Johannesburg, South Africa