

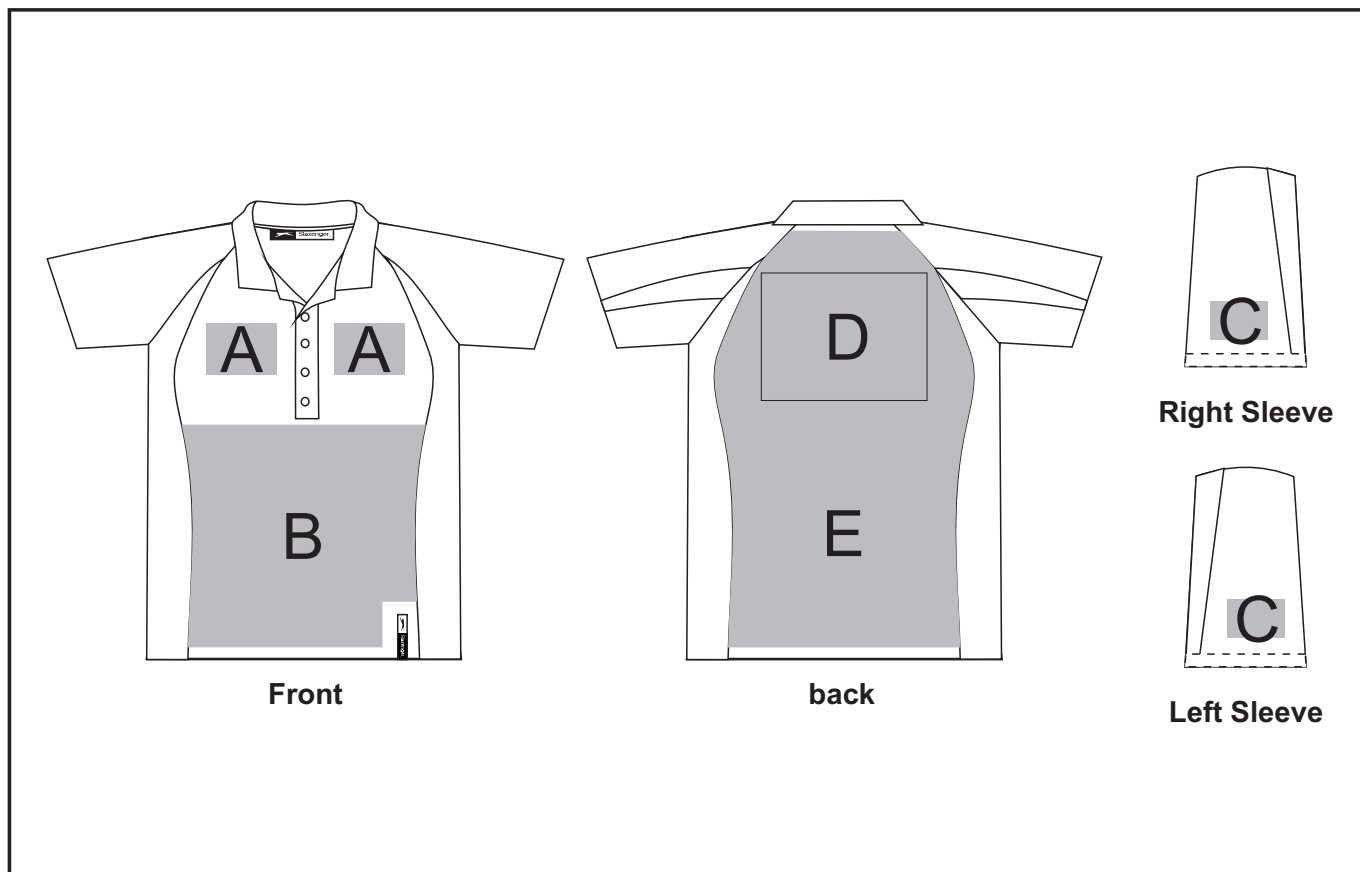
SLAZ-3202

Slazenger Apex Golf Shirt Mens

Also available in



Check Logo24
guide and t's & c's



Need to know:

- Includes 1-Position Embroidery **OR** 1-Position Digital Transfer **OR** 1-Position Engraving (setup fee applies)
- **EMB/DTC inclusive parameters:** Left/Right Chest = 100mm x 100mm **OR** Back = 8000mm²
- No Laser on BL; N; W garments and piping
- Laser can be branded over zips and seams.
- Sublimation on white **ONLY**
- Cannot guarantee a 100% straight branding on any clothing item with check or stripe detail

Branding Options:

Position A

1. Embroidery (EMB) - 9 colours
Size: 100mm diameter
2. Screen Print (SA) - 6 colours
Size: 100mm wide x 80mm high
3. Sublimation (SUB-A) - Full colour
Size: 100mm wide x 80mm high
4. Laser Engrave (LG) - Tone on tone
Size: 100mm wide x 80mm high
5. Digital Transfer Clothing (DTC) - Full colour
Size: 100mm wide x 100mm high

Position B

1. Laser Engrave (LG) - Tone on tone
Size: 297mm wide x 210mm high

Position C

1. Embroidery (EMB) - 9 colours
Size: 80mm diameter
2. Screen Print (SA) - 6 colours
Size: 60mm wide x 60mm high
3. Sublimation (SUB-A) - Full colour
Size: 60mm wide x 60mm high

Position D

1. Embroidery (EMB) - 9 colours
Size: 200mm wide x 200mm high
2. Screen Print (SA) - 6 colours
Size: 260mm wide x 200mm high
3. Sublimation (SUB-C) - Full colour
Size: 260mm wide x 200mm high
4. Digital Transfer Clothing (DTC) - Full colour
Size: 210mm wide x 148mm high

Position E

1. Laser Engrave (LG) - Tone on tone
Size: 297mm wide x 210mm high

4. Laser Engrave (LG) - Tone on tone
Size: 100mm wide x 60mm high

5. Digital Transfer Clothing (DTC) - Full colour
Size: 80mm wide x 80mm high