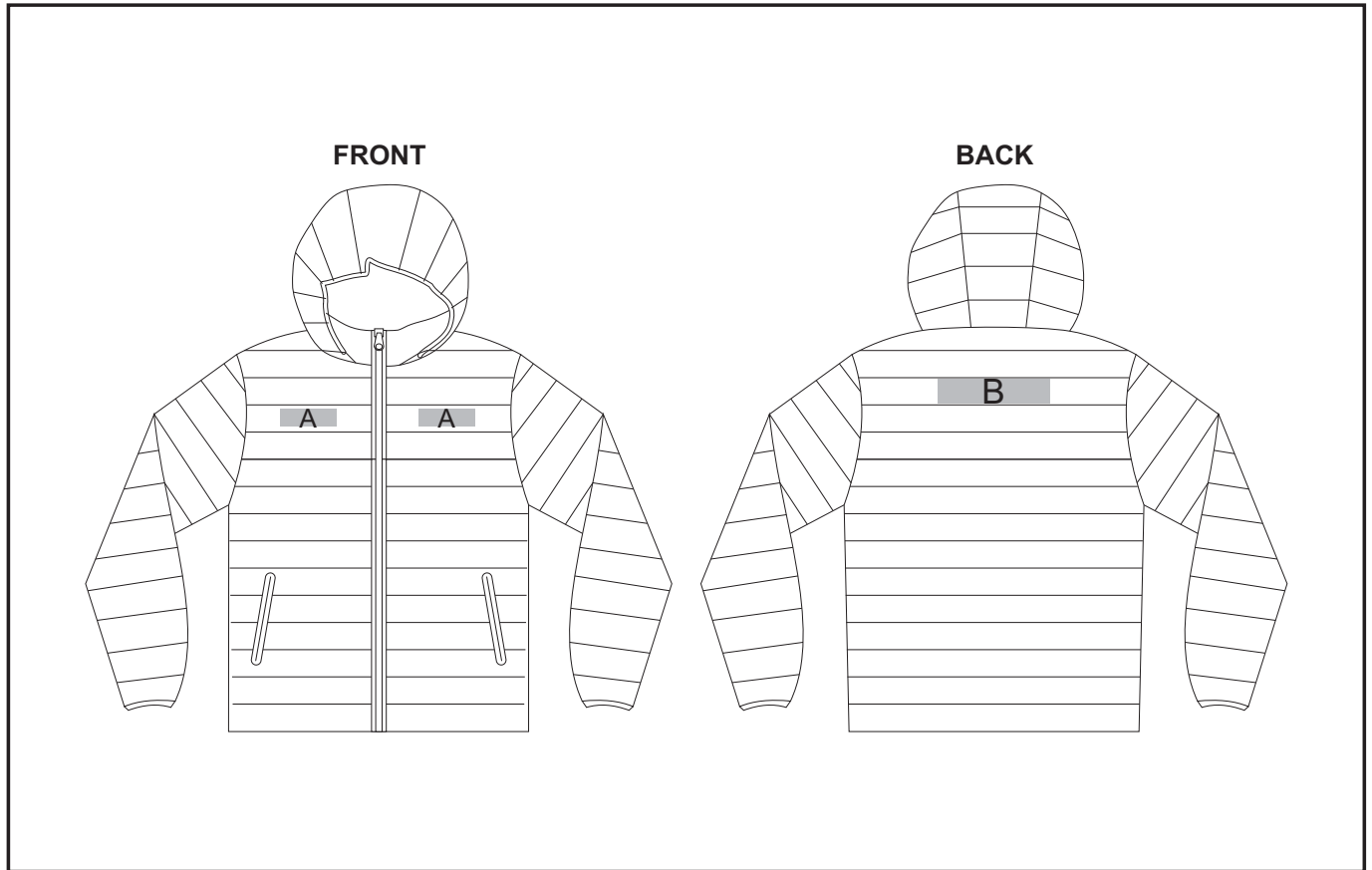


SLAZ-11423

Ladies Kyoto Jacket



Need to know:

- Includes 1 Position Embroidery (setup fee applies)
- Cannot guarantee a 100% straight branding on any clothing item with check or stripe detail.
- The panels on the garment are inconsistent from Small to XL.
- The logo will be branded in the closest left / right chest and back panel, to the standard left/right chest and back position.
- **DTC/EMB** inclusive Parameters: Left/Right Chest or Back =100mm x 100mm

Branding Options:

Position A

1. Embroidery (EMB) - 9 Colour
Size: 90mm wide x 25mm high

Position B

1. Embroidery (EMB) - 9 Colour
Size: 180mm wide x 40mm high