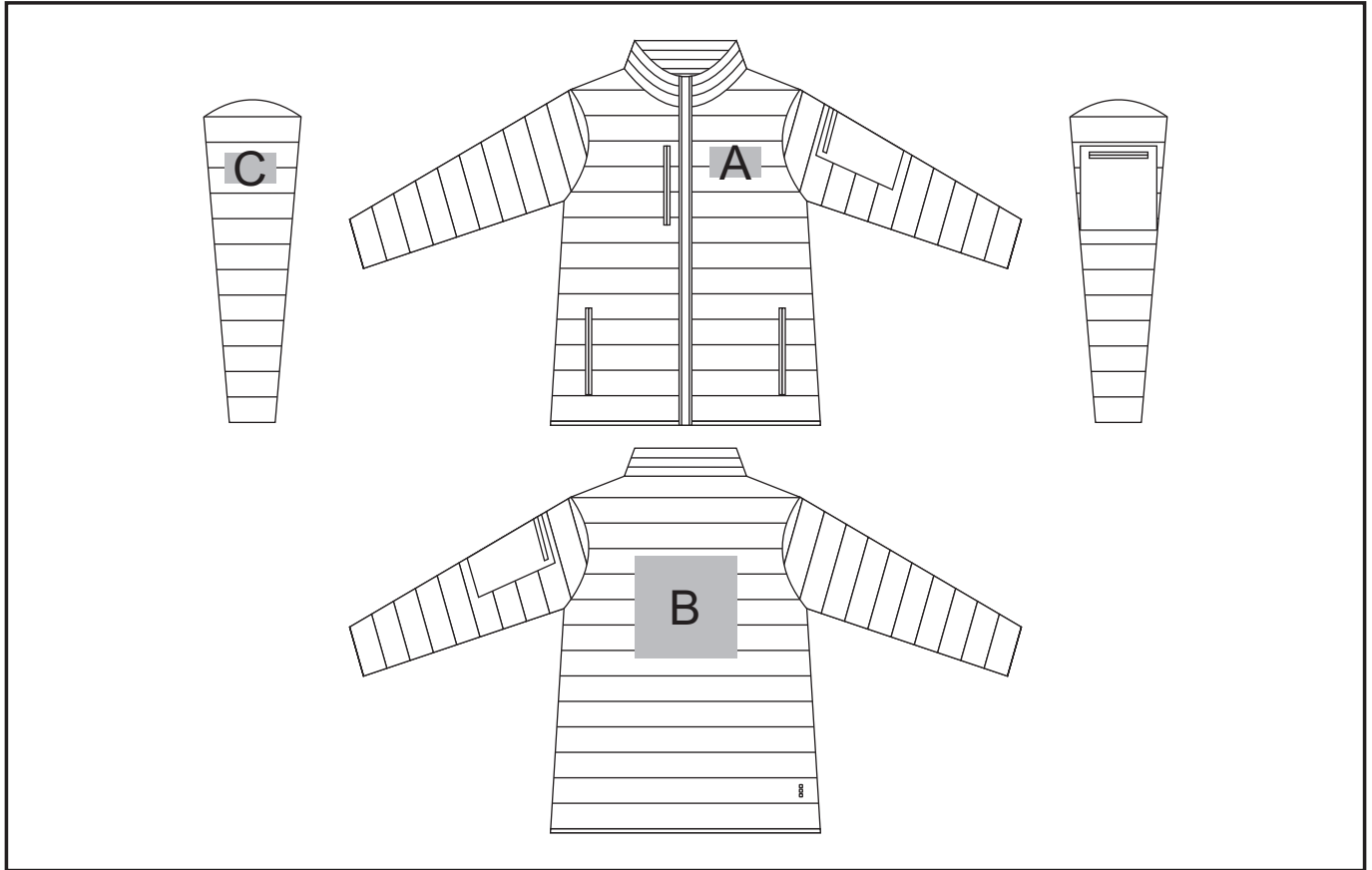


ELE-5611

Scotia Light Down Jacket - Ladies



Need to know:

- Includes 1-Position Embroidery (setup fee applies)
- **EMB inclusive parameters:** Left/Right Chest = 100mm x 100mm **OR** Back = 8000mm²
- Cannot guarantee a 100% straight branding on any clothing item with check or stripe detail.
- Please note that the panels on the garment are inconsistent from Small to XL.
- The left chest and the back will be branded in the closest panel to standard left chest and back yoke position

Branding Options:

Position A

1. Embroidery (EMB) - 9 colours
Size: 100mm diameter

Position B

1. Embroidery (EMB) - 9 colours
Size: 200mm wide x 200mm high

Position C

1. Embroidery (EMB) - 9 colours
Size: 50mm diameter