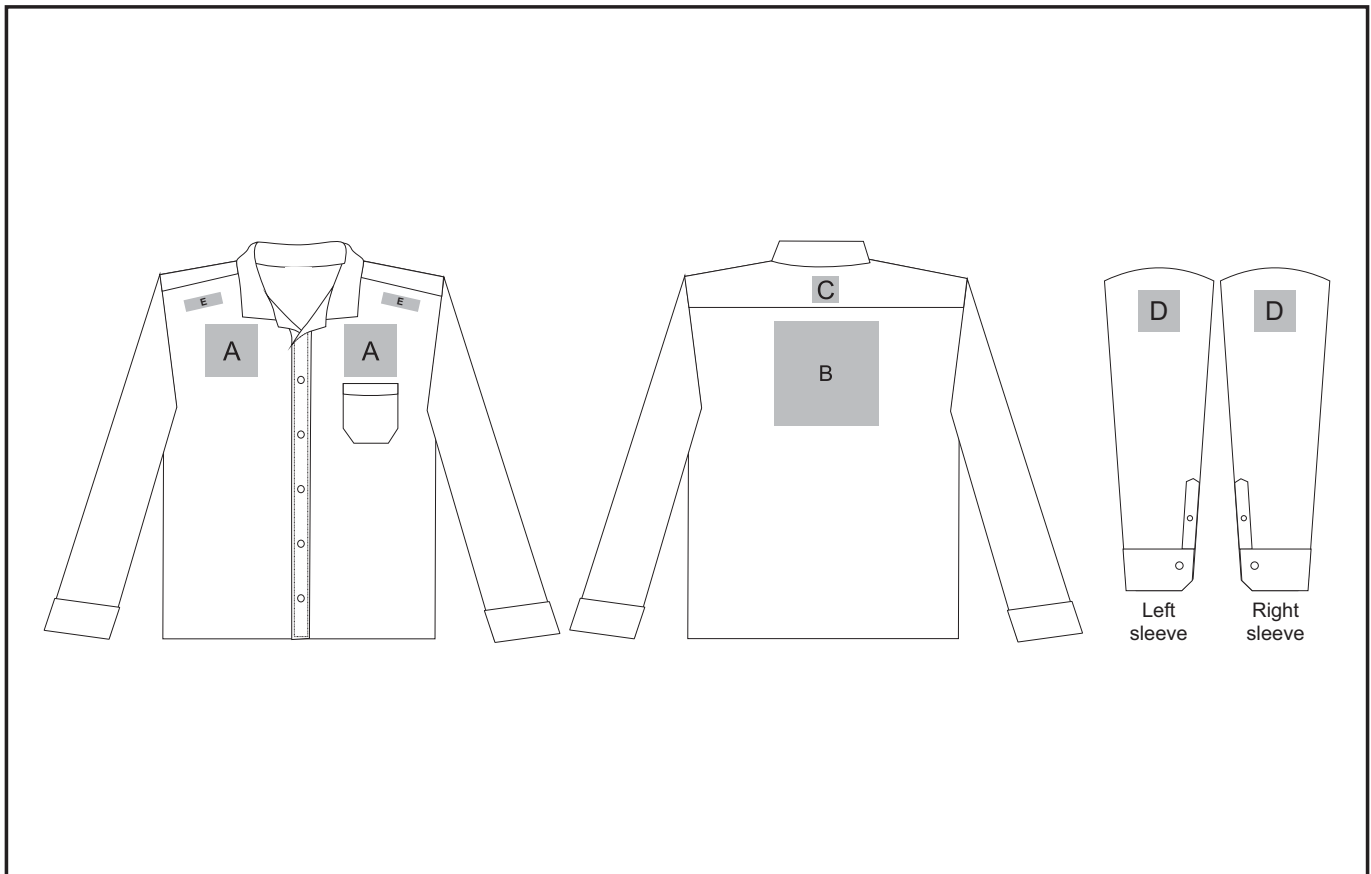


BAS-7758

Kensington Long Sleeve Shirt - Mens



Need to know:

- Includes 1-Position Embroidery OR 1 Position Digital Transfer (setup fee applies)
- Cannot guarantee a 100% straight branding on any clothing item with check or stripe detail
- EMB/DTC inclusive Parameters: Left/Right Chest=100mm x 100mm OR Back = 8000mm2
- Please note Pos E will be branded +/- 20mm from the top seam

Branding Options:

Position A

1. Embroidery (EMB) - 9 colours
Size: 100mm wide x 80mm high
2. Screen Print (SA) - 1 colour
Size: 100mm wide x 80mm high
3. Digital Transfer Clothing (DTC) - Full colour
Size: 100mm wide x 80mm high

Position B

1. Embroidery (EMB) - 9 colours
Size: 200mm wide x 200mm high
2. Screen Print (SA) - 1 colour
Size: 260mm wide x 200mm high
3. Digital Transfer Clothing (DTC) - Full colour
Size: 210mm wide x 148mm high

Position C

1. Embroidery (EMB) - 9 colours
Size: 50mm diameter
2. Digital Transfer Clothing (DTC) - Full colour
Size: 50mm wide x 50mm high

Position D

1. Embroidery (EMB) - 9 colours
Size: 80mm diameter
2. Screen Print (SA) - 1 colour
Size: 60mm wide x 60mm high
3. Digital Transfer Clothing (DTC) - Full colour
Size: 80mm wide x 80mm high

Position E

1. Digital Transfer Clothing (DTC) - Full Colour
Size: 70mm wide x 20mm high