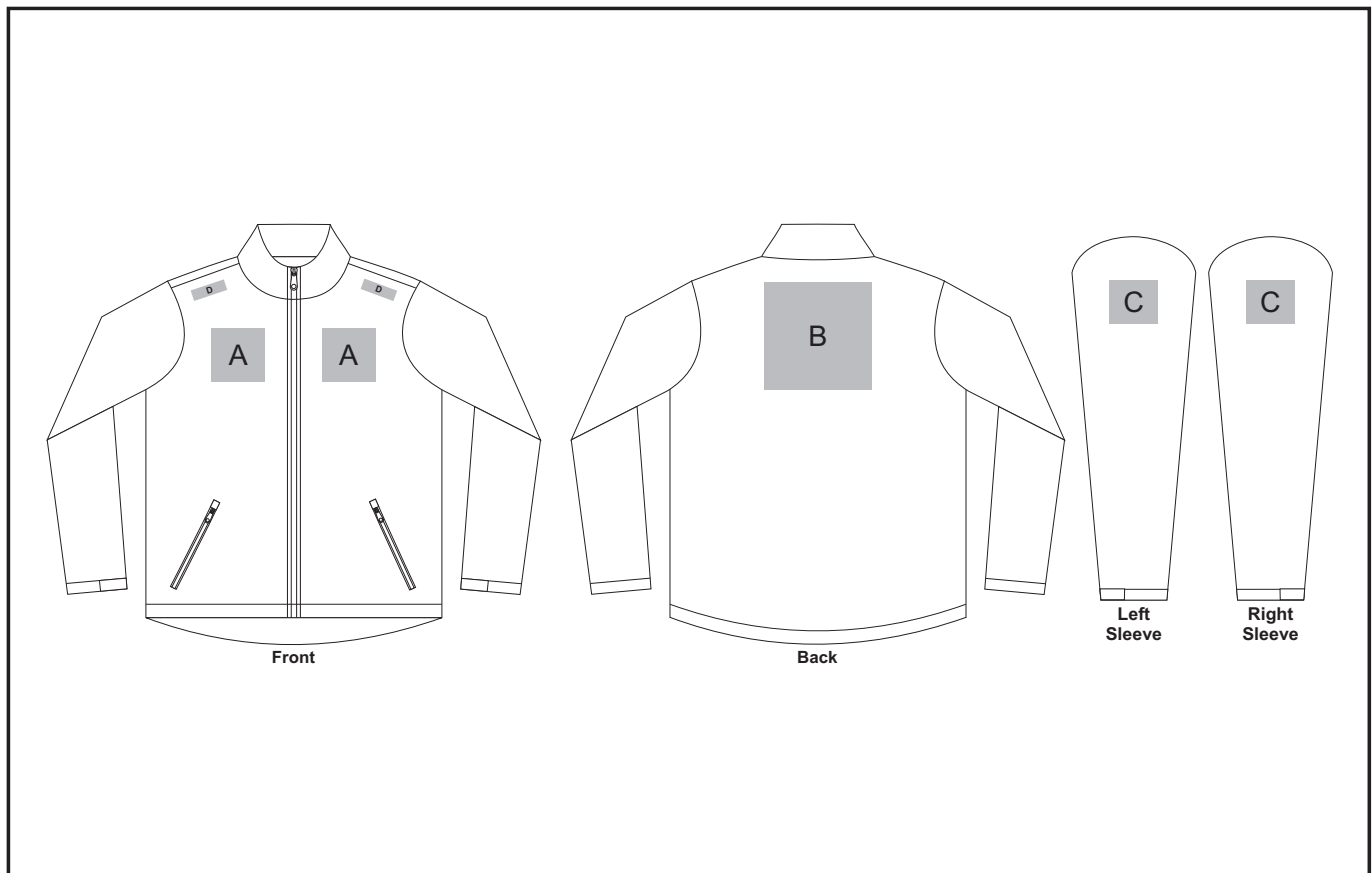


# ALT-CEJL

## Ladies Celsius Jacket



### Need to know:

- Includes 1-Position Digital Transfer (setup fee applies)
- **DTC/EMB** inclusive Parameters: Left/Right Chest or Back = 100mm x 100mm
- Please note Pos D will be branded +/- 20mm from the top seam
- Please note that the EMB will be branded through the lining of the jacket

### Branding Options:

#### **Position A**

1. Embroidery (EMB) - 9 colours  
Size: 100mm diameter
2. Deboss (BOS)  
Size: 100mm wide x 60mm high
3. Digital Transfer Clothing (DTC) - Full colour  
Size: 100mm wide x 100mm high

#### **Position B**

1. Embroidery (EMB) - 9 colours  
Size: 200mm wide x 200mm high
2. Deboss (BOS)  
Size: 150mm wide x 60mm high
3. Digital Transfer Clothing (DTC) - Full colour  
Size: 210mm wide x 148mm high

#### **Position C**

1. Embroidery (EMB) - 9 colours  
Size: 80mm diameter
2. Deboss (BOS)  
Size: 90mm wide x 60mm high
3. Digital Transfer Clothing (DTC) - Full colour  
Size: 80mm wide x 80mm high

#### **Position D**

1. Digital Transfer Clothing (DTC) - Full Colour  
Size: 70mm wide x 20mm high