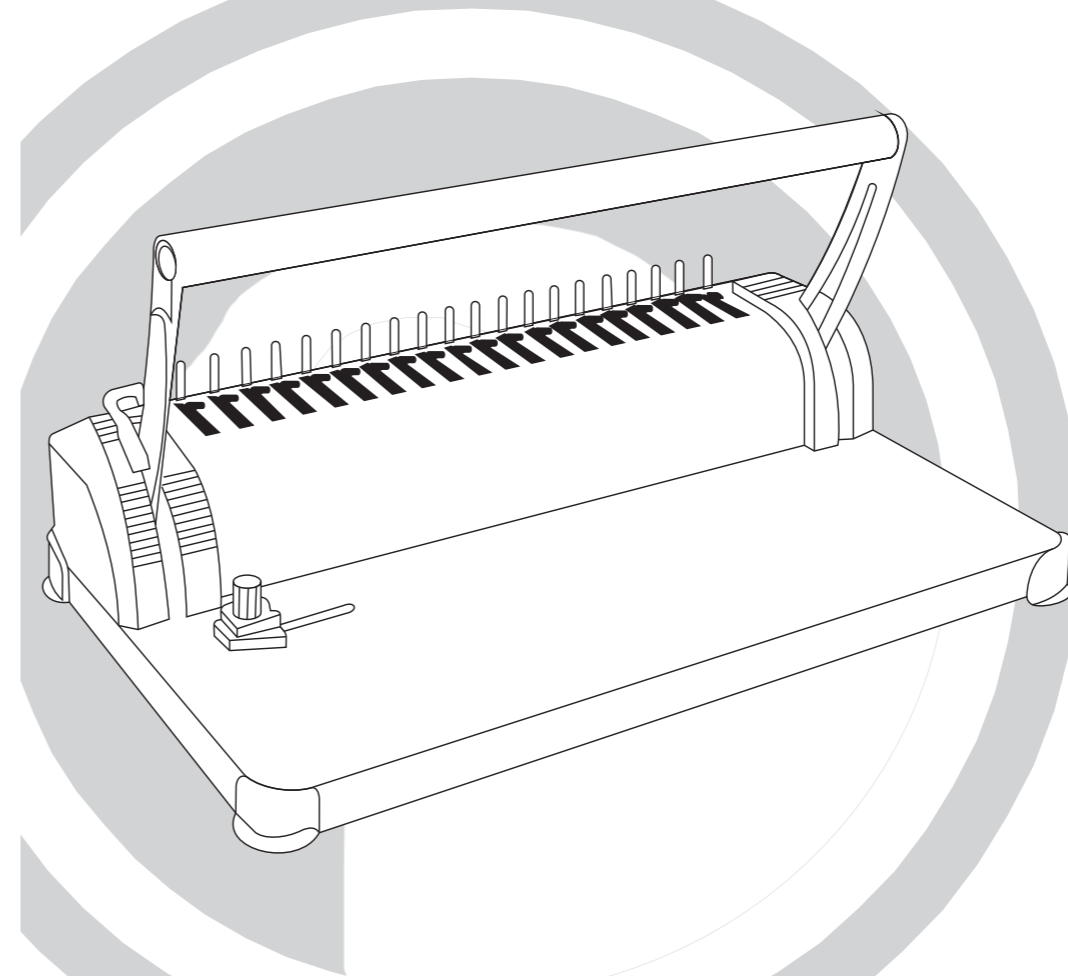




- GB** Comb Binding Machine B2950
- D** Kammbindemaschine B2950
- E** Encuadernadora de espiral B2950
- F** Machine de reliure à anneaux plastiques B2950
- P** Máquina de encadernação de argolas B2950



Parrot Products
22 Cleveland Road
Johannesburg

National Call Centre

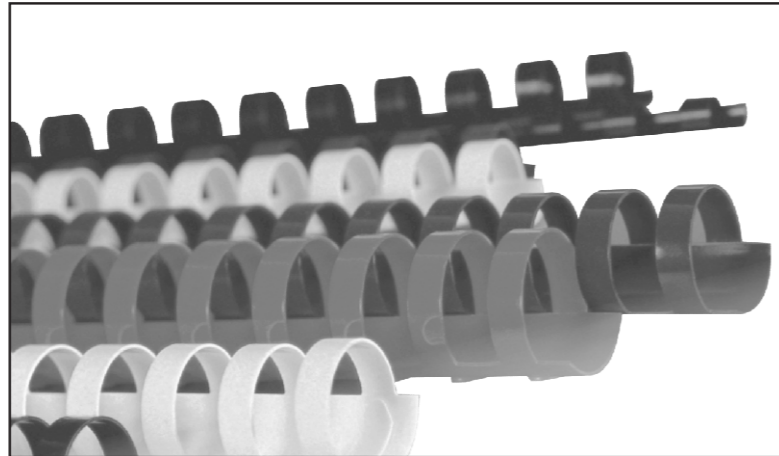
0861 BOARDS
2 6 2 7 3 7

website: www.parrotproducts.biz

Australia

1800 BOARDS
2 6 2 7 3 7

BINDING CONSUMABLES



Portuguese

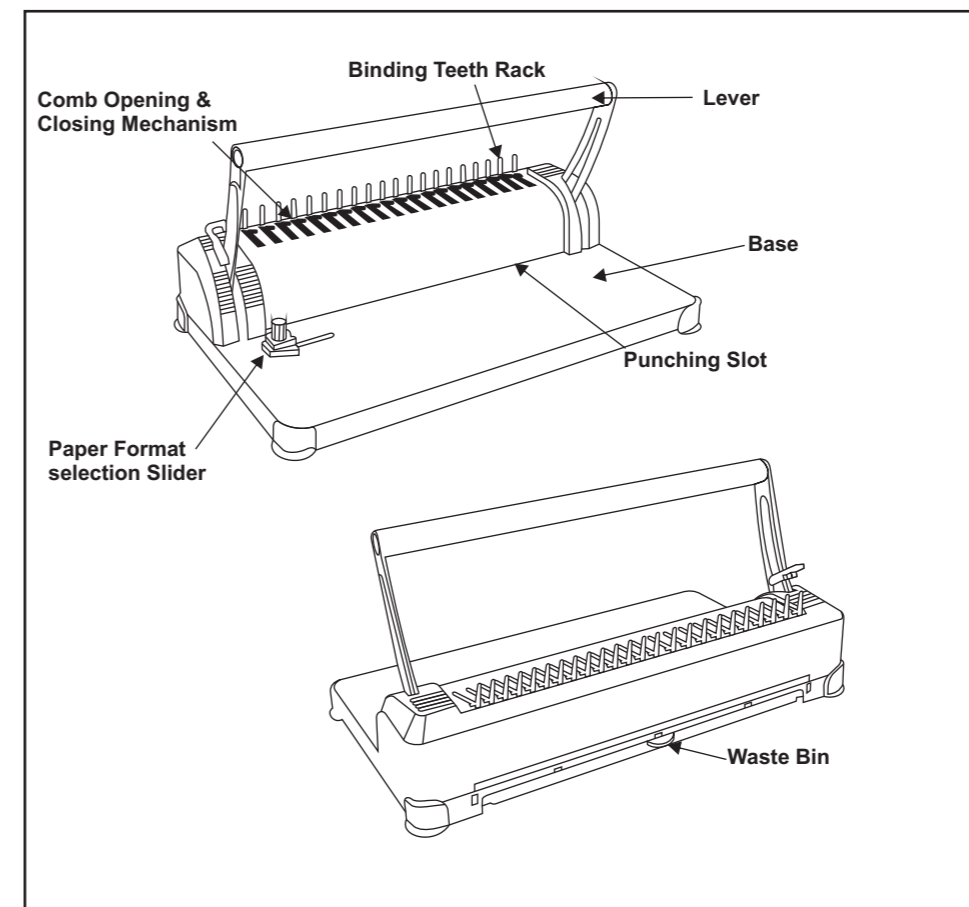
CODE	DESCRIPTION	BINDING COLOUR	CAPACITY & QTY
B1006B	Binder Element Plastic 6mm	30 sheets Black	(100)
B1006D	Binder Element Plastic 6mm	30 sheets Blue	(100)
B1006R	Binder Element Plastic 6mm	30 sheets Red	(100)
B1006W	Binder Element Plastic 6mm	30 sheets White	(100)
B1008B	Binder Element Plastic 8mm	50 sheets Black	(100)
B1008D	Binder Element Plastic 8mm	50 sheets Blue	(100)
B1008R	Binder Element Plastic 8mm	50 sheets Red	(100)
B1008W	Binder Element Plastic 8mm	50 sheets White	(100)
B1010B	Binder Element Plastic 10mm	60 sheets Black	(100)
B1010D	Binder Element Plastic 10mm	60 sheets Blue	(100)
B1010R	Binder Element Plastic 10mm	60 sheets Red	(100)
B1010W	Binder Element Plastic 10mm	60 sheets White	(100)
B1012B	Binder Element Plastic 12mm	90 sheets Black	(100)
B1012D	Binder Element Plastic 12mm	90 sheets Blue	(100)
B1012R	Binder Element Plastic 12mm	90 sheets Red	(100)
B1012W	Binder Element Plastic 12mm	90 sheets White	(100)
B1016B	Binder Element Plastic 16mm	120 sheets Black	(100)
B1016D	Binder Element Plastic 16mm	120 sheets Blue	(100)
B1016R	Binder Element Plastic 16mm	120 sheets Red	(100)
B1016W	Binder Element Plastic 16mm	120 sheets White	(100)
B1020B	Binder Element Plastic 20mm	170 sheets Black	(100)
B1020D	Binder Element Plastic 20mm	170 sheets Blue	(100)
B1020R	Binder Element Plastic 20mm	170 sheets Red	(100)
B1020W	Binder Element Plastic 20mm	170 sheets White	(100)

20

CAUTION

1. DO NOT allow children to operate this machine without adult supervision.
2. Place the machine on a level and sturdy surface to avoid injury to people or damage to the machine.
3. Test the machine before punching any original documents.
4. When punching plastic covers, place the cover between two sheets of paper to avoid slipping.
5. The machine is only designed for paper use.
6. To avoid injury, do not place your fingers near any moving parts.
7. Keep machine away from water or any other liquids.

STRUCTURE



English

1

OPERATING GUIDE

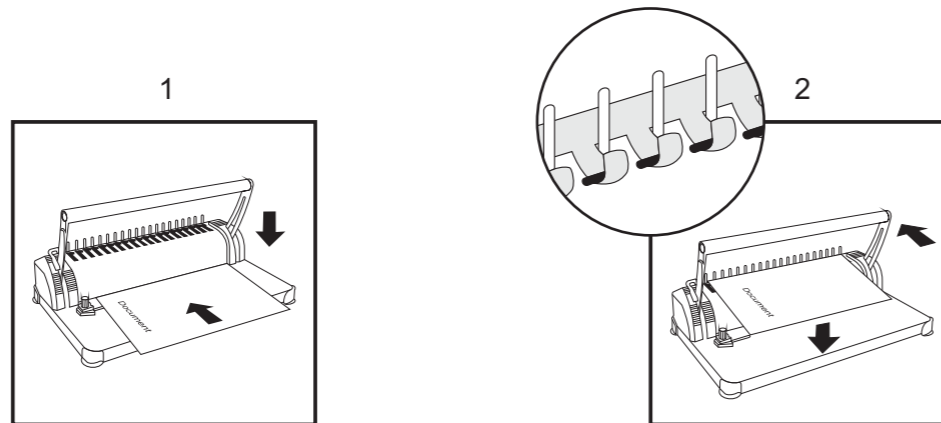
CAUTION: PLACE THE MACHINE ON A LEVEL AND STURDY SURFACE BEFORE USING

1. Punching Operation:

- Adjust the paper format selection slider for A4 or A5 documents.
- Insert the document into the punching slot and press the lever down.

2. Binding Operation:

- Place the plastic comb with the opening on top in the Binding Teeth Rack.
- Pull the lever back.
- Insert the punched sheets onto the comb and release lever.

**3. Cleaning the Waste bin:**

- Waste Bin is located in the front of the machine.

ESPECIFICAÇÕES

Capacidade de perfuração:	8 folhas (A4 80gsm)
Capacidade de encadernação:	150 folhas
Margem de papel:	3mm
Distância entre furos:	14.3mm
Furos quadrados:	N/A
Furos redondos:	N/A
Dimensão dos furos:	3mm x 8mm (quadrado)
Formato do papel:	Up to A4
Dimensões da máquina:	390mm x 231mm x 100mm
Peso líquido:	1.83kg

RESOLUÇÃO DE PROBLEMAS

Problemas	Causas	Soluções
1. A alavanca está bloqueada e não executa a perfuração.	Resíduos de papel e/ou outros materiais no interior do cortador de papel.	Esvazie o cesto de papéis.
	Capacidade de perfuração excedida.	Reduza a quantidade de páginas a perfurar – consulte o manual.
2. Margem do papel desalinhada.	Papel inserido incorrectamente.	Retire o papel e tente novamente.
	Resíduos de papel e/ou outros materiais no interior do cortador de papel.	Esvazie o cesto de papéis.
3. Papel não perfurado na totalidade e/ou de difícil remoção da máquina.	Capacidade de perfuração excedida.	Reduza a quantidade de páginas a perfurar – consulte o manual.

GUIA DE UTILIZAÇÃO

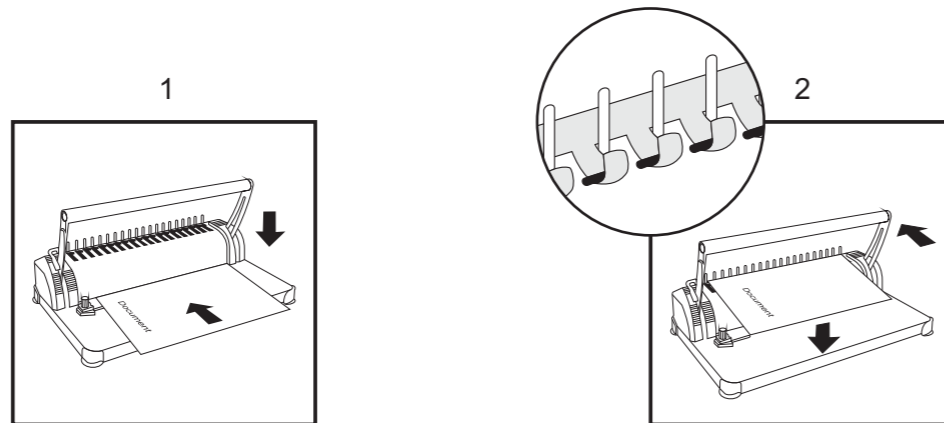
PRUDÊNCIA: COLOQUE A MÁQUINA SOBRE UMA SUPERFÍCIE PLANA E SEGURA PARA EVITAR FERIMENTOS PESSOAIS OU DANOS NA MÁQUINA.

1. Operação de perfuração:

- Ajuste o selector do formato de papel para documentos A4 ou A5.
- Insira o documento na ranhura de perfuração e pressione a alavanca para baixo.

2. Operação de encadernação:

- Coloque o pente plástico com abertura superior no conjunto de dentes de encadernação.
- Puxe a alavanca para trás.
- Insira as folhas perfuradas no pente e solte a alavanca.



3. Limpar o cesto de papéis:

- Cesto de papéis localizada na parte frontal da máquina.

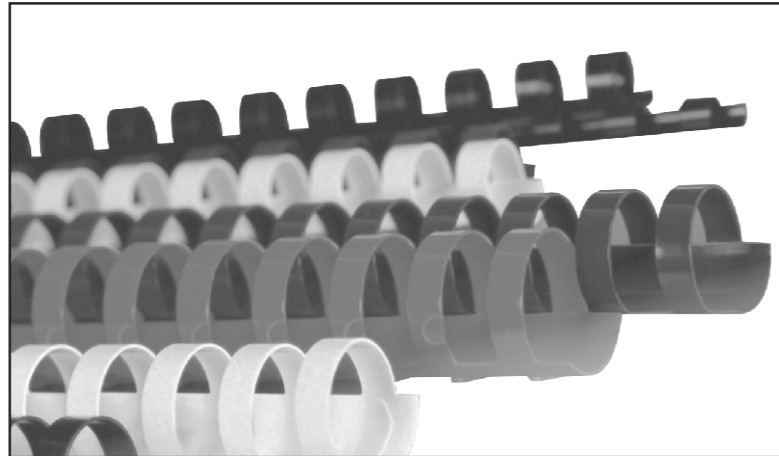
SPECIFICATIONS

Punching Capacity:	8 Sheets (A4 80gsm)
Binding Capacity:	150 Sheets
Paper Margin:	3mm
Hole Distance:	14.3mm
Square Holes:	N/A
Round Holes:	N/A
Hole Dimension:	3mm x 8mm (square)
Paper Format:	Up to A4
Machine Dimension:	390mm x 231mm x 100mm
Nett Weight:	1.83kg

TROUBLESHOOTING

Problems	Reasons	Solutions
1. The lever is stuck and cannot punch.	Scrap paper and/or other materials inside the paper cutter.	Clean the waste bin.
	Exceed the punch capacity.	Reduce amount of pages being used - refer to manual.
2. Slanting paper margin.	Paper not inserted correctly.	Remove paper and try again.
	Scrap paper and/or other materials inside the paper cutter.	Clean the waste bin.
3. Paper not completely punched and/or hard to remove from machine.	Exceed the punch capacity.	Reduce amount of pages being used - refer to manual.

BINDING CONSUMABLES



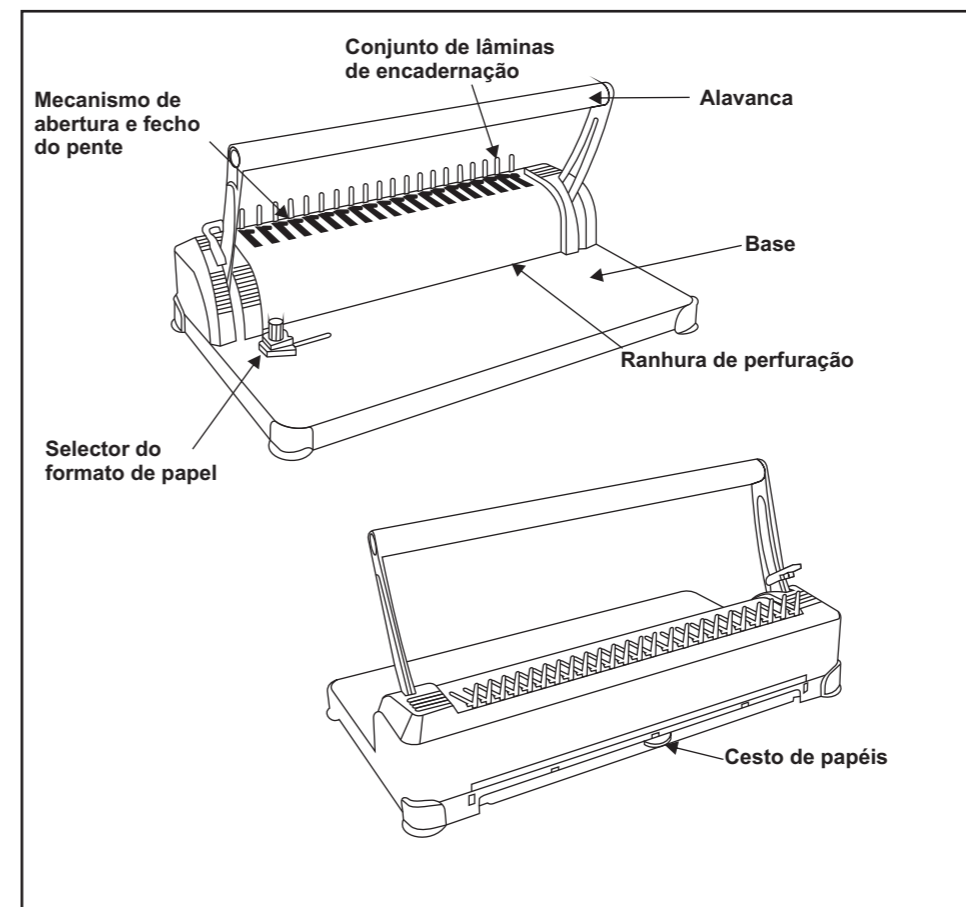
CODE	DESCRIPTION	BINDING COLOUR	CAPACITY & QTY
B1006B	Binder Element Plastic 6mm	30 sheets Black	(100)
B1006D	Binder Element Plastic 6mm	30 sheets Blue	(100)
B1006R	Binder Element Plastic 6mm	30 sheets Red	(100)
B1006W	Binder Element Plastic 6mm	30 sheets White	(100)
B1008B	Binder Element Plastic 8mm	50 sheets Black	(100)
B1008D	Binder Element Plastic 8mm	50 sheets Blue	(100)
B1008R	Binder Element Plastic 8mm	50 sheets Red	(100)
B1008W	Binder Element Plastic 8mm	50 sheets White	(100)
B1010B	Binder Element Plastic 10mm	60 sheets Black	(100)
B1010D	Binder Element Plastic 10mm	60 sheets Blue	(100)
B1010R	Binder Element Plastic 10mm	60 sheets Red	(100)
B1010W	Binder Element Plastic 10mm	60 sheets White	(100)
B1012B	Binder Element Plastic 12mm	90 sheets Black	(100)
B1012D	Binder Element Plastic 12mm	90 sheets Blue	(100)
B1012R	Binder Element Plastic 12mm	90 sheets Red	(100)
B1012W	Binder Element Plastic 12mm	90 sheets White	(100)
B1016B	Binder Element Plastic 16mm	120 sheets Black	(100)
B1016D	Binder Element Plastic 16mm	120 sheets Blue	(100)
B1016R	Binder Element Plastic 16mm	120 sheets Red	(100)
B1016W	Binder Element Plastic 16mm	120 sheets White	(100)
B1020B	Binder Element Plastic 20mm	170 sheets Black	(100)
B1020D	Binder Element Plastic 20mm	170 sheets Blue	(100)
B1020R	Binder Element Plastic 20mm	170 sheets Red	(100)
B1020W	Binder Element Plastic 20mm	170 sheets White	(100)

CODE	DESCRIPTION	BINDING COLOUR	CAPACITY & QTY
B1025B	Binder Element Plastic 25mm	220 sheets Black	(50)
B1025D	Binder Element Plastic 25mm	220 sheets Blue	(50)
B1025R	Binder Element Plastic 25mm	220 sheets Red	(50)
B1025W	Binder Element Plastic 25mm	220 sheets White	(50)
B1032B	Binder Element Plastic 32mm	240 sheets Black	(50)
B1032D	Binder Element Plastic 32mm	240 sheets Blue	(50)
B1032R	Binder Element Plastic 32mm	240 sheets Red	(50)
B1032W	Binder Element Plastic 32mm	240 sheets White	(50)
B1038B	Binder Element Plastic 38mm	320 sheets Black	(50)
B1038D	Binder Element Plastic 38mm	320 sheets Blue	(50)
B1038R	Binder Element Plastic 38mm	320 sheets Red	(50)
B1038W	Binder Element Plastic 38mm	320 sheets White	(50)
B1045B	Binder Element Plastic 45mm	350 sheets Black	(50)
B1045D	Binder Element Plastic 45mm	350 sheets Blue	(50)
B1045R	Binder Element Plastic 45mm	350 sheets Red	(50)
B1045W	Binder Element Plastic 45mm	350 sheets White	(50)
B1050B	Binder Element Plastic 50mm	420 sheets Black	(50)
B1050D	Binder Element Plastic 50mm	420 sheets Blue	(50)
B1050R	Binder Element Plastic 50mm	420 sheets Red	(50)
B1050W	Binder Element Plastic 50mm	420 sheets White	(50)

CUIDADO

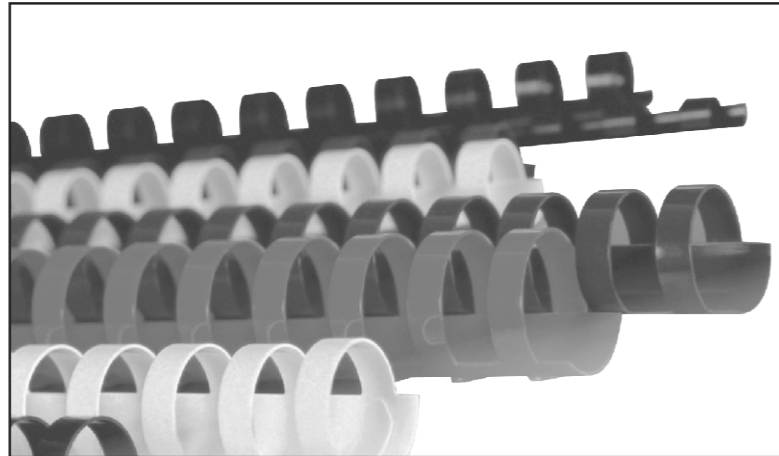
1. NÃO PERMITA que crianças utilizem esta máquina sem a supervisão de adultos.
2. Coloque a máquina sobre uma superfície plana e segura para evitar ferimentos pessoais ou danos na máquina.
3. Teste a máquina antes de perfurar quaisquer documentos originais.
4. Quando perfurar capas de plástico, coloque a capa entre duas folhas de papel para evitar que deslizem.
5. A máquina destina-se apenas a utilização com papel.
6. Para evitar ferimentos, não coloque os dedos perto de quaisquer partes móveis.
7. Mantenha a máquina afastada de água ou outros líquidos.

ESTRUTURA



BINDING CONSUMABLES

Français



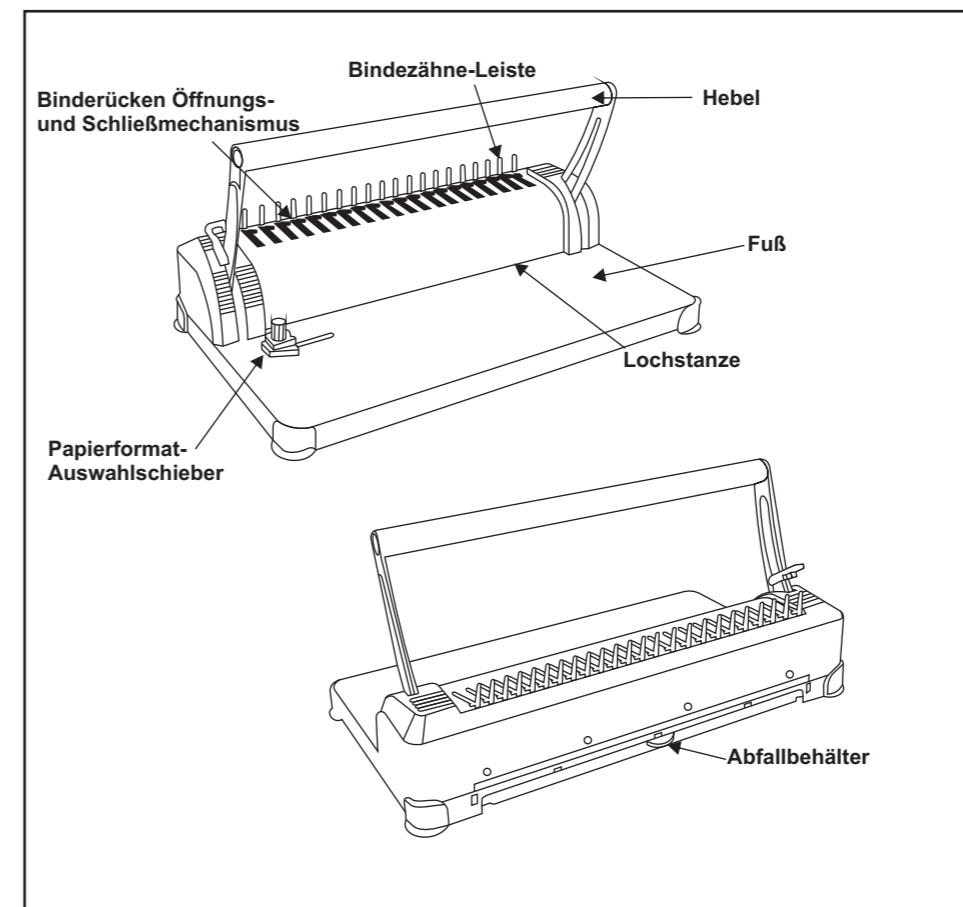
CODE	DESCRIPTION	BINDING COLOUR	CAPACITY & QTY
B1006B	Binder Element Plastic 6mm	30 sheets Black	(100)
B1006D	Binder Element Plastic 6mm	30 sheets Blue	(100)
B1006R	Binder Element Plastic 6mm	30 sheets Red	(100)
B1006W	Binder Element Plastic 6mm	30 sheets White	(100)
B1008B	Binder Element Plastic 8mm	50 sheets Black	(100)
B1008D	Binder Element Plastic 8mm	50 sheets Blue	(100)
B1008R	Binder Element Plastic 8mm	50 sheets Red	(100)
B1008W	Binder Element Plastic 8mm	50 sheets White	(100)
B1010B	Binder Element Plastic 10mm	60 sheets Black	(100)
B1010D	Binder Element Plastic 10mm	60 sheets Blue	(100)
B1010R	Binder Element Plastic 10mm	60 sheets Red	(100)
B1010W	Binder Element Plastic 10mm	60 sheets White	(100)
B1012B	Binder Element Plastic 12mm	90 sheets Black	(100)
B1012D	Binder Element Plastic 12mm	90 sheets Blue	(100)
B1012R	Binder Element Plastic 12mm	90 sheets Red	(100)
B1012W	Binder Element Plastic 12mm	90 sheets White	(100)
B1016B	Binder Element Plastic 16mm	120 sheets Black	(100)
B1016D	Binder Element Plastic 16mm	120 sheets Blue	(100)
B1016R	Binder Element Plastic 16mm	120 sheets Red	(100)
B1016W	Binder Element Plastic 16mm	120 sheets White	(100)
B1020B	Binder Element Plastic 20mm	170 sheets Black	(100)
B1020D	Binder Element Plastic 20mm	170 sheets Blue	(100)
B1020R	Binder Element Plastic 20mm	170 sheets Red	(100)
B1020W	Binder Element Plastic 20mm	170 sheets White	(100)

16

VORSICHT

1. Kinder dürfen diese Maschine ohne Aufsicht durch Erwachsene nicht benutzen.
2. Stellen Sie die Maschine auf eine stabile und ebene Oberfläche, um Beschädigung der Maschine und Verletzungen von Personen zu vermeiden.
3. Testen Sie die Maschine, bevor Sie Originaldokumente lochen.
4. Legen Sie beim Lochen von Kunststoffeinbänden den Einband zwischen zwei Bögen Papier, um ein Abrutschen zu verhindern.
5. Die Maschine ist nur für den Gebrauch mit Papier gedacht.
6. Halten Sie Ihre Finger von beweglichen Teilen fern, um Verletzungen zu vermeiden.
7. Halten Sie die Maschine von Wasser oder anderen Flüssigkeiten fern.

AUFBAU



Deutsch

5

BEDIENUNGSANLEITUNG

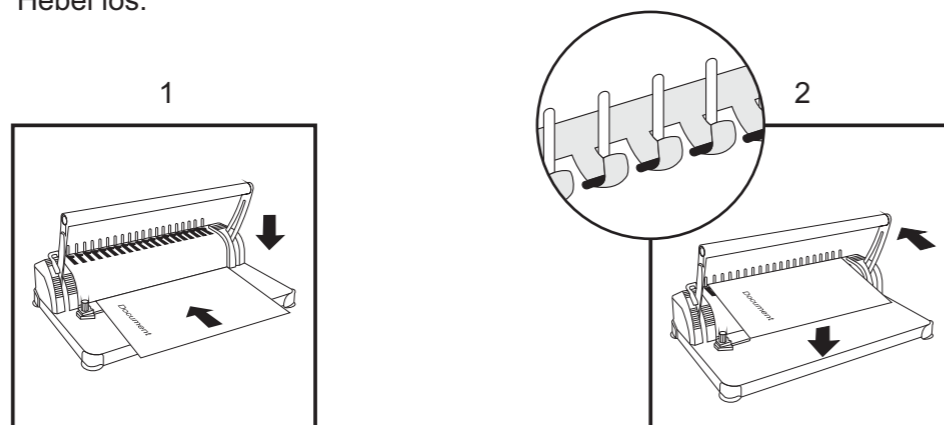
VORSICHT: STELLEN SIE DIE MASCHINE AUF EINE STABILE UND EBENE OBERFLÄCHE, UM BESCHÄDIGUNG DER MASCHINE UND VERLETZUNGEN VON PERSONEN ZU VERMEIDEN.

1. Lochen:

- Justieren Sie den Papierformat-Auswahlschieber für A4 oder A5 Dokumente.
- Stecken Sie das Dokument in die Lochstanze und drücken Sie den Hebel nach unten.

2. Binden:

- Legen Sie den Kunststoffücken mit der Öffnung nach oben in die Bindezahn-Leiste.
- Ziehen Sie den Hebel nach hinten.
- Legen Sie die gelochten Bögen auf den Binderücken und lassen Sie den Hebel los.



3. Abfallbehälter leeren:

- Der Abfallbehälter befindet sich an der Vorderseite des Gerätes.

SPÉCIFICATIONS

Capacité de reliure:	8 Feuilles (A4 80gsm)
Capacité de feuilles:	150 Feuilles
Marge papier:	3mm
Distance entre les trous:	14.3mm
Trous carrés:	N/A
Trous ronds:	N/A
Dimensions des trous:	3mm x 8mm (carrés)
Format du papier:	Up to A4
Dimensions de la machine:	390mm x 231mm x 100mm
Poids net:	1.83kg

DÉPANNAGE

Problèmes	Causes	Solutions
1. Le levier est bloqué : impossible de perforer.	Papier et/ou autre matériau coincé à l'intérieur du mécanisme de coupe.	Nettoyez le bac de récupération.
	Capacité de perforation dépassée.	Réduisez le nombre de pages à perforer – voir le manuel.
2. Marge papier en biais.	Le papier est mal inséré.	Enlevez le papier et réessayez.
	Papier et/ou autre matériau coincé à l'intérieur du mécanisme de coupe.	Nettoyez le bac de récupération.
3. Le papier n'est pas complètement perforé et/ou il est difficile de le retirer de la machine.	Capacité de perforation dépassée.	Réduisez le nombre de pages à perforer – voir le manuel.

GUIDE DE FONCTIONNEMENT

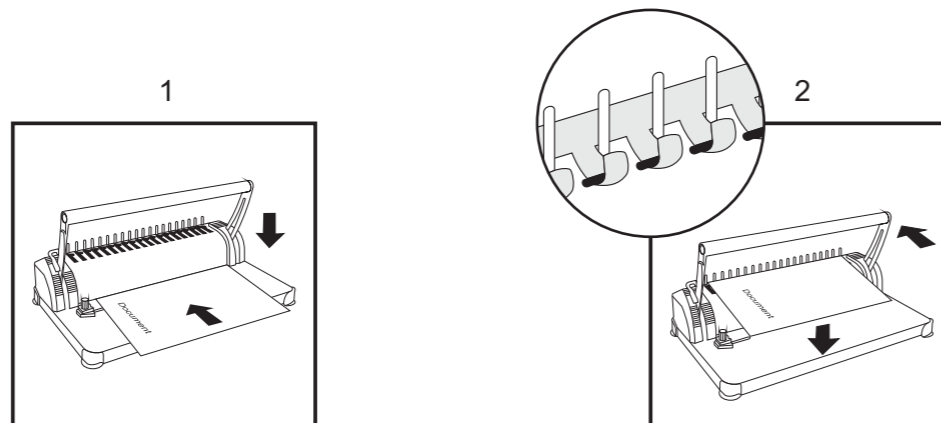
MISE EN GARDE: POUR ÉVITER DE VOUS BLESSER OU D'ENDOMMAGER LA MACHINE, PLACEZ-LA SUR UNE SURFACE DE NIVEAU ET SOLIDE.

1. Fonctionnement de la perforation:

- Ajuster la réglette de sélection du format papier pour les documents A4 ou A5.
- Insérez le document dans la fente de perforation et faites descendre le levier.

2. Fonctionnement de la reliure:

- Placez l'anneau plastique dans le bras denté, l'ouverture de l'anneau vers le haut.
- Tirez le levier vers l'arrière.
- Insérez les feuilles perforées dans l'anneau puis relâchez le levier.



3. Nettoyage du bac de récupération:

- Bac de récupération à l'avant de la machine.

TECHNISCHE DATEN

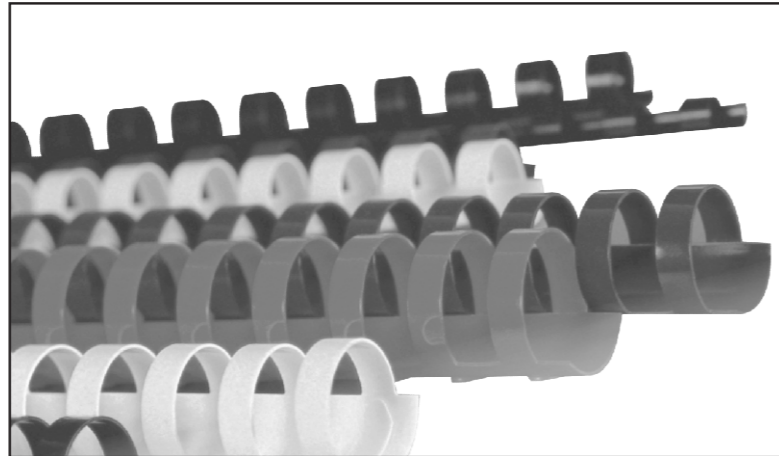
Lochkapazität:	8 Sheets (A4 80gsm)
Bindenkapazität:	150 Sheets
Papierrand:	3mm
Lochabstand:	14.3mm
Quadratische Löcher:	N/A
Runde Löcher:	N/A
Lochabmessungen:	3mm x 8mm (square)
Papierformat:	Up to A4
Geräteabmessungen:	390mm x 231mm x 100mm
Gewicht (netto):	1.83kg

FEHLERBESEITIGUNG

Probleme	Gründe	Lösungen
1. Der Hebel ist festgeklemmt und kann nicht lochen.	Abfallpapier und/oder andere Materialien haben sich im Locher festgeklemmt.	Leeren Sie den Abfallbehälter.
	Die Lochkapazität ist überschritten.	Verringern Sie die Anzahl der zu lochenden Seiten – siehe Bedienungsanleitung.
2. Schiefer Papierrand.	Papier wurde nicht korrekt eingelegt.	Nehmen Sie das Papier heraus und versuchen Sie es noch einmal.
	Abfallpapier und/oder andere Materialien haben sich im Locher festgeklemmt.	Leeren Sie den Abfallbehälter.
3. Papier ist nicht vollständig gelocht und/oder nur schwer aus dem Gerät zu nehmen.	Die Lochkapazität ist überschritten.	Verringern Sie die Anzahl der zu lochenden Seiten – siehe Bedienungsanleitung.

BINDING CONSUMABLES

Deutsch



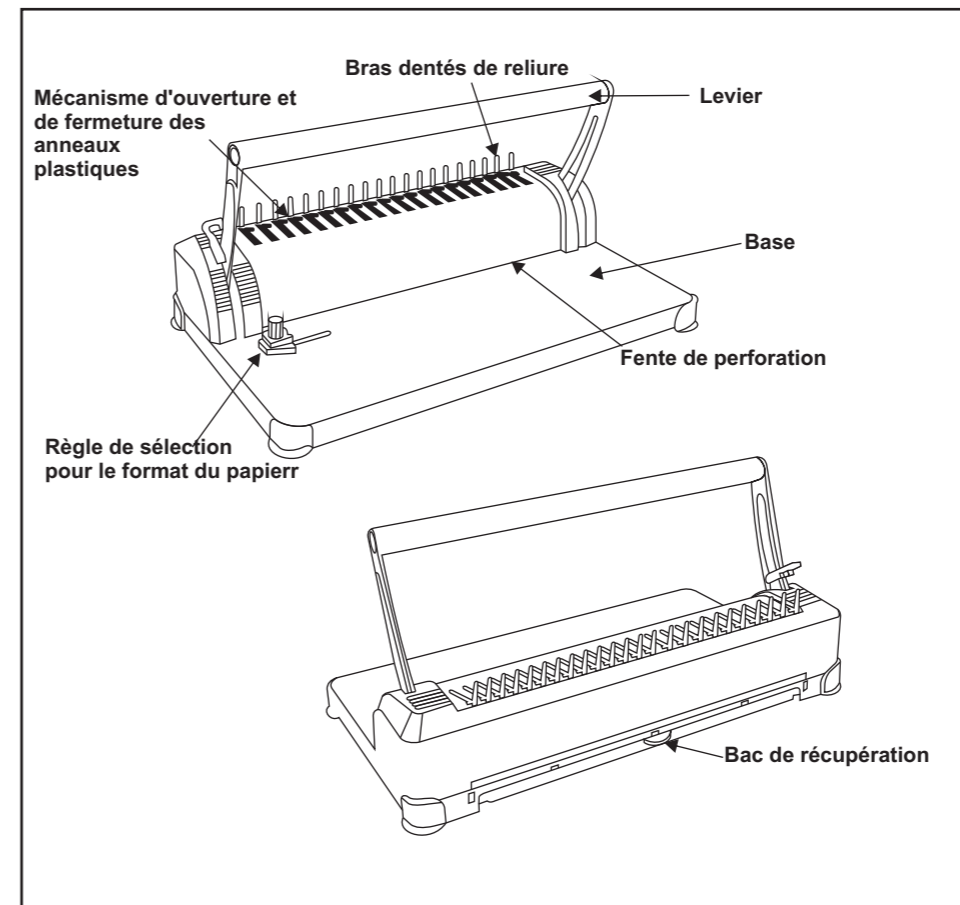
CODE	DESCRIPTION	BINDING COLOUR	CAPACITY & QTY
B1006B	Binder Element Plastic 6mm	30 sheets Black	(100)
B1006D	Binder Element Plastic 6mm	30 sheets Blue	(100)
B1006R	Binder Element Plastic 6mm	30 sheets Red	(100)
B1006W	Binder Element Plastic 6mm	30 sheets White	(100)
B1008B	Binder Element Plastic 8mm	50 sheets Black	(100)
B1008D	Binder Element Plastic 8mm	50 sheets Blue	(100)
B1008R	Binder Element Plastic 8mm	50 sheets Red	(100)
B1008W	Binder Element Plastic 8mm	50 sheets White	(100)
B1010B	Binder Element Plastic 10mm	60 sheets Black	(100)
B1010D	Binder Element Plastic 10mm	60 sheets Blue	(100)
B1010R	Binder Element Plastic 10mm	60 sheets Red	(100)
B1010W	Binder Element Plastic 10mm	60 sheets White	(100)
B1012B	Binder Element Plastic 12mm	90 sheets Black	(100)
B1012D	Binder Element Plastic 12mm	90 sheets Blue	(100)
B1012R	Binder Element Plastic 12mm	90 sheets Red	(100)
B1012W	Binder Element Plastic 12mm	90 sheets White	(100)
B1016B	Binder Element Plastic 16mm	120 sheets Black	(100)
B1016D	Binder Element Plastic 16mm	120 sheets Blue	(100)
B1016R	Binder Element Plastic 16mm	120 sheets Red	(100)
B1016W	Binder Element Plastic 16mm	120 sheets White	(100)
B1020B	Binder Element Plastic 20mm	170 sheets Black	(100)
B1020D	Binder Element Plastic 20mm	170 sheets Blue	(100)
B1020R	Binder Element Plastic 20mm	170 sheets Red	(100)
B1020W	Binder Element Plastic 20mm	170 sheets White	(100)

8

MISE EN GARDE

1. Ne laissez pas les enfants faire fonctionner cette machine sans la surveillance d'un adulte.
2. Pour éviter de vous blesser ou d'endommager la machine, placez-la sur une surface de niveau et solide.
3. Testez la machine avant de relier votre document original.
4. Lorsqu'il s'agit de relier des couvertures en plastique, placez la couverture entre deux feuilles de papier pour éviter qu'elle ne glisse.
5. La machine n'est conçue que pour une utilisation sur papier.
6. Pour éviter toute blessure, ne placez pas vos doigts à proximité des pièces en mouvement.
7. Placez la machine à distance de l'eau ou de tout autre liquide.

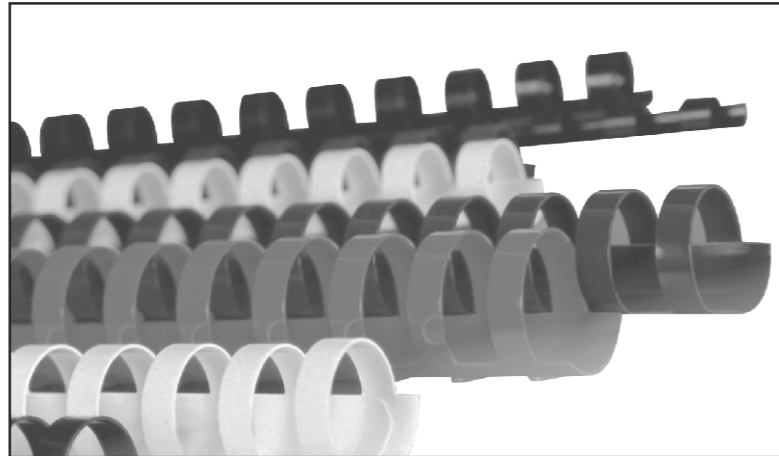
STRUCTURE



Français

13

BINDING CONSUMABLES

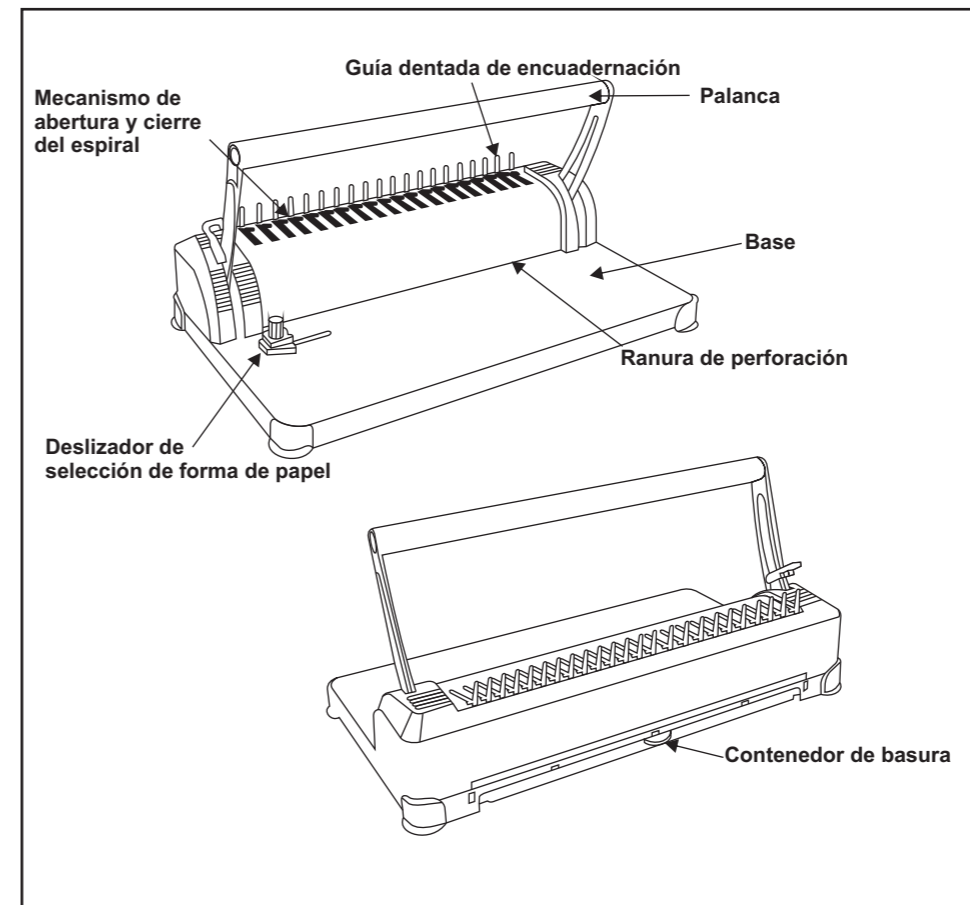


CODE	DESCRIPTION	BINDING COLOUR	CAPACITY & QTY
B1006B	Binder Element Plastic 6mm	30 sheets Black	(100)
B1006D	Binder Element Plastic 6mm	30 sheets Blue	(100)
B1006R	Binder Element Plastic 6mm	30 sheets Red	(100)
B1006W	Binder Element Plastic 6mm	30 sheets White	(100)
B1008B	Binder Element Plastic 8mm	50 sheets Black	(100)
B1008D	Binder Element Plastic 8mm	50 sheets Blue	(100)
B1008R	Binder Element Plastic 8mm	50 sheets Red	(100)
B1008W	Binder Element Plastic 8mm	50 sheets White	(100)
B1010B	Binder Element Plastic 10mm	60 sheets Black	(100)
B1010D	Binder Element Plastic 10mm	60 sheets Blue	(100)
B1010R	Binder Element Plastic 10mm	60 sheets Red	(100)
B1010W	Binder Element Plastic 10mm	60 sheets White	(100)
B1012B	Binder Element Plastic 12mm	90 sheets Black	(100)
B1012D	Binder Element Plastic 12mm	90 sheets Blue	(100)
B1012R	Binder Element Plastic 12mm	90 sheets Red	(100)
B1012W	Binder Element Plastic 12mm	90 sheets White	(100)
B1016B	Binder Element Plastic 16mm	120 sheets Black	(100)
B1016D	Binder Element Plastic 16mm	120 sheets Blue	(100)
B1016R	Binder Element Plastic 16mm	120 sheets Red	(100)
B1016W	Binder Element Plastic 16mm	120 sheets White	(100)
B1020B	Binder Element Plastic 20mm	170 sheets Black	(100)
B1020D	Binder Element Plastic 20mm	170 sheets Blue	(100)
B1020R	Binder Element Plastic 20mm	170 sheets Red	(100)
B1020W	Binder Element Plastic 20mm	170 sheets White	(100)

PRECAUCIÓN

1. NO PERMITA que los niños utilicen esta máquina sin la supervisión de un adulto.
2. Coloque la máquina sobre una superficie nivelada y sólida con el fin de evitar causar lesiones a personas o daños a la máquina.
3. Pruebe la máquina antes de perforar cualquier documento original.
4. Cuando se perfora tapas de plástico, coloque las tapas entre dos hojas de papel para evitar que ésta se deslice.
5. La máquina se encuentra diseñada sólo para uso con papel.
6. Para evitar lesiones, no coloque los dedos cerca de cualquier parte móvil.
7. Mantenga la máquina alejada de agua u otros líquidos.

ESTRUCTURA



GUÍA DE FUNCIONAMIENTO

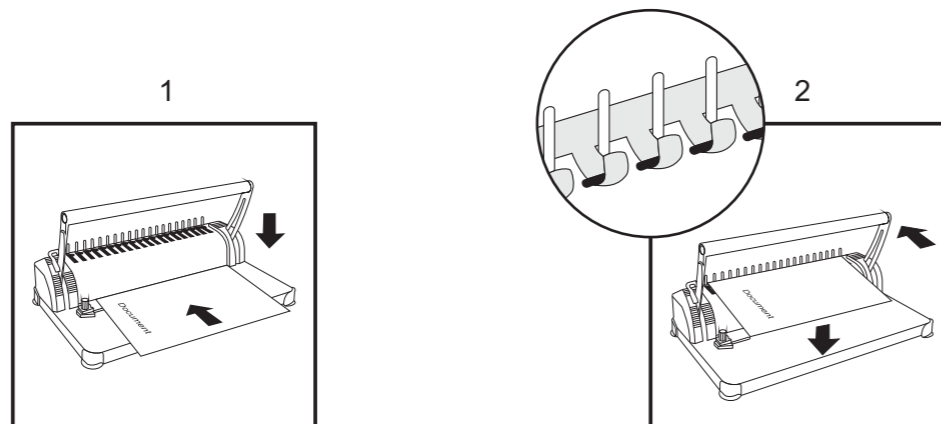
PRECAUCIÓN: COLOQUE LA MÁQUINA SOBRE UNA SUPERFICIE NIVELADA Y SÓLIDA CON EL FIN DE EVITAR CAUSAR LESIONES A PERSONAS O DAÑOS A LA MÁQUINA.

1. Operación de perforación:

- Ajuste el deslizador de selección de formato de papel para documentos A4 o A5.
- Inserte el documento en la ranura de perforación y presione la palanca hacia abajo.

2. Operación de encuadernación:

- Coloque el espiral de plástico con la abertura hacia arriba en la guía dentada de encuadernación.
- Tire de la palanca hacia atrás.
- Inserte las hojas perforadas en el espiral y suelte la palanca.



3. Limpieza del contenedor de basura:

- Contenedor de basura ubicado en la parte delantera de la máquina.

ESPECIFICACIONES

Capacidad de perforado:	8 hojas (A4 80gsm)
Capacidad de encuadernación:	150 hojas
Margen de papel:	3mm
Distancia del orificio:	14.3mm
Orificios cuadraros:	N/A
Orificios redondos:	N/A
Dimensiones del orificio:	3mm x 8mm (square)
Formato de papel:	Up to A4
Dimensiones de la máquina:	390mm x 231mm x 100mm
Peso neto:	1.83kg

SOLUCIÓN

Problemas	Razones	Soluciones
1. La palanca se traba y no se puede perforar.	Papel y/u otros materiales atorados dentro de la cortadora de papel.	Limpe el contenedor de basura.
	Capacidad de perforado excedida.	Reduzca la cantidad de páginas que se desea perforar. Consulte el manual.
2. Margen de papel torcido.	El papel no está insertado de forma correcta.	Extraiga el papel e intente nuevamente.
	Papel y/u otros materiales atorados dentro de la cortadora de papel.	Limpe el contenedor de basura.
3. El papel no es perforado por completo y/o es difícil extraerlo de la máquina.	Capacidad de perforado excedida.	Reduzca la cantidad de páginas que se desea perforar. Consulte el manual.