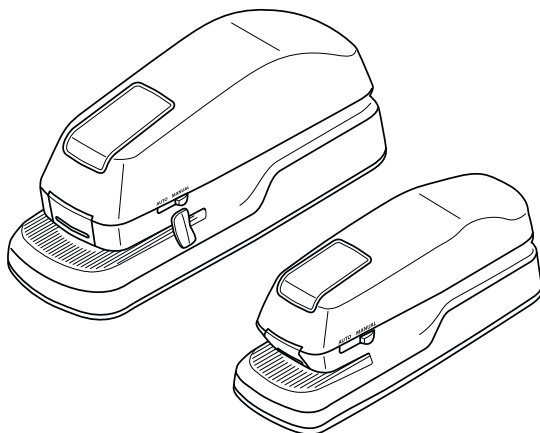
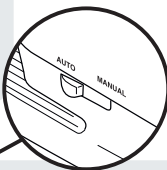
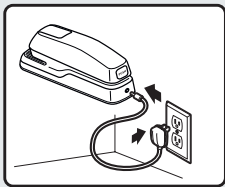


Optima 20E / GripE

Rapid®

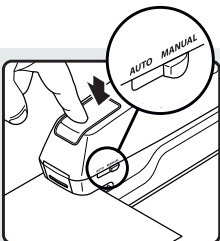
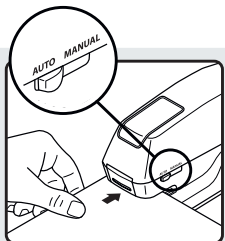
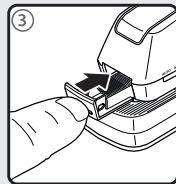
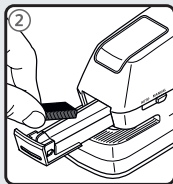
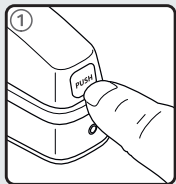
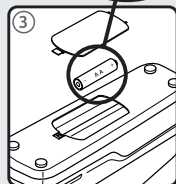
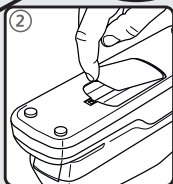
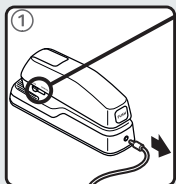


4	LV Lietošanas instrukcija	31
6	LT Naudojimosi instrukcijos	33
10	PL Instrukcja obsługi	35
12	CZ Návod k obsluze	37
14	SK Návod na použitie	39
17	HU Használati útmutató	41
19	RO Manual tehnic	43
21	RU Руководство по эксплуатации	45
23	UA Інструкція з експлуатації	47
25	KZ Пайдалану нұсқаулары	49
27	TR Kullanım talimatları	52
29	GR Οδηγίες λειτουργίας	53
	AR تعليمات التشغيل	56
	GB Operating instructions	
	DE Betriebsanleitung	
	FR Notice technique	
	NL Bedieningsvoorschriften	
	ES Manual de instrucciones	
	IT Istruzioni per l'uso	
	PT Instruções de utilização	
	DK Betjeningsvejledning	
	NO Instruksjoner for bruk	
	SE Bruksanvisning	
	FI Käyttöohjeet	
	EE Kasutusjuhend	



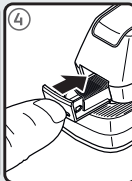
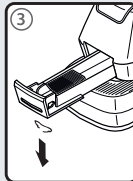
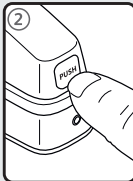
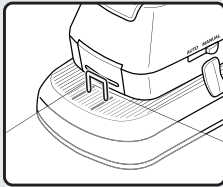
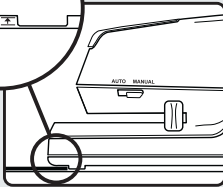
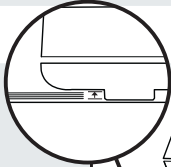
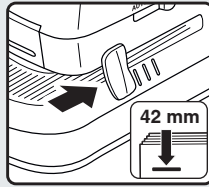
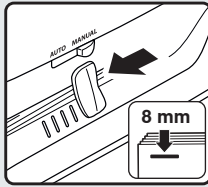
Optima®20E
x 6 AA

Optima®GripE
x 4 AA





Optima 20E



Optima 20E / GripE

Operating instructions - Original

GB

Intended use

This product is intended to be used for stapling paper or similar materials. The product should only be used in offices or similar environments, such as shops and households. All use other than described in this manual is seen as unintended use.

For your safety

⚠ WARNING

Please read all the safety information and the instructions. The manufacturer is not liable for cases of material damage or personal injury caused by incorrect handling or non compliance with the safety instructions. In such cases, the warranty will be voided.

- Keep all safety information and instructions for future reference and pass them on to subsequent users of the device.
- This device is not intended for use by persons (including children) with restricted physical, sensory or intellectual capability or lack of experience and/or knowledge, unless they are supervised by a person who is responsible for their safety or provides them with instructions on how to use the device. Children should be supervised in order to ensure that they do not play with the device.
- Check the device and cable (and if applicable, the adapter) for any damage before use. If there is any visible damage, a strong odour, or excessive overheating of components, unplug all the connections immediately and stop using the device.
- Use the device in a suitable, properly installed and easily accessible mains power socket. Make sure the device can be disconnected from the mains at all times.
- If applicable, use only the supplied AC adapter with the device. Other AC adapters may damage the device. Do not use the supplied AC adapter with other devices.
- Prior to connecting to the mains, make sure your local mains voltage matches the rating indicated on the device.
- Do not drop or hit the device.
- Do not attempt to open, modify or repair the device. Do not drop, puncture, break or expose to high pressure.
- Alterations to the device and technical modifications are not permitted.
- Product Temperature range for operation = +5°C / +40°C




Caution - Safe use of batteries

- Only use the battery type indicated on the bottom of the product. **⚠ WARNING!** Risk of explosion.
- Be careful not to short-circuit batteries. Do not throw batteries into fire. Batteries that are not rechargeable must not be recharged. Do not replace an incorrect type of battery. Do not leave any used batteries in the device. These can corrode, releasing chemicals that harm your health and the device. When not in use for a long time, remove the batteries from the device to prevent them from leaking.
- Batteries may not be disposed of with the usual domestic waste. They may contain toxic heavy metals and are subject to hazard our waste regulations. For this reason, dispose of used batteries at a local collection point. Make sure to follow the battery manufacturer's instructions.

Guarantee

Guarantee of 5 years. For terms and conditions see www.office.rapid.com. Australia and New Zealand customers, please refer to the warranty against defects provided separately to this manual.

Waste Electrical and Electronic Equipment (WEEE)

 Electrical and electronic devices contain materials and substances that can have damaging effects on human health and the environment. This symbol indicates that this device must not be treated as unsorted municipal waste but must be collected separately. Dispose of the device via a collection point for the recycling of waste electrical and electronic equipment within the EU, UK and in other European countries that operate separate collection systems for waste electrical and electronic equipment. By disposing of the device in the proper manner, you help to avoid possible hazards for the environment and public health that could otherwise be caused by improper treatment of waste equipment. The recycling of materials contributes to the conservation of natural resources.

Meaning of visual signals (Optima 20E)