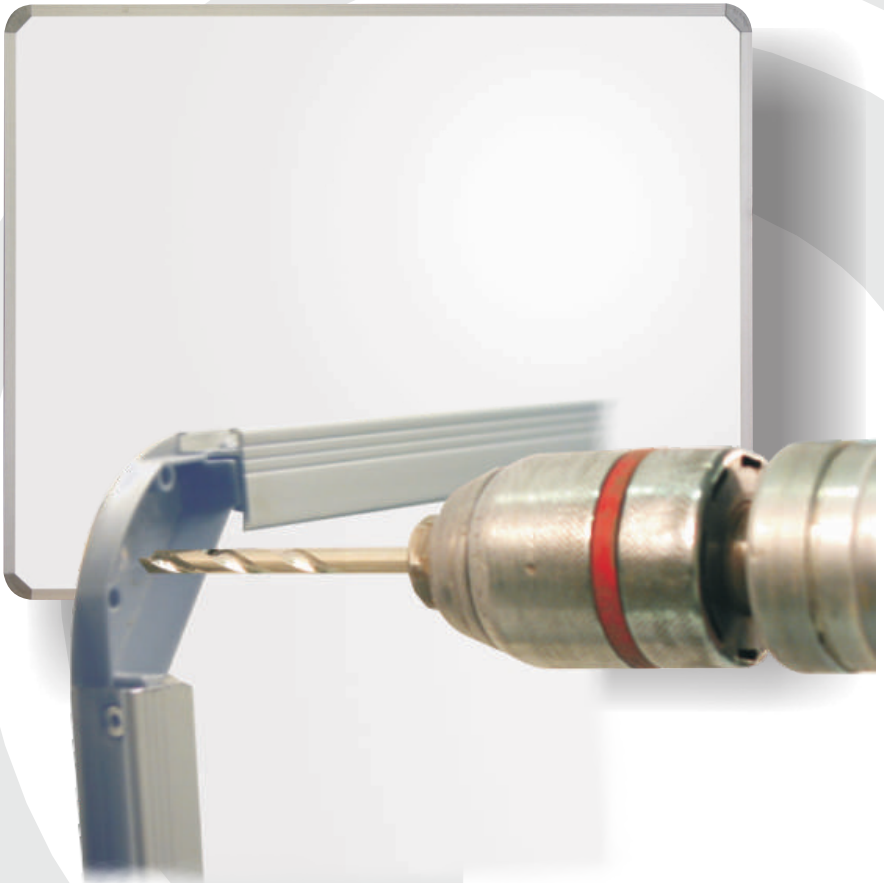




## Magnetic / Non Magnetic Boards

Mounting Instructions For Aluminium Frames



Tel: (RSA) 010 140 4900 / Email: [sales@parrot.co.za](mailto:sales@parrot.co.za)  
[www.parrot.co.za](http://www.parrot.co.za)

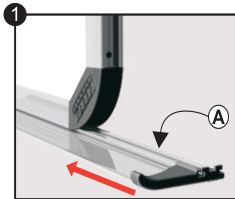
# Mounting Instructions

## To mount this board you will need:

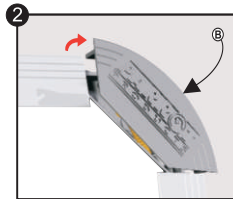
Drilling machine.  
6mm masonry drill bit.  
A hammer.

### Note:

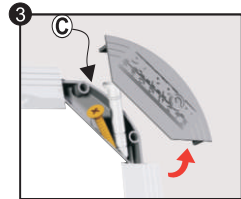
- \* The Tru-fix screws supplied can be hammered straight into position.
- \* Dry wall fixtures are not included.



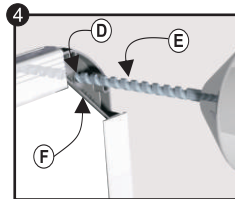
Slide pen tray (A), packed at the back of the board into frame groove, landscape or portrait as required



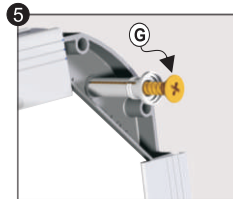
Remove plastic corner caps (B) from the frame by lifting.



Remove the Tru-Fix screws (C) from underneath the corner caps.

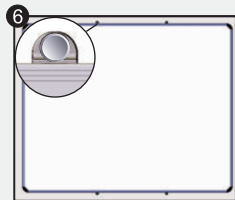


Note the marked area (D) for drilling. Use a 6mm drill bit (E) to drill through the back of the corner mould (F) and into the wall.

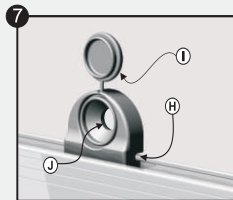


Hammer screw (G) into position. Take care not to damage corner mould or frame - Replace corner cover.

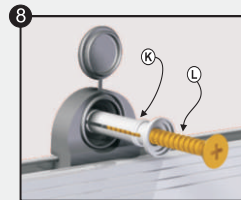
For boards larger than 1500mm, see steps 6, 7 & 8



Mounting brackets packed with pen tray at back of board. Space mounting brackets equally apart (recommended) center to board, top and bottom.



Slide Mounting bracket (H) onto frame. Open cover (I) of mounting bracket. Drill through the hole (J) in the Mounting Bracket.



Place wall plug (K) into hole. Place the screw (L) into the wall plug. Hammer the screw and plug until flush and close mounting bracket cover.