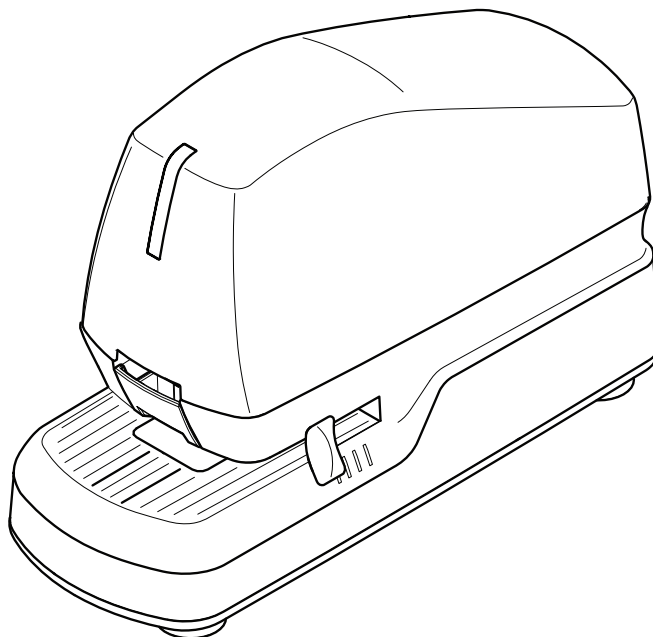
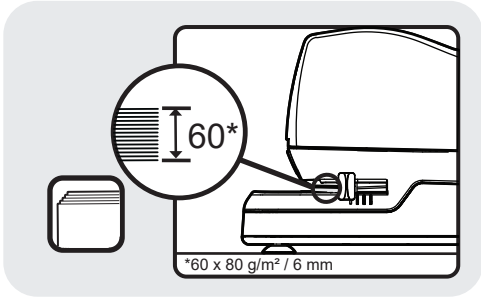
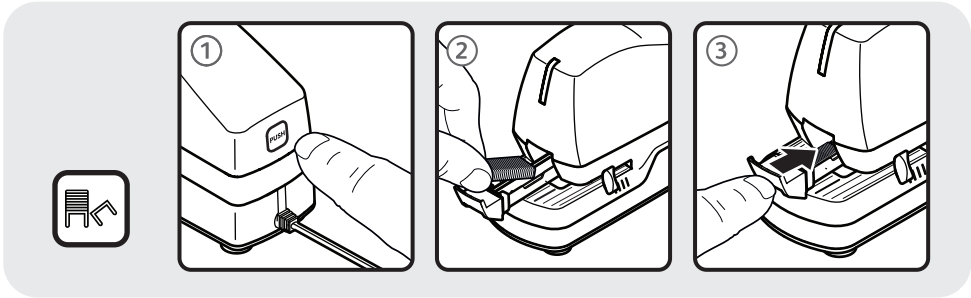
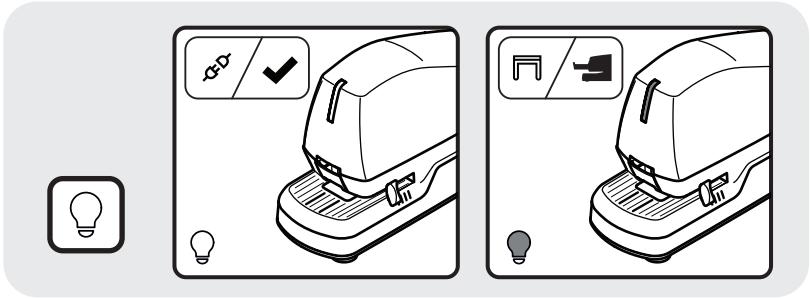
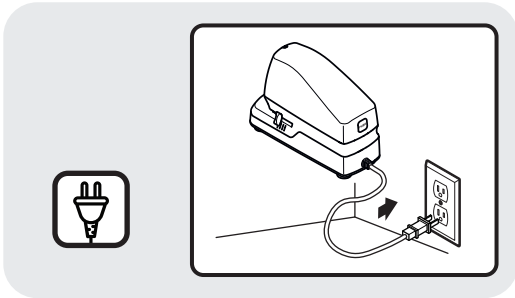


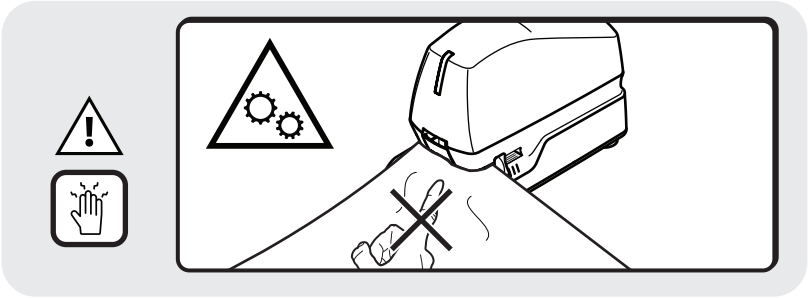
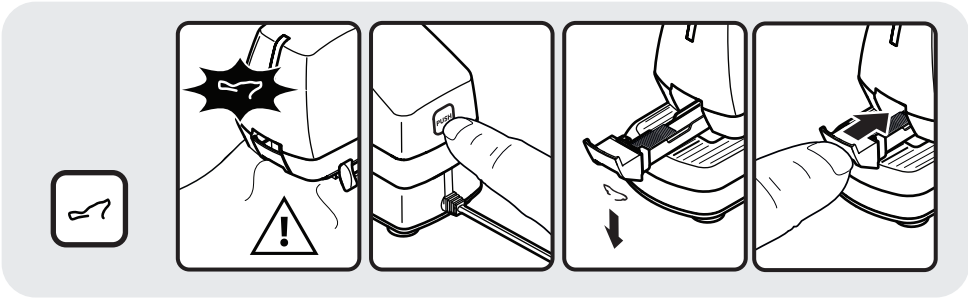
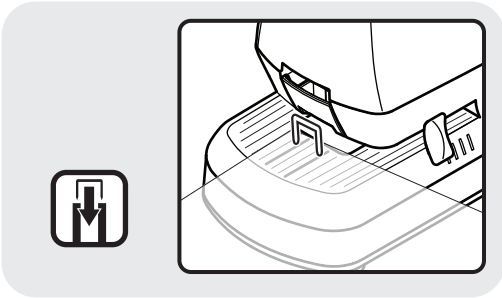
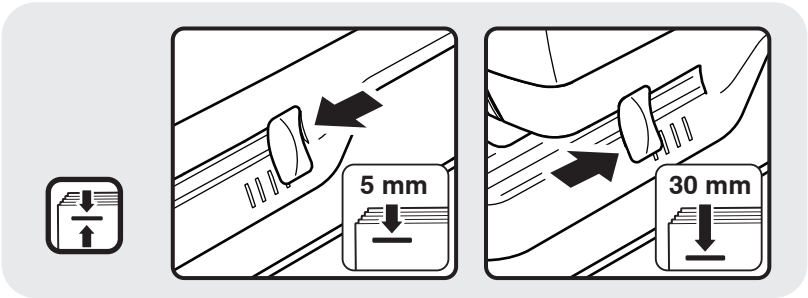
# Optima 60E

Rapid®



GB	Operating instructions	4	LV	Lietošanas instrukcija	24
DE	Betriebsanleitung	5	LT	Naudojimosi instrukcijos	25
FR	Notice technique	9	PL	Instrukcja obsługi	27
NL	Bedieningsvoorschriften	11	CZ	Návod k obsluze	28
ES	Manual de instrucciones	12	SK	Návod na použitie	30
IT	Istruzioni per l'uso	14	HU	Használati útmutató	31
PT	Instruções de utilização	15	RO	Manual tehnic	33
DK	Betjeningsvejledning	17	RU	Руководство по эксплуатации	34
NO	Instruksjoner for bruk	18	UA	Інструкція з експлуатації	36
SE	Bruksanvisning	20	KZ	Пайдалану нұсқаулары	37
FI	Käyttöohjeet	21	TR	Kullanım talimatları	39
EE	Kasutusjuhend	22	GR	Οδηγίες λειτουργίας	40
			AR	تعليمات التشغيل	42






## Intended use

This product is intended to be used indoors for stapling paper or similar materials. The product should only be used in offices or similar environments, such as shops and households. All use other than described in this manual is seen as unintended use.

## For your safety

### **⚠ WARNING**

**Please read all the safety information and the instructions. The manufacturer is not liable for cases of material damage or personal injury caused by incorrect handling or non compliance with the safety instructions. In such cases, the warranty will be voided.**

- Keep all safety information and instructions for future reference and pass them on to subsequent users of the device.
- This equipment is not suitable for use in locations where children are likely to be present.
- This device is not intended for use by persons (including children) with restricted physical, sensory or intellectual capability or lack of experience and/or knowledge, unless they are supervised by a person who is responsible for their safety or provides them with instructions on how to use the device. Children should be supervised in order to ensure that they do not play with the device.
- Check the device and cable for any damage before use. If there is any visible damage, a strong odour, or excessive overheating of components, unplug all the connections immediately and stop using the device.
- The device must be connected to a permanent and earthed AC wall socket.
- Use the device in a suitable, properly installed and easily accessible mains power socket. Locate near the outlet and do not use extension cords. Make sure the device can be disconnected from the mains at all times.
- Prior to connecting to the mains, make sure your local mains voltage matches the rating indicated on the device.
-  Moving parts. Keep fingers away from the opening during operation.
- Do not drop or hit the device.
- Do not attempt to open, modify or repair the device. Do not drop, puncture, break or expose to high pressure.
- Alterations to the device and technical modifications are not permitted.
- Product Temperature range for operation = +5°C / +40°C
- Max. 15 staplings per minute to prevent overheating.